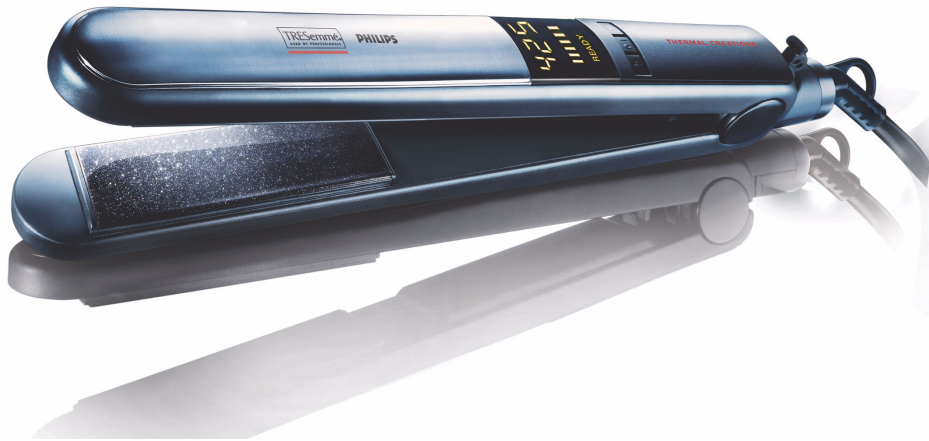


Philips
Straightener



HP4669



EHD+ Technology Straighteners



1" Nano Diamond ceramic plates



Smart contact plates



TRESemmé Thermal Creations

Thermal Creations, 1" Plates Straightener

Professional results, maximum protection

Look salon-fabulous every day! TRESemmé and Philips have joined together to offer you the perfect fusion of salon expertise and technological innovation. Together we are committed to providing professional results in the simplest, easiest way.

Professional results

- EHD+ Technology Straighteners
- 1" Nano Diamond ceramic plates
- Smart contact plates
- Up to 425 °F professional temperature
- TRESemmé Thermal Creations Heat Tamer Spray

Instant heat-up

- Within 30 seconds

Easy to use

- Digital temperature control
- Automatic shut-off after 1 hour
- Ready-to-use indicator
- Hanging loop for convenient storage
- Handle storage lock
- 9'2.74 m Professional swivel cord

PHILIPS
sense and simplicity

Straightener

HP4669

Specifications

Technical specifications

- **Cord length:** 2.74 m

Serviceability

- Replacement

Product highlights

EHD+ Technology Straighteners

Optimal Even Heat Distribution at high temperatures without damaging hot spots, for long-lasting professional results.

1" Nano Diamond ceramic plates

For smooth gliding and shiny hair.

Smart contact plates

Enables maximum contact and smooth cushioned gliding from root to tip.

TRESemmé Thermal Creations

For additional protection and shine.



Issue date 2009-02-16

Version: 4.2.1

12 NC: 0000 000 00000

© 2009 Koninklijke Philips Electronics N.V.
All Rights reserved.

Specifications are subject to change without notice.
Trademarks are the property of Koninklijke Philips
Electronics N.V. or their respective owners.

www.philips.com