

- World-class welding and automation expertise
- Pre-configured or customized systems
- Local support
- Nextweld®-enhanced solutions
- Comprehensive application analysis
- Installation/start-up
- Programming
- Service
- Training
- Purchase/lease financing

boost production output, and increase operating efficiencies.

Whether your company is considering its first automated welding cell, or you're ready to upgrade or enhance existing robotic systems, you can't choose a better partner than Lincoln Electric. Automated welding solutions from Lincoln are helping fabricators all over the globe improve product quality, and increase production output, and increase operating efficiencies.

LINCOLN NORTH AMERICA - DISTRICT SALES OFFICES

U.S.A.

ALABAMA
BIRMINGHAM 35124-1156
(205) 988-8232
MOBILE 36582-5209
(251) 443-8524

ALASKA
Contact VANCOUVER, WA
(360) 693-4712

ARIZONA
PHOENIX 85260-1745
(480) 348-2004

ARKANSAS
LITTLE ROCK 72032-4371
(501) 764-0480

CALIFORNIA
FRESNO 93722-3949
(559) 276-0110
LOS ANGELES 90670-2936
(562) 906-7700
SAN DIEGO 92066-4165
(760) 787-1970
Northern California 95762-5706
(916) 939-8788

COLORADO
DENVER 80112-5115
(303) 792-2418

CONNECTICUT
NORTH HAVEN 06238-1090
(860) 742-8887

FLORIDA
JACKSONVILLE 32216-4634
(904) 642-3177
MIAMI 33178-1175
(305) 888-3203
ORLANDO 32714-1974
(407) 788-8557
TAMPA 33594
(813) 477-5817

GEORGIA
ATLANTA 30122-3811
(888) 935-3860
SAVANNAH 31324-5180
(912) 727-4266

HAWAII
Contact LOS ANGELES, CA
(562) 906-7700

IDAHO
BOISE 83616-6646
(208) 938-2302

ILLINOIS
CHICAGO 60440-3538
(630) 783-3600
PEORIA 60527-5629
(630) 920-1500

INDIANA
FT. WAYNE 46825-5547
(260) 484-4422
SOUTH BEND 46561-9160
(219) 674-5523
INDIANAPOLIS 46250-5536
(317) 845-8445

IOWA
CEDAR RAPIDS 52402-3160
(319) 362-8804
DAVENPORT 52806-1344
(563) 386-6522
DES MOINES 50265-6218
(515) 983-1778

KANSAS
KANSAS CITY 66214-1625
(913) 894-0888
WICHITA 67037-9614
(316) 788-7367

KENTUCKY
LOUISVILLE 47112-7025
(502) 727-7335

LOUISIANA
BATON ROUGE 70808-3150
(225) 922-5151
LAFAYETTE 70507-3126
(337) 886-1090
SHREVEPORT 75692-9313
(318) 518-4099

MARYLAND
BALTIMORE 21128-8936
(571) 283-2565

MASSACHUSETTS
BOSTON 01581-2658
(508) 788-9353

MICHIGAN
DETROIT 48393-4700
(248) 348-2575
FLINT 48439-8728
(810) 695-2627
GRAND RAPIDS 49512-3924
(616) 942-8780

MINNESOTA
MINNEAPOLIS 55447-4743
(763) 551-1990

MISSISSIPPI
JACKSON 39212-9635
(601) 372-7679

MISSOURI
KANSAS CITY (KS) 66214-1625
(913) 894-0888
ST. LOUIS 63045-1210
(314) 291-5877
SPRINGFIELD 65804
(417) 841-2779

MONTANA
Contact VANCOUVER, WA
(360) 693-4712

NEBRASKA
OMAHA 68046-7031
(402) 203-6401

NEW JERSEY
EDISON 08837-3939
(732) 225-2000

NEW MEXICO
ALBUQUERQUE 87120-5360
(505) 890-6347

NEW YORK
ALBANY 12304-4320
(518) 469-8222
BUFFALO 14075-2520
(716) 646-8414

NORTH CAROLINA
CHARLOTTE 28273-3552
(704) 588-3251
RALEIGH 27604-8456
(919) 303-1972

OHIO
AKRON 44236-4880
(330) 342-8009
CINCINNATI 45242-3706
(513) 554-4440
CLEVELAND 44117-2525
(216) 383-2662
COLUMBUS 43221-4073
(614) 488-7913
DAYTON 45458-4754
(937) 885-6964
TOLEDO 43551-1914
(419) 874-6331

OKLAHOMA
OKLAHOMA CITY 73139-2432
(405) 616-1751
TULSA 74146-1622
(918) 622-9353

PENNSYLVANIA
PHILADELPHIA 19008-4310
(610) 543-9462
PITTSBURGH 15001-4800
(724) 857-2750
HARRISBURG 17104-1422
(717) 213-9163

SOUTH CAROLINA
GREENVILLE 29681-4724
(864) 967-4157
COLUMBIA 29209
(803) 783-2851

SOUTH DAKOTA
SIOUX FALLS 57108-2609
(605) 339-6522

TENNESSEE
KNOXVILLE 37922-1736
(423) 812-1204
MEMPHIS 38119-5811
(901) 683-6260
NASHVILLE 37228-1708
(615) 291-9926
TRI-CITIES 37659-5693
(423) 612-1204

TEXAS
DALLAS 76051-7602
(972) 329-9853
HOUSTON 77060-3143
(281) 841-9444
SAN ANTONIO 78258-4009
(815) 432-0281

UTAH
MIDVALE 84047-3759
(801) 233-9353

VIRGINIA
LEESBURG, VA 20176-4113
Washington, D.C. (703) 904-7735
DANVILLE 24541-6785
(424) 441-0227
HAMPTON ROADS 23455-7216
(757) 870-5508

WASHINGTON
VANCOUVER 98661-8023
(360) 693-4712
SPOKANE 99005-9637
(509) 488-2770

WASHINGTON DC
LEESBURG, VA 20176-4113
(703) 904-7735

WEST VIRGINIA
BARBOURSVILLE 25504-9665
(304) 736-5600

WISCONSIN
GREEN BAY 54302-1829
(920) 435-1012
MILWAUKEE (262) 650-9364

CANADA

ALBERTA
CALGARY (403) 253-9600/(877) 600-WELD
EDMONTON (780) 436-7385
WINNIPEG (204) 488-6398

BRITISH COLUMBIA
VANCOUVER (604) 945-7524

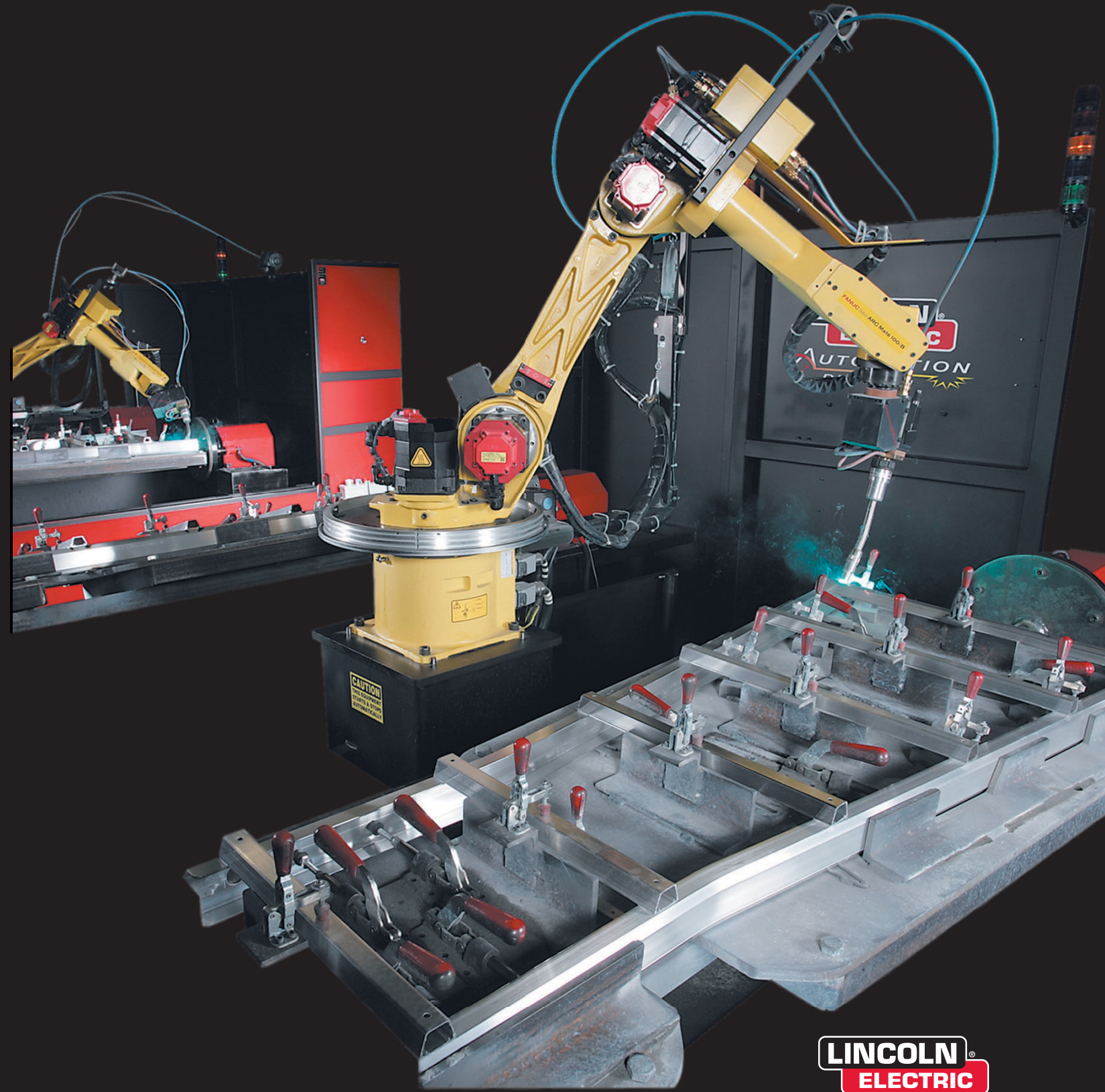
MARITIMES
NEW BRUNSWICK (506) 849-4474

MANITOBA
WINNIPEG (204) 488-6398

ONTARIO
MISSISSAUGA (905) 565-5600
TORONTO (416) 421-2600/(800) 268-0812

QUEBEC
MONTREAL (450) 654-3121

Lincoln Electric Automation System Selection Guide



LINCOLN INTERNATIONAL HEADQUARTERS

LATIN AMERICA
Miami, Florida U.S.A.
Phone: (305) 888-3203

EUROPE
Barcelona, Spain
Phone: 34 91 816 4266

RUSSIA, AFRICA & MIDDLE EAST
Cleveland, Ohio U.S.A.
Phone: (216) 481-8100

ASIA PACIFIC
Shanghai
Phone: 86 21 6602 6620
Australia
Phone: 61 2 9772 7222

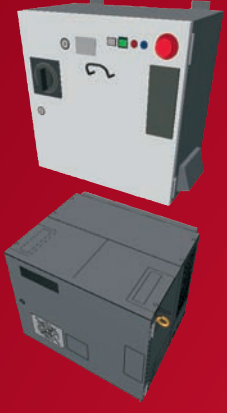
THE HARRIS PRODUCTS GROUP

24501 Quality Place, Mason, Ohio 45040 U.S.A. • Web Site: www.harrisproductsgroup.com
Consumables: ph: 1-800-733-8912, fax: (513) 754-8778 • Equipment: ph: 1-800-241-0804, fax: (770) 535-0544

Use this handy System Selection Guide to help get your decision-making process started. Then, let the Lincoln Electric welding automation experts help you zero-in on the solutions that are best matched to your specific needs. Call 216-383-2667, or email automation@lincolnelectric.com.

Equipment

FANUC® R-30iA A-Cabinet



FANUC® R-30iA B-Cabinet



(M710iC/20L)

Power Wave® 355M

Processes:
MIG, Pulsed MIG,
Flux-Cored



Rated Output:
350 Amps /
34 Volts /
60% Duty Cycle

Output Range:
5-425 Amps

(eCell)

Power Wave® 455M & 455M/STT

Processes:
MIG, Pulsed MIG,
Flux-Cored, STT®
(455M/STT Only)

Rated Output:
450 Amps /
38 Volts /
100% Duty Cycle

Output Range:
5-570 Amps



Power Wave® 655R

Processes:
MIG, Pulsed MIG,
Flux-Cored

Rated Output:
650 Amps /
44 Volts /
100% Duty Cycle

Output Range:
20-880 Amps



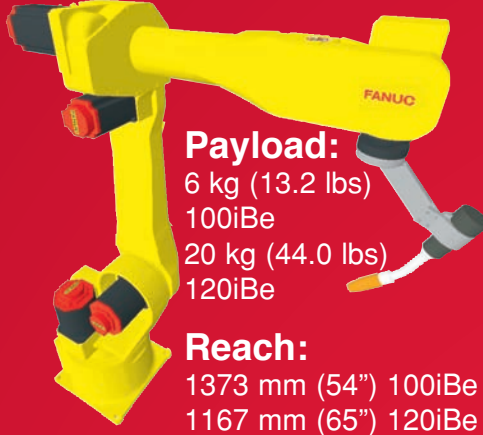
**Robots
(6 axes)**

ArcMate® 100iB-6S



Payload:
6 kg (13.2 lbs)
Reach:
951 mm (37")

ArcMate® 100iBe & 120iBe



Payload:
6 kg (13.2 lbs) 100iBe
20 kg (44.0 lbs) 120iBe
Reach:
1373 mm (54") 100iBe
1167 mm (65") 120iBe

ArcMate® 120iB-10L



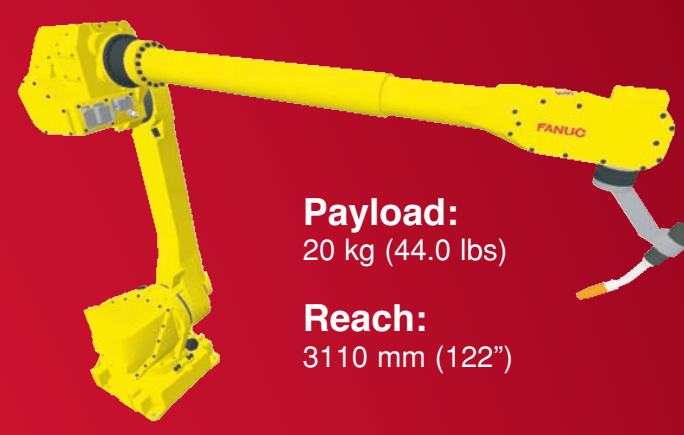
Payload:
10 kg (22.0 lbs)
Reach:
1885 mm (74")

ArcMate® R2000-165F



Payload:
165 kg (360.0 lbs)
Reach:
2660 mm (104")

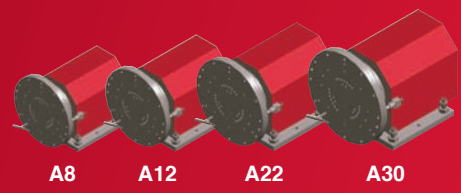
ArcMate® M710iC/20L



Payload:
20 kg (44.0 lbs)
Reach:
3110 mm (122")

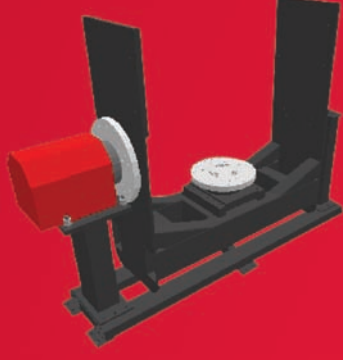
Positioners

Headstock



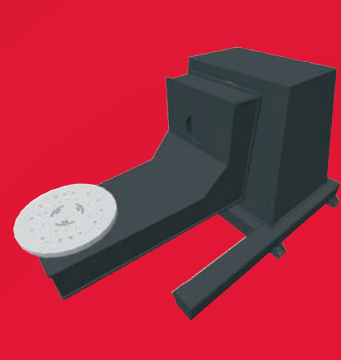
Payload:
907-2722 kg*
(2000-6000 lbs)
*supported load

Drop-Center



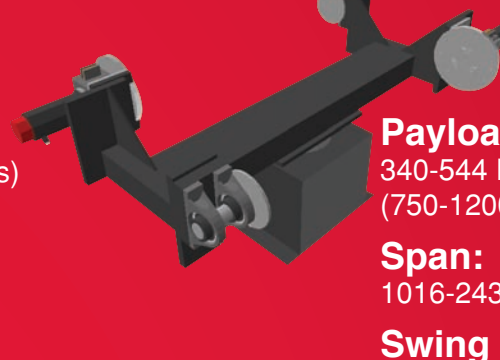
Payload:
2267 kg (5000 lbs)
Span:
2388 mm (94")
Swing Diameter:
2388 mm (94")

SkyHook



Payload:
4535 kg (10000 lbs)
Span:
2286 mm (90")
Swing Diameter:
2286 mm (90")

H-Frame



Payload:
340-544 kg
(750-1200 lbs)
Span:
1016-2438 mm (40-96")
Swing Diameter:
914-1016 mm (36-40")

Ferris Wheel



Payload:
454-1361 kg
(1000-3000 lbs)
Span:
1829-3658 mm (72-144")
Swing Diameter:
1016-1829 mm (40-72")

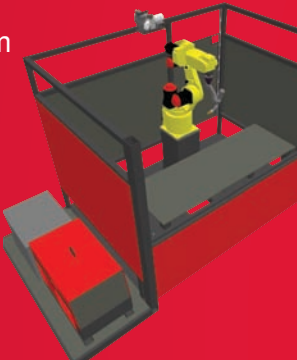
Fixed Table Systems

eCell™



Workzone Dimensions:
(2) - 610 X 610 mm
24" X 24"
Weight Capacity:
113 kg/side
(250 lbs)
Footprint:
2286 x 1524 mm
(90" X 60")

System 5



Workzone Dimensions:
1778 x 610 mm
(70" X 24")
Weight Capacity:
1134 kg/side
(2500 lbs)
Footprint:
3124 x 1753 mm
(123" X 69")

System 10



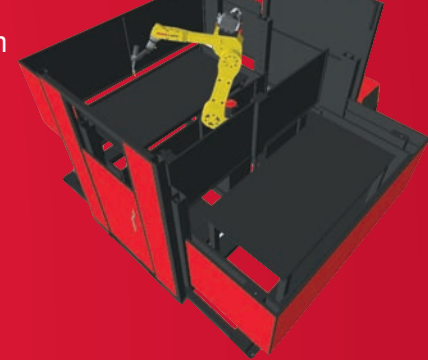
Workzone Dimensions:
(2) - 940 x 889 mm
(37" X 35")
Weight Capacity:
1134 kg/side
(2500 lbs)
Footprint:
3226 x 1753 mm
(127" X 69")

System 30



Workzone Dimensions:
(2) - 914 x 1067 mm
36" X 42"
Weight Capacity:
1134 kg/side
(2500 lbs)
Footprint:
4826 x 2032 mm
(190" X 80")

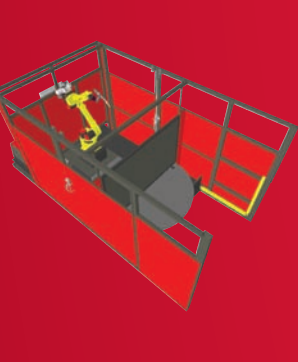
System 35



Workzone Dimensions:
(2) - 1981 x 991 mm
(78" X 39")
Weight Capacity:
1134 kg/side
(2500 lbs)
Footprint:
3912 x 3480 mm
(154" X 137")

Positioning Systems

System 40



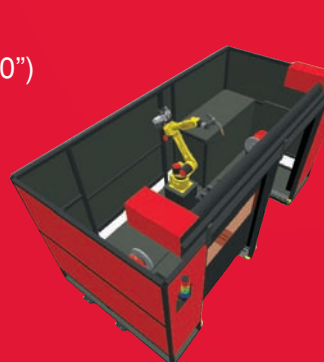
Workzone Dimensions:
1803 mm Diameter
(71")
Weight Capacity:
340 kg/side
(750 lbs)
Footprint:
4928 X 2159 mm
(194" X 85")

System 30HS



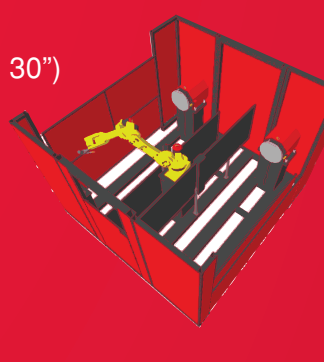
Workzone Dimensions:
762 mm Span,
762 mm Swing (30", 30")
Weight Capacity:
907-2721 kg/side
(2000-6000 lbs)
Footprint:
4572 X 2032 mm
(180" X 80")

System 50HP



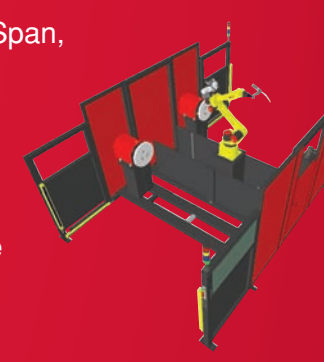
Workzone Dimensions:
1371 mm Span,
1016 mm Swing (30", 30")
Weight Capacity:
907-2721 kg/side
(2000-6000 lbs)
Footprint:
4902 X 2159 mm
(193" X 85")

System 35W



Workzone Dimensions:
2133-2743 mm Span,
914 mm Swing
(84"-108", 36")
Weight Capacity:
907-2721 kg/side
(2000-6000 lbs)
Footprint:
4521 X 3150 mm
(178" X 124")

System 55



Workzone Dimensions:
2133-3048 mm Span,
914-1219 mm Swing
(84"-120", 36"-48")
Weight Capacity:
907-2721 kg/side
(2000-6000 lbs)
Footprint:
6782 X 4902 mm
(267" X 193")

Custom Systems

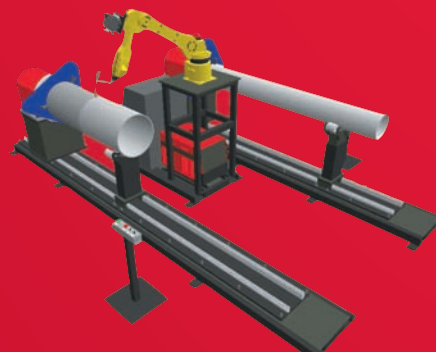
Hard Automation Interface Options



Analog Interface

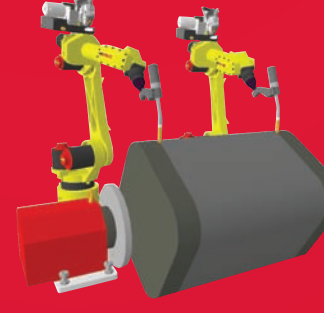
Devicenet Gateway

RoboPipe Process Pipe Welding



16 - 1143 mm, up to 18.3 m
(5/8" - 45", up to 60")

Dual Arm



Single Teach Pendant Programming

- Motion Types
- Independent
- Synchronized
- Mirror Image

Horizontal Track



Floor-Mounted Lengths
up to 18 m (60")

Overhead Rail



Overhead Lengths
up to 28 m (90")

Options

Arc Welding Solutions Package



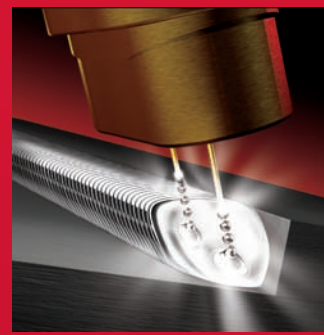
- Optimizes wrist motion
- Available as a retrofit kit

Servo Torch S2f



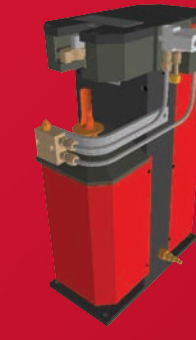
- Aluminum
- Soft Wires

Synchronized Tandem MIG



- High Deposition Rates
- High Travel Speeds

Power Ream Automatic Torch Cleaning



Compatible with
all makes/models
of robots

Environmental Systems



Technical Resources

24/7 Support



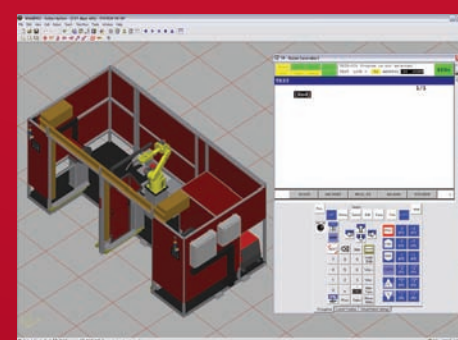
- Highest Customer Satisfaction
- Highest Perceived Value as rated by Quality Solutions, Inc.

World Class Technical Education Center



- Basic and Advanced Courses
- Customized Training
- Service School

Weldpro Offline Programming Software



Procedure Development / On-Site Programming Support



Fixtures, Tooling, End-of-Arm Grippers and Quality Assurance Tools

