

\$1.00

# YARD-MAN

OUTDOOR POWER EQUIPMENT  
for all seasons



Spring



Summer



Fall



Winter

# Owner's Manual

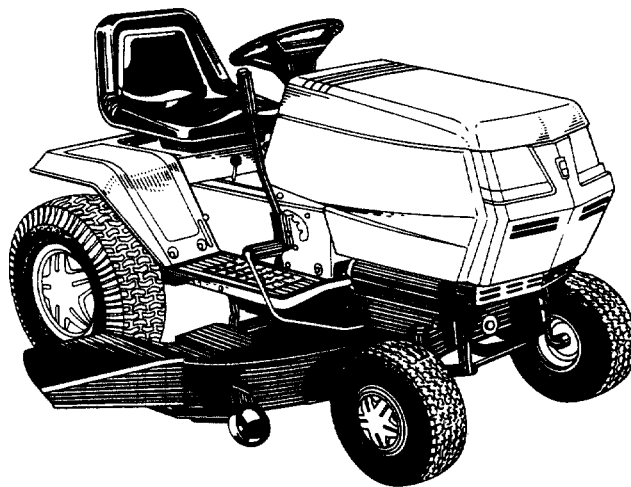
- ASSEMBLY
- OPERATION
- MAINTENANCE
- PARTS LIST

## IMPORTANT:

Read Safety Rules and  
Instructions Carefully

Thank you for purchasing  
an American-built product.

## 18 H.P. HYDROSTATIC LAWN TRACTOR



Model Number  
**130824H**

# INDEX

Slope Gauge .....	3
Contents of Hardware Pack .....	4
Rules for Safe Operation .....	5
Assembly .....	6
Controls .....	10
Operation .....	12
Adjustments .....	13
Lubrication .....	14
Maintenance .....	15
Off-Season Storage .....	18
Trouble Shooting Chart .....	19, 20
Illustrated Parts for Tractor .....	22-33
Electrical Diagram .....	34

Dear Customer,

So often throughout the year we are all in a rush to meet our daily obligations.

However, we at YARD-MAN COMPANY are taking a quick moment out to say . . .

**"Thank you for your business."**

Sincerely,  
YARD-MAN COMPANY



**INSTRUCTIONS GIVEN WITH THIS SYMBOL ARE FOR PERSONAL SAFETY. BE SURE TO FOLLOW THEM.**

## TWO YEAR LIMITED WARRANTY

For two years from the date of original retail purchase, YARD-MAN COMPANY will either repair or replace, at its option, free of charge, F.O.B. factory or authorized service firm, any part or parts found to be defective in material or workmanship. Transportation charges for the movement of any power equipment unit or attachment are the responsibility of the purchaser. Transportation charges for any parts submitted for replacement under this warranty must be paid by the purchaser unless such return is requested by YARD-MAN COMPANY.

This warranty will not apply to any part which has become inoperative due to misuse, excessive use, accident, neglect, improper maintenance, alterations, or if the unit has not been operated and maintained in accordance with the instructions furnished. This warranty does not apply to the engine, Peerless components, motor, battery (except as noted below) or component parts thereof. Please refer to the applicable manufacturer's warranty on these items.

A battery which proves defective within ninety (90) days will be replaced without charge. After 90 days but within one hundred twenty (120) days of purchase, YARD-MAN COMPANY will replace the defective battery for a charge of 1/2 of the current retail price of the battery in effect at the date of return.

Warranty on units used commercially is limited to sixty (60) days.

Warranty service is available through your local authorized service dealer or distributor. If you do not know the dealer or distributor in your area, please write to the Customer Service Department of YARD-MAN.

The return of a complete unit will not be accepted by the factory unless prior written permission has been extended by YARD-MAN.

This express limited warranty is in lieu of all other warranties, express or implied, including any implied warranty of merchantability. The remedy of replacement is the sole and exclusive remedy for YARD-MAN obligations arising from the sale of its products. In no case will YARD-MAN be liable for incidental or consequential loss or damage.

This warranty gives you specific legal rights. You may also have other rights which vary from state to state.

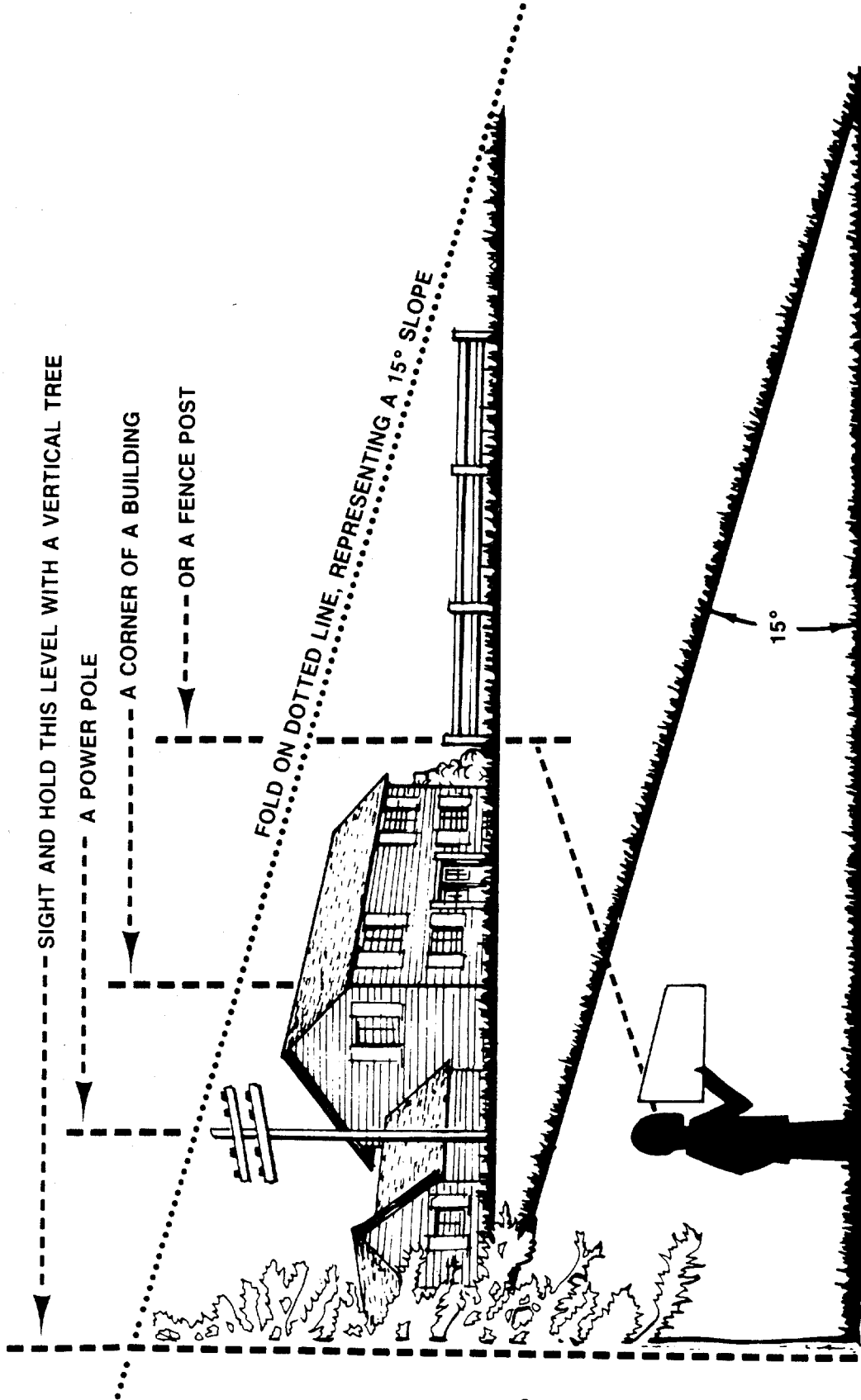
**WARNING:** This unit is equipped with an internal combustion engine and should not be used on or near any unimproved forest-covered, brush-covered or grass-covered land unless the engine's exhaust system is equipped with a spark arrester meeting applicable local or state laws (if any). If a spark arrester is used, it should be maintained in effective working order by the operator.

In the State of California the above is required by law (Section 4442 of the California Public Resources Code). Other states may have similar laws. Federal laws apply on federal lands. A spark arrester muffler is available through your nearest engine authorized service dealer or contact the customer service department of YARD-MAN COMPANY

USE THIS SHEET AS A GUIDE TO DETERMINE SLOPES WHERE YOU MAY NOT OPERATE SAFELY.

# SLOPE GAUGE

(Keep this sheet in a safe place for future reference.)



Do not mow on inclines with a slope in excess of 15 degrees (a rise of approximately 2½ feet every 10 feet). A riding mower could overturn and cause serious injury. If operating a walk-behind mower on such a slope, it is extremely difficult to maintain your footing and you could slip, resulting in serious injury.

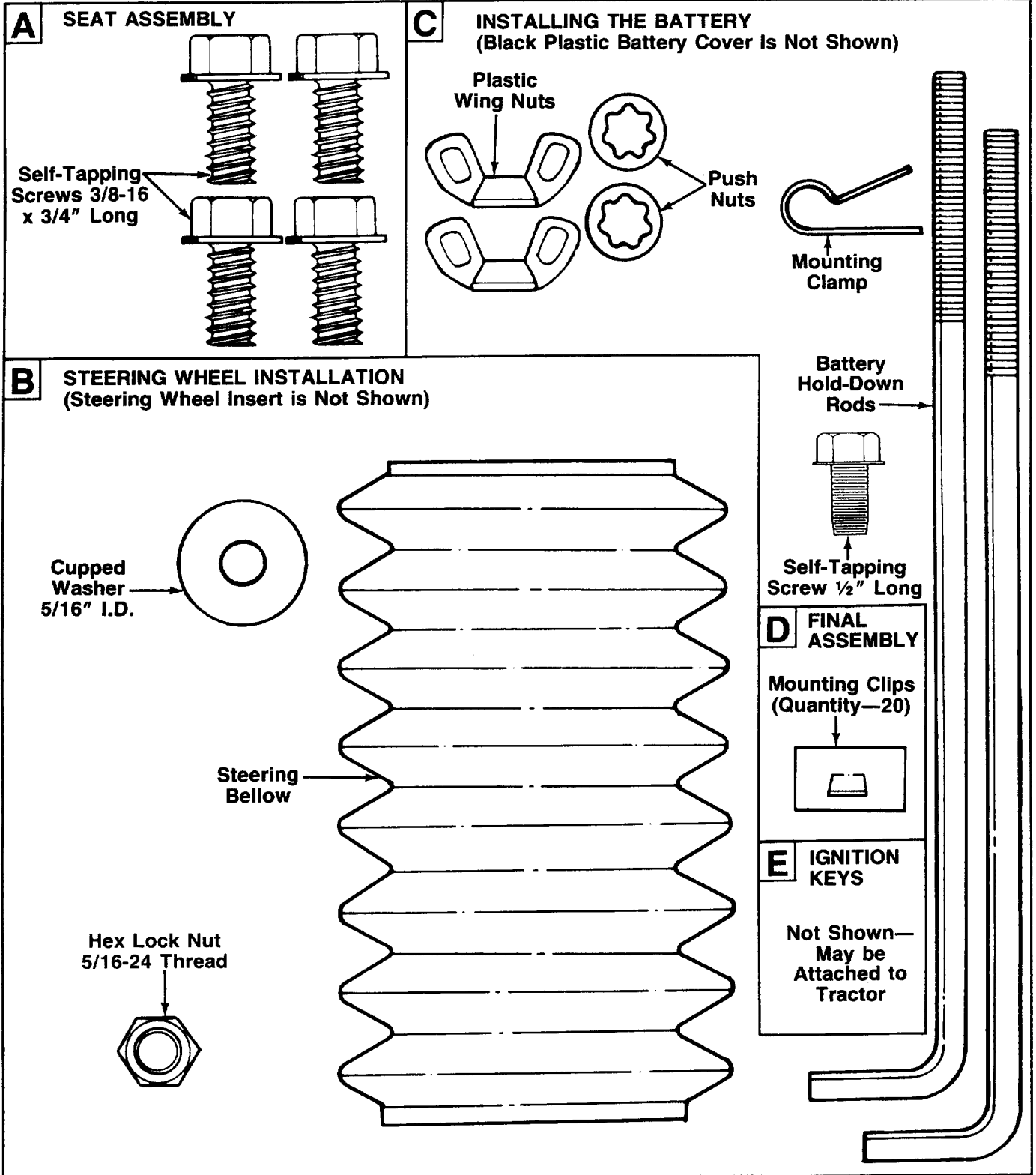
Operate RIDING mowers up and down slopes, never across the face of slopes.

Operate WALK-BEHIND mowers across the face of slopes, never up and down slopes.

# CONTENTS OF HARDWARE PACK

Remove this sheet from your owner's manual and lay the hardware on the illustration for identification purposes. Refer to the separate deck manual for any information concerning the deck. After assembly, keep the Slope Gauge which is on the reverse side of this sheet for future use.

(Hardware pack may contain extra items which are not used on your unit.)



# IMPORTANT

## RULES FOR SAFE OPERATION



THIS SYMBOL POINTS OUT IMPORTANT SAFETY INSTRUCTIONS WHICH, IF NOT FOLLOWED, COULD ENDANGER THE PERSONAL SAFETY AND/OR PROPERTY OF YOURSELF AND OTHERS. READ AND FOLLOW ALL INSTRUCTIONS IN THIS MANUAL BEFORE ATTEMPTING TO OPERATE YOUR UNIT. FAILURE TO COMPLY WITH THESE INSTRUCTIONS MAY RESULT IN PERSONAL INJURY. WHEN YOU SEE THIS SYMBOL—



**HEED ITS WARNING.**



### DANGER

**Your unit was built to be operated according to the rules for safe operation in this manual. As with any type of power equipment, carelessness or error on the part of the operator can result in serious injury. If you violate any of these rules, you may cause serious injury to yourself or others.**

1. READ THIS OWNER'S MANUAL carefully in its entirety before attempting to assemble or operate this unit. Keep this manual in a safe place for future and regular reference and for ordering replacement parts.
2. This unit is a precision piece of power equipment, not a plaything. Therefore exercise extreme caution at all times.
3. Know the controls and how to stop the machine quickly.
4. Do not allow children to operate vehicle. Do not allow adults to operate it without proper instruction. Only persons well acquainted with these rules of safe operation should be allowed to use your mower.
5. Wear sturdy, rough-soled work shoes and close-fitting slacks and shirts to avoid entanglement in the moving parts. Never operate a unit in bare feet, sandals, or sneakers.
6. To prevent injury, do not carry passengers or give rides. Keep children, pets and bystanders out of the area while mowing. Only the operator should ride on the unit and only ride in the seat.
7. Check overhead clearance carefully before driving under power lines, guy wires, bridges or low hanging tree branches, before entering or leaving buildings, or in any other situation where the operator may be struck or pulled from the unit, which could result in serious injury.
8. To maintain control of the unit and reduce the possibility of upset or collision, operate the tractor smoothly. Avoid erratic operation and excessive speed.
9. Keep the area of operation clear of all persons, particularly small children and pets. Stop engine when they are in the vicinity of your mower. Although the area of operation should be completely cleared of foreign objects, a small object may have been overlooked and could be accidentally thrown by the mower in any direction and cause injury to you or a bystander.
10. Always wear safety glasses or eye shields during operation or while performing an adjustment or repair, to protect eyes from foreign objects that may be thrown from the machine in any direction.
11. Stop the blade(s) when crossing gravel drives, walks or roads.
12. Disengage all attachment clutches and shift into neutral before attempting to start engine.
13. Before leaving the operator's position, disengage blade(s), place shift lever in neutral, engage parking brake, shut engine off and remove key.
14. Do not put hands or feet near or under rotating parts. Keep clear of the discharge opening at all times as the rotating blade(s) can cause injury.
15. Disengage power to attachment(s) and stop engine before making any repairs or adjustments. Disconnect the spark plug wire and keep the wire away from the plug to prevent accidental starting.
16. Before attempting to unclog the mower or discharge chute, stop the engine. The mower blade(s) may continue to rotate for a few seconds after the engine is shut off. Therefore, be sure the blade(s) have stopped completely. Disconnect the spark plug wire and keep the wire away from the plug to prevent accidental starting.
17. Disengage power to attachment(s) when transporting or not in use.
18. For your safety, use the slope gauge included as part of this manual to measure slopes before operating this unit on a sloped or hilly area. If the slope is greater than 15° as shown on the slope gauge, do not operate this unit on that area or serious injury could result.
19. Do not stop or start suddenly when going uphill or downhill. Mow up and down face of steep slopes; never across the face. Use extreme caution if it is necessary to drive the tractor up an incline or back the tractor down an incline because the front of the tractor could lift and rapidly flip over backward which could cause serious injury.
20. Reduce speed on slopes and in sharp turns to prevent tipping or loss of control. Always keep the tractor in low gear when going down steep hills to take advantage of engine braking action. Choose a low enough gear so that you will not have to stop or shift while on the slope.
21. Stay alert for holes in terrain and other hidden hazards which may cause the unit to tip over.
22. Use care when pulling loads or using heavy equipment.
  - A. Use only approved drawbar hitch points.
  - B. Limit loads to those you can safely control.
  - C. Do not turn sharply. Use care when backing.
  - D. Use counterweight(s) or wheel weights when suggested in owner's manual.
23. Watch out for traffic when crossing or near roadways.
24. When using any attachments, never direct discharge of material toward bystanders nor allow anyone near vehicle while in operation.
25. Handle gasoline with care. It is highly flammable.
  - A. Use approved gasoline container.
  - B. Never remove cap or add gasoline to a running or hot engine or fill fuel tank indoors. Wipe up spilled gasoline. Always use original type vented cap.
  - C. Open doors if engine is run in garage. Exhaust fumes are dangerous. Do not run engine indoors.
26. Never store the machine with fuel in the fuel tank inside a building where ignition sources are present, such as hot water and space heaters, clothes dryers, and the like. Allow the engine to cool before storing in any enclosure.
27. To reduce fire hazard, keep engine and cutting deck free of grass, leaves or excessive grease.
28. Keep the vehicle and attachments in good operating condition, and keep safety devices in place. Use guards as instructed in operator's manual.
29. Keep all nuts, bolts, and screws tight to be sure the equipment is in safe working condition.
30. The vehicle and attachments should be stopped and inspected for damage after striking a foreign object. The damage should be repaired before restarting and operating the equipment.
31. Do not change the engine governor settings or overspeed the engine.

## Rules for Safe Operation (continued)

32. When using the vehicle with mower, proceed as follows:
  - (1) Mow only in daylight or in good artificial light.
  - (2) Never make a cutting height adjustment while engine is running if operator must dismount to do so.
  - (3) Shut the engine off and wait until the blade comes to a complete stop before removing the grass catcher.
  - (4) Check blade mounting bolts for proper tightness at frequent intervals.
33. Check grass catcher bags frequently for wear or deterioration. For safety protection, replace only with new bag meeting original equipment specifications.
34. Look behind to make sure the area is clear before placing the transmission in reverse and continue looking behind while backing up. Disengage blades before shifting into reverse and backing up.
35. This unit should not be driven up a ramp onto a trailer or truck under power, because the unit could tip over, causing serious personal injury. The unit must be pushed manually to load properly.
36. Check brake operation frequently. Adjust and service according to brake adjustment instructions in this manual.

---

## ASSEMBLY

---

**➡ IMPORTANT:** This unit is shipped **WITHOUT GASOLINE or OIL**; however, a small amount of oil may be present from the factory. Do not overfill. After assembly, service engine with gasoline and oil as instructed in the separate engine manual packed with your unit.

**➡ NOTE:** Reference to right or left hand side of the unit is observed from the driver's seat, facing forward. Refer to the separate deck manual for all information concerning the deck.

### UNPACKING

1. Remove the carton from the tractor as follows. Cut and remove the bands around the carton. Open the top flaps and remove all carton inserts. Lift the carton off the tractor. Remove the deck from beneath the tractor. Using the relief valve, roll the tractor off the skid. Make certain all parts and literature have been removed from the carton before the carton is discarded.
2. Remove page four from this manual and lay the contents of the hardware pack on the illustration for identification.

### BATTERY INFORMATION



#### WARNING

- A. Battery acid must be handled with great care as contact with it can burn and blister the skin. It is also advisable to wear protective clothing (goggles, rubber gloves and apron) when working with it.\*
  - B. Should battery acid accidentally splatter into the eyes or onto the face, rinse the affected area immediately with clean, cold water. If there is any further discomfort, seek prompt medical attention.
  - C. If acid spills on clothing, first dilute it with clean water, then neutralize with a solution of ammonia/water or baking soda/water.
  - D. Since battery acid is corrosive, do not pour it into any sink or drain. Before discarding empty electrolyte containers, rinse them with a neutralizing solution.
  - E. NEVER connect or disconnect charger clips to battery while charger is turned on as it can cause sparks.
  - F. Keep all lighted materials (cigarettes, matches, lighters) away from the battery as the hydrogen gas generated during charging can be combustible.
  - G. As a further precaution, only charge the battery in a well-ventilated area.
- \*Always shield eyes, protect skin and clothing when working near batteries.**

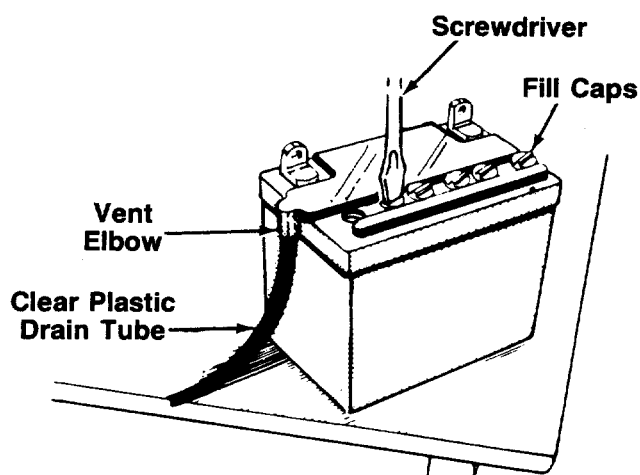


FIGURE 1.

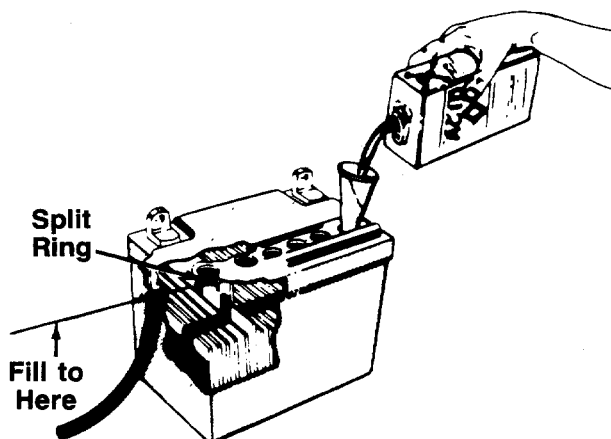


FIGURE 2.

## ACTIVATING THE BATTERY

Do not activate battery (fill with battery acid) until battery is actually placed in service. Be certain to read previous warnings before activating the battery.

1. Open the battery pack. Be careful not to puncture the box. It contains the battery with a long plastic tube attached, battery fluid (acid) in a cardboard container and one cone.
2. Place the battery on a table or workbench. Make certain the long plastic drain tube is in place on the vent elbow.
3. Remove the six fill caps from the top of the battery with a screwdriver. Be careful not to damage the fill caps. See figure 1.
4. Cut off the tip of the cone for use as a funnel.
5. Place the battery fluid container upright on the table or workbench. Carefully remove the flap on the box, and pull out the plastic tube. Cut off the tip of the plastic tube. Do not squeeze the container when cutting the tip.
6. Fill each battery cell slowly and carefully to the split ring at the bottom of the well. See figure 2. Use caution as the acid level will rise rapidly after the bottom of the cell is filled. **DO NOT OVERFILL.**
7. Allow battery to stand for 30 minutes with the fill caps removed, while the plates absorb acid.
8. If acid level has fallen after the 30 minute standing period, refill each cell with battery acid to the split ring. Replace the fill caps.
9. Before discarding the empty container, neutralize any residue with baking soda and rinse container with water. Puncture container several times before discarding.
10. Charge the battery after the 30 minute standing period. **SLOW CHARGE THE BATTERY (DO NOT FAST CHARGE)** at a maximum bench rate of 5 amperes until the specific gravity reading is 1.265 (approximately 30 minutes).

**NOTE:** This engine is equipped with an alternator. The current for the battery charger alternator is unregulated. During normal operation, it is only necessary to charge the battery:

1. When it is activated for the first time.
2. Before winter storage.
3. Before using the lawn tractor after winter storage.

**NOTE:** Charging rate after battery has been put into operation—the battery is to be charged for a period of 14-16 hours. **NO LONGER THAN 30 HOURS.**

After battery has been charged, add only distilled water. Do not add acid.



**DANGER**

Battery contains sulfuric acid. Refer to warning on page 6. Antidote: EXTERNAL—Flush with water. INTERNAL—Drink large quantities of water or milk. Follow with milk of magnesia, beaten egg or vegetable oil. Seek prompt medical attention. EYES: Flush with cool water for at least 15 minutes, then seek immediate medical attention.

Since batteries produce explosive gases, keep all lighted materials (cigarettes, lighters, matches, etc.) away. Be sure to charge battery only in well-ventilated areas.

KEEP BATTERIES  
OUT OF THE REACH OF CHILDREN!

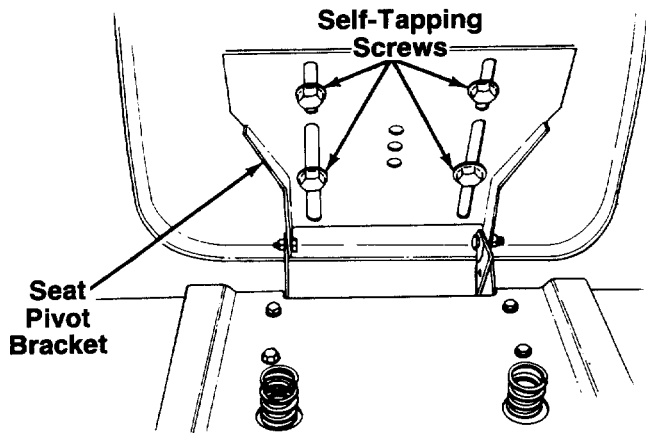


FIGURE 3.

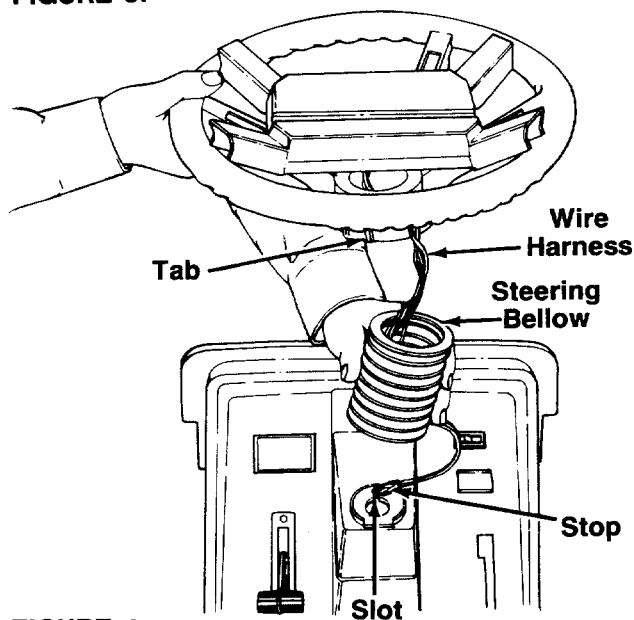


FIGURE 4.

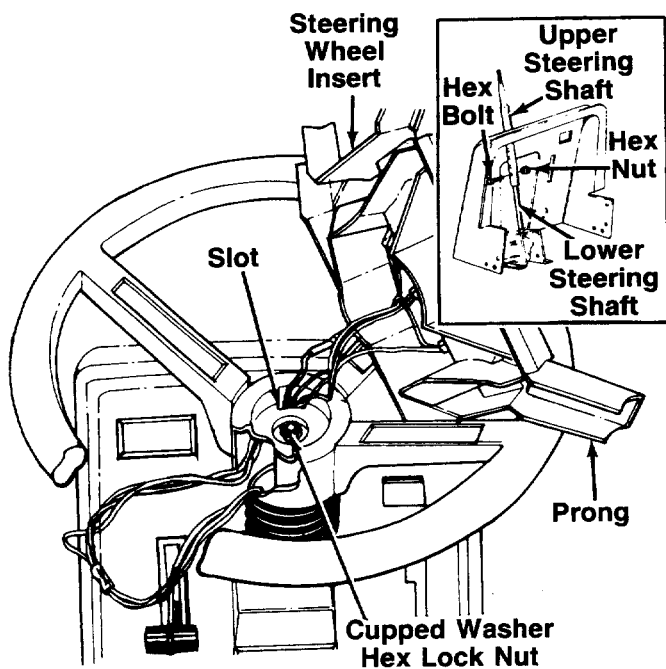


FIGURE 5.

### SEAT ASSEMBLY (Hardware A)

Place the seat in position against the seat pivot bracket, lining up the slotted holes in the pivot bracket with the holes in the seat. Select desired position for the seat, and secure with hex self-tapping screws. See figure 3.

### STEERING WHEEL INSTALLATION (Hardware B)

Your unit is equipped with indicator lights, located in the steering wheel. The steering wheel must be assembled as follows for proper operation of the indicator lights.

1. Open the hood of the tractor.
2. Place the larger end of the steering bellow over the wire harness extending through the steering wheel (bellow must fit over the four tabs on the steering wheel). See figure 4.
3. Insert the ends of the wire harness down through the hole in the dash. Then slide the wires through the slot into the smaller hole in the dash to the stop (tape) on the harness as shown in figure 4. Only about 6" of wire will extend beneath the dash.
4. Plug the three connectors on the wire harness into the corresponding connectors on the tractor.
5. Slide the upper steering column through the hole in the dash, over the lower steering column. Insert hex bolt through upper and lower column to secure temporarily in any one of the four hole locations.
6. Position the front wheels of the tractor so they are pointing straight forward.
7. Slide the steering bellow over the steering column. Hold the wires out of the way as shown. See figure 5.
8. Place the steering wheel over the steering column, positioning steering wheel as shown (slot for the wires is toward the front of the tractor).
9. Place the washer with the cupped side down over the steering column. Secure with 5/16" hex lock nut.
10. Attach the steering wheel insert to the steering wheel as follows.
  - a. Position the steering wheel insert so the lights are toward the bottom.
  - b. Place the two prongs on one side of the insert over two of the spokes on the steering wheel. Press into place.
  - c. Take the slack out of the wires by pulling through the steering wheel.
  - d. Press the prongs on the other side of the insert over the other two spokes on the steering wheel.
11. Remove the hex bolt which is holding the upper and lower steering columns. Turn steering wheel three full revolutions clockwise.



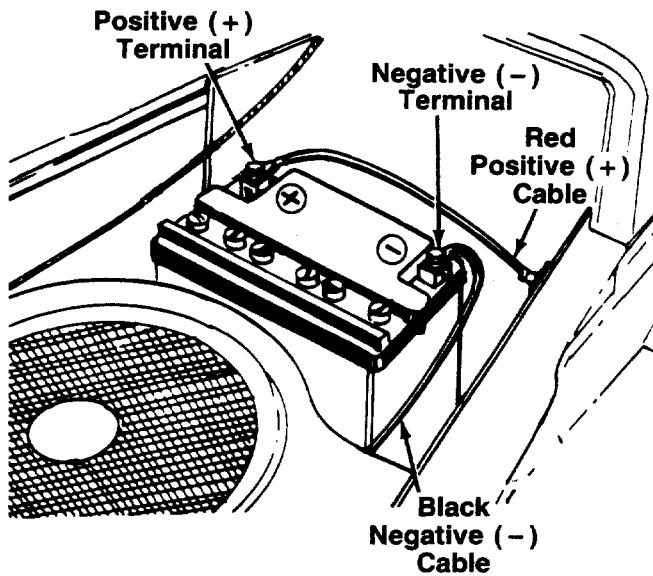


FIGURE 6.

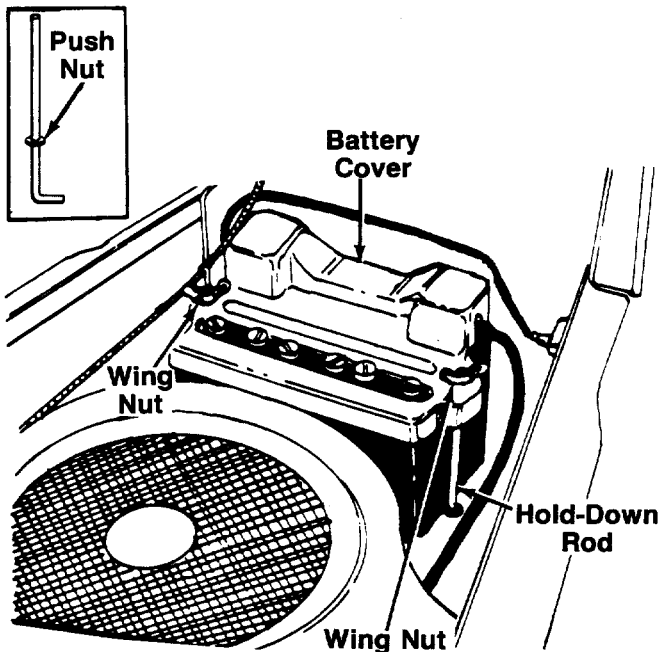


FIGURE 7.

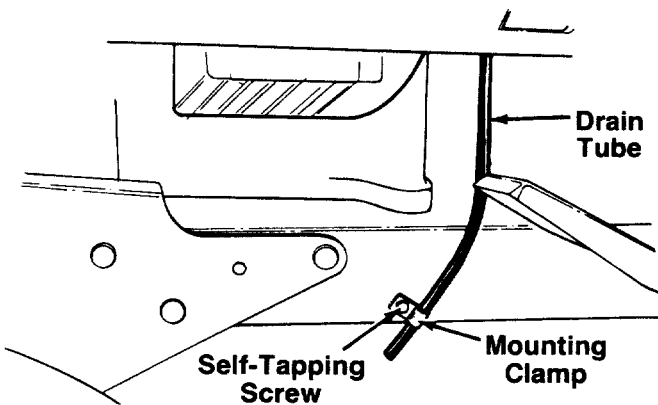


FIGURE 8.

12. The four holes in the upper steering column provide four height positions for the steering wheel. See figure 5, inset. Select desired position, and secure with hex bolt and hex lock nut. Tighten securely.
13. If any excess wire is beneath the steering wheel, insert it inside the steering bellow. Pull bellow up against the bottom of the steering wheel.

### INSTALLING THE BATTERY (Hardware C)

**NOTE:** The positive battery terminal is marked Pos. (+). The negative battery terminal is marked Neg. (-).

1. Place the battery on the battery plate with the terminals towards the rear of the tractor.
2. Attach the positive cable (heavy red wire) to the positive battery terminal (+) with hex bolt and hex nut provided with battery. See figure 6.
3. Attach the negative cable (heavy black wire) to the negative battery terminal (-) with the other hex bolt and hex nut.

4. Attach one push nut to each battery hold-down rod. See figure 7, inset.
5. Hook one hold-down rod into the hole in battery plate beside the battery as shown in figure 7. Slide the push nut down the rod, against the battery plate. Place the black plastic battery cover in position over the hold-down rod. Secure with wing nut. Attach other hold-down rod to the other side of battery cover in the same manner.

6. Route the battery drain tube over to the left side of the tractor. Slip the end of the drain tube into the mounting clamp provided in hardware pack. Secure the mounting clamp to the tractor frame using the self-tapping screw as shown in figure 8.

**NOTE:** The vented battery allows any gases or liquid from the battery to be drained onto the ground.

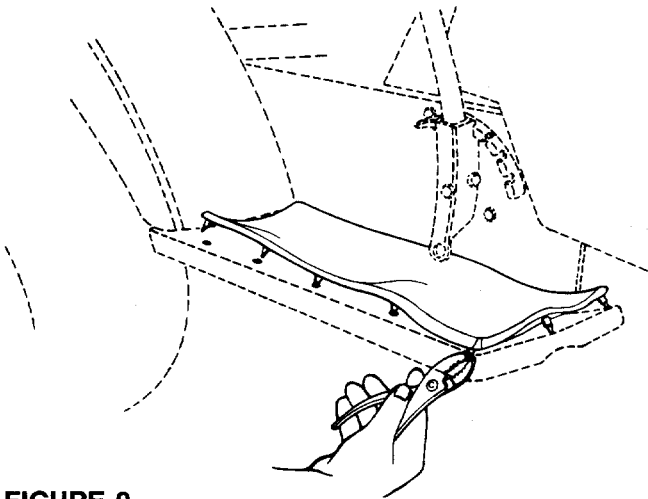


FIGURE 9.

### FINAL ASSEMBLY (Hardware D)

1. Position one foot pad on top of the running board on the tractor, lining up the studs on the bottom of pad with the holes in the running board. Pull the studs through the holes in the running board using a pair of pliers. Repeat on other side of tractor. See figure 9.



2. Attach the four hub caps as follows.

- a. Slide five mounting clips on each hub cap as shown in figure 10, with the tabs on the mounting clips facing outward.
- b. Line up hub caps with wheel rims. Push hub caps on by hand.

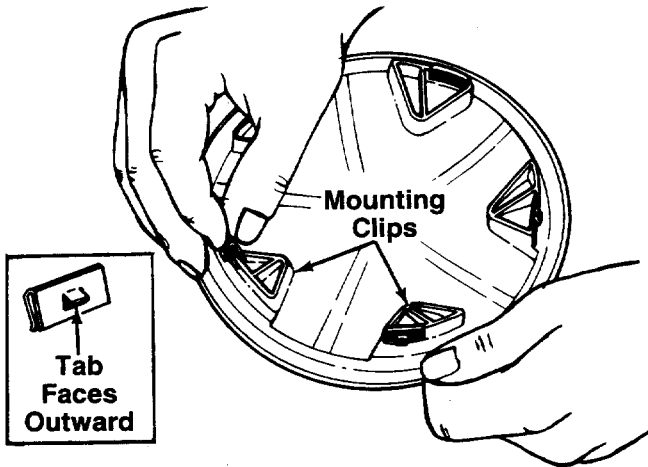


FIGURE 10.

### TIRE PRESSURE

The tires on your unit may be over-inflated for shipping purposes. Reduce the tire pressure before operating the unit. Recommended operating tire pressure is approximately 12 p.s.i. (check sidewall of tire for tire manufacturer's recommended pressure).



**WARNING:** Maximum tire pressure under any circumstances is 30 p.s.i. Equal tire pressure should be maintained on all tires.

## CONTROLS

### IGNITION SWITCH

The ignition switch is located on the dashboard. Turn the key to the START position to start the engine. When the engine is running, leave the key in the ON position. To stop the engine, turn the key to the OFF position. See figure 11.



**WARNING:** Remove the key from the tractor when the tractor is not in use to prevent accidental starting.

### THROTTLE CONTROL

The throttle control is located on the left side of the dashboard and is used to regulate the engine speed. See figure 11. The engine should be operated from  $\frac{3}{4}$  to full throttle (FAST) when operating any equipment that uses the tractor engine as a source of power such as the mowing deck, snow thrower or rotary tiller.

### CHOKE CONTROL

The choke control is located on the right side of the dashboard and is operated manually. Details for the

choke operation are covered in the separate engine manual packed with your unit. See figure 11.

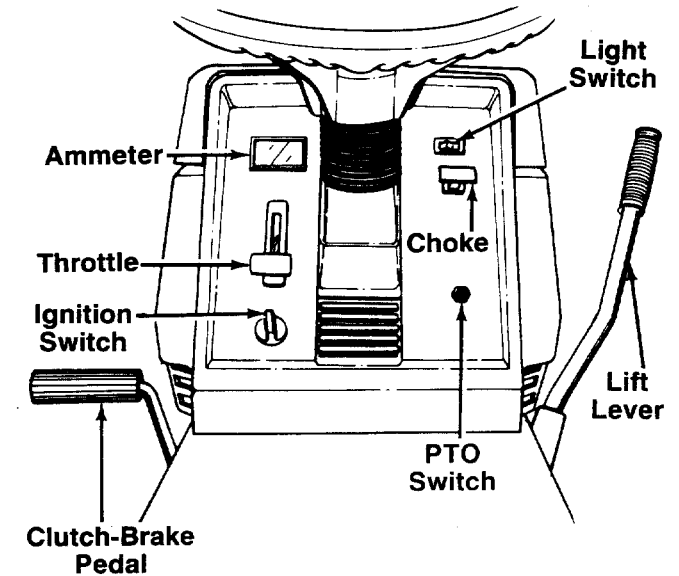


FIGURE 11.

## LIGHT SWITCH

The head lamps are operated by pushing the light switch located on the dashboard. The head lamps will only operate when the engine is running. See figure 11.

## AMMETER

The ammeter registers the rate of battery charge or discharge. The ammeter will register on the discharging side with starting the engine. It should register on the opposite side (charging) when the engine is running in the fast position until the battery is completely charged. With a fully charged battery or with the engine idling, the ammeter will not show a charge. See figure 11.

## HYDROSTATIC CONTROL LEVER

The hydrostatic control lever is located on top of the fender on the left side of the tractor. This single control lever, connected to the hydrostatic transmission, controls both the speed and direction of the tractor. Infinite speed control is achieved by moving the control lever forward or backward. The farther forward or backward you move the control lever, the faster you will travel. Pulling the control lever into neutral (N) area will stop the tractor. To increase rear wheel torque (pulling power), move the control lever towards neutral (N) position. The lawn tractor responds similar to shifting to a lower gear with a gear type transmission. See figure 12.

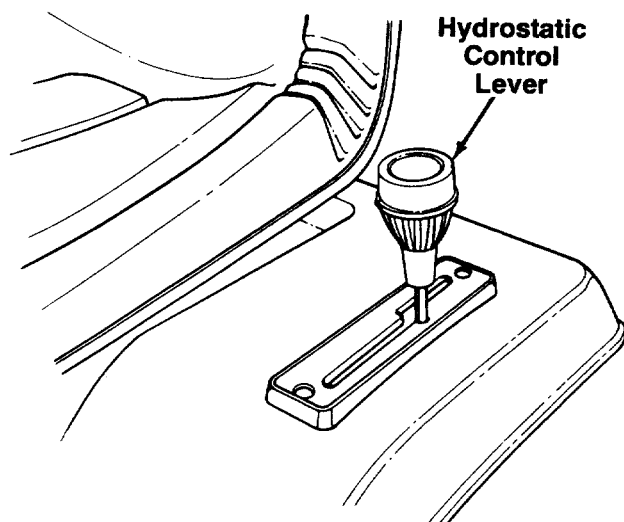


FIGURE 12.

## CLUTCH-BRAKE PEDAL

The clutch-brake pedal is located on the left side of the tractor. See figure 11. Depressing the pedal disengages the engine from the hydrostatic transmission and applies the brake.

**NOTE:** The clutch-brake pedal must be depressed to start the engine.

## PARKING BRAKE

To set the parking brake, depress the clutch-brake pedal and pull up the parking brake knob. It will stay in the raised position. To release the parking brake, depress and release the clutch-brake pedal. See figure 13.

**NOTE:** The parking brake must be set if the operator leaves the seat with the engine running.

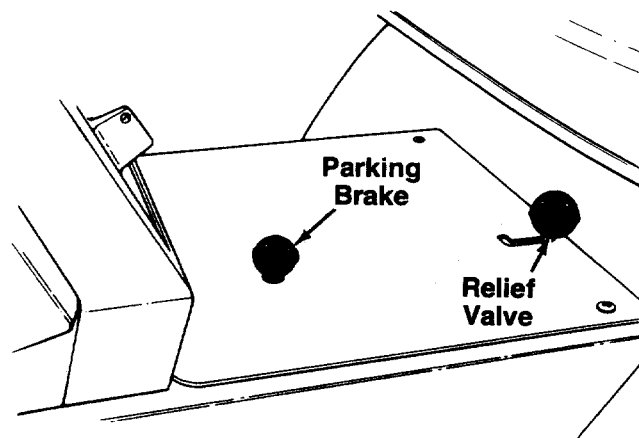


FIGURE 13.

## RELIEF VALVE

A hydrostatic relief valve is provided so the unit can be moved without the engine running. The lever which operates the relief valve is located on the console. See figure 13.

To operate the relief valve, place the hydrostatic control lever in neutral, release the parking brake, push the lever forward and to the right to lock. Be certain to release the lever by pushing it to the left before operating the engine.

## LIFT LEVER

The five position lift lever is used to change the operating position of the attachments. To operate, pull the lever towards you. To release, move the lever to the right and then forward. See figure 11.

## POWER TAKE-OFF (PTO) SWITCH

The PTO switch is located on the right side of the dashboard. See figure 14. The PTO switch **must** be in the OFF position (down) when starting the engine, when shifting into reverse and if the operator leaves the seat.

To engage the PTO switch, pull knob out and lift up to ON position, then release. The knob will return to RUN position. See figure 14.

**NOTE:** The PTO switch **must** be in OFF position when starting the engine, when shifting into reverse and if the operator leaves the seat.

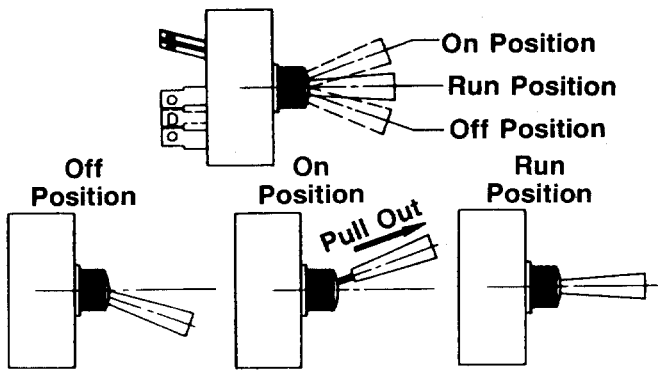


FIGURE 14.

## INDICATOR LIGHTS

The unit is equipped with three indicator lights, located in the steering wheel. If a light illuminates when attempting to start the unit, proceed as follows:

CLUTCH—Depress the clutch pedal.

PTO—Disengage the PTO.

REVERSE—Designates unit is in reverse. **Use Caution.**

## OPERATION

### CAUTION

- Do not operate the tractor if the interlock system is malfunctioning because it is a safety device, designed for protection.
- Do not operate the tractor if the parking brake is not set.
- Do not operate the tractor if the hydrostatic control lever is not in the NEUTRAL (N) position.
- Do not operate the tractor if the throttle control is not in the FAST position.
- Do not operate the tractor if the choke control is not pulled out.
- Do not operate the tractor if the ignition key is not in the ON position.
- Do not operate the tractor if the engine is not warmed up.
- Do not operate the tractor if the engine is not running.
- Do not operate the tractor if the engine is not at normal operating temperature.
- Do not operate the tractor if the engine is not at normal operating pressure.
- Do not operate the tractor if the engine is not at normal operating speed.
- Do not operate the tractor if the engine is not at normal operating RPM.
- Do not operate the tractor if the engine is not at normal operating torque.
- Do not operate the tractor if the engine is not at normal operating power.
- Do not operate the tractor if the engine is not at normal operating efficiency.
- Do not operate the tractor if the engine is not at normal operating life.

### GAS AND OIL FILL-UP

Service the engine with gasoline and oil as instructed in the separate engine manual packed with your tractor. Read instructions carefully.

The gasoline tank is located under the seat. The filler neck is behind the seat. Do not overfill.

**NOTE:** Your tractor is shipped without oil; however, a small amount of oil may be present from the factory. Do not overfill.



**WARNING:** Never fill fuel tank indoors, with engine running or while engine is hot.

### OPERATING THE TRACTOR

**IMPORTANT:** This unit is equipped with a **safety interlock system** for your protection. The purpose of the safety interlock system is to prevent the engine from cranking or starting unless the clutch-brake pedal is depressed and the PTO switch is in the OFF position. In addition, the PTO switch must be in the OFF position when the unit is put into reverse or the engine will shut off. If the operator leaves the seat with the PTO ON and/or without setting the parking brake, the engine will shut off.



**WARNING:** Do not operate the tractor if the interlock system is malfunctioning because it is a safety device, designed for protection.

1. Place the PTO switch in the OFF position.
2. Depress the clutch-brake pedal and set the parking brake.
3. Place the hydrostatic control lever in the NEUTRAL (N) position.
4. Set the throttle control in the FAST position.
5. Pull out the choke control. (A warm engine requires less choking.)
6. Turn the ignition key to the right to the START position. After the engine starts, release the key. It will return to the ON position.
7. Slowly push in the choke as the engine warms up.
8. Depress the clutch-brake pedal so the parking brake is released and then release the clutch-brake pedal.
9. Move the hydrostatic control lever forward. The farther forward you move the hydrostatic control lever, the faster you will travel.
10. To stop the tractor, pull the hydrostatic control lever into NEUTRAL (N) or depress the clutch-brake pedal.
11. To shut off the engine, turn the ignition key to the left to the OFF position. Remove the key to prevent accidental starting while equipment is unattended.

Be sure that the lawn is clear of stones, sticks, wire, or other objects which could damage lawn tractor or engine. For best results and to insure more even grass distribution, do not mow when lawn is excessively wet.



**WARNING:** Before leaving the operator's position for any reason, disengage the blades, place the shift lever in neutral, engage the parking brake, shut engine off and remove the key.

When stopping the unit to empty a grass bag, etc., follow the instructions above. This procedure will also eliminate "browning" the grass, which is caused by hot exhaust gases from a running engine.

**IMPORTANT:** If you strike a foreign object, stop the engine. Remove wire from spark plug, thoroughly inspect the mower for any damage, and repair the damage before restarting and operating the mower.

**NOTE:** If any problems are encountered, refer to the *Trouble Shooting Charts* on pages 19 and 20.

GRASS COLLECTOR Model 190-083 is available as optional equipment for the lawn tractor shown in this manual.

**WARNING:** The mower should not be operated without the entire grass catcher or chute deflector in place.

**NOTE:** Under normal usage bag material is subject to wear, and should be checked periodically. Be sure any replacement bag complies with the mower manufacturer's recommendations.

For replacement bags, use only factory authorized replacement bag.

## ADJUSTMENTS

**WARNING:** Disconnect the spark plug wire and ground against the engine before performing any adjustments, repairs or maintenance.

### SEAT ADJUSTMENT

To adjust the position of the seat, loosen the four self-tapping screws on the bottom of the seat. See figure 3. Slide the seat forward or backward as desired. Retighten the self-tapping screws.

### NEUTRAL ADJUSTMENT

To check the neutral adjustment of the hydrostatic control lever, proceed as follows.

Place the hydrostatic control lever in the forward position, then depress the clutch-brake pedal all the way. The lever should move to the neutral position. Place the hydrostatic control lever in the reverse position, then depress the clutch-brake pedal all the way. The lever should adjust to neutral.

To adjust: (See figure 15)

1. Loosen the lock nut on the neutral return rod. Disconnect the ferrule on the neutral return rod from the speed selector handle bracket.
2. With the clutch-brake pedal depressed, place the hydrostatic control lever in neutral.

3. Adjust the ferrule on the rod until it lines up with the hole in the speed selector handle bracket.
4. Reassemble the ferrule to the speed selector handle bracket. Tighten the lock nut against the ferrule.
5. Check the adjustment of the hydrostatic transmission control as instructed in the next section.

### HYDROSTATIC CONTROL ADJUSTMENT

The hydrostatic transmission control is in correct adjustment when the tractor does not move with the engine running, the clutch engaged and the hydrostatic control lever in the neutral position.

If adjustment is necessary, follow these steps:

1. Raise both rear wheels off the ground by placing blocks under the rear frame.
2. Loosen the lock nut (left hand thread) on the end of the control rod. See figure 15.

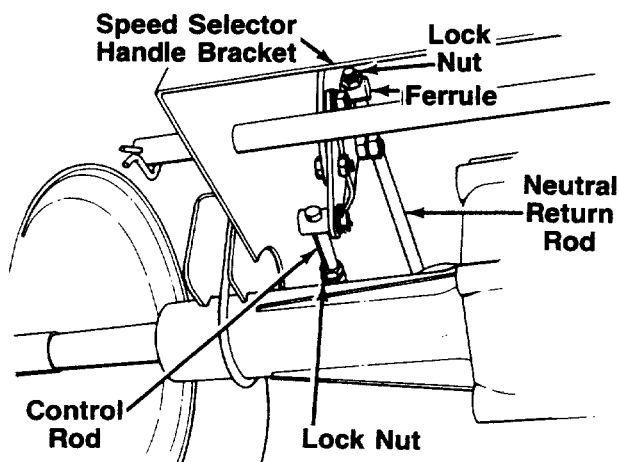


FIGURE 15.

3. Place the hydrostatic control lever in the neutral position.
4. Start the tractor.
5. Release the clutch-brake pedal.

**NOTE:** DO NOT set the parking brake or the relief valve.

**WARNING:** Be careful of the cooling fan on the hydrostatic transmission.

6. Turn the control rod back and forth until the rear wheels do not rotate.
7. Shut off the engine.
8. Tighten the lock nut on the control rod.
9. Remove the blocks under the tractor frame and test the tractor operation.

### LEVELING THE DECK

1. Check tire pressure in all four tires. Recommended pressure is approximately 12 p.s.i.

2. Make certain all deck wheels are mounted in same relative location.
3. On a level surface, engage the PTO and lower the deck until it reaches the ground.

All four deck wheels should reach the ground at the same time. If they do not, adjust the deck links as necessary.

**NOTE:** When adjusting the deck links, disengage the PTO. Remove the hairpin clip and washer from the weld bolt. Thread eyebolt up or down the link as necessary, and reassemble.

4. Raise the deck 1/2" to 1" above the ground.

Check to be certain the distance from the bottom edge of the deck to the ground is the same on both sides of the deck. If it is not, adjust the links on the left side of the unit.

Check to be certain the front of the deck is 1/4" to 3/8" lower than the rear of the deck. If it is not, adjust the two front links to obtain this distance.

## STEERING WHEEL ADJUSTMENT

There are four height positions for the steering wheel. To adjust the height of the steering wheel, remove the hex bolt and hex lock nut on the steering shaft. Place the steering wheel in the position desired and secure with hex bolt and hex lock nut. Refer to figure 4.

**NOTE:** When raising the height of the steering wheel, stretch the steering bellows to cover the steering shaft.

The steering shaft may also be adjusted if there is too much play between the steering gear and segment. To adjust, loosen the hex bolt and nut on the front of the bearing retainer bracket. See figure 16. Pry the bearing retainer bracket toward the right until the steering gear engages solidly into the teeth of the steering segment. Retighten the hex bolt and nut.

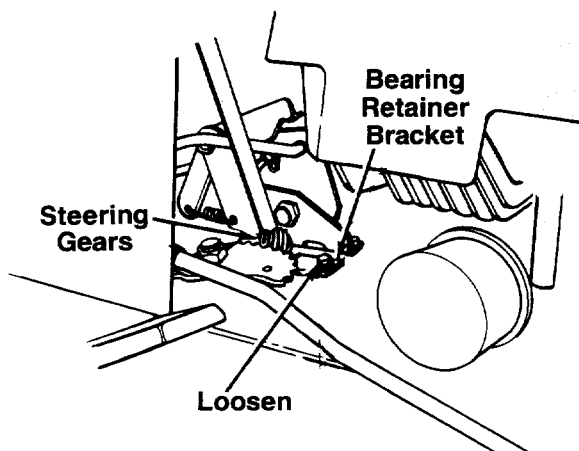


FIGURE 16.

## BRAKE ADJUSTMENT (See figure 17)

The brake is located by the right rear wheel inside the frame. During normal operation of this machine, the brakes are subject to wear and will require periodic examination and adjustment.



**WARNING:** Do not adjust the brake while the engine is running. Be sure to block the wheels of the tractor before making the brake adjustment.

To adjust the brake, remove the cotter pin. Adjust the castle nut so the brake starts to engage when the brake lever is 1/4" to 5/16" away from the axle housing.

**NOTE:** Figure 17 is shown with the unit tipped up on rear wheels for clarity only.

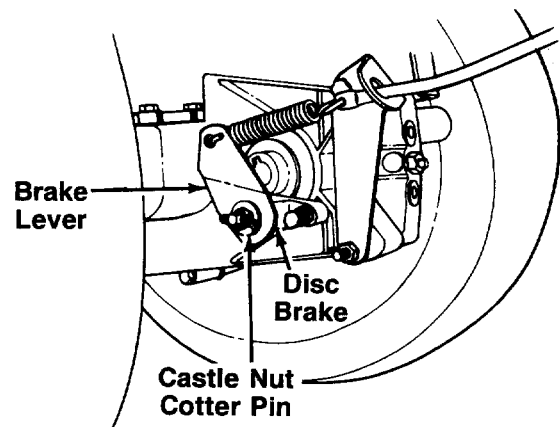


FIGURE 17.

## CARBURETOR ADJUSTMENTS



**WARNING:** If any adjustments are made to the engine while the engine is running (e.g. carburetor), disengage all clutches and blades. Keep clear of all moving parts. Be careful of heated surfaces and muffler.

Minor carburetor adjustments may be required to compensate for differences in fuel, temperature, altitude and load. Refer to separate engine manual for carburetor adjustment information.

**NOTE:** A dirty air cleaner will cause an engine to run rough. Be certain air cleaner is clean and attached to the carburetor before adjusting carburetor.

## LUBRICATION



**WARNING:** Always stop engine and disconnect spark plug wire before cleaning, lubricating or doing any kind of work on lawn tractor.

## STEERING GEARS

Lubricate teeth of steering gears with automotive multi-purpose grease after every 25 hours of operation or once a season. Refer to figure 16.

## STEERING SHAFT

Lubricate steering shaft at least once a season with light oil.

## TRANSAXLE

The transaxle is lubricated and sealed at the factory and does not require checking. If disassembled for any reason, lubricate with 16 oz. of grease, part number 737-3047.

## LINKAGE

Once a season lubricate all the pivot points on the clutch, brake and lift linkage with SAE 30 engine oil.

## FRONT WHEELS

The front wheels are provided with grease fittings. The rear wheels must be removed from the axle for lubrication. Lubricate at least once a season with automotive multi-purpose grease.

## PIVOT POINTS

Lubricate all pivot points with light oil at least once a season.

## BALL JOINTS

The ball joints and drag link ends are permanently lubricated.

## HYDROSTATIC OIL LEVEL

The transmission has been filled at the factory and should not require changing for the life of the transmission.

The transmission fluid level should be checked prior to initial use. The level should not be above the LOWER mark which is about 1/4" from the bottom of the expansion tank. See figure 18. Overfilling reduces the expansion area in the expansion tank and fluid will spill at operating temperatures.

If transmission fluid is needed, use only 10W30 engine oil rated SF or CD.

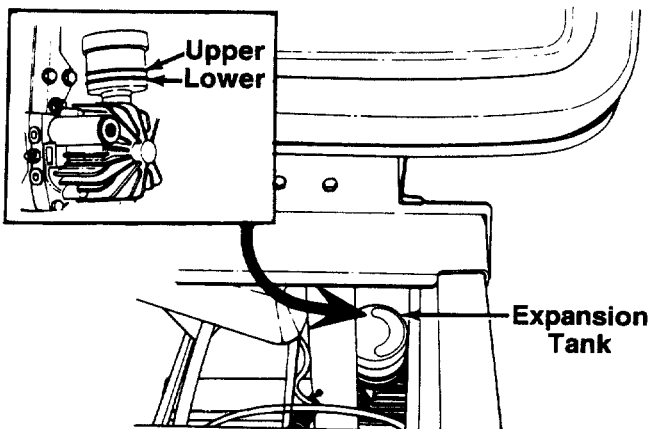


FIGURE 18.

To check or add fluid to the transmission:

1. Unscrew the parking brake and relief valve knobs.
2. Unscrew the two screws holding the access cover located in front of the seat.
3. Check the fluid level in the expansion tank. See figure 18.
4. If it is necessary to add fluid, unscrew the cap on the expansion tank. The cap has left hand threads. See figure 19. **Remove the rubber bladder.** Add fluid using a funnel. Do not overfill.
5. Reassemble parts.

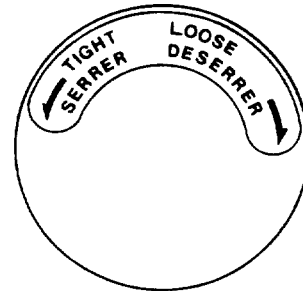


FIGURE 19.

If frequent additions are required, locate the leak and correct. Inadequate supply of fluid may result in permanent internal damage.

If the natural color of the transmission fluid has changed, black or milky, overheating and/or water contaminate is indicated. The fluid should be drained and replaced with new transmission fluid.

To drain the hydrostatic transmission, remove the hex plug on the bottom of the hydrostatic transmission.

## HYDROSTATIC TRANSMISSION COOLING

The hydrostatic transmission is cooled by the oil, fan and fins. If the hydrostatic transmission runs hot, check to see if the fan is in operating condition, the oil level is correct and the fins are clean.

**NOTE: DO NOT use high pressure water spray or steam to clean the hydrostatic transmission.**

## MAINTENANCE



**WARNING: Disconnect the spark plug wire and ground against the engine before performing any adjustments, repairs or maintenance.**

## TROUBLE SHOOTING

Refer to the chart on pages 19 and 20 for trouble shooting engine problems.

## CRANKCASE OIL

Check the oil level in the crankcase before each use of the machine and after every two hours of operation. Oil level should be maintained as instructed in the separate engine manual.

After the first two hours of operating a new engine, drain the oil from the crankcase while engine is still hot and refill crankcase with new oil; thereafter change the oil after every 25 hours of operation. Refer to the engine manual.

### FUEL FILTER

Your unit is equipped with a replaceable in-line fuel filter. Replace filter whenever contamination or discoloration is noticed. Order replacement filter through your authorized engine service dealer.

### WHEEL ADJUSTMENT

The caster (forward slant of the king pin) and the camber (tilt of the wheels out at the top) require no adjustment. Automotive steering principles have been used to determine the caster and camber on the tractor. The front wheels should toe-in 1/8 inch.

To adjust the toe-in, follow these steps.

1. Remove the hex nut and lock washer, and drop the end of the tie rod from the axle bracket. See figure 20.
2. Loosen the hex jam nut on tie rod.
3. Adjust the tie rod assembly for correct toe-in.

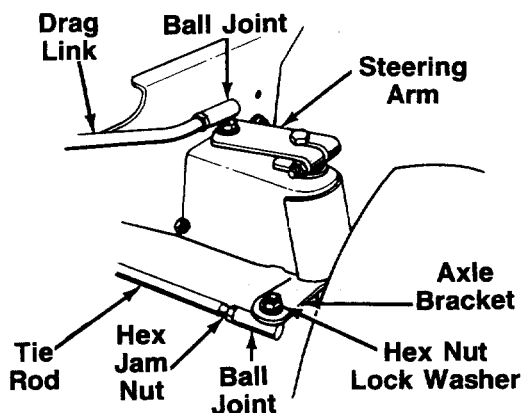


FIGURE 20.

Dimension "B" should be approximately 1/8" less than Dimension "A." See figure 21. To increase Dimension "B," screw tie rod into tie rod end. To decrease Dimension "B," unscrew tie rod from tie rod end. Reassemble tie rod. Check dimensions. Readjust if necessary.

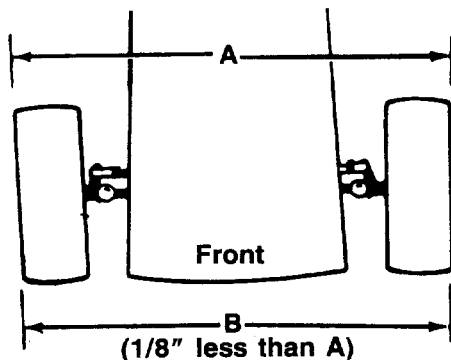


FIGURE 21.

### DRAG LINK

If the drag link or ball joints are changed, the new assembly must be adjusted to the exact same length as the original. If adjusted incorrectly, it will allow the tractor to turn sharper one direction than the other.

To take off the drag link, remove the nuts and lock washers holding the ball joint to the steering gear and right front axle bracket. See figure 20.

### ENGINE

Refer to separate engine manual for all engine maintenance procedures.

### MAINTENANCE OF BATTERY

1. Check electrolyte level periodically (at least every two weeks). Keep the level to the split rings. Use only distilled water or a good quality drinking water. Never add acid or any other chemicals to the battery after initial activation.
2. The battery should be checked with a hydrometer after every 25 hours of operation. If the specific gravity is less than 1.225, the battery should be recharged. Maximum charge rate 5 AMPS.
3. Coat the terminals and exposed wire with a thin coat of grease or petroleum jelly for longer service and protection against corrosion.
4. The battery should be kept clean. Any deposits of acid should be neutralized with soda and water. Be careful not to get this solution in the cells.
5. Avoid tipping the battery. Even a "sealed" battery will leak electrolyte when tipped.

### STORAGE OF THE BATTERY

1. Charge battery using normal methods. NEVER store discharged battery as it will not recover.
2. When storing battery for extended periods, disconnect battery cables. Removing battery from unit is recommended.
3. Store in cold, dry place.
4. Recharge battery whenever the specific gravity is less than 1.225, before returning to service, or every two months, whichever occurs first.

### COMMON CAUSES FOR BATTERY FAILURE

1. Overcharging
2. Undercharging
3. Lack of water
4. Loose hold downs and/or corroded connections
5. Excessive loads
6. Battery electrolyte substitutes
7. Freezing of electrolyte

NOTE: These failures do not constitute warranty.



## BATTERY REMOVAL OR INSTALLATION



**WARNING:** When removing the battery, follow this order of disassembly to prevent your wrench from shorting against the frame.

1. Remove the Negative cable.
2. Remove the Positive cable.

To install a battery:

1. Attach the Positive cable.
2. Attach the Negative cable.

## JUMP STARTING

1. Attach the first jumper cable from the Positive terminal of the good battery to the Positive terminal of the dead battery.
2. Attach the second jumper cable from the Negative terminal of the good battery to the FRAME OF THE UNIT WITH THE DEAD BATTERY.



**WARNING:** Failure to use this starting procedure could cause sparking, and the gases in either battery could explode.

## TIRES

Recommended operating tire pressure is approximately 12 p.s.i. (check sidewall of tire for tire manufacturer's recommended pressure). Maximum tire pressure under any circumstances is 30 p.s.i. Equal tire pressure should be maintained on all tires.

When installing a tire to the rim, be certain rim is clean and free of rust. Lubricate both the tire and rim generously. Never inflate to over 30 p.s.i. to seat beads.



**WARNING:** Excessive pressure (over 30 p.s.i.) when seating beads may cause tire/rim assembly to burst with force sufficient to cause serious injury.

## DRIVE BELT REPLACEMENT (See figure 22)

1. Depress the clutch pedal and set parking brake.
2. Remove the deck from the tractor.
3. Raise and block the front wheels of the tractor so you can work under it.
4. Remove the four self-tapping screws which hold the belt keeper assembly to the frame at the engine pulley. Push the belt keeper assembly forward, out of the way. See figure 22.

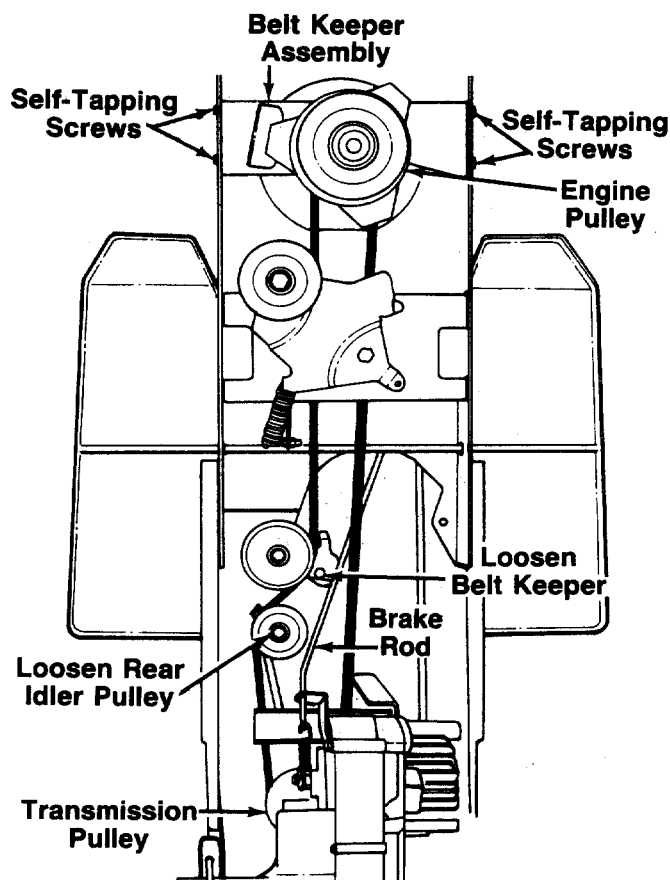


FIGURE 22.

5. Remove the rear belt guard at the transmission pulley by removing the two self-tapping screws shown in figure 23.
6. Loosen the hex bolt which acts as a belt keeper by the front idler pulley.
7. Loosen the rear idler pulley. Remove the belt from around both idler pulleys.

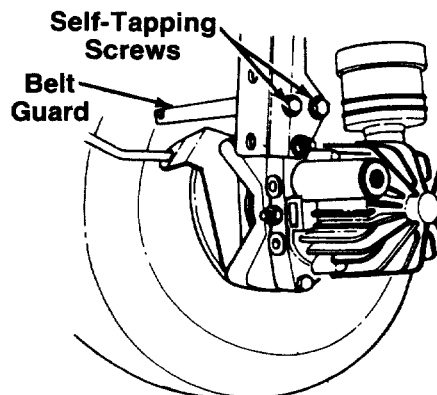


FIGURE 23.

8. Unplug the electric PTO.
9. Roll belt up off engine pulley, onto the pulley hub to obtain slack in the belt.
10. Remove belt from the transmission pulley, lifting the belt up over the fan on top of the pulley.

11. Remove belt from the engine pulley.
12. Release the parking brake (be certain unit is blocked securely). Disconnect the brake rod from the clutch-brake pedal by removing the hairpin clip and flat washer. See figure 24.
13. Remove the belt from around the brake rod.

Reassemble using a new belt, following instructions in reverse order.

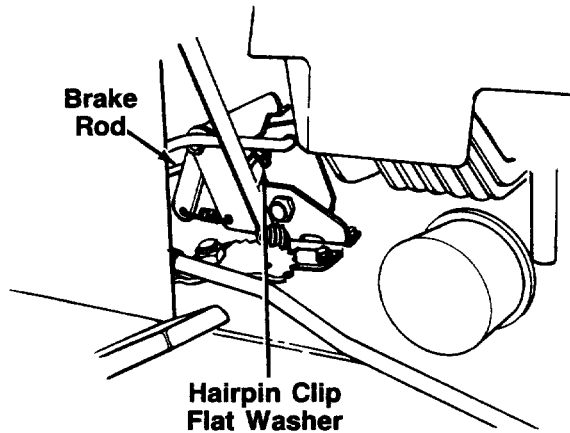


FIGURE 24.

---

## OFF-SEASON STORAGE

---

If the machine is to be inoperative for a period longer than 30 days, prepare for storage as follows.

1. Clean the engine and the entire unit thoroughly.
2. Lubricate all lubrication points. Wipe the entire machine with an oiled rag to protect the surfaces.
3. Refer to the engine manual for correct engine storage instructions. The engine must be completely drained of fuel to prevent gum deposits from forming on essential carburetor parts, fuel lines and fuel tanks.
4. Refer to battery storage instructions on page 16.
5. Store unit in a clean, dry area.

**NOTE:** When storing any type of power equipment in an unventilated or metal storage shed, care should be taken to rustproof the equipment. Using a light oil or silicone, coat the equipment, especially any chains, springs, bearings and cables.

## TROUBLE SHOOTING CHART FOR ELECTRIC START MODELS

TROUBLE	LOOK FOR	REMEDY
Engine will not crank	Battery installed incorrectly	The battery must be installed with the negative terminal, identified at the terminal post by (Neg, N or -), grounded. The positive terminal (Pos, P or +) attaches to the large cable from the solenoid. The small red wire from the fuse holder or circuit breaker is also attached to the positive terminal.
	Blown fuse or circuit breaker	Replace fuse with 7½ amp. fuse ¼ x 1¼" lg. Circuit breaker will reset itself when it cools off. Fuses or circuit breakers seldom open or fail without a reason. The problem must be corrected. Check for loose connections in the fuse holder. Replace fuse holder if necessary. A dead short may be in the cranking or charging circuit where the insulation may have rubbed through and exposed the bare wire. Replace the wire or repair with electrician's tape if the wire strands have not been damaged. Note: Look for a wire pinched between body panels, burned by the exhaust pipe or muffler or rubbed against a moving part.
	Battery is dead or weak	<p>Use a hydrometer to check the condition of the battery. The Specific Gravity (s.g.) should be 1.265 at 80°F. (1.215 s.g. minimum needed for cranking engine). The reason for the battery failing must be determined. (1) Defective battery. Battery will not accept or hold a full charge. (2) Short circuit. Check for grounded wire. (3) Charging system not working.</p> <p>The charging system is an alternator located under the flywheel. It is unregulated and rated 3 amp. at 3600 r.p.m. A diode (rectifier) is located in the output lead just before the wire harness plug on the engine side.</p> <div style="text-align: center;"> </div> <p>The diode changes A.C. to D.C. to charge the battery. A bad diode can either fail to charge the battery or discharge the battery if the alternator is shorted as well as the diode. To test: (1) Disconnect charger lead from the battery (small red wire). (2) Connect 12 V small test lamp between the 3 amp. D.C. charge lead and the positive terminal of the battery. (3) With the engine off, the lamp should not light. If it does, the diode and possibly the alternator should be replaced. (4) Start the engine. The lamp should light. If it does not, the alternator (stator) or lead wire is bad and should be replaced.</p>
Mechanical failure (Wires and switches)	The interlock system includes two mechanical activated switches which are wired in series in the circuit used to energize the starter solenoid. While testing the interlock system, you will make the mower temporarily unsafe by permitting the engine to be started with the blade and clutch engaged. <b>WARNING:</b> While testing, disengage the clutch, shut off the blade control, set the parking brake and place the gear shift lever in neutral. Attach a wire (minimum 18 gauge) to the positive terminal of the battery and touch the other end to the small terminal on the solenoid. <b>If the engine does not crank:</b> (1) There is a loose connection or poor ground. (2) The solenoid may be bad. The solenoid can be checked by using a heavy wire (#8 gauge minimum) and jumping between the two large terminals. If the engine cranks, the solenoid is bad. (3) If the engine does not crank when you jump the solenoid, have the starter motor tested by an authorized engine dealer. If the engine does crank, the problem is with one of the safety switches, ignition switch or the wire between the fuse holder (or circuit breaker) and the small terminal on the solenoid. Note: Look for a poor connection at the switches or a defective switch. Replace if necessary.	
Engine cranks but will not start	Throttle or choke not in starting position	Check owner's guide for correct position for throttle control and choke for starting.
	No spark to spark plug	<p>Spark plug lead disconnected. Connect lead. Hold spark plug lead away from engine block about 1/8". Crank engine. There should be a spark. If not, have engine repaired at authorized engine service dealer.</p> <p>Faulty spark plug. To test, remove spark plug. Attach spark plug lead to spark plug. Ground the spark plug body against the engine block. Crank the engine. The spark plug should fire at the electrode. Replace if it does not.</p>

## TROUBLE SHOOTING CHART FOR ELECTRIC START MODELS

TROUBLE	LOOK FOR	REMEDY
	No fuel to the carburetor	Gasoline tank empty. Fill. Fuel line or in-line fuel filter plugged. Remove and clean fuel line. Replace filter if necessary.
	Air filter dirty	If the air cleaner is dirty, the engine may not start. Clean or replace as recommended by the engine manufacturer.
Engine smokes	Engine loses crankcase vacuum	Dipstick not seated or broken. Replace defective part. Engine breather defective. Replace.
Excessive vibration	Bent or damaged blade spindle	<b>Stop engine immediately.</b> Check all pulleys, blade adapters, keys and bolts for tightness and damage. Tighten or replace any damaged parts.
	Bent blade	<b>Stop engine immediately.</b> Replace damaged blade. Only use original equipment blades.
Mower will not discharge grass or leaves uncut strips	Engine speed low Transmission selection Blades short or dull	Throttle must be set between 3/4 and full throttle. Use lower transmission speed. The slower your ground speed, the better the quality of cut. Sharpen or replace blades (uncut strip problem only).

## HYDROSTATIC TRANSMISSION TROUBLE SHOOTING

No output torque (power) in either direction, cold start.	<ol style="list-style-type: none"> <li>1. Recheck relief valve position, control linkage, input drive.</li> <li>2. Oil level in reservoir low.</li> <li>3. Broken control shaft dowel pin. Transmission must be repaired or replaced.</li> </ol>
Loss of output torque, continuous load.	<ol style="list-style-type: none"> <li>1. Operating at conditions approaching hydraulic stall. The transmission fluid has exceeded 180° F.</li> <li>2. Internal leakage due to wear. Transmission should be repaired or replaced.</li> <li>3. Water in transmission fluid. Purge system of all fluid and replace with new transmission fluid. Replacement of the transmission is generally not necessary.</li> </ol>
No output torque in one direction.	<ol style="list-style-type: none"> <li>1. One of the directional valves is stuck. Transmission should be repaired or replaced.</li> <li>2. Low oil level.</li> </ol>
Lawn tractor cannot be pushed with engine off.	<ol style="list-style-type: none"> <li>1. Relief valve control not set.</li> <li>2. Relief valve travel not adjusted.</li> <li>3. Motor piston or rotor seized. Transmission must be repaired or replaced.</li> </ol>
No neutral.	<p>Recheck linkage. Loose linkage creates an adjustment problem.</p> <p>Note: The hydraulic neutral band is very narrow. Deflection in the linkage may make it difficult to obtain neutral from both directions. It is recommended that neutral should be positive from forward drive.</p>
Oil leakage at the control shaft seal.	<ol style="list-style-type: none"> <li>1. Spillage when fluid has been added to the reservoir.</li> <li>2. Spillage at the vent in the reservoir at operating temperatures due to cold level being too high or water in the fluid. Reduce fluid level or replace fluid in the event there is water in it (milky color).</li> <li>3. Loose oil reservoir or cover.</li> <li>4. Loose vent bolt.</li> <li>5. Damaged control shaft seal. Transmission should be repaired.</li> </ol>
Noisy operation.	<ol style="list-style-type: none"> <li>1. Operating at part throttle. Hydrostatic transmission is designed to operate with the engine running at full throttle.</li> <li>2. Water in transmission fluid. Replace transmission fluid.</li> <li>3. Air in transmission fluid. Bleed air from vent.</li> </ol>
Output shaft rotates in the opposite direction.	The transmission body is 180° out of position. Transmission has to be removed and reassembled correctly.

---

---

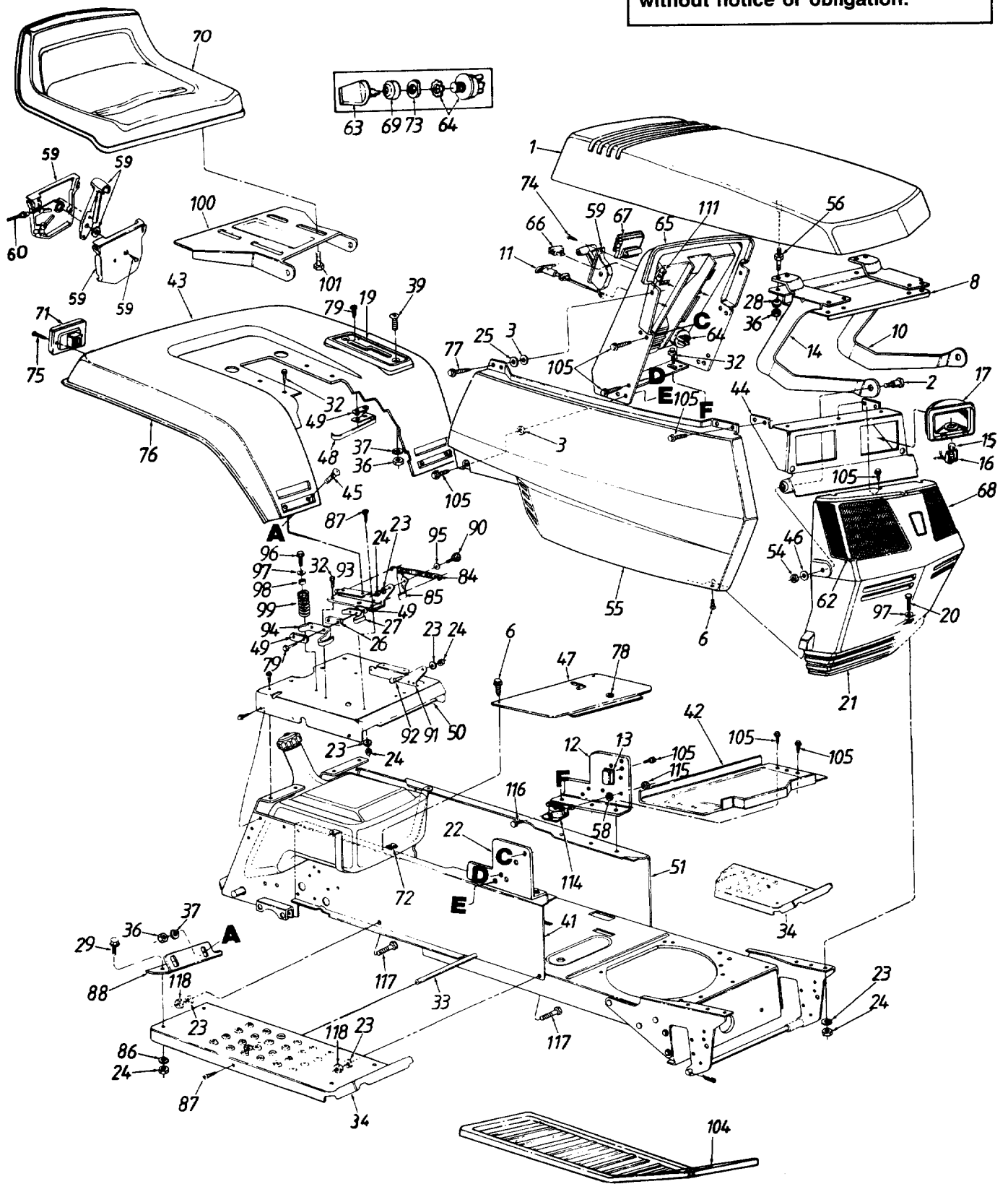
## NOTES

---

---

# 130824H

➔ **NOTE**  
**Specifications subject to change without notice or obligation.**



# 130824H

## PARTS LIST FOR MODEL 130824H LAWN TRACTOR

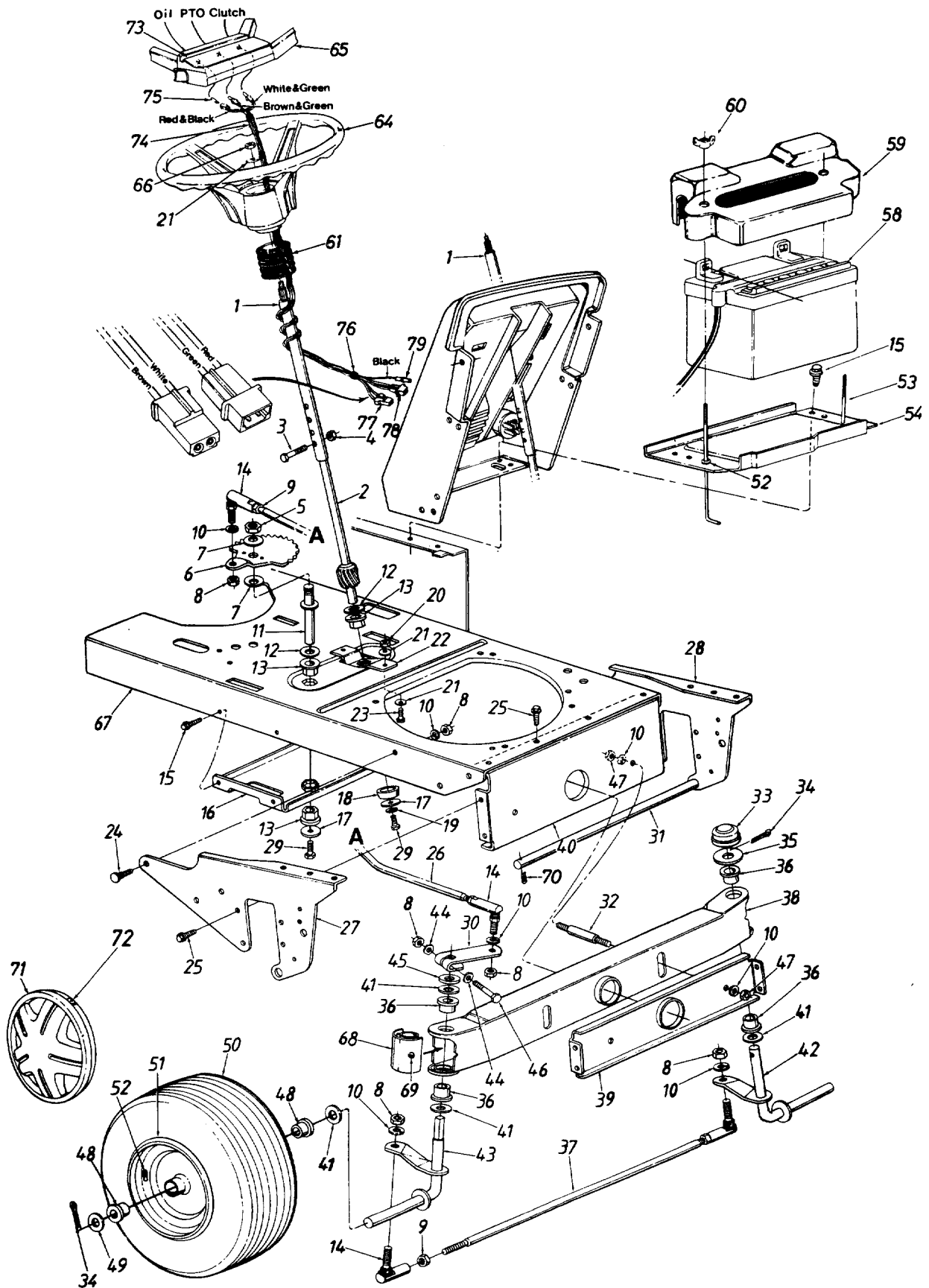
REF. NO.	PART NO.	CODE	DESCRIPTION	REF. NO.	PART NO.	CODE	DESCRIPTION
1	16823	638	Hood	60	746-0634		Throttle Control Wire 35" Lg.
2	738-0141		Shld. Bolt .437" Dia. x .35"	62	731-0948		Lens—R.H.
3	726-0233		Bolt Retainer 1/4" I.D.	63	725-1341B		Ignition Key
6	710-0351		Truss Mach. B-Tap Scr. #10 x .5" Lg.	64	725-0267		Ignition Switch
8	16808		Hood Reinforcement	65	731-0958		Dash Panel
10	17271		Hood Hinge—L.H.	66	725-0634		Light Switch
11	746-0613A		Choke Control	67	725-0925		Ammeter
12	17294		Dash Support Brkt.—L.H.	68	731-0949		Lens—L.H.
13	725-1382		Circuit Breaker	69	725-1347		Ignition Switch Cap
14	17270		Hood Hinge—R.H.	70	757-0350		Seat Ass'y.
15	725-0963		Lamp	71	725-3018		Taillight Ass'y.
16	725-1058A	N	Twist Lock—Lamp Socket	72	726-0139		Speed Nut #10Z
17	731-0705		Headlight Housing	73	725-1346		Ignition Switch Nut
19	731-1053		Speed Control Index Brkt.	74	710-0779A		Truss Mach. AB-Tap Scr. #10 x .5" Lg.
20	710-0118		Hex Bolt 5/16-18 x .75" Lg.*	75	710-0936		Truss Hd. AB-Tap Scr. #6 x .62" Lg.
21	731-0935A		Grille	76	731-0511		Trim Strip—81"
22	17293		Dash Support Bracket—R.H.	77	710-0642		Hex Wash. Hd. Tap Scr. 1/4 x .75" Lg.
23	736-0119		L-Wash. 5/16" I.D.*	78	731-0405		Snap Bushing
24	712-0267		Hex Nut 5/16-18 Thd.*	79	710-0227		Hex Wash. Hd. AB-Tap Scr. #8 x .50" Lg.
25	736-0176		Fl-Wash. 1/4" I.D. x .93" O.D.	84	732-0581		Ext. Spring 5.31" Lg.
26	726-0275	N	Insulator Center Plate	85	17239A		Seat Lift Brkt.
27	725-1439	N	Seat Spring Switch	86	736-0242		Bell-Wash. .345" I.D. x .88" O.D.
28	736-0270		Bell-Wash. .265" I.D. x .75"	87	710-0323		Truss Machine Scr. 5/16-18 x .75" Lg.
29	710-0376		Hex Bolt 5/16-18 x 1.0" Lg.*	88	17406		Fender Bracket—R.H.
32	710-0726		Hex Wash. Hd. AB-Tap Scr. 5/16 x .75" Lg.		17407		Fender Bracket—L.H.
33	738-0435		Running Board Rod	90	738-0296		Shld. Bolt .437" Dia. x .268"
34	16922		Running Board—R.H.	91	17701	N	Seat Pivot Brkt. Support—L.H.
	16921		Running Board—L.H.	92	738-0155		Shld. Bolt .437" Dia. x .162"
36	712-0287		Hex Nut 1/4-20 Thd.*	93	17702	N	Seat Pivot Brkt. Support—R.H.
37	736-0329		L-Wash. 1/4" I.D.*	94	725-1303		Spring Switch
39	710-0166		Truss Mach. Scr. 1/4-20 x 1.0" Lg.	95	736-0141		Spr.-Wash. .445" I.D.
41	17360		R.H. Side Frame	96	710-0601		Hex Wash. Hd. Tap Scr. 5/16-18 x .75" Lg.
42	17635		Battery Plate	97	736-0159		Fl-Wash. .344" I.D.
43	17330	499	Rear Fender	98	722-0160		Bushing
44	17223		Light Bracket	99	732-0588		Compression Spring
45	710-0167		Carriage Bolt 1/4-20 x .50" Lg.*	100	15607D		Seat Pivot Bracket
46	736-0278		Fl-Wash. .328" I.D. x .68" O.D.	101	710-0623		Hex Tap Scr. 3/8-16 x .75"
47	17393		Transmission Panel	104	731-1051		Foot Pad
48	725-0759		Reverse Safety Switch	105	710-0599		Hex Tap Scr. 1/4-20 x .5" Lg.
49	726-0276	N	Insulator End Plate	111	712-0185		Speed Nut 1/4-20 Thd.
50	16848A	N	Seat Plate	114	725-1426	N	Solenoid
51	17361		L.H. Side Frame	115	712-0271		Hex Sems Nut 1/4-20 Thd.
54	712-0158		Hex Cent. L-Nut 5/16-18 Thd.	116	710-0289		Hex Bolt 1/4-20 x .5" Lg.*
55	17448	499	Side Cover—R.H.	117	710-1012		Rib Neck Bolt 5/16-24 x .75" Lg.
	17447	499	Side Cover—L.H. (Not Shown)	118	712-0123		Hex Nut 5/16-24 Thd.
56	710-1034		Double Ended Stud 1/4-20 Thd.				
58	736-0222		Ext. L-Wash. 1/4" I.D.				
59	831-0823A		Throttle Control Box Ass'y.				

\*For faster service obtain standard nuts, bolts and washers locally. If these items cannot be obtained locally, order by part number and size as shown on parts list.

**CODE: N** notates a **new part** (not previously existing). A three digit number is the **color code**. Specify color code as shown below if color or finish is important when ordering parts. [i.e., 638 for Red Finish].

499—Beige  
638—Red

# 130824H





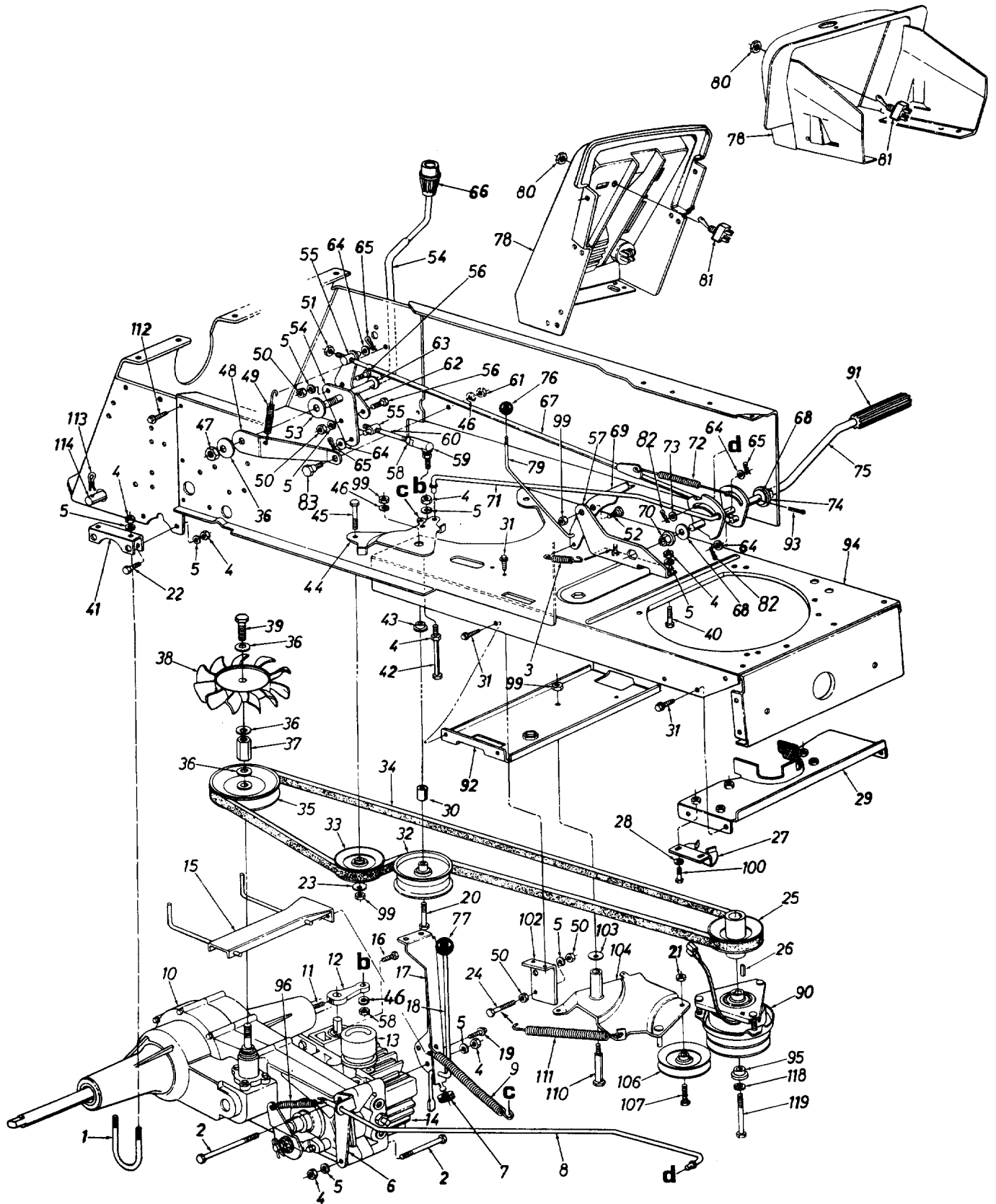
# 130824H

## PARTS LIST FOR MODEL 130824H LAWN TRACTOR

REF. NO.	PART NO.	CODE	DESCRIPTION	REF. NO.	PART NO.	CODE	DESCRIPTION
1	16512		Steering Column Ass'y.	37	747-0721		Tie Rod 20.25" Lg.
2	738-0763		Lower Steering Shaft	38	16843		Pivot Bar Assy.
3	710-0958		Hex Bolt 1/4-20 x 1.31" Lg.	39	16889		Pivot Bar Support Brkt.—Front
4	712-0324		Hex L-Nut 1/4-20 Thd.	40	16890		Pivot Bar Support Brkt.—Rear
5	712-0337		Hex Nut 5/8-18 Thd.*	41	736-0188		FI-Wash. .76" I.D. x 1.49" O.D.
6	717-0943A	N	Steering Gear Segment	42	738-0781		Front Axle Ass'y.—L.H.
7	736-0317		Bell-Wash. 5/8" I.D. x 1.25" O.D.	43	738-0782		Front Axle Ass'y.—R.H.
8	712-0241		Hex Nut 3/8-24 Thd.	44	736-0286		Bowed Washer
9	712-0711		Hex Jam Nut 3/8-24 Thd.	45	748-0160		Spacer .755" I.D. x 1.25" O.D.
10	736-0169		L-Wash. 3/8" I.D.*	46	710-0331		Hex Bolt 3/8-24 x 2.25" Lg.
11	738-0768		Steering Gear Segment Shaft	47	712-0798		Hex Nut 3/8-16 Thd.*
12	736-0187		FI-Wash. .64" I.D. x 1.24" O.D.	48	748-3007A	N	Bronze Flange Brg. .75" I.D.
13	748-0227		Hex Flange Brg. .63" I.D.	49	736-0316	N	FI-Wash. .71" I.D. x 1.5" O.D.
14	723-3018		Ball Joint Ass'y.	50	734-1676	N	Wheel Ass'y. Comp.
15	710-0599		Hex Wash. Hd. TT-Tap Scr. 1/4-20 x .5" Lg.	51	734-0864		Tire Only
16	16888		Deck Idler Support Brkt.	52	734-0961A	N	Rim Only
17	736-0343		FI-Wash. .33" I.D. x 1.25" O.D.	53	726-0271		Push Nut
18	750-0532		Spacer .985" I.D. x 1.25" O.D.	54	711-0222		Battery Hold Down Rod
19	736-0119		L-Wash. 5/16" I.D.*	55	17635	N	Battery Plate
20	712-0123		Hex Nut 5/16-24 Thd.*	58	725-1430	N	Battery (275 Cold Crank Amps)
21	736-0242		Bell-Wash. .345" I.D. x .88" O.D.	59	731-1132		Battery Cover
22	16894		Bearing Retainer Brkt.	60	712-0113		Wing Nut Plastic 1/4-20 Thd.
23	710-0157		Hex Bolt 5/16-24 x .75" Lg.	61	731-0954		Steering Bellow
24	710-0793		Ribbed Neck Bolt 3/8-24 x .8" Lg.	64	731-0806A		Steering Wheel
25	710-0604		Hex Wash. TT-Tap Scr. 5/16-18 x .62" Lg.	65	731-0955		Steering Wheel Insert
26	747-0579		Steering Drag Link	66	712-0237		Hex L-Nut 5/16-24 Thd.
27	16896		Pivot Bar Side Plate—R.H.	67	17359A	N	Lower Frame
28	16897		Pivot Bar Side Plate—L.H.	68	731-1049		Pivot Bar End Cap
29	710-0538		Hex Bolt 5/16-18 x .62" Lg.	69	737-0146		Grease Fitting
30	16918		Steering Arm	70	714-0149B		Internal Cotter Pin
31	738-0777		Deck Connecting Rod	71	734-1612	N	Hub Cap
32	738-0775		Pivot Bar Shld. Bolt 3/8-16 x 5/8" Lg.	72	727-0425		Spring Clip
33	731-0484		Cap	73	777-7993		Steering Wheel Insert Label
34	714-0121		Cotter Pin 5/32" Dia.	74	725-1364		Wire Harness (Incl. Ref. 75)
35	736-0316		Flat Washer	75	725-1365		Bulb
36	741-0523		Flange Brg. .757" I.D.	76	729-0204		Clamp
				77	729-0139		Connector
				78	729-0166		Connector
				79	729-0132		Connector

\* For faster service obtain standard nuts, bolts and washers locally.  
If these items cannot be obtained locally, order by part number and size as shown on parts list.

# 130824H

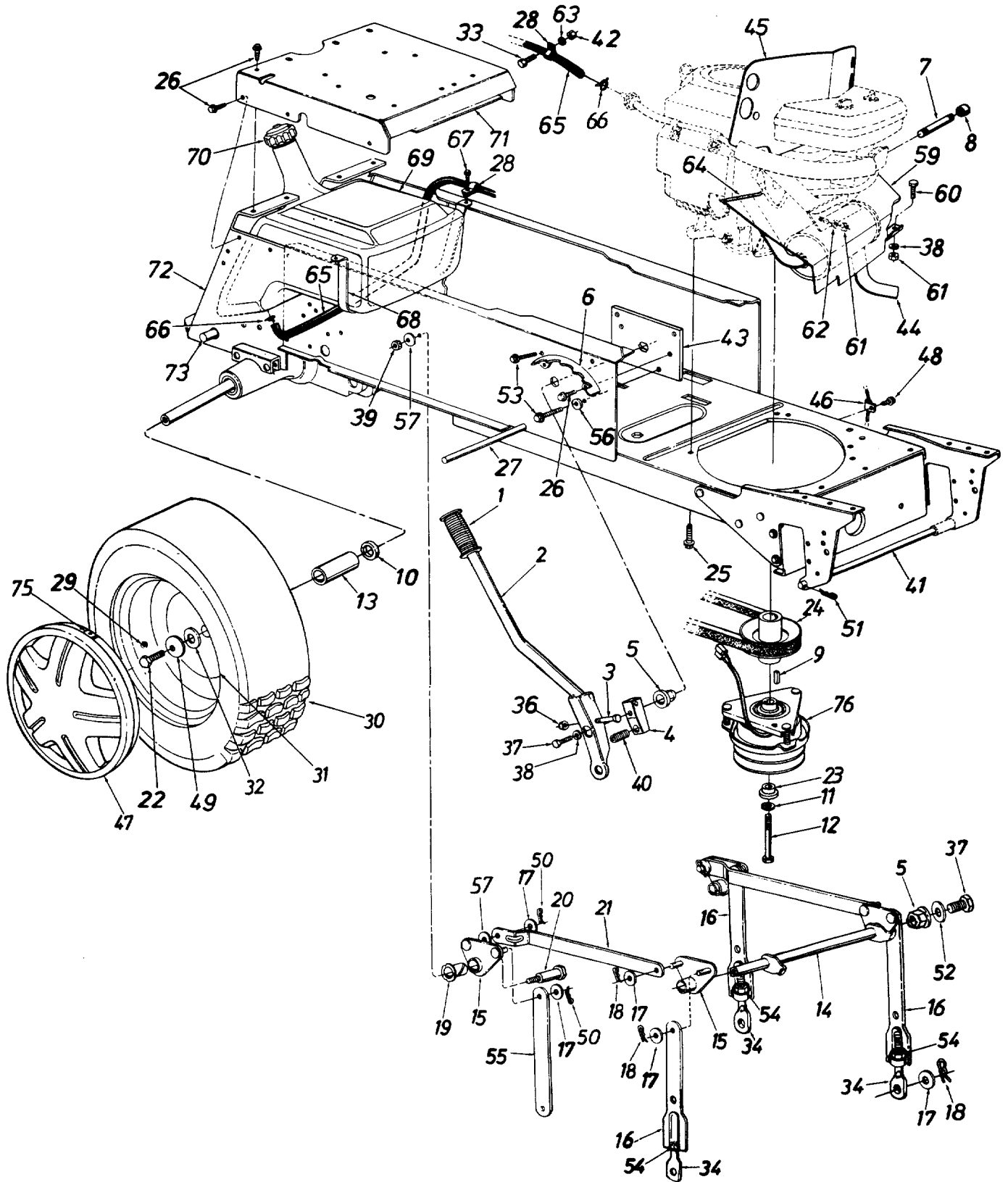


# 130824H

## PARTS LIST FOR MODEL 130824H LAWN TRACTOR

REF. NO.	PART NO.	CODE	DESCRIPTION	REF. NO.	PART NO.	CODE	DESCRIPTION
1	711-0827		U-Bolt 5/16-18 x 3.25" Lg.	52	738-0147		Shld. Bolt .50" Dia. x .170"
2	710-3196		Hex Patch Bolt 5/16-18 x 4.5" Lg. (Gr. 5)	53	736-0428		Fiber Washer .54" I.D. x 1.75"
3	732-0445		Ext. Spring .5" O.D. x 1.55"	54	16930		Speed Control Handle Ass'y.
4	712-0267		Hex Nut 5/16-18 Thd.*	55	711-0198		Ferrule 3/8-24 Thd.
5	736-0119		L-Wash. 5/16" I.D.*	56	710-0237		Hex Bolt 5/16-24 x .62" Lg.
6	17355		Brake Rod Guide Brkt.	57	17348		Foot Pedal Mtg. Brkt.
7	735-0126		Rubber Wash. .33" I.D. x .87"	58	712-0241		Hex Nut 3/8-24 Thd.
8	747-0731		Brake Rod	59	723-0351		Ball Joint Ass'y.
9	732-0384		Ext. Spring .62" O.D. x 6.12" Lg.	60	747-0508		Control Rod 3/8-24 x 3.75" Lg.
10	717-0950		Transaxle	61	712-0798		Hex Nut 3/8-16 Thd.*
11	710-0985		Set Screw 5/16-24 x .38" Lg.	62	16940		Speed Selector Handle Brkt.
12	748-0328		Pintle Shift Lever	63	736-0257		FI-Wash. .531" I.D. x 1.25" O.D.
13	717-3049		Reservoir	64	736-0140		FI-Wash. .385" I.D. x .62" O.D.
14	717-0940		Hydrostatic Pump	65	714-0104		Internal Cotter Pin
15	16929		Belt Guard Ass'y.	66	720-0218		Shift Knob
16	710-3195		Hex Bolt 5/16-18 x 4.5" Lg. (Gr. 5)	67	17416		Neutral Return Rod
17	16807		Transaxle Torque Bracket	68	736-0187		FI-Wash. .64" I.D. x 1.24" O.D.
18	747-0570		Transaxle Control Rod	69	17351		Parking Brake Lock Brkt.
19	710-0603		Hex Wash. Hd. B-Tap Scr. 5/16-18	70	741-0225		Hex Flange Brg. .634" Dia.
20	710-3066		Hex Bolt 3/8-16 x 2.75" Lg.	71	747-0728		Clutch Idler Rod
21	712-0214		Hex Cent. Lock Nut 3/8-16 Thd.	72	732-0608		Extension Spring 8" Lg.
22	710-3008		Hex Bolt 5/16-18 x .75" Lg. (Gr. 5)	73	736-0264		FI-Wash. .344" I.D. x .62" O.D.
23	736-0300		FI-Wash. .385" I.D. x .87" O.D.	74	748-0209		Flange Bearing w/Flats
24	710-0409		Hex Bolt 5/16-24 x 1.75" Lg.	75	17350		Foot Pedal Ass'y.
25	756-0575		Engine Pulley	76	720-0166		Ball Knob Brake
26	714-0118		Sq. Key 1/4 x 1.5" Lg.	77	720-0187		Ball Knob 1/4-20 Thd.
27	17418		Torque Bracket	78	731-0958		Dash Panel Ass'y.
28	736-0242		Bell-Wash. .345" I.D. x .88" O.D.	79	747-0722		Parking Brake Link
29	17357		Belt Keeper Brkt. Ass'y.	80	712-3014		Hex Nut 1/2-27 Thd.
30	711-0396		Spacer .375" I.D. x .75" Lg.	81	725-0893		Toggle Switch
31	710-0599		Hex Wash. Hd. TT-Tap Scr. 1/4-20 x .5" Lg.	82	714-0111		Cotter Pin 3/32" Dia. x 1.0" Lg.
32	756-0515		FI-Idler Pulley 3.25" Dia.	83	738-0183		Shld. Bolt .5" Dia. x .212"
33	756-0116		V-Belt Idler	90	717-0949		Electric Clutch
34	754-0365		V-Belt	91	735-0196		Foot Pad
35	756-0539		Transmission Pulley 4.25" O.D.	92	16888		Deck Idler Support Brkt.
36	736-0112		Bell-Wash. .56" I.D. x 1.5"	93	714-0115		Cotter Pin 1/8" Dia.
37	712-0356		Fan Adapter Nut 9/16-18 Thd.	94	17359A	N	Lower Frame
38	731-0974		Fan	95	738-0785		Shoulder Spacer
39	710-1043		Hex Bolt 9/16-18 x .5" Lg.	96	732-0607		Ext. Spring 3.675" Lg.
40	710-0118		Hex Bolt 5/16-18 x .75" Lg.*	99	712-0375		Hex Cent. L-Nut 3/8-16 Thd.
41	16925		Transaxle Mtg. Bracket	100	710-3008		Hex Bolt 5/16-18 x .75" Lg. (Gr. 5)
42	710-0176		Hex Bolt 5/16-18 x 2.75" Lg.*	102	13833		Parking Brake Mtg. Brkt.
43	738-0347		Shld. Spacer .625" I.D.	103	736-0105		Bell-Wash. .380" I.D. x .88" O.D.
44	16926A	N	Clutch Idler Bracket	104	14076A		Idler Brkt. Deck Ass'y.
45	710-0344		Hex Bolt 3/8-16 x 1.5" Lg.	106	756-0293A		V-Belt Idler
46	736-0169		L-Wash. 3/8" I.D.*	107	710-0459		Hex Bolt 3/8-24 x 1.5" Lg.
47	712-0922		Hex Jam Nut 1/2-20 Thd.	110	738-0129		Shld. Bolt .498" Dia. x 2.05"
48	16931		Speed Control Rod Torque Brkt.	111	732-0180		Ext. Spring 4.0" Lg.
49	732-0609		Ext. Spring 2.5" Lg.	112	710-0726		Hex Wash. AB-Tap Scr. 5/16 x .75" Lg.
50	712-0123		Hex Nut 5/16-24 Thd.	113	714-0147		Hitch Pin Clip
51	712-0711		Hex Jam Nut 3/8-24 Thd.	114	738-0482		Hitch Rod
				118	736-0171		L-Wash. 7/16" I.D.*
				119	710-1049		Hex Bolt 7/16-20 x 3.75" Lg.

# 130824H



# 130824H

## PARTS LIST FOR MODEL 130824H LAWN TRACTOR

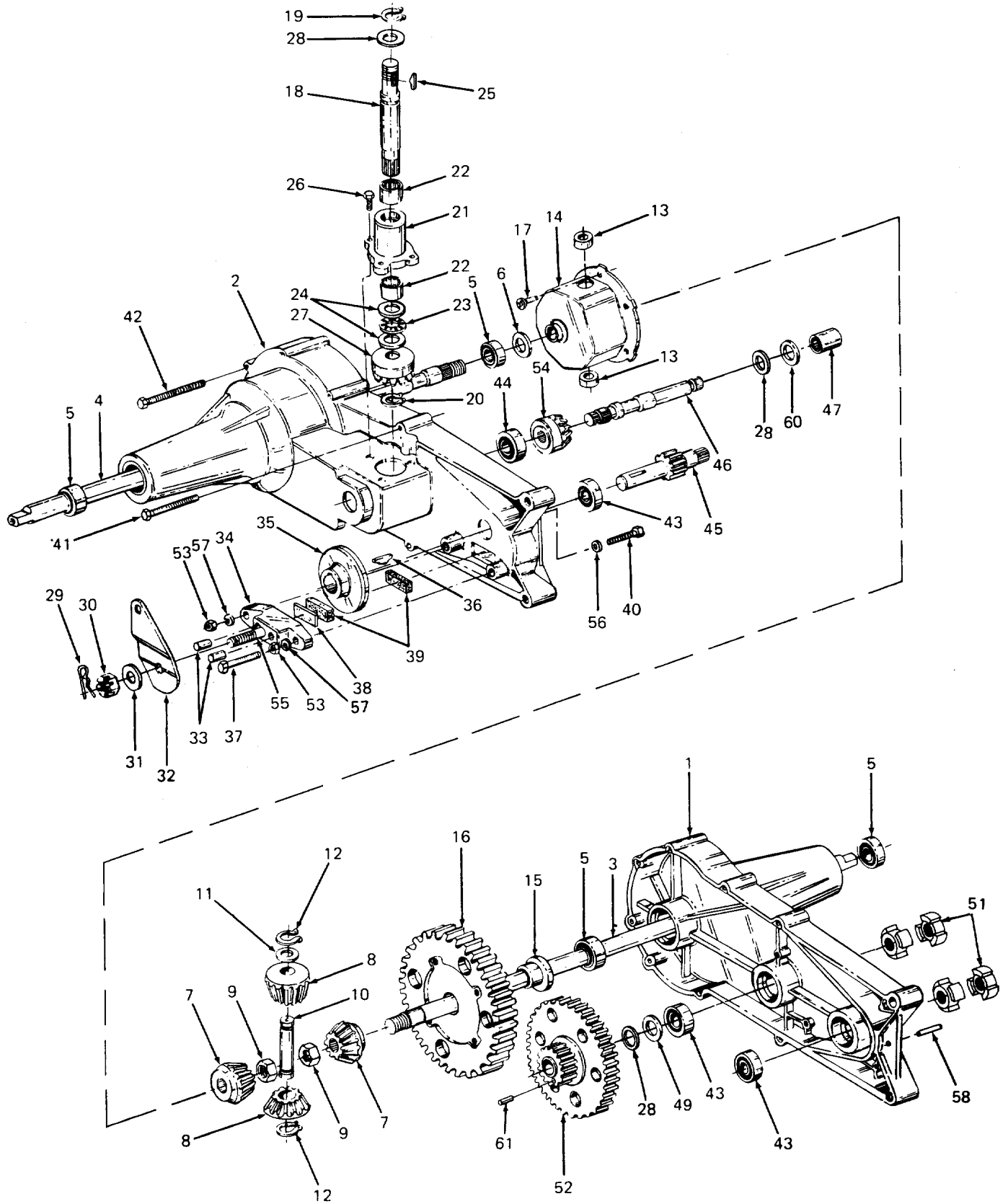
REF. NO.	PART NO.	CODE	DESCRIPTION	REF. NO.	PART NO.	CODE	DESCRIPTION
1	720-0233		Grip	38	736-0119		L-Wash. 5/16" I.D.*
2	17282		Lift Handle Ass'y.	39	712-0181		Hex Top L-Nut 3/8-16 Thd.
3	710-0442		Hex Bolt 5/16-18 x 1.5" Lg.*	40	732-0369		Compression Spring
4	748-0274A		Lift Shaft Drive	41	738-0777		Deck Connecting Rod
5	741-0225		Plastic Hex Brg. 5/8" I.D.	42	712-0287		Hex Nut 1/4-20 Thd.*
6	14231		Index Brkt. Deck Lift	43	14170		Index Brkt. Reinforcement Plate
7	737-0164		Pipe Nipple 3/8-18 Npt.				Muffler
8	737-0143		Pipe Cap 3/8-18 Npt.	44	751-0474		Heat Shield
9	714-0118		Sq. Key 1/4" x 1/4" x 1.50" Lg.	45	17319		Mounting Clamp
10	736-0188		Fl-Wash. .76" I.D. x 1.49" O.D.	46	726-0273		Hubcap
11	736-0171		L-Wash. 7/16" I.D.*	47	734-1614	N	Hex Wash. Hd. TT-Tap Scr. 1/4-20 x .5" Lg.
12	710-1049		Hex Bolt 7/16-20 x 3.75" Lg.	48	710-0599		Bell-Wash. .39" I.D.
13	731-1086		Sleeve .75" I.D. x 1.0" O.D.				Cotter Pin .09 Dia. x 1.0" Lg.
14	13889		Lift Shaft Ass'y.	49	736-0242		Int. Cotter Pin
15	13895		Lift Pivot Brkt. Ass'y.	50	714-0111		Flat Wash. .34" I.D. x 1.12" O.D. x .125"
16	17303		Adj. Deck Lift Link	51	714-0149B		Hex Wash. Hd. AB-Tap Scr. 5/16-24 x .5" Lg.
17	736-0192		Fl-Wash. 1/2" I.D. x 1.00" O.D. x .090"	52	736-0231		Hex Nut 1/2-13 Thd.
18	714-0101		Hairpin Cotter	53	710-0600		Deck Link
19	741-0295		Nyliner 5/8" I.D. x .88" Lg.	54	712-0206		Fl-Wash. .344" I.D.
20	738-0445		Shld. Bolt 5/8" Dia. x .96" Lg. 3/8-16	55	14399		Bell-Wash. .4" I.D. x 1.13" O.D.
21	13790		Connecting Link	56	736-0264		Front Heat Shield
22	710-0627		Hex Bolt 5/16-24 x .75" Lg.	57	736-0219		Hex Bolt 5/16-18 x .75" Lg.*
23	738-0785		Shoulder Spacer	59	16934		Hex Nut 5/16-18 Thd.*
24	756-0575		Engine Pulley	60	710-0118		L-Wash. 5/16" I.D. (Special)
25	710-0502A		Hex Wash. Hd. Scr. 3/8-16 x 1.25" Lg.	61	712-0267		L-Wash. 1/4" I.D.*
26	710-0726		Hex Thd. Rolling Scr. 5/16-18 x .75" Lg.	62	736-0170		Trim Strip 10" Lg.
27	738-0435		Running Board Rod	63	736-0329		Fuel Line 50" Lg.
28	726-0272		Clamp	64	731-0511		Hose Clamp
29	734-0255		Air Valve	65	751-0535		Hex AB-Tap Scr. 1/4 x .62" Lg.
30	734-1679	N	Rear Wheel Ass'y. Comp.**	66	726-0205		Fuel Tank Strap
	734-1680	N	Tire Only**	67	710-0776		Gas Tank
31	734-0603A		Rear Wheel Rim Only	68	17424	N	Gas Gauge
32	736-0346		Flat Washer .34" I.D.	69	751-0528A	N	Seat Plate
33	710-0258		Hex Bolt 1/4-20 x .62" Lg.	70	751-0531A	N	Hitch Plate
34	711-0817		Eye Bolt Adj. Link 1/2-13 Thd.	71	16848A		Hitch Rod
36	712-0158		Hex Cent. L-Nut 5/16-18 Thd.	72	17343		Spring Clip
37	710-0237		Hex Bolt 5/16-24 x .62" Lg.*	73	738-0482		Electric Clutch
				75	727-0425		
				76	717-0949		

\*For faster service obtain standard nuts, bolts and washers locally. If these items cannot be obtained locally, order by part number and size as shown on parts list.

\*\*NOTE: If brand of tire is important, order by part number and description (description is printed on the sidewall of tire) [i.e. Armstrong Super Turf, Goodyear Softrac, Carlisle Turf Saver, etc.].

# 130824H

TRANSAXLE 717-0950



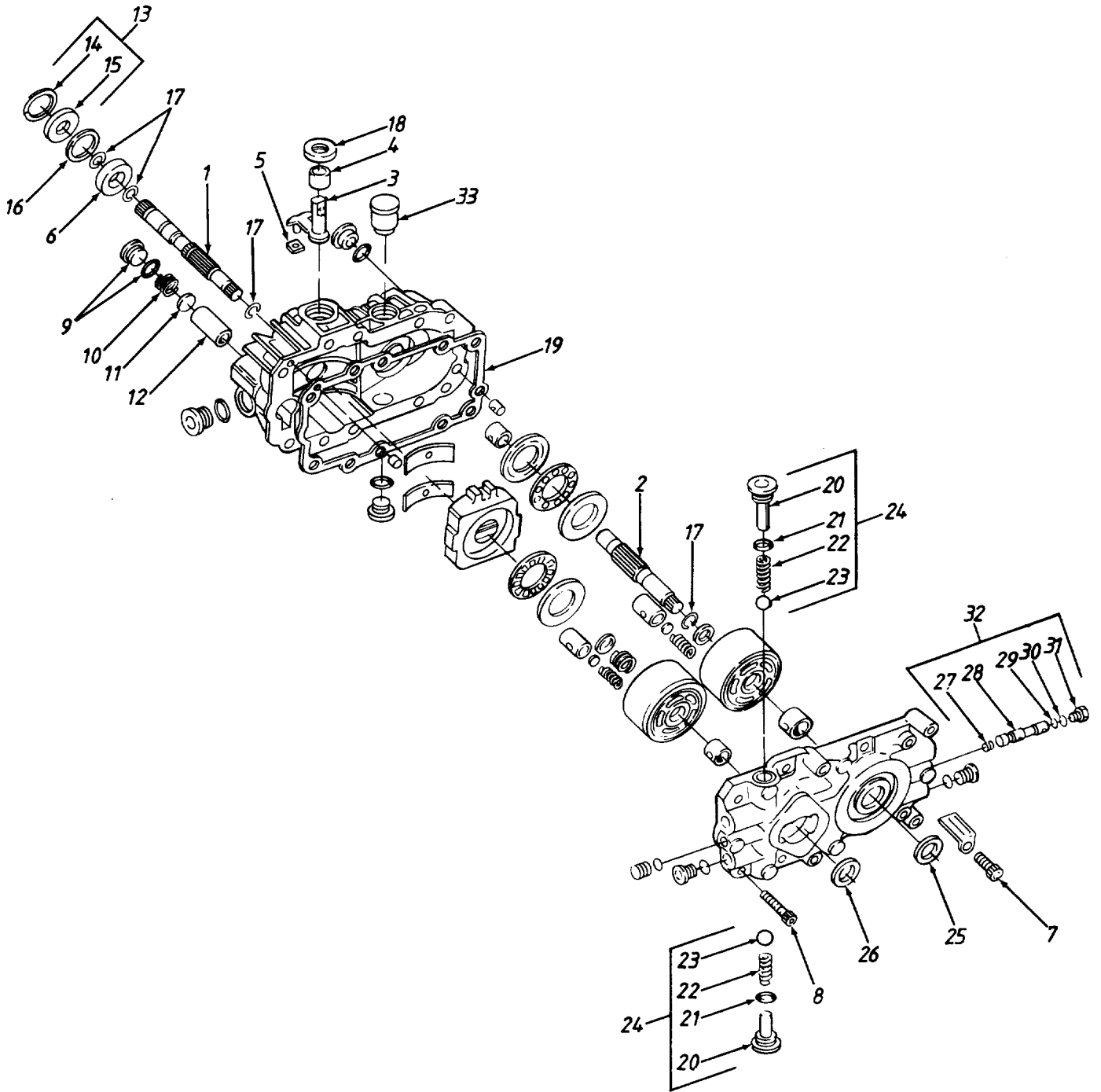
# 130824H

## PARTS LIST FOR TRANSAXLE 717-0950

REF. NO.	PART NO.	DESCRIPTION	QTY.	REF. NO.	PART NO.	DESCRIPTION	QTY.
1	AF-44077	Housing Half, L.H.	1	29	714-0507	Pin, Cotter	1
2	AF-44076	Housing Half, R.H.	1	30	712-0335	Nut, Castle, 5/16-24	1
3	AF-44393	Axle, L.H.	1	31	736-0371	Washer, Flat, .343 x .88 x .062 Thk.	1
4	AF-44392	Axle, R.H.	1	32	AF-44094	Arm, Brake Actuator	1
5	AF-44121	Bearing, Ball	4	33	741-0343	Pin, Actuating, 5/16 Dia.	2
6	AF-44008	Washer, Flat, .76 x 1-1/8" x .306 Thk. Hdn.	1	34	717-0679	Yoke, Brake	1
7	717-1019	Gear, Miter	2	35	717-0677	Disc, Brake	1
8	717-1020	Gear, Miter	2	36	714-0161	Key, Hi-Pro, 3/16 x 5/8 Dia.	1
9	712-0200	Nut, Hex Jam Patch Lock, 1/2-20	2	37	AF-44276	Screw, Hex Patch Lock, 1/4-20 x 1.5 Lg.	1
10	717-0673	Shaft, Cross	1	38	717-0682	Plate, Puck	1
11	736-0369	Washer, Flat, .505 I.D. x 1.0	1	39	717-0678	Puck, Brake	2
12	716-0142	Ring, Snap	2	40	AF-44277	Screw, Hex Cap, 1/4-20 x 1.5 Lg.	1
13	717-0690	Bearing, Thrust	2	41	AF-44123	Screw, Hex Self-Tap, 1/4-20 x 2.0 Lg.	2
14	717-0777	Housing Ass'y. Differential	1	42	AF-44124	Screw, Hex Self-Tap, 1/4-20 x 2.75 Lg.	6
15	741-0376	Bearing, Flange, .75 I.D. x .587	1	43	741-0155	Bearing, Ball	3
16	717-0759	Gear, Differential, 72 Tooth	1	44	741-0361	Bearing, Ball	1
17	710-0862	Screw, Pan Hd. Patch Lock 1/4-20 x .50 Lg.	4	45	AF-44083	Shaft, Pinion w/11 Tooth Gear	1
18	AF-44270	Shaft, Input	1	46	AF-44080	Shaft, Drive	1
19	716-0115	Ring, Snap	1	47	AF-44342	Bearing, Needle	1
20	716-0108	Ring, Retaining, Ext. 7/16 Dia.	1	49	AF-44110	Washer, Flat, 5/8 x 1.12 x .060 Thk.	1
21	AF-44081	Bearing, Input Housing	1	51	AF-44084	Coupling	4
22	741-0335	Bearing, Needle, 5/8 I.D. x .50 Lg.	2	52	AF-44082	Gear, Tooth 60 & 17	1
23	AF-44139	Bearing, Thrust	1	53	712-0298	Nut, Hex Jam, 1/4-20	1
24	AF-44109	Washer, Flat, 5/8 I.D. x 1.12 O.D. x .030 Thk.	2	54	AF-44079	Gear, Drive Pinion, 17 Tooth	1
25	714-0129	Key #4 Hi-Pro, 3/32 x 5/8 Dia. (Hdn.)	1	55	717-0796	Bolt, Square Hd. 5/16-24	1
26	AF-44122	Screw, Hex Patch Lock, 1/4-20 x 3/4 Lg.	3	56	736-0176	Washer, Flat, .265 x .938 x .12 Thk.	1
27	AF-44078	Gear, Input Pinion, 17 Tooth	1	57	736-0329	Washer, Lock, 1/4	1
28	736-0336	Washer, Flat, .62 I.D. x 1.0 O.D. x .030 Thk.	2	58	AF-44269	Pin, Roll, 3/16 Dia. x .50 Lg.	1
	736-0349	Washer, Flat, .62 I.D. x 1.0 O.D. x .020 Thk.	AR	60	AF-44343	Bronze Thrust Brg. 5/8" I.D.	1
	736-0337	Washer, Flat, .62 I.D. x 1.0 O.D. x .040 Thk.	AR	61	AF-44346	Dowel Pin 3/32" x 1/4"	1
				—	737-3047	Grease, Transmission	16 oz.

# 130824H

## HYDROSTATIC TRANSMISSION 717-0940



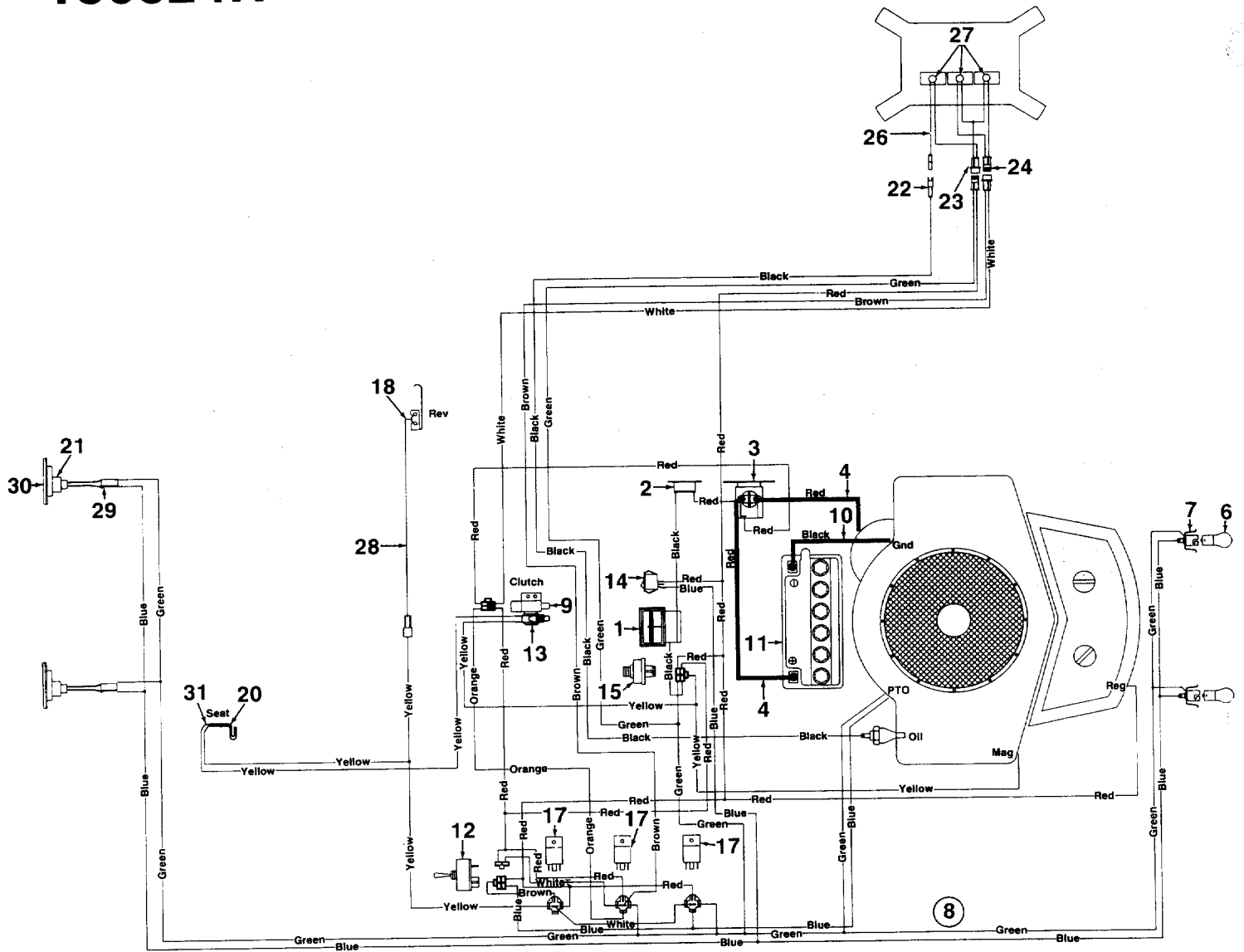


# 130824H

## PARTS LIST FOR HYDROSTATIC TRANSMISSION 717-0940

REF. NO.	PART NO.	DESCRIPTION	QTY.	REF. NO.	PART NO.	DESCRIPTION	QTY.
1	SU-J1020650	Shaft—Pump	1	22	SU-J1041195	Spring	2
2	SU-J1020651	Shaft—Motor	1	23	SU-JHKW03	Ball	2
3	SU-J1030744	Arm, Trunnion	1	24	SU-J1742004	Kit, Check Valve (Includes Ref. No. 20, 21, 22 & 23)	2
4	SU-J1041151	Bearing, Journal	1			Seal, Lip	1
5	SU-J1040980	Guide, Slot	1	25	SU-JSP0652	Seal, Lip	1
6	SU-JSP0631	Bearing, Ball	1	26	SU-J1040500	Spring	1
7	SU-JAAM0802001	Screw, Socket Head	4	27	SU-J1041178	Spool, Bypass	1
8	SU-JAAM0803501	Screw, Socket Head	4	28	SU-J1041152	O-Ring	1
9	SU-90051108700	Plug	1	29	SU-JKP1A003	O-Ring	1
10	SU-J1041159	Spring, Filter	1	30	SU-90042012500	Plug	1
11	SU-J1041158	Washer, Filter	1	31	SU-J1041153	Kit, Bypass Valve (Includes Ref. No. 27, 28, 29, 30 & 31)	1
12	SU-J1041157	Filter	1	32	SU-1742006	Kit, Overhaul Seal [Includes Ref. No. 14, 15, 16, 17 (Qty. 4), 18, 19, 21 (Qty. 2), 25, 26, 29 & 30]	1
13	SU-J1742003	Kit, Seal (Includes Ref. No. 14 & 15)	1			Reservoir	1
14	SU-JFBE0351	Ring, Retaining	1				
15	SU-JSP0632	Seal, Lip	1		SU-J1742008		
16	SU-J1040972	Spacer	1				
17	SU-J1040970	Ring, Retaining	4				
18	SU-JSP0633	Seal, Lip	1				
19	SU-J1020647	Gasket	1				
20	SU-J1041007	Plug	2	33	SU-J1742009		
21	SU-90042013700	O-Ring	2				

# 130824H



## PARTS LIST FOR ELECTRICAL SYSTEM

REF. NO.	PART NO.	CODE	DESCRIPTION	REF. NO.	PART NO.	CODE	DESCRIPTION
1	725-0925		Ammeter	18	725-0759		Spring Lever
2	725-1382		Circuit Breaker	20	725-1303		Safety Switch (Seat)
3	725-1426	N	Solenoid	21	725-3018		Taillight
4	725-0561		Wire	22	729-0139		Connector
6	725-0963		Bulb	23	729-0166		Connector
7	725-1058A	N	Socket	24	729-0132		Connector
8	725-1483	N	Wire Harness	26	725-1364		Wire Harness
9	725-3169	N	Safety Switch (Clutch)	27	725-1365		Bulb
10	725-0996		6 Ga. Black Wire	28	725-1399		Transmission Ext. Wire
11	725-1430	N	Battery (275 Cold Crank Amps)	29	725-1380		Taillight Harness
12	725-0893	N	Switch (PTO)	30	725-3020		Bulb
13	725-0379		Safety Switch (Clutch)	31	725-1439	N	Safety Switch (Seat)
14	725-0634		Light Switch	32	725-1440	N	Clutch Switch Mtg. Brkt. (Not Shown)
15	725-0267		Ignition Switch				
17	725-1375		Relay				



# YARD-MAN PARTS INFORMATION

## POWER EQUIPMENT PARTS AND SERVICE

Parts and service for all YARD-MAN manufactured power equipment are available through local Authorized Service Dealers. Check the yellow pages. All orders should specify the model number of your unit, part numbers, description of parts and the quantity of each part required. DO NOT SEND PARTS ORDERS TO FACTORY. Service Distributors listed below, identified by state abbreviation, may be contacted for service assistance.

NC ALLISON-ERWIN CO.  
SC 2920 N. Tryon Street  
P.O. Box 32308  
Charlotte, NC 28232  
(704) 334-8621

C-CA ALL SEASON EQUIPMENT  
169 S. Hewes Street  
Orange, CA 92669  
(714) 639-7272

S-CA BILLIOUS  
75 N "D" Street  
Porterville, CA 93257  
(209) 784-4102

N-CA BLISS POWER LAWN  
NV EQUIPMENT  
101 Commerce Circle  
Sacramento, CA 95815  
(916) 925-6936

ME M. L. COFFIN CO.  
NH 725 Broadway  
VT Bangor, ME 04401  
(207) 942-8289

MS DICKERSON DISTRIBUTORS,  
AL INC.  
N-GA P.O. Drawer 231  
127 N. W. Depot  
Durant, MS 39063  
(601) 653-3004

S-FL FLORIDA TURF & GARDEN  
EQUIPMENT  
7275 NW 64th St.  
Miami, FL 33166  
(305) 592-3846

UP-NY GAMBLE DISTRIBUTING INC.  
P.O. Box 389  
West End Ave.  
Carthage, NY 13619  
(315) 493-2270

MI IDEAL MOWER SALES  
811 Woodward Heights  
Ferndale, MI 48220  
(313) 541-4660

C-FL MANLEY TRACTOR SALES  
5909 E. Broadway  
Tampa, FL 33619  
(813) 626-5900

IN McDONOUGH & ASSOCIATES  
8535 E. 30th St.  
P.O. Box 1915  
Indianapolis, IN 46219  
(317) 898-4200

WI MERCOR CORP.  
4080 N. Pt. Washington Rd.  
P.O. Box 12145  
Milwaukee, WI 53212  
(414) 961-3200

NJ DE NIEMEYER CORP.  
NY MD 1135 Phoenixville Pike  
PA P.O. Box 1477  
WA-DC West Chester, PA 19380  
(215) 431-7200

MN NORTHSTAR OUTDOOR  
IA EQUIPMENT CORP.  
ND Hwy. 25 & 18, P.O. Box 764  
SD Brainerd, MN 56401  
(218) 829-4271

MO OZARK EQUIPMENT CO.  
E-KS Hwy. 63 & Black Street  
Rolla, MO 65401  
(314) 364-2180

IL PLANTE'S LAWN & GARDEN  
4 Grant St.  
N. Aurora, IL 60542  
(312) 892-2220

## BRIGGS & STRATTON, TECUMSEH AND PEERLESS PARTS AND SERVICE

Briggs & Stratton, Tecumseh and Peerless parts and service should be handled by your nearest authorized engine service firm. Check the yellow pages of your telephone directory under the listing **Engine—Gasoline**, Briggs & Stratton or Tecumseh Lauson.

N-FL POWER EQUIP. DIST. INC.  
S-GA 565 S. Edgewood Ave.  
S-AL Jacksonville, FL 32205  
(904) 387-1512

UT MT POWERED PRODUCTS  
WY S-ID 1661 N. Beck St.  
Salt Lake City, UT 84116  
(801) 359-9767

OH RAHRIG SALES INC.  
108-110 W. Lima St.  
Forest, OH 45843  
(419) 273-2556

KY RASCHE CYCLE CO.  
TN 713 Kentucky Ave.  
Paducah, KY 42001  
(502) 443-8142

C-FL SPAULDINGS INC  
P.O. Box 10009  
1921 5th Ave S.  
St. Petersburg, FL 33712  
(813) 896-2611

CO SPITZER INDUSTRIAL PRODUCTS  
6601 N. Washington Street  
Denver, CO 80229  
(303) 287-3414

AR TIMBERLAND SAW CO.  
LA Hwy. 31 South  
OK P.O. Box 1227  
TX Marshall, TX 75671  
(214) 935-5251

CANADA MTD PRODUCTS CANADA  
97 Kent Ave.  
Kitchener, Ontario  
Canada, N2G 4J1  
(519) 579-5500

EXPORT DRAKE AMERICA CORP.  
#2 Gannett Drive  
White Plains, NY 10604  
(914) 697-9800

### WARRANTY PARTS AND SERVICE POLICY

(0889)

The purpose of warranty is to protect the customer from defects in workmanship and materials, defects which are NOT detected at the time of manufacture. It does not provide for the unlimited and unrestricted replacement of parts. Use and maintenance are the responsibility of the customer. The manufacturer cannot assume responsibility for conditions over which it has no control. Simply put, if it's the manufacturer's fault, it's the manufacturer's responsibility; if it's the customer's fault, it's the customer's responsibility.

#### CLAIMS AGAINST THE MANUFACTURER'S WARRANTY INCLUDES:

1. Replacement of Missing Parts on new equipment.
2. Replacement of Defective Parts within the warranty period.
3. Repair of Defects within the warranty period.

All claims MUST be substantiated with the following information:

1. Model Number, Serial Number and/or Date Code of unit involved.
2. Date unit was purchased or first put into service.
3. Date of failure—Date Repaired.
4. Nature of failure—Correction.