



Institutional Television
www.itv.philips.com

PRELIMINARY



Directions For Use

**20" LCD Monitor with iFace™
and Philips ITV SmartPort**
for health care applications



Pillow speaker /
pendant control
interface

Pillow speaker /
pendant control
(not included)

(rear view of unit)



Philips SmartPlug™

Let's make things better.



PHILIPS

1. Read these instructions.
2. Keep these instructions.
3. Heed all warnings.
4. Follow all instructions.
5. Do not use this apparatus near water.
6. Clean only with a dry cloth.
7. Do not block any of the ventilation openings. Install in accordance with the manufacturers instructions.
8. Do not install near any heat sources such as radiators, heat registers, stoves, or other apparatus (including amplifiers) that produce heat.
9. Do not defeat the safety purpose of the polarized or grounding type plug. A polarized plug has two blades with one wider than the other. A grounding type plug has two blades and third grounding prong. The wide blade or third prong are provided for your safety. When the provided plug does not fit into your outlet, consult an electrician for replacement of the obsolete outlet.
10. Protect the power cord from being walked on or pinched particularly at plugs, convenience receptacles, and the point where they exit from the apparatus.
11. Only use attachments/accessories specified by the manufacturer.
 - Use only with a cart, stand, tripod, bracket, or table specified by the manufacturer, or sold with the apparatus. When a cart is used, use caution when moving the cart/apparatus combination to avoid injury from tip-over.
13. Unplug this apparatus during lightning storms or when unused for long periods of time.
14. Refer all servicing to qualified service personnel. Servicing is required when the apparatus has been damaged in any way, such as power-supply cord or plug is damaged, liquid has been spilled or objects have fallen into apparatus, the apparatus has been exposed to rain or moisture, does not operate normally, or has been dropped.
15. This product may contain lead and mercury. Disposal of these materials may be regulated due to environmental considerations. For disposal or recycling information, please contact your local authorities or the Electronic Industries Alliance: www.eiae.org
16. Damage Requiring Service - The appliance should be serviced by qualified service personnel when:
 - A. The power supply cord or the plug has been damaged; or
 - B. Objects have fallen, or liquid has been spilled into the appliance;

Glossary

A/V	Audio / video.
CVBS	Composite Video Blanking Sync. Also known as "composite" or "AUX" video. In this method of video connection, the color, luminance and synchronization signals are combined on one wire.
DCM	Data Communications Module. General term for devices that communicate with Philips Institutional Television products by means of the Philips ITV SmartPort.
DFU	Directions For Use. User documentation. Also (formerly) known as "IB", "Instruction Booklet".
Display Monitor	In this documentation, the non-Iconnized television display monitor itself.
FTV	Flat television (plasma or LCD television display monitor).
hciFace, hiFace®	Hospital version(s) of iFace.
H-M Link®	Hotel-mode link. Control interface based on a subset of Philips SmartPort, for hospitality in-room television applications.
iFace®	Infra-red interface. Internally-installed ITV intelligent interface module that adds Philips SmartPort connectivity to display products that do not have built-in SmartPort.
irFace®	Alternate name for iFace.
IR	Infra-red, long-wavelength optical energy invisible to the human eye. In this document, denotes wireless remote controls. In some contexts, can also refer to wired (non-optical) un-modulated TTL RC signals.
ITV	Institutional Television. Commercial / non-consumer business unit of Philips Consumer Electronics Co., a division of Koninklijke Philips Electronics N.V., its products, and its intellectual property.
Jack	A receptacle connector that typically resides on a panel built into an electrical or electronic device.
LCD	Liquid-crystal display. An image-display technology that achieves a thin panel form factor and low power consumption.
NA, N/A	Not available, not applicable.
NC, N/C	Not connected, no connection.
Off	See "Standby".
On	A state of operation in which the unit (television) is connected to an AC power source, in active use, and capable of responding to queries or commands from a control device (IR remote control) and/or DCM.
OSD	On-Screen Display. Text characters that are generated by the display monitor's or set-top box's character generator. Used to display menus, status, closed-captioning, channel, etc.
Plug	Connector, usually on a cable, that connects to a socket receptacle connector.
RC	Remote control. Also see <i>IR</i> .
RC-5, RC-6	Philips IR remote control communication protocols.
RJ-11 / RJ-12	Registered Jack 11 / 12. Modular telephone-style connector with 4 / 6 electrical conductors.
SmartPort®	Philips ITV proprietary three-wire synchronous serial communications and control interface. AKA SmartPlug.
Socket	Receptacle connector on a cable or jack panel that connects to a plug.
Standby	Typically referred to as "off". A state of operation, characterized by relatively low power consumption, in which the unit (television) is connected to an AC power source, but not in active use, and capable of responding to queries or commands from a local keypad (if enabled), a control device and/or a DCM.
S-Video	Super-Video, sometimes referred to as Y/C Video, is a video signal connection method in which the luminance (Y) signal and chrominance (C) signal are conveyed on separate signal paths in order to achieve picture quality that is significantly improved over CVBS (see CVBS).
TTL	Transistor-Transistor Logic, a common semiconductor technology. Also denotes the signal voltages corresponding to digital information ("0" or "1"), such as that in wired remote-control commands.
YPbPr	Component video, a video signal connection method in which the luminance (Y) signal, the Pb (blue), and Pr (red) signals are conveyed on separate signal paths. Sync and green signal components are present on Y.

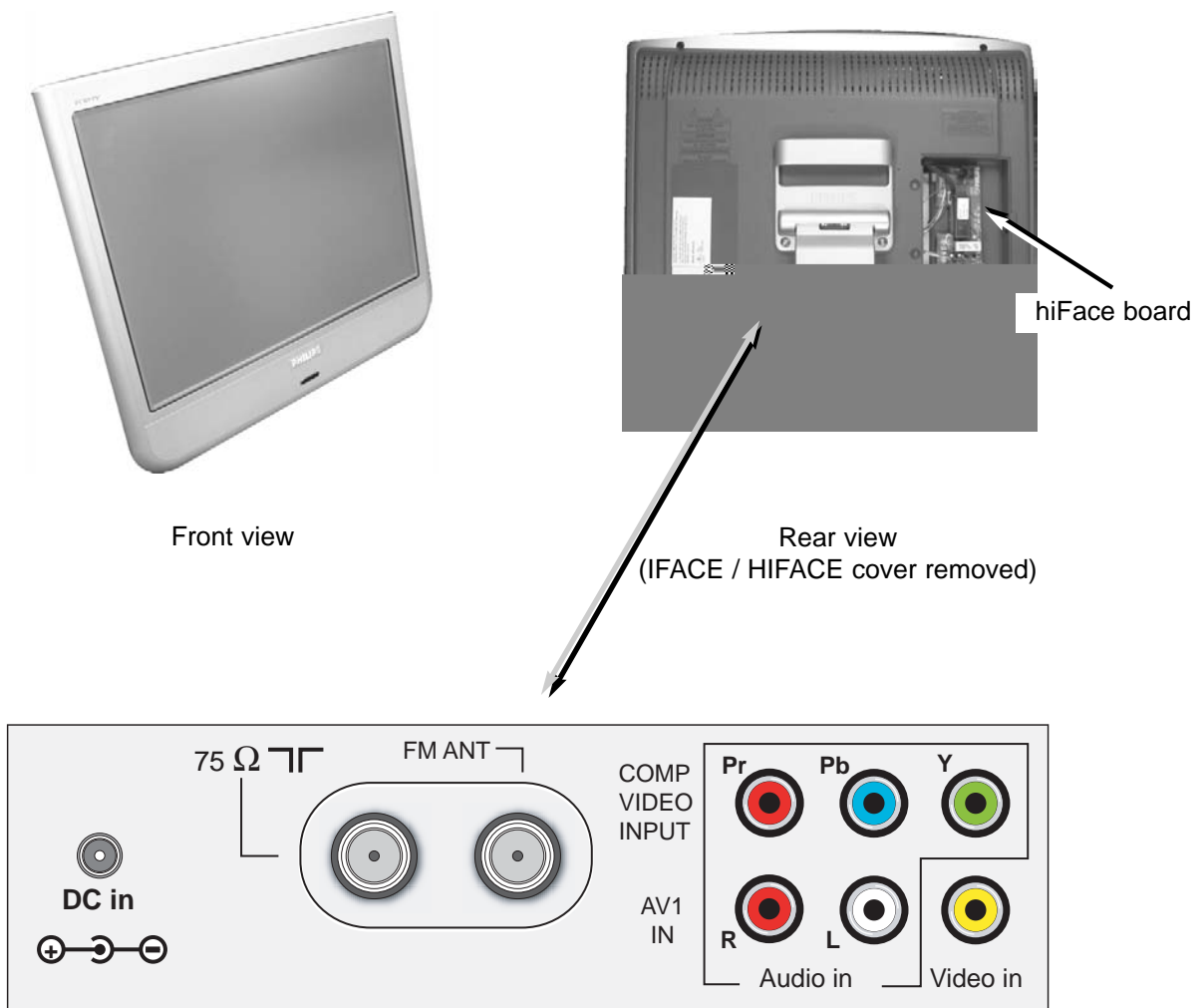
Product Description

The 20FT3010/37 is a specialized television product configuration consisting of a Philips 20" LCD television / monitor (20PF7835) equipped with an intelligent interface board (iFace™) that adds Philips ITV SmartPort™ compatibility. hiFace makes it possible to offer a cost-effective LCD television display solution for use with Philips ITV-compatible SmartPort™ data communication modules (DCM) for hospitality / pay-per-view, health-care, audio/visual, and other non-consumer applications.

Important Product Application and Warranty Information

The 20FT3010/37 is neither marketed, sold, nor intended for consumer applications. The 20FT3010/37 is neither marketed, sold, nor intended to be considered, neither expressly or by implication, as capable of being converted or re-configured for consumer applications. The warranty does not apply to, and is void for, units that have been altered, converted, re-configured, or modified in any way without prior written authorization from Philips Institutional Television.

20FT3010/37



LCD monitor A/V jack panel

Product Accessories

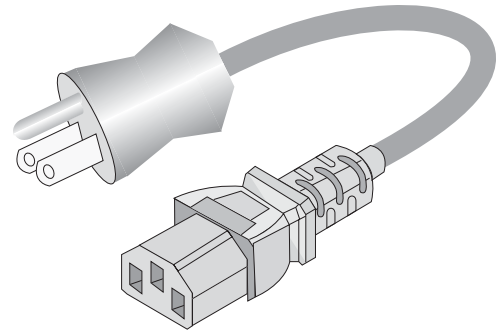
Included Accessories

The 20FT3010/37 includes the following accessories:



Power adapter

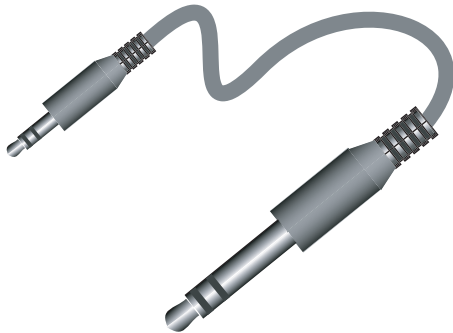
Input: 100-240 VAC, 50/60 Hz; IEC connector
 Output: 24 VDC @ 5A, coaxial plug
 Agencies: UL, CE, NOM



Power adapter cable

AC mains, 6 ft

Hospital grade 3-prong plug, IEC socket
 Certification(s): CSA33169CLASS584103
 CSA33169CLASS584202
 ULE55349SPV1

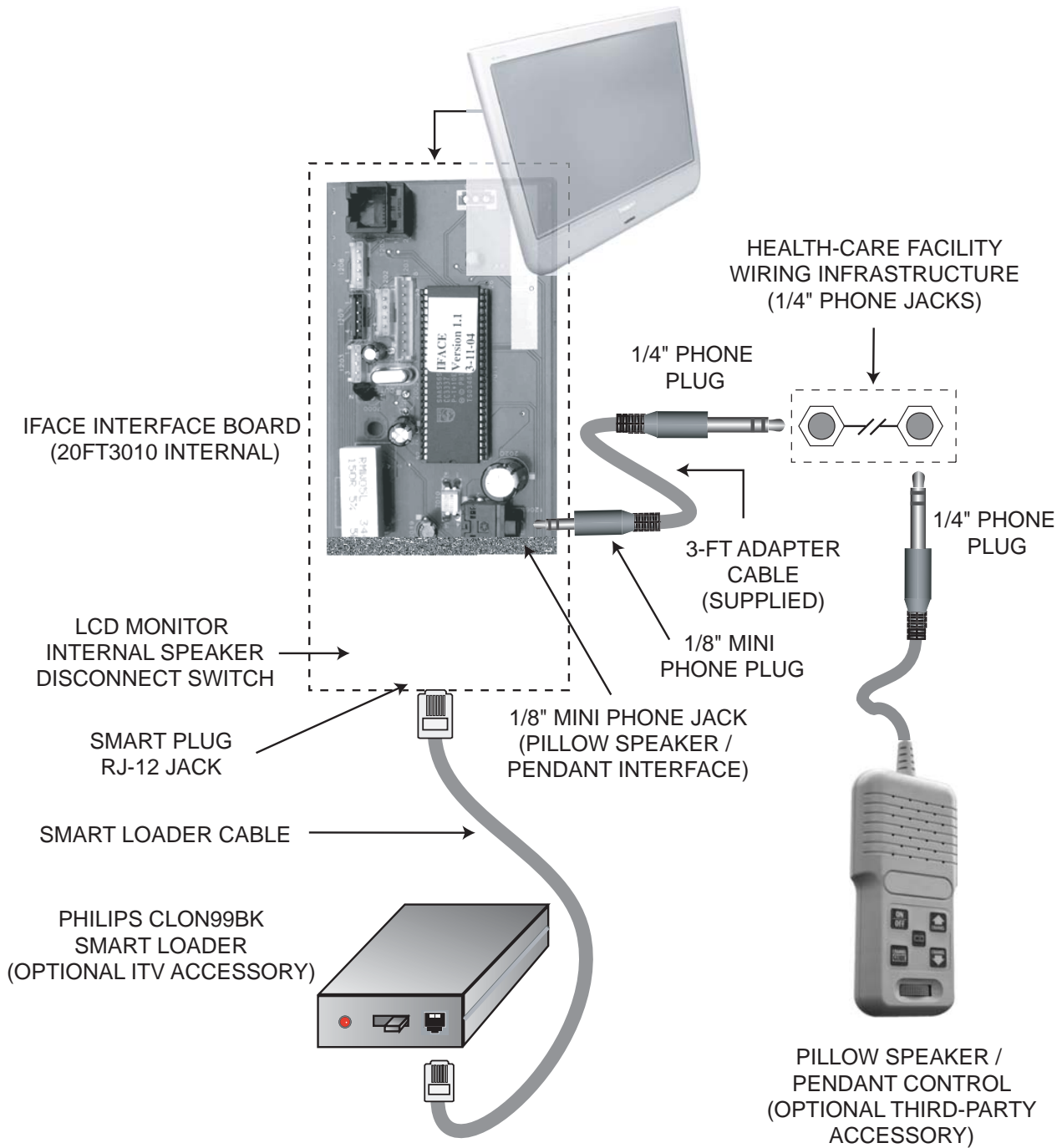


Pillow Speaker / Pendant Extension Cable

1/8" mini stereo phone plug to 1/4" stereo phone plug, 3-ft, 3-conductor cable (adapts IFACE / HIFACE 1/8" mini stereo phone jack to pillow speaker)

20FT3010/37 iFace / hiFace Connection Information

The following diagram illustrates the connections to the iFace / hiFace module.



Philips ITV General Information

Philips Institutional TV Software

Typical Philips Institutional Televisions can be configured to operate in either "Consumer" or "Commercial" operational modes. However, the 20FT3010/37 hiFace-based ITV product is primarily intended to operate in the Commercial mode. Consumer-mode operation is not intended for the 20FT3010/37, because it is based on a consumer product (20PF7835) that is adapted for commercial use by means of the hiFace module.

Commercial Mode

The configuration of Commercial mode features requires a Philips ITV master setup remote (RG4172BK or RC2573GR, optional accessory). When the television is in Commercial mode, access to its operation from its keyboard or from a guest-mode remote can be restricted, depending upon the settings of the Institutional TV features. For examples, the unit's keyboard controls can be "locked-out" (rendered inoperable), only certain channels can be selected, and the volume can be limited to a given range.



RG4172BK



RC2573GR

Philips ITV master setup remotes

Identifying the Operational Mode: To identify the television's operational mode, a system 7 (commercial setup mode) master setup remote must be used. With the setup remote *in setup mode* (RG4172BK: press TV SETUP, or RC2573: place switch in SETUP position), press **Recall**. The following information will appear on-screen, depending upon the version of iFace / HcIface.

NOTE: There are currently two versions of the 20FT3010/37. The respective versions are as indicated in the last line of the respective SYSTEM STATUS.

SYSTEM STATUS

MODE	COMMERCIAL	MODE	COMMERCIAL
CHANNEL	TV 12 (ANTENNA)	CHANNEL	AV2 (AV2)
DCM	OFF	DCM	OFF
CODES	96 1 98 48 8 0 200 32 32 34	CODES	44 0 34 48 8 0 200 32 32 32
SIGNAL	TUNED	OP HRS	000Bh
OP HRS	000Bh	HCIFACE	0.07 / 1.00
IFACE	1.01		

IFACE 1.01

HCIFACE 0.07 / 1.00

Philips ITV Setup Menu

You can access the Philips ITV TV Setup Menu using the “M” key on a Philips ITV master setup remote control that is in setup mode. The following setup menus are available on the 20FT3010/37. Please note that these menus are generated by hiFace / iFace module, not by the LCD television monitor. The factory default settings are shown. For detailed descriptions of the setup menu items, please refer to the section **hiFACE / ITV SETUP MENU ITEM DESCRIPTIONS**.

NOTE: There are currently two versions of the 20FT3010/37, depending upon the version of the resident HCIFACE / IFACE module. The menus of the respective versions differ as indicated below. The versions are distinguishable as described in the earlier section **IDENTIFYING THE OPERATIONAL MODE**. Functional differences in the setup menu are noted in the section entitled **IFACE* / HIFACE* ITV SETUP MENU ITEM DESCRIPTIONS**.

TV SETUP MENU

MENU ITEM	IFACE 1.01	HCIFace 0.07 / 1.00	SETTINGS / OPTIONS	DEFAULT SETTING
LANGUAGE	✓	✓	ENGLISH / ESPANOL / FRANÇAIS	ENGLISH
CHANNEL INSTALL	✓	✓	>	CHANNEL INSTALL
CURRENT RING	✓	✓	>	CHANNELS 2 -13
SWITCH ON CHANNEL	✓	✓	STANDARD / AV1 / AV1YC / AV2 / AV2YC / CVI / TV 1-125	STANDARD
POWER ON	✓	✓	STANDARD / FORCED	STANDARD
CHANNEL DISPLAY	✓	✗	NUMBER / LABEL / ALL / NONE	ALL
KEYBOARD LOCK	✓	✓	ON / OFF	OFF
ESP	✓	✓	1-99 / OFF	OFF
WELCOME MESSAGE	✓	✗	>	OFF
CHANNEL GUIDE	✓	✓	POWER ON / OFF / ON	OFF
REMINDER	✓	✗	ON / OFF	OFF
3 DIGIT ENTRY	✓	✓	ON / OFF	OFF
A/CH A/V SWITCH	✓	✗	ON / OFF	OFF
AV LOCK	✗	✓	ON / OFF	OFF
IFACE CONTROL	✓	✗	ON / OFF	ON
SECURITY	✓	✓	STANDARD / HIGH	STANDARD
EXIT			>	

20FT3010/37 setup menu

Note: *AV1YC / AV2 / AV2YC* appear in the menu, but are not applicable to the 20FT3010/37

* HIFACE: SERIAL NUMBER DK1A
IFACE: SERIAL NUMBER DK1B

IFACE / HIFACE ITV Setup Menu Item Descriptions**LANGUAGE**SETUP x CONSUMER x FEATURES MENU _

An on-screen LANGUAGE option is available. You can set the TV's on-screen menu to appear in English, French, or Spanish text. With the Main Menu on-screen, press the Menu button repeatedly, or use the Cursor Up and Down buttons, to select LANGUAGE with the TV's highlight control bar. Press Cursor Right (+>) or Left (<-) on the remote to select English, French (FRANCAIS), or Spanish (ESPANOL). Text in the on-screen Menu will appear in the selected language.

CHANNEL INSTALLSETUP x CONSUMER x FEATURES MENU _

When CHANNEL INSTALL is highlighted, use Channel Up/Down, or enter the desired channel number using the Number buttons you wish to edit. The following control items, contained within the Channel Installation menu, will affect the chosen channel.

CHANNEL - When CHANNEL is selected, use Channel Up/Down, or enter the desired channel number using the Number buttons.

	CHANNEL INSTALLATION
CHANNEL	AV1 / AV1YC / AV2 / AV2YC / CVI / TV 1-125
CHANNEL RING 1	SAVED / DELETED
CHANNEL RING 2	SAVED / DELETED
CHANNEL RING 3	SAVED / DELETED
CHANNEL RING 4	SAVED / DELETED
INPUT	AV1 / AV1YC / AV2 / AV2YC / CVI / TV 1-125
LABEL	(-----)
AUTO PROGRAM*	>
EXIT	>

*NOT AVAILABLE ON HCIFACE 0.07 / HIFACE 1.0

Note: Inputs in *italics* appear in the menu, but are not implemented.

- AV1 refers to the CVBS input on the 20FT3010 jack panel.
- AV1YC, AV2, and AV2YC appear in the menu but are not implemented.
- A "channel" can be either an RF channel (1-125) or a video input (AV1, CVI). RF channels (1 - 125) can select ANTENNA (normal mode), or be re-directed to (i.e. used to select) a video input. In other words, Channel 3 could select AV1, Channel 4 could select CVI, etc. This re-direction is sometimes referred to as **channel mapping**. However, video inputs can select only a video input (AV1 / CVI). Video inputs cannot be mapped to ANTENNA.
- **Note: The screen will blank momentarily, and there will be a short delay, when you step through the CHANNEL and INPUT selections.**

CHANNEL RING 1-4 CHANNEL RING determines the channels or inputs that are accessible by means of the television's keyboard (if it is not locked out) or from a guest-mode remote control. When CHANNEL RING 1, 2, 3, or 4 is highlighted, press the Cursor Right (+>) or Left (<-) buttons on the remote to choose SAVED or DELETED. When SAVED is selected, the channel will remain in, or be added to, the respective channel ring. When DELETED is selected, the channel will be removed from the respective channel ring and will not appear when TV channels are scanned (using the Channel +,- buttons). Each of the four channel rings can be programmed individually, but only one channel ring can be in effect at any given time. The channel ring that is currently in effect is specified in the setup menu CURRENT RING item (see CURRENT RING).

INPUT - When INPUT is highlighted, press the Cursor Right (+>) or Left (<-) buttons on the remote to select ANTENNA, FRONT, AUX, S-VIDEO input signal options. INPUT directs the TV to select the specific indicated input whenever this channel is tuned. *See CHANNEL, above.*

LABEL - When LABEL is highlighted, press the Cursor Right (+>) button on the remote to select the first character space area. Then press the Cursor Up and Down buttons to scroll through the list of available letter characters/numbers/& symbols provided for your labeling use. Press the Cursor Right (+>) button to highlight the next character space and continue to repeat the process until the complete label or channel title has been entered. The Channel Label will appear in the corner of the TV screen beside the selected channel number.

AUTO PROGRAM - When AUTO PROGRAM is highlighted, press the Cursor Right (+>) or Left (<-) buttons to begin an automatic channel search for all available received signal programs. Any channels found will be SAVED in the TV's program memory. **NOTE: The AUTO PROGRAM feature is not available in HCIFACE 0.07 / HIFACE 1.0.**

IFACE / HIFACE ITV Setup Menu Item Descriptions (continued)

CURRENT RING* (1 / 2 / 3 / 4)

SETUP x CONSUMER __ FEATURES MENU _

Determines which of the four channel rings is currently in effect. The current channel ring can also be selected by means of the RESET button on the setup remote (when the setup remote is in setup mode). Also see CHANNEL INSTALL.

SWITCH ON CHANNEL* (STANDARD/AV1/AV1YC/AV2/AV2YC/CVI/TV 1-125) SETUP x CONSUMER __ FEATURES MENU _
Applicable to / available in Commercial Mode / setup menu only. If SWITCH ON CHANNEL is set to STANDARD, the channel to which the television will be adjusted at power-on will be the last channel / input to which it was tuned when the television was last powered off. If SWITCH ON CHANNEL is set to a particular input or channel, that will be the input or channel to which the television will be tuned at power-on. **Note: AV1YC / AV2 / AV2YC are not applicable to the 20FT3010/37.**

POWER ON* (STANDARD / FORCED)

SETUP x CONSUMER __ FEATURES MENU _

Applicable / available only to the Commercial Mode / setup menu. When POWER ON is set to FORCED, the television will automatically power-up whenever it is supplied with mains power. With POWER ON set to FORCED, the television will remain powered on long as mains power is applied, and **cannot be turned off with a guest-mode remote, or with the television's keyboard (even if the keyboard is not locked out)**. When POWER ON is set to STANDARD, the television will remain in standby mode (i.e. off) when AC power is applied or resumed, until the unit is powered on.

CHANNEL DISPLAY* (NUMBER / LABEL / ALL / NONE)

SETUP x CONSUMER __ FEATURES MENU _

Applicable to / available in Commercial Mode / setup menu only. CHANNEL DISPLAY determines the channel information (NUMBER and / or LABEL), if any, that is displayed briefly whenever the channel is changed. Also see LABEL in CHANNEL INSTALLATION. Also see REMINDER.

KEYBOARD LOCK* (OFF / ON)

SETUP x CONSUMER __ FEATURES MENU _

Applicable to / available in Commercial Mode / setup menu only. If KEYBOARD LOCK is set to ON, the television will not respond to commands from its local keyboard (power, channel, volume, etc.). When KEYBOARD LOCK is set to ON, the television responds to commands from its local keyboard (power, channel, volume, etc.)

ESP* (OFF / 1 - 99)

SETUP x CONSUMER __ FEATURES MENU _

Applicable / available only to the Commercial Mode / setup menu. ESP (Energy Savings Programmability), if not OFF, determines the number of hours (1 - 99) the television will remain powered on after the most recent front panel keyboard or remote control command. **NOTE: If POWER ON (see POWER ON STANDARD / FORCED) is set to FORCED, ESP has no effect.**

WELCOME MESSAGE* (>)

SETUP x CONSUMER __ FEATURES MENU _

Applicable / available only to the Commercial Mode / setup menu. The WELCOME MESSAGE feature makes it possible for an on-screen message to appear whenever the television is first turned on. The message will remain until any front-panel keyboard command or remote control command is received. The WELCOME MESSAGE sub-menu is shown below.

WELCOME MESSAGE	
MESSAGE	OFF / ON
LINE 1	(20 CHARACTERS)
LINE 2	(20 CHARACTERS)
CLEAR	>
EXIT	>

Use cursor-up and cursor-down to select the WELCOME MESSAGE sub-menu item. While Line 1 or Line 2 of the WELCOME MESSAGE message is highlighted, use cursor-left and cursor-right to enter and exit message-edit mode and position the cursor within the line of the message content. Use cursor-up and cursor-down to change the character at the current position. Press RECALL on the Setup Remote to exit the editing mode and resume WELCOME MESSAGE sub-menu item selection. **NOTE:** WELCOME MESSAGE, when ON, overrides CHANNEL GUIDE at power-on, if the latter has been enabled.

* COMMERCIAL FEATURE

IFACE / HIFACE ITV Setup Menu Item Descriptions (continued)

CHANNEL GUIDE* (OFF / ON / POWER ON)

SETUP CONSUMER FEATURES MENU

Applicable to / available in only to the Commercial Mode / setup menu. CHANNEL GUIDE provides an on-screen list of all channels / inputs currently saved in the channel ring (see CHANNEL INSTALL) and their corresponding labels (see CHANNEL INSTALL), for any channels / inputs to which labels have been assigned. When CHANNEL GUIDE is ON, the channel guide appears when a remote control CH GDE command is received. When CHANNEL GUIDE is set to POWER ON, the channel guide appears when the television is first powered on, as well as when a remote control CH GDE command is received. When CHANNEL GUIDE is OFF, the channel guide never appears.

REMINDER* (OFF / ON)

SETUP CONSUMER FEATURES MENU

The REMINDER feature, when ON, causes the television to constantly display the currently-tuned channel / input and/or its label (if one has been assigned, see CHANNEL INSTALLATION) in the upper-left-hand corner of the screen. When REMINDER is OFF, the channel number / label will only appear briefly immediately after channel / input is selected. NOTE: The REMINDER feature is available in the television's commercial-mode TV SETUP and CONSUMER menus.

3-DIGIT ENTRY* (OFF / ON)

SETUP CONSUMER FEATURES MENU

Applicable / available only to the Commercial Mode / setup menu. Determines whether two or three remote-control digit commands initiate a channel-tune command. When OFF, tuning will occur upon the reception of two remote-control digit commands. When ON, tuning will occur upon the reception of three remote-control digit commands.

A/CH A/V SWITCH* (OFF / ON)

SETUP CONSUMER FEATURES MENU

Alternate channel Audio / Video switching. Available in / applicable to Commercial Setup Menu / Commercial Mode. When A/CH A/V SWITCH is OFF, the remote-control A / CH (alternate channel) command causes the television to select the channel / input that was selected just prior to the currently-selected one. When A/CH A/V SWITCH is ON, the remote-control A / CH (alternate channel) command causes the television to successively switch between all A/V inputs currently saved in the Channel Ring and the television's most-recently-tuned RF channel.

IFACE CONTROL (OFF / ON)

SETUP CONSUMER FEATURES MENU

Applicable only to IFACE-2-based products, such as the 20FT3010/37 (IFACE 1.01). IFACE CONTROL is normally ON during typical operation in Institutional Television applications. When IFACE CONTROL is ON, the IFACE module intercepts and processes remote-control keystrokes, thus preventing the display monitor from receiving them and processing them directly. When IFACE control is OFF, the IFACE module does not intercept or send IR commands to the display monitor, so that the monitor can be configured. Please refer to the section entitled TECHNICAL INFORMATION: LCD PANEL MENU ACCESS in this documentation.

AV LOCK (OFF / ON)

SETUP CONSUMER FEATURES MENU

Applicable only to HCIFACE-0.07-based products, such as the 20FT3010/37 (HCIFACE 0.07). HCIFACE 0.07 displays its menus using the monitor's AV2 input. If the display monitor were inadvertently switched to a different input / channel, the HCIFACE menu would no longer be visible, and this would make it impossible to perform service configuration changes to the HCIFACE and/or monitor. When AV LOCK is ON, the HCIFACE 0.07 does not send IR commands to the display monitor, so that the monitor can remain tuned to the AV2 video input. For additional information, please refer to the section entitled TECHNICAL INFORMATION: LCD PANEL MENU ACCESS in this documentation.

SECURITY * (STANDARD / HIGH)

SETUP CONSUMER FEATURES MENU

Available in / applicable to Commercial Setup Menu / Commercial Mode. When SECURITY is set to STANDARD, access to the television's Commercial Setup Menu is possible with a guest-mode remote control, by means of the following remote-control keystrokes: **3 1 9 7 5 3 MUTE**.

Note: The SECURITY item itself does not appear when the Commercial Setup Menu is invoked in this manner. **This feature can only be changed with a Master Setup Remote.**

* COMMERCIAL FEATURE

Health-Care Pendant / Pillow Speaker Operation

The Philips 20FT3010/37 Institutional Television product can be used in hospitals and other medical facilities. It is compatible with a type of device known as a “pillow speaker” or “pendant control”. This device contains a built-in speaker for bedside audio, while also providing television power, channel, and volume control functions, all by means of a three-conductor cable. Examples of two such devices are described herein. The following products are manufactured by Curbell Industries (www.curbell.com), Orchard Park, NY.



“Analog” style pillow-speaker control

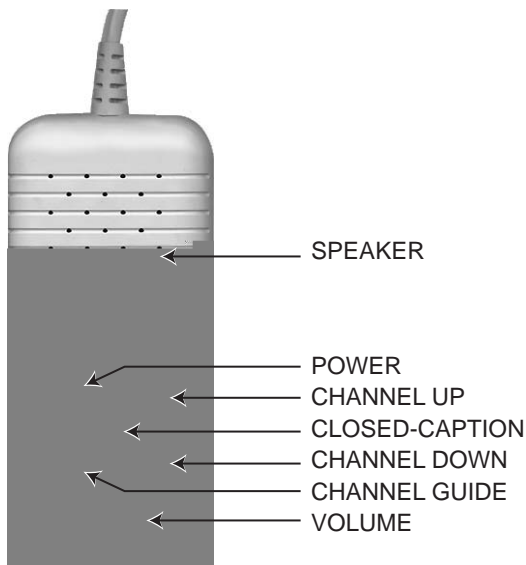
The “analog” version of the pillow speaker, as it is sometimes referred to, provides a built-in speaker, a volume control, and one dual-purpose button that both selects the TV channel, and powers the television on and off.

If the television is in the standby state (power off), a single press of the channel / power button will turn the unit on.

When the television is on, each press of the button increments the currently-tuned channel.

If the television is on, it will power off when the the channel / power button remains depressed for four successive channel increments (the television will power off *after* the fourth channel increment).

NOTE: Analog-style controls tend to exhibit a relatively slow response time to channel commands. This is normal, and is not indicative of a system problem.



“Digital” style pillow-speaker control

One example of a so-called “digital” version of the pillow speaker provides a built-in speaker, a volume control, and dedicated buttons that perform the following functions, as indicated.

- Power on/off
- Channel up
- Channel down
- Closed-caption
- Channel guide

There are three levels of menus that provide access to setup and control of the 20FT3010/37.

1. LCD Main Menu: The lowest menu level is the LCD main menu, which contains the menu items: picture & sound settings, and tuner mode. This menu is normally not accessible and must be reached by the instructions below. Philips iTV recommends that the factory-setup picture and sound settings be kept. Also note that the current volume level is used as the MAX volume when the "hotel mode" is activated.

2. LCD Hotel Mode Menu: The next menu level is the LCD hotel mode menu, which contains the following additional menu items: ON CHANNEL, CHANNEL BLANK, KEYBOARD LOCK, OSD display, and ON VOLUME. Of these settings, only ON VOLUME is usable, since the highest level or hiFace module software will override hotel mode menu items. This menu is normally not accessible and must be reached by the instructions below. ITV recommends that ON VOLUME is the only menu

LCD Panel Menu Access (continued)

4. With iTV setup remote (in guest mode), enter 31-97-53- mute.
5. Cursor down menu. Set HOTEL MODE to OFF.

HOTEL MODE SETUP MENU	
HOTEL MODE	OFF
ON CHANNEL	AV2
CHANNEL BLANK	OFF
KEYBOARD LOCK	OFF
ON VOLUME	50

6. Cursor down to last menu item and store settings.

HOTEL MODE SETUP MENU	
CHANNEL BLANK	OFF
KEYBOARD LOCK	OFF
ON VOLUME	50
OSD DISPLAY	ON
STORE	STORED

7. With iTV setup remote in guest mode, press MENU button. Make desired changes.

> PICTURE	BRIGHTNESS
SOUND	COLOR
FEATURES	PICTURE
INSTALL	SHARPNESS
	TINT

Now follow the steps below to reverse the process to return the unit to HIFACE / IFACE-ready operation.

1. Set volume to desired level for maximum.
2. With iTV setup remote (in guest mode) enter 31-97-53- mute.
3. Set Hotel Mode to ON.
4. Store settings.
5. Push switch in.
6. With iTV setup remote (in setup mode) press MENU button.
7. Set HIFACE CONTROL to ON. Exit menu.
8. Ready for external control.

CLEANING & CARE

- To avoid possible shock hazard, please be sure that the television is unplugged from the electrical outlet before cleaning.
- When cleaning the television screen, take care not to scratch or damage the screen surface (avoid wearing jewelry or using anything abrasive). Wipe the front of the screen with a clean cloth dampened with water. Use even, easy, vertical strokes when cleaning.
- Gently wipe the cabinet surfaces with a clean cloth or sponge dampened in a solution of cool clear water. Use a clean dry cloth to dry the wiped surfaces.
- Occasionally vacuum the ventilation holes or slots in the cabinet back.
- Never use thinners, insecticide sprays, or other chemicals on or near the cabinet, as they might cause permanent marring of the cabinet finish.

END-OF-LIFE DISPOSAL

- This Philips Institutional Television product and its packaging contain materials that can be recycled and re-used. Specialized companies can recycle your product to increase the amount of reusable materials and minimize the amounts which need to be properly disposed.
- This product might also use batteries which should not be thrown away when depleted, but should be handed in and disposed of as small chemical waste.
- Please find out about the local regulations regarding the disposal of the television, batteries, and packaging materials whenever you replace existing equipment.

LIMITED WARRANTY

COLOR TELEVISION

One Year Free Labor; One Year Free Service on Parts (Two Years Free Service on Color Picture Tube)

IMPORTANT NOTE: Please refer to **Product Application & Warranty Info.** earlier in this documentation.

WHO IS COVERED?

You must have proof of purchase to receive warranty service. A sales receipt or other document showing that you purchased the product is considered proof of purchase.

WHAT IS COVERED?

Warranty coverage begins the day you buy your product. *For one year thereafter*, all parts will be repaired or replaced, and labor is free. From one to two years from the day of purchase, you pay for the replacement or repair of all parts except the picture tube, and for all labor charges. After two years from the day of purchase, you pay for the replacement or repair of all parts, and for all labor charges. All parts, including repaired and replaced parts, are covered only for the original warranty period. When the warranty on the product expires, the warranty on all replaced and repaired parts also expires.

WHAT IS EXCLUDED?

Your warranty does not cover:

- labor charges for installation or setup of the product, adjustment of customer controls on the product, and installation or repair of antenna systems outside of the product.
- product repair and/or part replacement because of misuse, accident, unauthorized repair or other cause not within the control of Philips Consumer Electronics Company.
- reception problems caused by signal conditions or cable or antenna systems outside the unit.
- a product that requires modification or adaptation to enable it to operate in any country other than the country for which it was designed, manufactured, approved and/or authorized, or repair of products damaged by these modifications.
- incidental or consequential damages resulting from the product. (Some states do not allow the exclusion of incidental or consequential damages, so the above exclusion may not apply to you. This includes, but is not limited to, prerecorded material, whether copyrighted or not copyrighted.)

WHERE IS SERVICE AVAILABLE?

Warranty service is available in all countries where the product is officially distributed by Philips Consumer Electronics Company. In countries where Philips Consumer Electronics Company does not distribute the product, the local Philips service organization will attempt to provide service (although there may be a delay if the appropriate spare parts and technical manual(s) are not readily available).

MAKE SURE YOU KEEP...

Please keep your sales receipt or other document showing proof of purchase. Attach it to this owner's manual and keep both nearby. Also keep the original box and packing material in case you need to return your product. **BEFORE REQUESTING SERVICE...**

Please check your owner's manual before requesting service.

Adjustments of the controls discussed there may save you a service call.

TO GET WARRANTY SERVICE IN U.S.A., PUERTO RICO OR U.S. VIRGIN ISLANDS...

Contact a Philips factory service center (see enclosed list) or authorized service center to arrange repair.

(In U.S.A., Puerto Rico and U.S. Virgin Islands, all implied warranties, including implied warranties of merchantability and fitness for a particular purpose, are limited in duration to the duration of this express warranty. But, because some states do not allow limitations on how long an implied warranty may last, this limitation may not apply to you.)

TO GET WARRANTY SERVICE IN CANADA...

Please contact Philips at:

800-661-6162 (French Speaking) (within Canada only)
800-531-0039 (English Speaking)

(In Canada, this warranty is given in lieu of all other warranties. No other warranties are expressed or implied, including any implied warranties of merchantability or fitness for a particular purpose. Philips is not liable under any circumstances for any direct, indirect, special, incidental or consequential damages, howsoever incurred, even if notified of the possibility of such damages.)

REMEMBER...

Please record the model and serial numbers found on the product below. Also, please fill out and mail your warranty registration card promptly. It will be easier for us to notify you if necessary.

MODEL # _____

SERIAL # _____

INDEX

20FT3010/37, HIFACE/IFACE VERSIONS	9	OPERATIONAL MODE	8
3-DIGIT ENTRY	12	OUTDOOR ANTENNA GROUNDING	2
A/CH A/V SWITCH	12	PENDANT / PILLOW SPEAKER	13
A/VJACK PANEL CONNECTIONS	6	POWER ADAPTER	5
ACCESSORIES	5	POWER ADAPTER CABLE	5
AUTO PROGRAM	10	POWER ON (STANDARD / FORCED)	11
AV LOCK (OFF/ ON)	12	PRODUCT APPLICATION AND WARRANTY INFO ...	4
CHANNEL	10	PRODUCT DESCRIPTION	4
CHANNEL DISPLAY	11	RC2573GR	8
CHANNEL GUIDE	12	REMINDER	12
CHANNEL INSTALL	10	RG4172BK	8
CHANNEL MAPPING	10	SAFETY INSTRUCTIONS	2
CHANNEL RING	10	SECURITY	12
CLEANING & CARE	16	SETUP MENU	9
CONNECTIONS, A/V	6	SETUP MENU ITEM DESCRIPTIONS	10
CONNECTIONS, IFACE	7	STORE (SETTINGS, HOTEL MODE)	15
CURRENT RING	10-11	SWITCH ON CHANNEL	11
CVBS	3	SYSTEM STATUS	8
DFU	3	VERSIONS, IFACE / HIFACE	9
DISPOSAL, END-OF-LIFE	16	WELCOME MESSAGE	11
ESP (ENERGY SAVINGS PROGRAMMABILITY)	11	YPBPR	3, 6
GLOSSARY	3		
HCIFACE/ HIFACE 0.07	10		
HIFACE	3		
HIFACE CONTROL	12		
HOSPITAL GRADE 3-PRONG PLUG	5		
HOTEL MODE	15		
HOTEL MODE SETUP MENU	15		
IFACE	3-4		
IFACE CONTROL	12, 14		
IFACE MENU	14		
IFACE-READY OPERATION, RETURN TO	15		
INPUT	10		
IR SWITCH	14		
IRFACE	3		
JACK PANEL	4		
KEYBOARD LOCK	11		
LABEL	10		
LANGUAGE	10		
LCD PANEL MENU ACCESS	14		
LIMITED WARRANTY	16		
MAIN MENU, LCD	14		
MASTER SETUP REMOTES	8		
MENU, LCD HOTEL MODE	14		