

Saturn
2008 **ASTRA**
PRODUCT GUIDE



The revitalization of Saturn's product portfolio, which began two years ago, comes full circle with the launch of the **all-new 2008 Saturn ASTRA**. Our new products are designed to match the unparalleled customer service that Saturn delivers. ASTRA continues the revitalization with its **bold styling, remarkable interior refinement and exhilarating driving characteristics**.

ASTRA is the result of the best ideas and resources from around the world. Engineered in Europe, Brazil and the U.S. and built in Antwerp, Belgium, this sport compact redefines Saturn's small-car entry-level offerings with a degree of style, refinement and quality uncommon in this segment. It is also **incredibly fun** behind the wheel with driving dynamics bred on the twisting roads of Europe.

Available in **3-Door and 5-Door hatchback** configurations, ASTRA also represents a new body style for Saturn. Given the **significant growth in the hatchback segment**, ASTRA's design will **attract new import-oriented customers** to the brand, giving you an opportunity to expand your sales and create new life-long Saturn loyalists.

This Product Guide is just one of many training and information resources. It works in conjunction with the ASTRA DVD/CD-ROM to provide the information you need to better explain and demonstrate ASTRA's features, advantages and benefits to customers. As Saturn's portfolio expands it is critical that you are fully prepared to answer customer questions and properly present vehicle features.

Jill Lajdziak, Saturn General Manager

TABLE OF CONTENTS

| | |
|---|----|
| Strategic Role, Market and the ASTRA Customer | 1 |
| Key Selling Features | 2 |
| Trim Levels/Features/Packages | 3 |
| Accessories | 5 |
| Exterior Design & Styling | 6 |
| Performance, Ride & Handling | 8 |
| Safety & Security | 10 |
| Comfort & Convenience | 12 |
| Cost of Ownership | 15 |
| Technology | 16 |
| Competitive Comparisons | 20 |
| VW Rabbit | 21 |
| Honda Civic | 22 |
| Mazda3 5-Door | 23 |
| Features & Specifications Charts | 24 |



Strategic Role

Though recent product introductions prove that Saturn offers much more than small cars, this is the segment where we started. Small cars are a key element of Saturn's heritage and something customers expect of the brand. But ASTRA is unlike any small car ever offered by Saturn and builds on the best the world has to offer. Saturn ASTRA was designed and engineered in Brazil, Europe and the U.S., and it is built in Antwerp, Belgium.

- **Bold styling and refinement** with our first hatchback available in both 3-Door and 5-Door configurations
- **European driving dynamics** perfected on the twisting roads of Germany and tested across the U.S. make ASTRA incredibly fun to drive
- **Well equipped** with numerous unexpected items and technologically advanced safety features

Market Introduction

Hatchbacks represent a growing segment of the small car market, increasing 5–14% in sales per year for the last five years and now account for more than 400,000 units. That growth has been in both 3-Door and 5-Door body styles, with the latter making up about 65% of the sales, which is consistent with the expected ASTRA model mix.

There are 12 different nameplates offering hatchback cars. ASTRA's primary competitors are the VW Rabbit, available in both 3-Door and 5-Door versions, and the Mazda3 5-Door. Honda Civic is also considered a key competitor from a content, pricing and volume perspective; but it is only offered as a coupe or sedan (there is no hatchback version).

The ASTRA Customer

Hatchback customers are somewhat different than your typical small car buyers, including those attracted to Saturn ION. They are generally younger, more likely to be male, significantly more educated and have a much higher median income. Though they are not as price sensitive and can afford a larger vehicle, hatchback buyers prefer a right sized, uniquely styled and functional vehicle that meets their needs. Many have never considered Saturn before because we have never offered a hatchback. This is your opportunity to introduce the Saturn experience to a new generation of buyers.



HATCHBACK CUSTOMER DEMOGRAPHICS

| | |
|------------------|---------|
| Average Age | 40 yrs. |
| Male | 55% |
| College Graduate | 52% |
| Median Income | \$73K |

HATCHBACK CUSTOMER PSYCHOGRAPHICS

- Still want traditional small car attributes like fuel economy, value, safety, dependability and reliability
- Stronger focus on the practicality and versatility inherent in the hatchback design with a desire for more interior comfort, room and technological innovations
- Strong penchant for sporty styling and superb driving dynamics
- Want a vehicle that expresses their youthful attitude, sets them apart from the crowd and provides the functionality to match their active lifestyle

2008 Saturn ASTRA

Key Selling Features



European Driving Dynamics

MACPHERSON STRUT FRONT/ TORSION BEAM REAR SUSPENSION

The independent front suspension combined with a rear torsion beam axle provides fantastic cornering ability and greater agility with a solid, secure feel. Lowered, sport suspension standard on 3-Door XR, available on 5-Door XR.

POWERFUL AND EFFICIENT ECOTEC 1.8L ENGINE

Generates 138 hp and features Variable Valve Timing (VVT) with dual cam phasers for a broad, flat torque curve. Mated to a 5-speed manual transmission or a 4-speed automatic transmission with neutral idle for improved fuel economy and a winter mode to reduce torque and thereby limit front wheel spin on slippery surfaces.

ELECTRO-HYDRAULIC STEERING

Optimized rack-and-pinion steering has a very linear response with a "connected to the road" feel. Hydraulic pump only operates when needed which enhances fuel efficiency.

Bold Styling & Refinement

SPORT CUES WITH LARGE WHEELS AND TIRES

Athletic proportions with a long wheelbase, wide track, short overhangs and aerodynamically raked windshield and roofline. Distinctly different appearance between 3-Door and 5-Door models. Prominent wheel flares with 16", 17" or 18" wheels give ASTRA a strong performance stance.

EXCELLENT FIT-AND-FINISH WITH TIGHT EXTERIOR GAPS

ASTRA has remarkably tight gaps between exterior panels and components for a more refined and upscale appearance. The look is very clean with tightly integrated wraparound fascias, jeweled lights and no cladding.

HIGH-QUALITY INTERIOR MATERIALS

Ergonomic layout and operation of controls with a premium finish on the instrument panel for a low-gloss, soft-touch feel. Incredible attention to detail includes tight gaps, metallic look accent trim, a woven headliner, cloth-wrapped A-pillars and flat woven cloth fabrics. Luxurious leather seating surfaces are available.

Well Equipped

STABILITRAK – ELECTRONIC STABILITY CONTROL

Automatically corrects oversteer and understeer conditions for more stable handling in extreme situations (standard on 3-Door, available on 5-Door). Includes traction control with brake and throttle intervention.

SIX AIR BAGS, ACTIVE HEAD RESTRAINTS AND PEDAL RELEASE SYSTEM

Occupant protection measures include head-curtain air bags as well as seat-mounted side-impact air bags with both pelvic and thorax protection for front occupants. Front seat active head restraints and a pedal release system are also standard.

60/40 SPLIT REAR SEATS AND CARGO COVER

Split-folding rear seats are standard for greater flexibility and a removable cargo cover help keep prying eyes from seeing valuable packages through the liftgate window.

STATE-OF-THE-ART AUDIO AND INFORMATION SYSTEMS

Radios and a Driver Information Center provide advanced infotainment features and vehicle messages. Steering wheel controls on ASTRA XR make it easy to control the systems while keeping your hands on the steering wheel. OnStar is standard on every ASTRA.

HEATED FRONT SEATS AVAILABLE WITH CLOTH AND LEATHER

Heated front seats are available with cloth seats on all models, a surprising feature in this segment, and also included with the available leather seats. They provide three heating levels for a greater range of comfort.

The new Saturn ASTRA is available in three different configurations: 5-Door XE (ZAR48), 5-Door XR (ZAT48) and 3-Door XR (ZAT08).

Select Standard 5-Door XE Features

- ECOTEC 1.8L DOHC 16-valve 4-cylinder engine with VVT
- 5-speed manual transmission
- 4-wheel disc brakes with ABS and Cornering Brake Control
- Electro-hydraulic power steering (15:1 ratio)
- MacPherson strut front suspension with stabilizer bar
- Torsion beam axle rear suspension
- 16" steel wheels with full covers
- P205/55R16 all-season touring tires
- Daytime Running Lamps
- Halogen headlamps (projector-style low beams, reflector-style high beams) with automatic lamp control
- Side repeater lights
- Body-color power outside mirrors, heated with manual folding capability
- Body-color bodyside moldings and door handles
- Roof spoiler integrated into liftgate includes LED CHMSL and washer nozzle
- RainSense windshield wipers
- Rear wiper and washer
- AM/FM stereo with CD player and six speakers
- Driver Information Center
- Heater with fan and rear floor heat ducts
- Charcoal Metallic interior accent trim
- Cloth front bucket seats with driver-side height adjuster
- Rear 60/40 split-folding seat with three removable headrests
- Rake and telescope steering column
- Lane change turn signal feature
- Cruise control
- Central locking system with one-button lock/unlock of all doors, liftgate and fuel filler door
- Power windows with express down feature on all four windows
- Front floor console with cup holder, 12-volt power outlet, open storage bin and manual parking brake lever
- Retractable dual cup holders in rear seat cushion
- Carpeted front and rear floor mats with retention feature on front mats
- Assist handles at both rear door locations with coat hooks
- Sunglass storage compartments above each front door
- Lighted glove box with removable shelf, pen clip and coinholder
- Front and rear door map pockets
- Driver and front passenger covered illuminated visor vanity mirrors
- Front and rear dual map lights and front courtesy light
- Removable rear cargo cover and cargo area light
- Tire Pressure Monitor System
- Remote Keyless Entry with express-down window activation and foldable key on the fob
- Theft-deterrent system and content theft system
- OnStar with one-year Safe & Sound Plan
- 3-point safety belts for all seating positions
- LATCH system for child safety seats in all three rear positions
- Dual-stage front air bags with Passenger Sensing System
- Head-curtain side-impact air bags
- Seat-mounted front side-impact air bags with both thorax and pelvic protection
- Passenger safety belt reminder
- Dual pretensioners and load limiters on front seat belts
- Pedal release system
- Active front head restraints

2008 Saturn ASTRA

Trim Levels/Features/Packages



5-Door XR Adds

- Electro-hydraulic power steering with variable effort (15:1 ratio)
- 16" alloy twin-spoke wheels
- Projector beam fog lamps
- Stainless steel beltline molding along the bottom of the side windows
- Bright front door sill plates
- AM/FM stereo with CD/MP3 player and seven speakers (including center-mounted speaker)
- Single-zone manual air conditioning with particle filter
- Steering wheel-mounted controls for the Driver Information Center and audio system
- Silver Metallic interior accent trim
- Unique cloth seat inserts
- Seatback pockets on both front seats

3-Door XR Adds

- StabiliTrak – Stability Control System
- Lowered sport-tuned suspension
- Electro-hydraulic power steering with quick 14:1 ratio
- 17" alloy ten-spoke wheels
- P225/45R17 all-season performance tires
- Black beltline molding replaces stainless steel molding
- Bright dual-wall exhaust
- High-sport front bucket seats with a lower position, enhanced bolsters and manual driver lumbar adjuster
- Easy Entry front sliding seats
- Sport instrument gauges with bright rings
- Additional cup holders molded into rear sidewall trim
- Assist grip above passenger door replaces sunglass holder

XE and XR Free-Flow Options

- StabiliTrak – Stability Control System (standard on 3-Door, available on 5-Door)
- 4-speed automatic transmission with neutral idle, winter mode, performance on demand and downhill grade assist
- 16" alloy twin-spoke wheels (XE only, standard on 5-Door XR)
- 18" alloy star-spoke wheels with P215/45R18 summer-only performance tires (3-Door XR only)
- Single-zone manual air conditioning (standard on XR, available on XE) with particle filter
- Heated front seats (available as a free-flow option with cloth seats only, included with leather seats as part of the Premium Trim Package)
- Dual-panel power sunroof with electric sunshade (5-Door only, requires air conditioning on XE)
- Oil pan heater

XR Equipment Packages

- **Advanced Audio Package (PCU):** AM/FM stereo with 6-disc CD-changer and MP3 playback, premium 7-speaker system and an enhanced Driver Information Center
- **Premium Trim Package (PCQ):** Leather Seat Surfaces, leather-wrapped steering wheel, vinyl door trim, heated driver and front passenger seats, and ambient LED door pocket lighting. Includes sport front bucket seats with enhanced bolsters and driver manual lumbar adjuster on 5-Door XR (high-sport front bucket seats are standard on 3-Door). Includes sport leather-wrapped steering wheel on 3-Door XR.
- **Sport Handling Package (PDX):** StabiliTrak – Stability Control System, lowered sport-tuned suspension, quick ratio steering (14:1), 17" alloy wheels and P225/45R17 all-season performance tires (standard on 3-Door, available on 5-Door XR)

Exterior Color Choices

- Arctic White
- Black Sapphire
- Salsa Red
- Silver Sand
- Star Silver
- Twilight Blue

Accessories

- **Front Custom Molded Splash Guards** prevent the tires from splattering mud, salt, pebbles and other debris onto the sides of ASTRA
- **Premium All-Weather Floor Mats** are custom-fitted and keep mud, snow and whatever else might be hitching a ride on the soles of your shoes off your carpets
- **Side-Window Weather Deflectors (Front and Rear)** are designed to let fresh air in and keep gusts and weather out
- **Cargo Liner** is a convenient accessory mat that protects against spills
- **Rear Cargo Convenience Nets** keep cargo from moving around
- **Rear Window Shade** protects your precious cargo from the sun and keeps it hidden from prying eyes
- **Glove Box Organizer** helps keep little things in place with a tactile material that prevents them from sliding around
- **Sport Pedals** designed specifically for ASTRA replace existing pedals for a sporty performance feel and finish
- **First Aid Kit** is designed to fit into the rear trim of the cargo area and is held in place by an elastic strap
- **Smokers Package** has an easy-to-insert design that blends into the ASTRA's interior
- **Wheel Locks** with keyed lug nuts help prevent wheel theft
- **Oil Pan Heater** reduces cold-start cranking times for customers in cold climates (see page 8 for more details)

2008 Saturn ASTRA

Exterior Design & Styling

The new Saturn ASTRA has bold styling with clean, sculpted lines. Performance-oriented cues like the long wheelbase, raked windshield and roofline, wide track and short overhangs give it a taut, athletic stance with the wheels pushed to the corners. Fit-and-finish is outstanding with close tolerances and a remarkable attention to detail. Gaps are very even, less than 3mm (0.12") in most areas and a miniscule 1.5mm where the headlamps meet the fascia and fender.

Large, **jeweled headlamps** have clear outer lenses and dark interior bezels with bright trim rings. Projector-style halogen low beams with reflector-style halogen high beams.

Windshield and rear window have exposed glass edges rather than unsightly moldings. Low-profile flat-blade windshield **wipers** reduce wind noise.

Roofline and rear door on 5-Door models extend rearward to maximize ease of entry **interior spaciousness, visibility and headroom.**

Central crease line on the hood **carries through** to the upper instrument panel inside the vehicle and onto the rear liftgate.

Shoulder line runs the length of the vehicle from headlamp to tail lamp, giving it a **sleek, muscular look.** Stainless steel beltline molding along bottom edge of windows is included on 5-Door XR.



Bright horizontal grille bar and **prominent** Saturn logo.

Tightly integrated, full wraparound front fascias have a **clean appearance** with a solid, low-slung look.

Projector beam fog lamps are **integrated** into the lower fascia on XR.

Side repeater lights are a common European cue.

2008 Saturn ASTRA

Exterior Design & Styling

Roof spoiler **integrated** into the liftgate includes an LED center high-mounted stop light and window washer nozzle.

Pronounced wheel flares showcase the large 16", 17" or 18" wheels and give ASTRA a strong stance, making it appear **wider and more stable**.

Integrated, one-piece rear fascia has a V-shaped crease line carried from the hood, which is **more prominent** on 3-Door model.

Faster sloping rear roof line is **stretched and swept back** on 3-Door models for a sportier look.

Body-color, power-adjustable, outside mirrors are heated and manually fold.

Bright dual wall exhaust tip (3-Door).

Touch pad liftgate release.

Bright bar extends across liftgate with the ASTRA name and trim level.

Large, expressive, wraparound tail lamps help create a **wide-shouldered** stance.

Locking fuel filler door.

Body-color door handles, bodyside moldings and rocker panels on all models.



Large wheels and tires fill the openings and enhance ASTRA's strong, aggressive proportions. There are several different designs for greater variety and a customized look.

| | 5-Door XE | 5-Door XR | 3-Door XR |
|--------------------------------------|-----------|-----------|-----------|
| 16" steel wheels w/ full covers | S | - | - |
| A 16" alloy twin-spoke wheels | A | S | - |
| B 17" alloy 5-spoke wheels | - | A | - |
| C 17" alloy 10-spoke wheels | - | - | S |
| D 18" alloy star-spoke wheels | - | - | A |



2008 Saturn ASTRA

Performance, Ride & Handling



ASTRA's advanced VVT system with dual cam phasers delivers 90% of max torque from a low 2200 rpm all the way up to 6200 rpm. This broad, flat torque curve provides strong acceleration from a stop as well as when passing on the highway.

Note: Some customers in cold climates may notice longer crank-over times when starting a cold engine due to the resting position of the dual cam phasers. An available oil pan heater can be installed to address this situation.

The new Saturn ASTRA is incredibly fun to drive with authentic European driving dynamics bred on the narrow, twisting roads of Europe and refined through testing across the U.S. Behind the wheel you will experience a "connected to the road" feeling with neutral cornering and taut handling along with exceptional ride comfort.

ECOTEC 1.8L Engine

- **Dual overhead cams (DOHC), four valves per cylinder and Variable Valve Timing (VVT).** Dual cam phasers allow both the intake and exhaust valve timing to be varied independently. This provides more precise valve timing control for optimum performance and fuel economy.
- **140 hp @ 6300 rpm**
- **126 lb.-ft. of torque @ 3800 rpm**
- **Two-step intake manifold, deep drawn exhaust manifold and dual catalytic converters** enhance engine "breathing" for improved performance.
- **Lightweight design** at only 260 lbs. to help maximize fuel economy
- **Individual coils** on each spark plug for stronger spark and elimination of needlessly firing spark on the exhaust stroke for improved efficiency
- **Digital engine sensors** rather than analog for greater precision, accuracy and speed for optimum performance and fuel efficiency
- **Increased engine rigidity** for reduced noise and vibration resulting from a structural oil pan, box-like lower crankcase, multi-layered steel gasket, long cylinder head bolts and a full-circle transmission mount

Transmissions

- **Standard 5-speed manual transmission** with a short throw design for crisp, performance shifts
- **Available 4-speed Aisin automatic transmission** has sophisticated electronic controls which also manage the torque converter for smooth shifting, low noise and high durability
 - Neutral Idle feature automatically shifts into neutral when stopped to reduce drag on the engine and improve fuel efficiency
 - Winter Mode is engaged via a pushbutton and causes the transmission to start in third gear to reduce torque and limit wheel spin on low-traction surfaces
 - Performance on Demand (throttle kick-down) automatically downshifts during wide-open throttle for immediate performance
 - Downhill Grade Assist forces a downshift to utilize engine braking and thereby reduce brake pad wear

Solid, Stable Foundation

- **Very stable footprint** with a long wheelbase and wide tread
- **Body Frame Integral (BFI) structure** combines a unibody design with underbody rails running from front to rear for added strength. This allows for optimal tuning of the suspension, steering, brakes and other chassis features for a heightened sense of stability and driving confidence. It also provides a refined, high-quality feel with greater overall stiffness that minimizes noise and vibration.
- **Hydroformed front subframe** with hydraulic bushings help prevent steering wheel shake and the transmission of noise and vibration from the front suspension
- **Hydraulic (manual transmission) or elastomeric (auto transmission) engine mounts** isolate the engine and reduce vibration

ASTRA's rear suspension is a highly sophisticated and refined torsion beam axle design. Why was this chosen instead of an independent design like that found on the competitors? There are several advantages:

- Exceptionally sturdy and able to handle high loads
- Very compact and light weight, allowing for a lower cargo floor and increased interior space
- Extremely adjustable and tunable for very specific ride and handling characteristics

Front and Rear Suspension Designs

- **MacPherson strut front suspension** includes a stabilizer bar for flat, stable cornering. The decoupled strut mount provides better damper tuning and improves noise isolation.
- **Rear suspension has a torsion beam axle** which acts as a large stabilizer bar to improve cornering and handling. The control arms are integrated with the wheel carriers in a one-piece aluminum design to reduce weight.
- **Front and rear gas preloaded shocks** have an optimized valve system for an excellent balance between ride and handling
- **Lowered, Sport-tuned suspension** is standard on 3-Door XR, available on 5-Door XR. The chassis is lowered by 15mm and both the front and rear roll rates are adjusted for a firmer, flatter handling feel.

Electro-Hydraulic Power Steering (EHPS)

- **Optimized rack-and-pinion steering** has a very linear response for smooth, consistent feel at all speeds and cornering angles
- **Hydraulic pump only operates as needed**, thereby reducing engine load and enhancing fuel efficiency
- **Responsive 15:1 ratio** standard on 5-Door models for crisp handling and response to driver inputs
- **Quicker 14:1 ratio** on 3-Door, available on 5-Door XR, provides faster response to driver inputs for a more nimble feel
- **Variable-effort** standard on 3-Door and 5-Door XR, available on 5-Door XE with StabiliTrak. Additional assist at low speeds makes maneuvering easier. Less assist at high speeds assures excellent response.

Large, Road-Gripping Tires

ASTRA comes equipped with larger, wider tires for added road-gripping traction. See page 7 for wheel details.

| | 5-Door XE | 5-Door XR | 3-Door XR |
|---|-----------|-----------|-----------|
| P205/55R16 all-season touring tires | S | S | - |
| P225/45R17 all-season performance tires | - | A | S |
| P215/45R18 summer-only* performance tires | - | - | A |

* Caution your customers that these tires are designed to perform on dry or wet pavement. They are not recommended for driving in cold or winter conditions where the roads may be icy or snowy. Customers who select this option must change to all-season or winter tires if they plan to drive on snow or ice.

2008 Saturn ASTRA

Safety & Security

Safety is one of Saturn's brand pillars and a hallmark of our vehicles. ASTRA continues in that tradition with a full complement of active and passive safety features. These include StabiliTrak – Stability Control System, six air bags, active front head restraints, a pedal release system and standard OnStar.

Safety Before

COLLISION AVOIDANCE FEATURES

- **Secure, stable handling characteristics** and linear steering response help the driver maintain control during emergency maneuvers (see previous section for details)
- **Standard 4-wheel disc brakes** featuring large diameter rotors for excellent stopping power. Estimated stopping distance from 60–0 mph is 124' with 16" and 17" wheels; 123' with 18" wheels. Cast iron calipers are impervious to deformation over time. Low-compressibility brake pads with organic linings provide a more direct pedal feel, improved wear, reduced noise and long-lasting performance.
- **Standard ABS** with wheel speed sensors located at each wheel. Includes Cornering Brake Control to neutralize oversteer (tendency of the rear wheels to lose traction) when braking in a curve.
- **StabiliTrak – Stability Control System** takes handling and control a step further. Works in tandem with ABS and traction control to automatically correct oversteer/understeer conditions. Gives the driver more precise and stable handling while helping to keep the vehicle traveling in the direction being steered, especially during emergency maneuvers. Includes traction control system with both brake and engine torque intervention for maximum effectiveness. This enhances traction during launch and acceleration on all road surfaces. Standard on 3-Door, available on 5-Door.
- **Standard Tire Pressure Monitor** warns driver when air pressure in a tire becomes low with a light on the gauge cluster.

STANDARD SECURITY FEATURES

- **Remote Keyless Entry** with folding key integrated into the fob
- **Security system with engine immobilizer and content-theft alarm.** Press the lock button on the key fob twice to activate the alarm (light will flash on instrument panel door lock button)
- **OnStar with Stolen Vehicle Location Assistance** is standard on every ASTRA
- **Child safety rear locks with lockout switch** located on inside edge of doors can only be opened from the outside when engaged (5-Door only)
- **Rear window lockout switch** to prevent accidental operation by small children or pets (5-Door only)
- **Automatic locking power door locks** activate when vehicle exceeds approximately 8 mph
- **Battery rundown protection** automatically turns off certain lights after 20 minutes
- **Removable cargo cover** keeps prying eyes from valuable packages

To give owners added peace-of-mind and an increased sense of security, ASTRA's standard OnStar includes a 1-year Safe & Sound Plan. In addition, customers can upgrade to the Directions & Connections Plan which includes Turn-by-Turn Navigation, a great alternative to the instrument panel-mounted systems found on competitors. This voice-guided navigation is easier to use and helps keep the drivers hands on the wheel and eyes on the road.

Turn-by-Turn Navigation is also much more cost effective as a \$100 per year upgrade to the basic plan. The navigation systems found on our competitors have an MSRP of \$1,750 which is the equivalent of more than 6.5 years* of Directions & Connections. Moreover, OnStar Turn-by-Turn is continually updated, so there is no need for DVD updates, and it is available on all ASTRA models (navigation systems are only offered on the top-of-the-line competitive models).

* Calculated based on \$100 charge to upgrade to Directions & Connections for the first year, plus \$299 each additional year (Directions & Connections).

Safety During

- **Excellent crashworthiness** resulting from a high-strength steel unibody construction with full-length frame rails, a rigid safety cage, and both front and rear crush zones to absorb impact energy
- **Front and rear 5 mph bumpers** with Xenoy composite energy absorbers help disperse rather than just absorb energy
- **Specially designed hood reinforcement** has a honeycomb-like design that disperses energy and helps minimize injury to pedestrians
- **Dual-stage driver and front passenger air bags**
- **Passenger Sensing System** automatically disables the front air bag if a sensor in the seat determines the occupant is a child or person of small stature
- **Standard head-curtain side-impact air bags** protect front and rear outboard occupants
- **Standard seat-mounted side-impact air bags**, an unexpected safety feature in this segment, provide additional protection for front occupants. Includes both thorax and pelvic protection
- Additional unexpected features in this segment include **active front head restraints** that automatically move into the upright position in the event of a rear collision, and a **pedal release system** to reduce intrusion of the pedals into the driver's foot space upon impact
- **Three-point safety belts for all seating positions.** Includes seatbelt pretensioners and load limiters up front, and rear-seat outboard child comfort guides for a better fit. Rear seats also have three removable headrests
- **Front seat belt dual pretensioners and load limiters** reduce belt slack and then gradually loosen to manage occupant energy in a collision
- **LATCH child safety seat provisions** are provided for all three rear-seat positions

Safety After

- The moments after an accident can be critically important. That's why every ASTRA comes equipped with **OnStar and Automatic Notification of Air Bag Deployment**. OnStar is automatically notified when an air bag is deployed and emergency services are dispatched if you need assistance.



2008 Saturn ASTRA

Comfort & Convenience

The new ASTRA has a European-styled interior that is more upscale and precisely refined than one would expect in this segment. Interior fit-and-finish is remarkable with high-quality materials, supportive yet comfortable seating, and numerous premium features. The hatchback design also provides greater functionality and versatility for the more youthful, active buyers this vehicle will attract.



Interior Design Highlights

- **Instrument panel** is made from a cast skin foam process that creates a pronounced grain texture with a low-gloss finish and soft-touch feel
- **Gaps between panels and components** are nearly imperceptible with incredibly tight tolerances measuring less than 1mm (0.04")
- **Charcoal interior color** complemented by a contrasting silver metallic matte chrome finish on XR models, charcoal metallic on XE
- **Cloth-covered A-pillars and woven headliner** are additional fine touches unexpected in this segment
- **Simple, straightforward cockpit design** is clean and intuitive with amber lighting, backlit controls and a 3-gauge cluster. Controls are ergonomically designed and placed for ease of use and have an excellent tactile feel.
- **Three-spoke steering wheel** has a wide-diameter grip with both rake and telescope adjustments to ensure proper positioning. Leather-wrapped available on 5-Door XR, sport leather-wrapped available on 3-Door XR.
- **Steering wheel-mounted controls** for the Driver Information Center and audio system (XR models)
- **Ergonomically placed controls** on steering column mounted stalks for cruise control, turn and lane change signaling, headlamp beam adjustment and wiper system functions
- **Defining crease line** of the hood extends onto the upper instrument panel and down the center stack, tying the exterior and interior design together

Spacious and Comfortable Seating

- **European-style front bucket seats** have firm foam cushions and large bolsters for more lateral support to hold the driver in place
- **Tailored, flat-woven fabrics** have a high-quality feel and vary by trim level
- **Leather seating surfaces** are available on the XR models as part of the Premium Trim Package
- **Sport front bucket seats** are available on 5-Door XR with leather. These are enhanced with more robust back and thigh bolsters as well as a manual lumbar adjuster for the driver.



- **High-sport front bucket seats** are standard on 3-Door XR. The firmer bolsters better “hug” the driver during aggressive maneuvers. Includes a manual lumbar adjuster for the driver.
- **Driver seat height adjuster** is standard on all models
- **Heated front seats** are available with cloth fabric on all ASTRA models, a surprising extra feature in this segment, and also included with leather seats as part of the Premium Trim Package. There are three levels of operation and heating elements are located in the bolsters and inserts of both the cushions and seatbacks.
- **Easy Entry front sliding seats** make access to the rear more convenient on ASTRA 3-Door. Just pull the lever up, fold the seatback and slide the seat forward.
- **Three adjustable and removable headrests** are provided for rear-seat passengers

Interior Storage and Flexibility

- **60/40 split-folding rear seatbacks** are standard on every ASTRA for added versatility. The release levers are located high on the seat sides at shoulder level for easier access from the front or back.
- **Maximum of 44.7 cu. ft. of storage** with the rear seatbacks folded down on the 5-Door model (37.8 cu. ft. on 3-Door). Nicely finished and illuminated cargo area with seatbacks that fold nearly flat to the rear cargo floor for easier loading/unloading. Cargo tie downs help to secure loads.
- **Easy-to-remove rear cargo cover** for “out of sight” secure storage. Keeps prying eyes from seeing valuable packages and is easily removable when additional cargo space is needed.
- **Large, illuminated glove box** with dampened hinges that allow the door to gently open and includes a removable shelf
- **Overhead sunglass storage compartments** located above both front doors on 5-Door models (with sunroof, the passenger side is replaced with an assist grip on XR, and both are replaced with assist grips on XE). Sunglass storage above driver’s door with passenger-side assist grip on 3-Door XR.
- **Cup holder locations** include one in the front console and two that fold out of the front edge of the rear seat. ASTRA 3-Door adds two additional cup holders molded into the rear side panels.
- **Map pockets** are provided in both the front and rear
- **Seatback pockets** on both front seats (XR only)
- **Auxiliary 12-volt power outlet** on the instrument panel
- **Open bin** located on the instrument panel next to the power outlet

2008 Saturn ASTRA

Comfort & Convenience



Segment's Largest Sunroof

Available on ASTRA 5-Door, this dual-panel sunroof is the largest available sunroof in the segment and greatly enhances the sense of interior spaciousness, especially for rear passengers. Front panel tilts up and slides back over rear panel. Includes a power mesh sunshade, express-open for both the glass panel and shade, and a pop-up wind deflector

See pages 16-17 for more information on ASTRA's technology and audio systems. Also, make sure to watch the *ASTRA Launch Training DVD/CD-ROM* for instructions on how to operate key features.

Additional Premium Features

ASTRA is equipped with many premium comfort and convenience features beyond those covered in the previous sections. All of the following are standard except where noted:

- Remote Keyless Entry with folding key integrated into the fob and single pushbutton lock/unlock of all doors, liftgate and fuel filler door as well as remote operation of the express-down power windows
- Air conditioning with a particle filter (standard on XR, available on XE)
- Power door locks with single button central locking system
- Power windows with express-down function for all windows (front and rear on 5-Door)
- RainSense windshield wipers automatically actuate and adjust the wipe frequency when water is detected (wipers must be turned on and set to the intermittent position)
- Rear wiper and washer; wiper automatically activates when front wipers are on and vehicle is shifted into reverse
- Cruise control mounted on stalk to keep hands on steering wheel
- Lane change turn signal feature automatically flashes the signals three times and then turns off to signal a lane change
- Automatic lighting control turns the exterior lamps on or off depending upon outside light levels
- Follow home exterior lighting feature causes lights to remain on for 30 seconds after you exit the vehicle, giving you time to enter your home or building
- Bright front door sill plates (standard on XR only)
- Illuminated door handle pockets (available on XR with Premium Trim Package)
- Front and rear dual map lights and front courtesy light
- Dampened assist grips above passenger door on 3-Door, above rear doors on 5-Door (front assist grips replace certain sunglasses storage compartments with sunroof)
- Carpeted front and rear floormats with front retention feature
- Covered illuminated visor vanity mirrors
- Dedicated side window defogging outlets and four-vane instrument panel outlets with complete shut off

2008 Saturn ASTRA

Cost of Ownership

The new ASTRA has exceptional quality and displays remarkable attention to detail. ASTRA builds on the best ideas and resources from around the world, designed and engineered in GM facilities in Brazil, Europe and in the United States. It is manufactured in Antwerp, Belgium, at the same assembly plant that produces the Opel ASTRA, one of the best-selling small cars in Europe.

Impressive Warranty Coverage

- 5-year/100,000-mile powertrain limited warranty.
- 3-year/36,000-mile bumper-to-bumper new vehicle limited warranty.
- Saturn's 24-hour roadside assistance program.
- Saturn Vehicle Exchange Program.

Vehicle Features

- Xenoy composite energy absorber behind front and rear bumpers provides 5 mph protection and reduces the chance of damage in low-speed collisions.
- Stainless steel exhaust system resists corrosion for longer life.
- Oil Life Monitor System keeps track of how the engine is being used and alerts the driver when oil and filter need replacement.
- Additional engine features that help reduce ownership costs:
 - Replaceable and recyclable cartridge oil filter (no need to replace complete filter housing).
 - Long-life coolant (5 years or 100,000 miles).
 - Low-friction roller cam followers and piston-cooling oil jets for long-term durability.
 - Coil-on-plug ignition module with 35,000-mile spark plugs.
 - Advanced electronic controls help ensure optimum performance over the life of the vehicle.
 - No scheduled maintenance on valvetrain components until 100,000 miles.

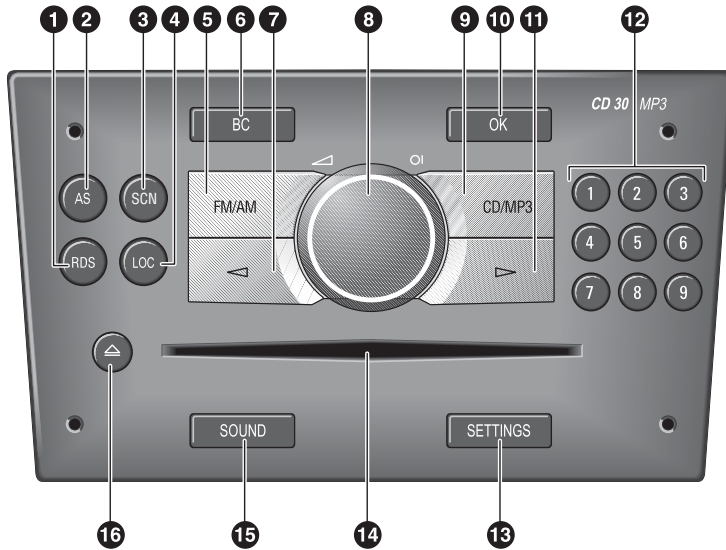
The Oil Life System calculates engine oil life based on vehicle use and "InSP" (which stands for "inspection") appears in the odometer display when it is necessary to change the oil and the oil filter cartridge. Under the best driving conditions, it is possible that the system might not indicate that an oil change is necessary for over a year. However, engine oil and the oil filter must be changed at least once a year. The Oil Life System should be reset to 100% only following an oil change. See section nine of the ASTRA Owner's Manual for more information.



2008 Saturn ASTRA Technology

The new ASTRA offers numerous advanced features and state-of-the-art audio systems that make traveling much more enjoyable. This level of technology is quite surprising in the small entry-level car market. It is critical that you take the time to learn how to properly operate these features so that you can effectively demonstrate them to customers.

It is important that you know how to use ASTRA's numerous features and can properly explain their operation to your customers, both during the selective presentation/demo drive and at delivery. Make sure you review the *ASTRA Owner's Manual* and *Audio Systems Quick Reference Guide* as well as the *Get to Know Your ASTRA Guide*. Also, watch the *ASTRA Launch Training DVD/CD-ROM* for video instructions on how to operate key features.



CD30/CD30 MP3 BUTTONS AND CONTROLS

1. RDS: Display the Radio Data System information (if available for currently tuned station)
2. AS: Press and hold to automatically locate the nine strongest radio stations and preset these into the Autostore memory
3. SCN: Play each preset radio station for five seconds (SCAN)
4. LOC: Change the radio station seek sensitivity ("Local On" for low sensitivity)
5. FM/AM: Switch to radio and toggle between wavebands (FM, FM-AS, AM and AM-AS)
6. BC: Board Computer (also known as the trip computer) including fuel consumption, average speed, distance traveled, range until empty and stopwatch
7. Left Arrow: Tune in radio stations (lower frequency), previous/rewind CD track and change menu values
8. Control Knob: Press to turn the audio system on or off, rotate to adjust volume
9. CD/MP3: Switch to CD player. Press twice to change CD display mode. Press three times and use arrow buttons to select random playback mode.
10. OK: Confirm selections and page forward in the menus
11. Right Arrow: Tune in radio stations (higher frequency), next/fast-forward CD track and change menu values
12. Preset radio stations. Press and hold a button to save currently tuned station. Can also manually store stations on the AS wavebands, but these will be replaced when Autostore is activated.
13. SETTINGS (Audio): Fader, balance, preset equalizer settings, speed-dependent volume control, OnStar volume and system on volume
SETTINGS (System): Date, time, radio-ignition on logic, language and units of measure
14. Slot for CD insertion
15. SOUND: Fader, balance, bass, treble and preset equalizer settings
16. Eject CD

Standard Audio Systems (CD30 and CD30 MP3)

- AM/FM stereo with CD player (XE)
- AM/FM stereo with CD player and MP3 disc playback (XR)
- Six speakers on XE; seven speakers on XR with an additional center ambience speaker providing better stereo imaging and fidelity
- Includes speed-dependent volume control, pre-set equalizer settings (Rock, Disco, Classic, Jazz and Vocal) and an Autostore (AS) function which automatically presets the nine-strongest radio stations into memory
- Total of up to 36 radio station presets with nine for each waveband (FM, FM Autostore, AM and AM Autostore)
- Buttons provide quick access to major functions and settings
- Stations, info and settings are displayed on the Driver Information Center

Standard Driver Information Center

- Mounted top and center of the instrument panel for excellent visibility
- In addition to audio system info, the DIC displays time, outside temperature, date, vehicle warnings and trip computer data (also called the Board Computer or "BC")
- Audio system controls or steering wheel-mounted controls are used to navigate through the various DIC functions and settings

2008 Saturn ASTRA Technology

Advanced Audio Package (PCU)

- Available on XR models
- CDC40 Opera AM/FM stereo with 6-disc CD changer and MP3 disc playback
- Improved clarity and greater power output with a premium 7-speaker sound system
- Adds a user-adjustable 7-band equalizer and position settings for optimizing the surround settings of the center ambience speaker for better stereo imaging in the driver's seat, both front seats or all seats
- Large multi-function control knob is used to navigate through and select menu items



Enhanced Driver Information Center

- Included in the Advanced Audio Package
- Menu-style graphical display provides access to audio settings and system settings including trip computer data (Board Computer)
- Dual trip computers (BC1 and BC2) can be reset separately to monitor different time periods
- In addition to total travel time, the timer function can track driving time excluding stops and driving time including stops with the engine running



CDC40 BUTTONS AND CONTROLS

1. Press to turn the audio system on or off, rotate to adjust volume
2. FM/AM: Switch to radio and toggle between wavebands (FM and AM)
3. CDC: Switch to CD changer
4. MAIN: Return to the main display
5. Multifunction Control Knob: Rotate to move forward and back among menu selections. Press to confirm/execute selections.
6. INFO: Display the audio and system settings and info
7. SOUND: Fader, balance, bass, treble, preset equalizer settings, position settings for the center speaker and graphic equalizer
8. BC: Board Computer including dual trip computers (BC1 and BC2) and displays for distance traveled, average speed, fuel consumption, average fuel consumption, range until empty and timer
9. Preset radio stations. Press and hold a button to save currently tuned station. 1–6 are also used to select the corresponding CD in the changer when in CDC mode
10. Slot for CD insertion
11. SETTINGS (Audio): Speed-dependent volume control, OnStar volume and system start-up volume
SETTINGS (System): Same as standard system plus display contrast and day/night mode
12. Arrows: Tune in radio stations (manual tune with up/down, seek with left/right) or select CD in changer (up/down) and next/previous CD track (left/right)
13. LOC: Change the radio station seek sensitivity ("Local" for low sensitivity)
14. Display CD Changer menu to load/eject discs from different compartments

Additional functions and settings are available through the various menus, including activation of the Autostore radio feature.

2008 Saturn ASTRA Technology

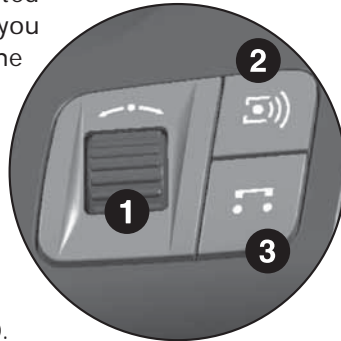
Make sure to point out to customers the location of the cruise control button on the back of the left multifunction lever. This and the other functions are conveniently located for fingertip control while driving so that you can keep your hands on the steering wheel.



Steering Wheel Controls (XR)

LEFT-SIDE CONTROLS

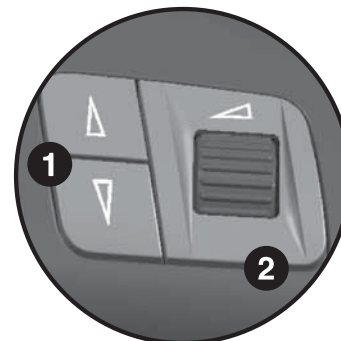
1. Rotate to scroll through menu items and push to make a selection.
 - CD30 or CD30 MP3 audio systems: Pressing the thumbwheel at any time displays the Board Computer where you can scroll through the different functions. Press and hold for two seconds to reset individual values. Press and hold for four seconds to reset all values.
 - CDC40 Opera audio system: Directly mimics the large multifunction control knob. All functions and settings can be accessed and adjusted using this control so that you can keep your hands on the steering wheel while driving.



2. Next stored radio station, restart CD, next MP3 album (if equipped) or next CD (with 6-disc changer).
3. Switch between radio and CD.

RIGHT-SIDE CONTROLS

1. Search radio stations, next/previous CD track, fast forward/rewind CD track.
2. Rotate to adjust audio system volume.

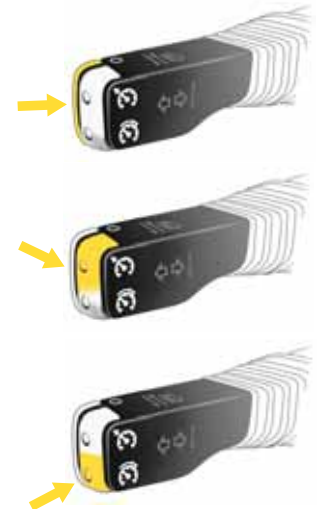


Turn Signals

- To signal a full turn, move the left multifunction lever all the way up or down. Note that the lever returns to center while the signal flashes. To cancel the signal, complete the turn or lightly tap the lever up or down.
- To signal a lane change, lightly move the lever part way until the signal starts to flash. The signal will automatically flash three times and then turn off.

Cruise Control

- Press and hold the button on the back of the left multifunction lever for about two seconds to turn cruise control on or off. The message "CC on" will briefly light in the odometer display.
- Press the top button to set and maintain the current speed. The cruise control icon will light on the gauge cluster. This button will also increase the set speed by about 1 mph each time it is pressed.
- Press the bottom button to resume a set speed after cruise control has been disengaged*. This button will also decrease the set speed by about 1 mph each time it is pressed.



* Cruise control will disengage if you apply the brakes, shift into neutral on the automatic transmission, engage the clutch on the manual transmission or drop below about 19 mph.



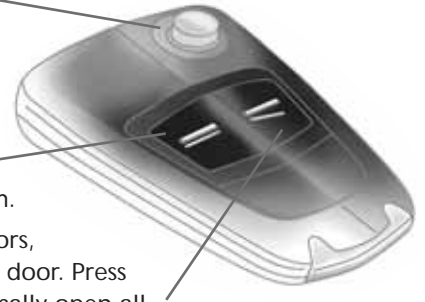
RainSense Windshield Wipers and Rear Wiper/Washer

- Tap the **right** multifunction control lever down for a single wipe of the windshield to remove mist (hold for multiple wipes).
- Tap the **right** multifunction control lever up one position from off to activate the RainSense intermittent setting. A sensor mounted on the windshield detects moisture and automatically adjusts the frequency of the wipers according to weather conditions.
- Low- and high-speed wipe settings are activated by moving the lever up farther to those settings, once for low and twice for high.
- To clean the windshield, pull the lever back toward you (pull and hold if additional spray/wipe cycles are needed).
- To turn the windshield wipers off, tap the lever downward past the mist detent. Make sure the wipers are off and not in the RainSense mode when going through a car wash.
- To turn the **rear wiper** on or off, push the lever forward part way. To clean the rear window, push the lever completely forward and hold (it may take a moment for washer fluid to reach the rear since it uses the same reservoir as the front wipers). The rear wiper automatically activates when the front wipers are on and you shift into reverse.

Make sure to point out to customers that the windshield wiper lever returns to its resting position after any setting has been selected. You can tap the lever up or down to move between the different settings (off, RainSense, low-speed wipe and high-speed wipe). For example, tap downward once to move from high-speed to low-speed wipe and then downward again for RainSense.

Remote Keyless Entry and Express-Down Windows

- Press to extend or fold the vehicle key.
- Press once to lock all doors, liftgate and fuel filler. Press twice to activate content theft-deterrent system.
- Press to unlock all doors, liftgate and fuel filler door. Press and hold to automatically open all power windows to quickly cool the car down on a hot day.



Central Locking System

- Operates the power door locks with single switch on the instrument panel just below the DIC.
- Locks or unlocks all doors, liftgate and fuel filler door.

2008 Saturn ASTRA

Competitive Comparisons

VW Rabbit Overview

Volkswagen resurrected the Rabbit name at the end of 2006 for the U.S.-version of the next generation Golf hatchback.



A popular model from 1975–1984, the Rabbit gained a cult-like following with its nimble, fuel-efficient and versatile performance. VW is hoping to take advantage of this nostalgia with a new model that claims to deliver premium European characteristics at an affordable sticker price. It is ASTRA's most direct competitor and the only true European hatchback in the segment. In fact, Opel ASTRA and the VW Golf are the two top selling vehicles in their segment in Europe.

- 2-Door or 4-Door hatchback (VW's nomenclature for 3-Door or 5-Door)
- No trim level designations
- 2007 Rabbit MSRP*: \$15,620 (2-Door), \$17,730 (4-Door)

Honda Civic Overview

Honda Civic is the volume leader of the small car segment, largely due to its low price of entry and economical operation. It is offered as either a 4-Door Sedan or a 2-Door Coupe; there is no hatchback version. However, it is still considered a key ASTRA competitor in terms of content, pricing and sales. Redesigned in 2006, the latest Civic tries to be all things to all small-car buyers by offering numerous models and trim levels. Though considered a benchmark by many, it cannot match ASTRA's upscale European refinement and driving dynamics.



- 2-Door Coupe or 4-Door Sedan (no hatchback)
- Mainstream models include DX, LX and EX trim levels
- 2007 Civic Coupe MSRP*: \$15,405 (DX), \$17,355 (LX) and \$19,305 (EX)
- 2007 Civic Sedan MSRP*: \$15,605 (DX), \$17,555 (LX) and \$19,305 (EX)
- Specialty models include the performance-oriented Si, Hybrid and natural gas-powered GX (these are not included in this comparison)

Mazda3 Overview

With the tag line "the soul of a sports car," Mazda would have you believe that their vehicles are more German than Japanese in heritage. Admittedly, in the small car segment the Mazda3 does have a sporty appearance and spirited performance that is lacking in many competitors. But even though it emulates a European design it still cannot measure up to a genuine article like ASTRA. And premium features such as heated seats, head-curtain air bags and rain-sensing wipers are only offered on the uplevel trims.



- 4-Door sedan or 5-Door hatchback (only the 5-Door is considered direct competition for the ASTRA)
- s Sport, s Touring and s Grand Touring trim levels for the 5-Door
- 2008 Mazda3 5-Door MSRP*: \$18,520 (s Sport), \$19,020 (s Touring) and \$20,490 (s Grand Touring)
- Expensive performance-oriented Mazdaspeed3 model also available (not included in this comparison)

* Manufacturer Suggested Retail Price including destination and freight charges.

2008 Saturn ASTRA vs. Volkswagen Rabbit

Competitive Comparisons

ASTRA vs. VW Rabbit

EXTERIOR DESIGN & STYLING

- **More distinctive styling.** ASTRA has a much sportier appearance, especially on the more rakish 3-Door. Rabbit's boxy, traditional hatchback look provides nothing to distinguish its two body styles other than counting doors.
- **Larger standard wheels.** Rabbit comes standard with 15" steel wheels and larger alloy wheels are available as options or dealer-installed. ASTRA starts with 16" wheels on 5-Door (steel on XE, alloy on XR) and 17" alloy wheels on the 3-Door with 18" available.
- **Projector beam fog lamps.** These are standard on ASTRA XR. Rabbit does not offer fog lamps.
- **Automatic headlamp control.** Standard on every ASTRA but not available on Rabbit.
- **Remote power locking fuel filler door.** Standard on every ASTRA but not available on Rabbit.

PERFORMANCE, RIDE & HANDLING

- **Standard StabiliTrak on ASTRA 3-Door.** Electronic stability control costs extra on both Rabbit 2-Door and 4-Door.
- **More fuel efficient.** ASTRA has better fuel economy (estimated).
- **Larger standard tires.** ASTRA's P205/55R16 (5-Door) and P225/45R17 (3-Door) tires are both larger in diameter and wider than Rabbit's P195/65R15 tires for improved road-gripping traction.

SAFETY & SECURITY

- **OnStar with one-year Safe & Sound Plan.** This standard ASTRA feature is not available on Rabbit at any price.
- **Tire Pressure Monitor.** This is standard on ASTRA, but costs extra on Rabbit for 2007 (will be standard in 2008).
- **Front side-impact air bags with thorax and pelvic protection.** Rabbit's seat-mounted side-impact air bags only provide thorax protection.
- **Pedal Release System.** Rabbit does not offer this standard ASTRA feature.
- **Active front head restraints.** Rabbit does not offer this standard ASTRA feature.



COMFORT & CONVENIENCE

- **Leather seating surfaces.** Available on ASTRA XR as part of the Premium Trim Package. Rabbit does not offer leather seats.
- **Overhead sunglass holders.** Standard on ASTRA but only available on Rabbit 4-Door in the overhead console included with the optional sunroof.
- **Dual panel sunroof.** Available on ASTRA 5-Door, this surprisingly large sunroof includes a power-operated mesh sunshade. Rabbit 4-Door only offers a much smaller sunroof with a manual sunshade.

COST OF OWNERSHIP

- **Oil Life System.** Standard ASTRA feature monitors engine usage to determine oil/filter change interval (not just mileage based). Not available on Rabbit.
- **Longer powertrain limited warranty.** ASTRA's 5-year/100,000-mile warranty lasts 40,000 miles longer than Rabbit's coverage.

TECHNOLOGY

- **RainSense windshield wipers.** Standard on every ASTRA, but not available on Rabbit.
- **Driver Information Center with trip computer.** Rabbit does not offer this standard ASTRA feature.
- **Steering wheel-mounted controls.** Standard on ASTRA XR. Rabbit does not offer any steering wheel-mounted controls.
- **Center ambience speaker.** Included on ASTRA XR for improved sound quality, but not available on Rabbit.
- **Remote express-down windows.** Lower all of ASTRA's windows with one touch of the key fob. Not available on Rabbit.
- **OnStar Turn-by-Turn Navigation.** Available on every ASTRA for a modest upgrade fee (see page 11 for details). Rabbit does not offer a navigation system of any kind.

2008 Saturn ASTRA vs. Honda Civic

Competitive Comparisons



ASTRA vs. Honda Civic (DX, LX and EX)

EXTERIOR DESIGN & STYLING

- **Sporty and youthful hatchback styling.** ASTRA is much sportier looking, especially on the more rakish 3-Door. Civic is only offered in Coupe and Sedan body styles. A hatchback is not available.
- **Larger available wheels.** Civic is only available with 15" (DX) or 16" (LX and EX) wheels. 17" wheels are available on ASTRA 5-Door and standard on 3-Door. 18" wheels are available on ASTRA 3-Door.
- **Projector beam fog lamps.** These are standard on ASTRA XR. Civic does not offer fog lamps.
- **Side repeater lights.** Civic does not provide a similar feature.
- **Heated outside rearview mirrors.** Standard on every ASTRA but not available on Civic.
- **Automatic headlamp control.** Standard on every ASTRA but not available on Civic.
- **Remote power locking fuel filler door.** Standard on every ASTRA but not available on Civic.

PERFORMANCE, RIDE & HANDLING

- **StabiliTrak – Electronic stability control with traction control.** Standard on ASTRA 3-Door and available on every ASTRA 5-Door. Electronic stability control and traction control are not available on Civic.
- **Winter mode on auto transmission.** Civic does not offer a similar feature on its automatic transmission.
- **Larger available tires.** ASTRA's available tires are both larger in diameter and wider than Civic's tires for improved road-gripping traction. And Civic offers nothing like ASTRA 3-Door's available 18" wheels with summer performance tires.

SAFETY & SECURITY

- **OnStar with one-year Safe & Sound Plan.** This standard ASTRA feature is not available on Civic at any price.
- **Four-wheel disc brakes.** Standard on every ASTRA for improved fade resistance, Civic DX and LX have front disc and rear drum brakes.
- **Tire Pressure Monitor.** This is standard on ASTRA, but not available on Civic.
- **Front side-impact air bags with thorax and pelvic protection.** Civic's seat-mounted side-impact air bags only provide thorax protection.
- **Pedal Release System.** Civic does not offer this standard ASTRA feature.

COMFORT & CONVENIENCE

- **Versatile hatchback design.** Civic only offers trunk storage, lacking ASTRA's much more versatile and capable hatchback design.

- **60/40 split-folding rear seats.** Standard on every ASTRA, Civic only offers a split-folding trunk pass-through on the top EX model.
- **More rear-seat leg room.** ASTRA 3-Door has nearly 5" of additional rear leg room than Civic Coupe.
- **Leather seating surfaces.** Available on ASTRA XR as part of the Premium Trim Package. Civic does not offer leather seats (will be available on the 2008 Civic EX).
- **Heated front seats.** Available on ASTRA with either cloth or leather seats. Not available on Civic (will be included with optional leather seats on the 2008 Civic EX).
- **Overhead sunglass holders.** Standard on ASTRA, but not available on Civic.
- **Dual-panel sunroof.** Available on ASTRA 5-Door, this surprisingly large sunroof includes a power-operated mesh sunshade. A sunroof is only included on the top-of-the-line Civic EX and is much smaller with a manual sunshade.

COST OF OWNERSHIP

- **Oil Life System.** Standard ASTRA feature monitors engine usage to determine oil/filter change interval (not just mileage based). Not available on Civic.
- **Longer powertrain limited warranty.** ASTRA's 5-year/100,000-mile warranty lasts 40,000 miles longer than Civic's coverage.

TECHNOLOGY

- **RainSense windshield wipers.** Standard on every ASTRA, but not available on Civic.
- **Driver Information Center with trip computer.** Civic does not offer this standard ASTRA feature.
- **Steering wheel-mounted controls.** Standard on ASTRA XR. Civic only provides steering wheel-mounted audio controls on the top EX model.
- **Center ambience speaker.** Included on ASTRA XR for improved sound quality, but not available on Civic. Also, Civic DX and LX only offer four speakers compared to ASTRA XE with six speakers and ASTRA XR with seven speakers.
- **Remote express-down windows.** Lower all of ASTRA's windows with one touch of the key fob. Not available on Civic.
- **OnStar Turn-by-Turn Navigation.** Available on every ASTRA for a modest upgrade fee (see page 11 for details). Civic only offers navigation on the top EX model at a cost of \$1,750.

2008 Saturn ASTRA vs. Mazda3

Competitive Comparisons

ASTRA vs. Mazda3 5-Door

EXTERIOR DESIGN & STYLING

- **Sportier 3-Door hatchback.** ASTRA offers a much sportier and more rakish looking 3-Door model. Mazda3 is only offered as a traditional 4-Door sedan or a 5-Door hatchback.
- **Projector beam fog lamps.** These are standard on ASTRA XR. Mazda3 has standard reflector-style fog lamps.
- **Heated outside rearview mirrors.** Standard on every ASTRA but not available on Mazda3.
- **Remote power locking fuel filler door.** Standard on every ASTRA but available on Mazda3.

PERFORMANCE, RIDE & HANDLING

- **StabiliTrak – Electronic stability control with traction control.** Standard on ASTRA 3-Door and available on every ASTRA 5-Door. Electronic stability control and traction control are only included on the uplevel Mazda3 s Touring and s Grand Touring models.
- **Winter mode on auto transmission.** Mazda3 does not offer a similar feature on its automatic transmission.
- **Better fuel economy.** ASTRA edges out Mazda3 in fuel economy (estimated).
- **Larger available tires.** ASTRA 5-Door's available P225/45R17 tires are wider than Mazda3's P205/50R17 tires for improved road-gripping traction.

SAFETY & SECURITY

- **OnStar with one-year Safe & Sound Plan.** This standard ASTRA feature is not available on Mazda3 at any price.
- **Front side-impact air bags with thorax and pelvic protection.** Mazda3's seat-mounted side-impact air bags only provide thorax protection.
- **Pedal Release System.** Mazda3 does not offer this standard ASTRA feature.
- **Active front head restraints.** Mazda3 does not offer this standard ASTRA feature.
- **Daytime Running Lamps.** Mazda3 does not offer this standard ASTRA feature.
- **Head-curtain and side-impact air bags.** These standard ASTRA features are only included on Mazda3's upper trim levels.



COMFORT & CONVENIENCE

- **Heated front seats.** Available on ASTRA with either cloth or leather seats. Only included on the top-of-the-line Mazda3 s Grand Touring model.
- **Overhead sunglass holders.** Standard on ASTRA, but not available on Mazda3.
- **Dual panel sunroof.** Available on ASTRA 5-Door, this surprisingly large sunroof includes a power-operated mesh sunshade. Mazda3 only offers a much smaller sunroof with a manual sunshade.

COST OF OWNERSHIP

- **Oil Life System.** Standard ASTRA feature monitors engine usage to determine oil/filter change interval (not just mileage based). Not available on Mazda3.
- **Longer powertrain limited warranty.** ASTRA's 5-year/100,000-mile warranty lasts 40,000 miles longer than Mazda3's coverage.

TECHNOLOGY

- **RainSense windshield wipers.** Standard on every ASTRA, but only included on the top-of-the-line Mazda3 s Grand Touring model.
- **Driver Information Center with trip computer.** Standard on every ASTRA, but only included on the top-of-the-line Mazda3 s Grand Touring model.
- **Center ambience speaker.** Included on ASTRA XR for improved sound quality, but not available on Mazda3.
- **MP3-formatted CD playback.** Included on ASTRA XR, but only available on Mazda3 with the optional CD changer.
- **Remote express-down windows.** Lower all of ASTRA's windows with one touch of the key fob. Not available on Mazda3.
- **OnStar Turn-by-Turn Navigation.** Available on every ASTRA for a modest upgrade fee (see page 11 for details). Mazda3 only offers navigation on the top s Grand Touring model at a cost of \$1,750.

2008 Saturn ASTRA

Specifications Comparison

| | 2008 SATURN ASTRA 3-DOOR/5-DOOR | 2007 VW RABBIT 2-DOOR/4-DOOR | 2008 MAZDA3 5-DOOR | 2007 HONDA CIVIC COUPE/SEDAN |
|---|---|---|--|--|
| MSRP (including destination) | \$15,995 (XE 5-Door) \$17,545 (XR 5-Door) \$18,495 (XR 3-Door) | \$15,620 (2-Door) \$17,730 (4-Door) | \$18,520 (s Sport) \$19,020 (s Touring) \$20,490 (s Grand Touring) | \$15,405/\$15,605 (DX) \$17,355/\$17,555 (LX) \$19,305 (EX) |
| PERFORMANCE | | | | |
| Engine | 1.8L 4-cylinder Valvetrain DOHC 16-valve w/ VVT | 2.5L 5-cylinder DOHC 20-valve | 2.3L 4-cylinder DOHC 16-valve w/ VVT | 1.8L 4-cylinder SOHC 16-valve w/ VVT |
| Horsepower @ rpm | 140 @ 6300 | 150* @ 5000 | 156 @ 6500 | 140 @ 6300 |
| Torque (lb.-ft.) @ rpm | 126 @ 3800 | 170 @ 3750 | 150 @ 4500 | 128 @ 4300 |
| Standard transmission | 5-speed manual | 5-speed manual | 5-speed manual | 5-speed manual |
| Available transmission | 4-speed auto. w/ neutral idle and winter mode | 6-speed auto. Tiptronic® | 5-speed auto. | 5-speed auto. |
| FUEL ECONOMY, CITY/HWY (MPG ADJUSTED FOR 2008 MODEL YEAR EPA CALCULATIONS) | | | | |
| Manual transmission | TBD | 19/28* | 22/29 | 26/34 |
| Auto transmission | TBD | 19/28* | 22/29 | 25/36 |
| Fuel tank (gallons) | 12.0 | 14.5 | 14.5 | 13.2 |
| SUSPENSION, STEERING & BRAKES | | | | |
| Electronic Stability Control | S (3-Door); A (5-Door) | A | S (s Touring and s Grand Touring only) | N/A |
| Suspension, front | MacPherson strut w/ stabilizer bar | MacPherson strut w/ stabilizer bar | MacPherson strut w/ stabilizer bar | MacPherson strut w/ stabilizer bar |
| Suspension, rear | Torsion beam axle w/ coil springs | 4-link w/ coil springs and stabilizer bar | Multi-link w/ coil springs and stabilizer bar | Multi-link w/ coil springs and stabilizer bar (on all except DX Coupe) |
| Power-Assisted Steering | Electro-hydraulic rack-and-pinion w/ variable effort std. on XR, avail. on XE | Electro-mechanical rack-and-pinion w/ variable assist | Electro-hydraulic rack-and-pinion w/ variable assist | Rack-and-pinion |
| Brakes | 4-wheel disc w/ ABS | 4-wheel disc w/ ABS | 4-wheel disc w/ ABS | Front disc/rear drum (DX and LX) or 4-wheel disc (EX) w/ ABS |
| EXTERIOR DIMENSIONS (IN.) | | | | |
| Wheelbase | 102.9 | 101.5 | 103.9 | 104.3 (coupe); 106.3 (sedan) |
| Overall length | 170.5 | 165.8 | 176.8 | 174.8 (coupe); 176.7 (sedan) |
| Overall width | 69.0 | 69.3 | 69.5 | 68.9 (coupe); 69.0 (sedan) |
| Overall height | 55.8 (3-Door); 57.4 (5-Door) | 58.2 | 57.7 | 53.5 (coupe); 56.5 (sedan) |
| Track, front/rear | 58.6/58.6 | 60.6/59.8 | 60.4/60.2 | 59.0/60.1 (coupe); 59.0/60.2 (sedan) |
| INTERIOR DIMENSIONS (FRONT/REAR) | | | | |
| Head room (in.) | 37.8/36.6 (3-Door); 38.9/38.3 (5-Door) | 39.3/38.5 (2-Door and 4-Door) | 39.1/38.4 | 38.0/35.1 (coupe); 39.4/37.4 (sedan) |
| Leg room (in.) | 42.3/35.0 (3-Door); 42.0/35.3 (5-Door) | 41.2/35.3 (2-Door and 4-Door) | 41.1/36.3 | 42.6/30.3 (coupe); 42.2/34.6 (sedan) |
| Shoulder room (in.) | 53.9/52.7 (3-Door); 53.9/52.8 (5-Door) | 54.7/54.6 (2-Door and 4-Door) | 54.9/54.0 | 53.9/52.1 (coupe); 53.7/52.4 (sedan) |
| Hip room (in.) | 51.3/51.0 (3-Door); 51.8/51.4 (5-Door) | Info not available | 53.8/52.5 | 53.0/49.2 (coupe); 51.9/51.0 (sedan) |
| CARGO VOLUME | | | | |
| Rear seats, up (cu. ft.) | 12.0 (3-Door); 12.2 (5-Door) | 15.0 (2-Door and 4-Door) | 17.1 (5-Door) | 11.5 (coupe); 12.0 (sedan) |
| Rear seats, down (cu. ft.) | 37.8 (3-Door); 44.7 (5-Door) | 46.0 (2-Door and 4-Door) | 43.8 (5-Door) | Not Applicable |

* VW Rabbit's engine for the 2008 model year will produce 170 hp and fuel economy is 22/29 city/hwy (manual) and 21/29 city/hwy (automatic).

2008 Saturn ASTRA

Features Comparison



2008 SATURN ASTRA
5-DOOR XR



2007 VW RABBIT
4-DOOR



2008 MAZDA3
5-DOOR s TOURING



2007 HONDA CIVIC
SEDAN LX

EXTERIOR DESIGN & STYLING

| | | | | |
|---------------------------------------|--------------------|---------------------|---------------|---------------------|
| Auto headlamp control | S | N/A | N/A | N/A |
| Fog lamps | S (projector beam) | N/A | S (reflector) | N/A |
| Side marker lights | S | S (on mirrors) | S | N/A |
| Power heated outside rearview mirrors | S | S | N/A | N/A |
| Remote power locking fuel filler door | S | N/A | N/A | N/A |
| Standard wheels | 16" alloy | 15" steel w/ covers | 17" alloy | 16" steel w/ covers |

COMFORT & CONVENIENCE

| | | | | |
|--|--|------------------|--------------------|-----|
| Air conditioning w/ filter | S | S | S | S |
| Leather seating surfaces | A | N/A | A | N/A |
| Heated seats | A (w/ cloth and leather) | S | N/A | N/A |
| Leather-wrapped steering wheel | A | N/A | S | N/A |
| 60/40 split-folding rear seat | S | S | S | N/A |
| Sunglass holders, front | S | A (w/ sunroof) | N/A | N/A |
| Sunroof | A (dual panel w/ power-operated mesh sunshade) | A (single panel) | A (single panel) | N/A |
| Rain-sensing windshield wipers | S | N/A | N/A | N/A |
| Remote express-down windows | S | N/A | N/A | N/A |
| Steering wheel-mounted audio controls | S (including DIC controls) | N/A | S | N/A |
| Driver Information Center (w/ trip computer) | S | N/A | N/A | N/A |
| Oil Life Monitor System | S | N/A | N/A | N/A |
| CD player with MP3 playback capability | S | S (6-CD changer) | A (w 6-CD changer) | S |
| Center ambience speaker | S | N/A | N/A | N/A |
| Navigation system | A (OnStar Turn-by-Turn) | N/A | N/A | N/A |

SAFETY & SECURITY

| | | | | |
|---|---|-----------------|-----------------|-----------------|
| OnStar | S | N/A | N/A | N/A |
| Tire pressure monitor system | S | A | S | N/A |
| Dual-stage front air bags w/ Passenger Sensing System | S | S | S | S |
| Head-curtain side-impact air bags | S | S | S | S |
| Front seat-mounted thorax/pelvic air bags | S | S (thorax only) | S (thorax only) | S (thorax only) |
| Active front head restraints | S | N/A | N/A | S |
| Pedal release system | S | N/A | N/A | N/A |
| LATCH child seat anchors | S | S | S | S |
| Front safety belt pretensioners | S | S | S | S |
| Rear door child security locks | S | S | S | S |
| 5-mph front and rear bumpers | S | S | S | S |

WARRANTY (YEARS/MILES)

| | | | | |
|---------------------------------|-----------|-------------|----------|----------|
| Bumper-to-bumper | 3/36,000 | 4/50,000 | 3/36,000 | 3/36,000 |
| Powertrain | 5/100,000 | 5/60,000 | 5/60,000 | 5/60,000 |
| Roadside assistance | 5/100,000 | 4/unlimited | 3/36,000 | A |
| 30-day vehicle exchange program | S | N/A | N/A | N/A |

S = Standard A = Available N/A = Not Available

This material is not legally approved for use in any advertising. It is intended for use by dealership employees only and is not to be disseminated to, or reviewed by, consumers. Information contained herein is designed to be as comprehensive and factual as possible. General Motors reserves the right, however, to make changes at any time, without notice, in materials, equipment, specifications, models and availability.

Competitive vehicle information based on 2007 or 2008 models. Competitive information in this book gathered from sources published by competitive manufacturers.

Copyright 2007 General Motors Corporation. All Rights Reserved. No portion of this work may be reproduced, rebroadcast or redistributed, in whole or in part, without the express written permission of General Motors Corporation.

Printed in U.S.A. September 2007

Course Number: BSAAS.08P

SKU Number: BSAAS08P

 **TRAINING**

