



swisherinc.com

OWNER'S MANUAL

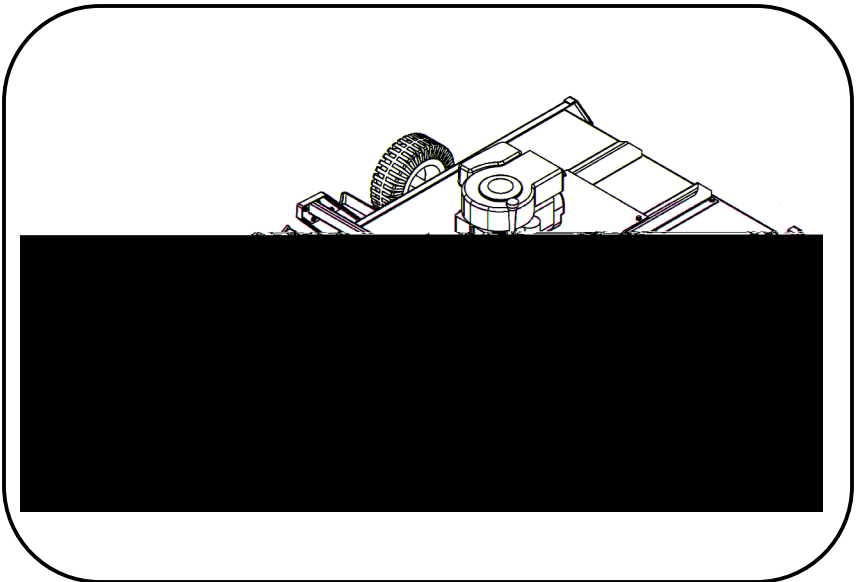
MODEL NO.

RTB115441

RTB14544

CAUTION:
Read and follow all
Safety Rules and
Instructions before
operating this
Equipment

Rev. 04- 357



44" ROUGH CUT TRAIL CUTTER

Assembly
Operation
Service and Adjustment
Repair Parts



1602 CORPORATE DRIVE, P.O. BOX 67, WARRENSBURG, MISSOURI 64093
PHONE (660) 747-8183 FAX (660) 747-8650

Manufacturing quality lawn care equipment since 1945

Made In The

USA

LIMITED WARRANTY

THIS WARRANTY DOES NOT APPLY TO ANY INCIDENTAL OR CONSEQUENTIAL DAMAGES AND ANY IMPLIED WARRANTIES ARE LIMITED TO THE SAME TIME PERIODS STATED HEREIN FOR ALL EXPRESSED WARRANTIES

TABLE OF CONTENTS



SAFETY PRECAUTIONS



This Safety Alert Symbol indicates important messages in this manual. When you see this symbol, carefully read the message that follows and be alert to the possibility of personal injury.

Read this manual completely. This machine can amputate hands and feet, and throw objects. Failure to observe the following safety instructions could result in serious injury or death.

ASSEMBLY

OPERATING YOUR TRAILCUTTER



CAUTION!

where you last saw them.

Never assume that children will remain

INTENDED USE

It is not intended to create a finish cut on lawns

ATTACHING TRAILCUTTER TO TOW VEHICLE

TRANSPORTING CUTTER

STARTING THE ENGINE

See engine manufacturer's recommendations for the type and amount of oil and fuel used.

ENGAGING BLADES

Note:

‘ ENGAGED ’

See detail on page 14 figure – 8

STOPPING THE ENGINE

-

BREAKING IN YOUR CUTTER



CAUTION: SHUT OFF THE CUTTER ENGINE AND REMOVE SPARK PLUG WIRE FROM SPARK PLUG BEFORE MAKING ANY ADJUSTMENTS TO THE CUTTER.

FRONT TO BACK ADJUSTMENT

1/2

See figure – 2, page 11

CUTTER HEIGHT ADJUSTMENT

TOW HITCH OFFSET

see figure – 2,3 page 11

STARTING TO CUT

see figure-8 page 14

STOPPING THE CUTTING SESSION

SUGGESTED CUTTING PRACTICES

GENERAL RECOMMENDATIONS

BEFORE EACH SEASON

BEFORE EACH USE

figure -4 page 12

DAILY MAINTENANCE

GENERAL TROUBLESHOOTING

The unit is not cutting level.

The engine will not start.

Engine runs poorly.

Cutter bounces excessively while towing.



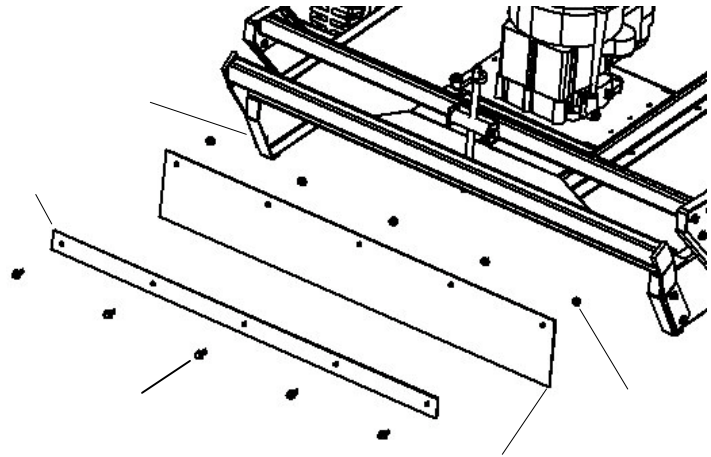
IF PROBLEMS PERSIST HAVE A QUALIFIED MECHANIC SERVICE THE CUTTER. NEVER ATTEMPT TO MAKE AN ADJUSTMENT THAT YOU ARE NOT SURE IS CORRECT. DOING SO CAN CAUSE OTHER PROBLEMS.



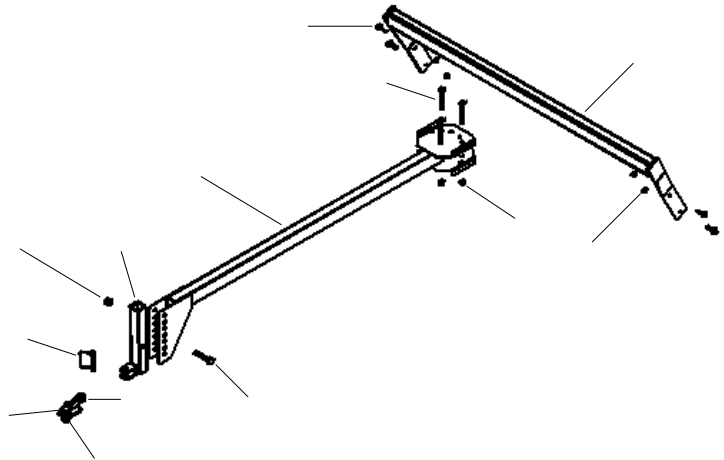
SAFETY AND OPERATIONAL DECALS



Item #	Description	Part #
1	5/16-18 X 1 HCC GR5 ZP	NB501
2	Metal Strap For Rubber Flap	4853TC
3	Rubber Flapper	10384
4	5/16-18 Nylock Nut	NB181
5	Deck Weldment	10357TC

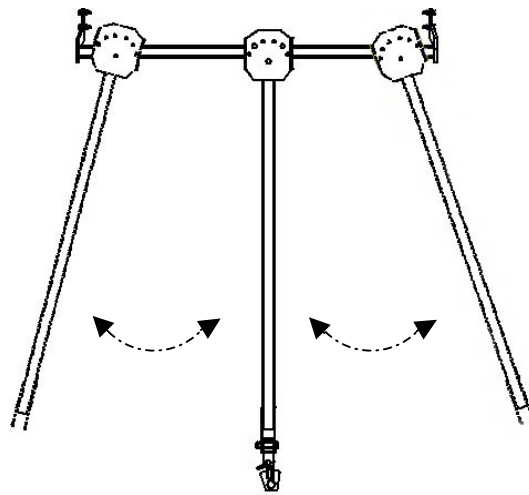


Item #	Description	Part #
1	Hitch Bar	10339TK
2	3/8" -16 x 3" GR.5 BOLT	NB164
3	L-Hitch	10388TK
4	5/8"-11 X 1-1/2" Bolt	NB145Z
5	5/8"-11 Nylock Nut	NB561
6	3/8"-16 Nylock Nut	NB182
7	1/2"-13 X 2-1/2" GR.5 Bolt	NB510
8	1/2"-13 Nylock Nut	NB281
9	Safety Hitch Pin	H11
10	Swivel Hitch	H10TK
11	Lift Bar Weldment	10369TK
12	5/16"-18 X 1-1/4" Serr Flng.BOLT	10548
13	5/16"-18 Nylock Nut	NB181



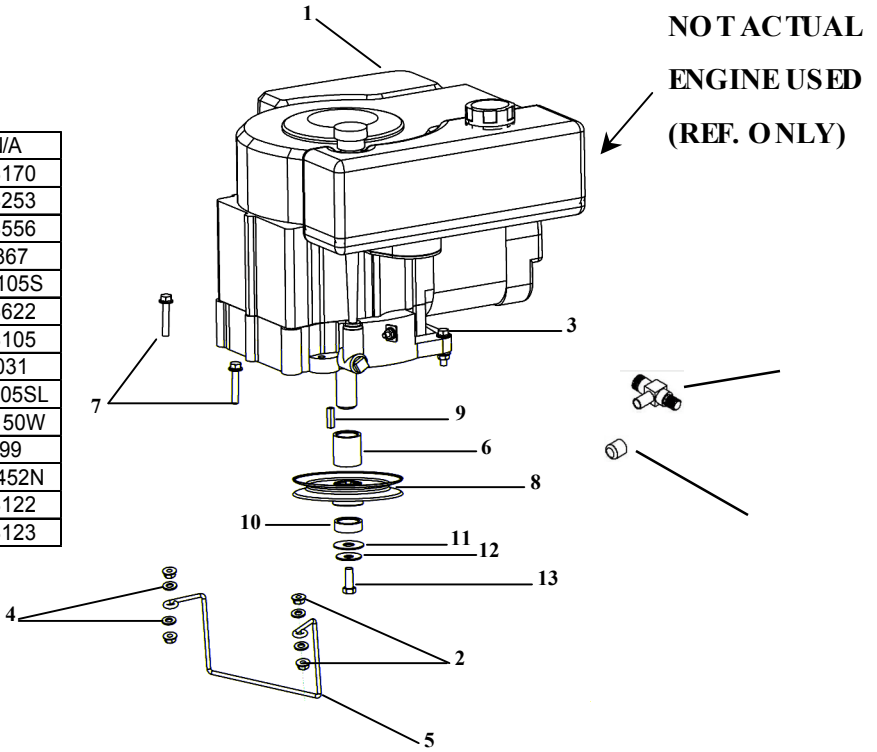
See text on page-7 (TOW
HITCH OFFSET)

OFFSET MOWER
TO RIGHT OF TOW VEHICLE

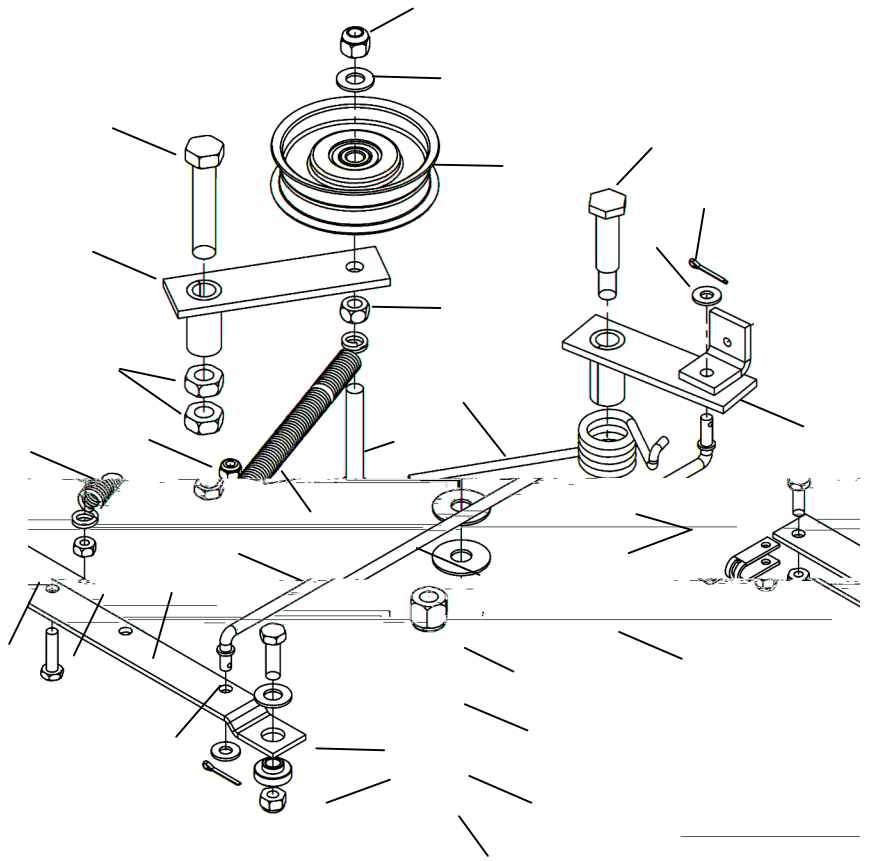


OFFSET MOWER
TO LEFT OF TOW VEHICLE

	Engine B&S 12V St W/Gas Tank	N/A
2	5/16-18 Serrated Flange Nut	NB170
3	5/16"-18 X 1 1/4" Serrated Flange Bolt	NB253
4	5/16" USS Flat Washer ZP	NB556
5	RT44 Belt Guide	4867
6	Spacer For Engine Pulley	BB105S
7	5/16"-18 X 2 1/4 "Flang Serr. GR5 ZP	NB622
8	Engine Pulley- 4.25"OD, 1 1/4" ID	BB105
9	1/4" X 1" Key Stock	9031
10	Spacer Lower For Engine Pulley	BB105SL
11	Washer	TR150W
12	Washer Belleville Engine Pulley	699
13	7/16"-20 X 1 HCF GR5 ZP	NB452N
14	Oil Drain Valve	AS122
15	Oil Drain Cap	AS123



Item #	Description	Part #
1	1/2"-13 X 2 1/2" HCC GR5 ZP	NB510
2	Idler Arm	6681TK
3	1/2"-13 2-Way Jam Lock Nut	NB121
4	1/4"-20 Nylok Nut	NB180
5	1/4"-20 X 3/4" GR5 ZP	NB250
6	Clutch Cable Clevis	9023mod
7	Belt Engage Arm	4898TK
8	1/4"-20 X 1" HCC GR5 ZP	NB102
9	1/4" SAE Washer	NB274
10	5/64" X 3/4" Cotter Pin	NB519
11	5/16"-18 Nyloc Nut	NB181
12	Spacer	B99S
13	3/8" Hardened Washer	NB196
14	5/16"-18 X 1" HCC GR5 ZP	NB501
15	3/8-16 Nyloc Nut	NB182
16	Washer Belleville	699
17	Brake Arm Assembly	4893
20	1/2" X 1-9/16" Shoulder Bolt	NB220
21	Torsion Brake Spring	9040
22	Brake Rod	4891TK
23	1/4"-20 HX Nut ZP	NB139
24	Clutch Rod Spring	682S
25	3/8"-16 X 2 1/2" HTC GR5 ZP	NB619
26	3/8"-16 HNC GR2 ZP	NB212
27	Idler Pulley OD-3.25", ID-3/8"	B527
28	3/8" SAE Washer	NB272
29	3/8"-16 Nyloc Nut	NB182



REPAIR PARTS

d
a

Item #	Description	Part #
Not Shown	M6-1.0 Nut Yellow Zinc	NB600
Not Shown	Solenoid Assembly	9043
Not Shown	Battery Hold Down, 15" Tarp Strap	BHOLD
Not Shown	Battery Cable (Black 10")	BCS
Not Shown	Battery Cable (10" Red)	BCSR
Not Shown	Battery Cable Small Rubber Boot	BCBT
Not Shown	Battery Pad	BATPAD
Sold Separately	Battery (U1R)	N/A
Not Shown	12 volt Wiring Harness (Engine)	WHRT44-2
Not Shown	12 volt Wiring Harness (Console)	10299



swisherinc.com

OWNER'S MANUAL

MODEL NO.

RTB115441

RTB14544

44" ROUGH CUT TRAILCUTTER

SWISHER MOWER & MACHINE CO., INC.

