

### Digital Camera Specifications

Image sensor	2.0 Mega pixels, CMOS sensor
Lens	300mm(8X)
Field of View	7"-8"
Image Resolution (Still Image)	HI -2048x1536 (3.1) MI -1600x1200 (2.0) LO -640x480 (0.3)
Video Resolution	320x240, 12 Fps AVI format
Image Capacity	HI 36 P MI 46 P LO 250 P (*Upon 16MB Flash Memory)
Image Type	MPEG format
Video measure	6-8 min
Digital Zoom	4 X
Exposure	Auto / Manual Mode
White Balance	Auto
Memory	Built-in 16MB Flash Memory SD/MMC card socket expandable
LCD open angle	0° / 105°
Language select	English
Interface	USB 1.1
TV-out	NTSC / PAL
Power Source	1.5V AAA alkaline battery x 4

### Binocular specifications

Size	8 x 32 mm
Field of View	Field of View 5.6° Field of view : 92.7m(304 ft) at 914m(1000 YDS)
Exit pupil	4.0 mm
Close Focusing	3.5 m
Eye Relief	12.5 mm
Coatings	Multi coating on the first surface. Single layer for other surface, fully coated.

### Package Contents

USB Cable	x 1
User Guide	x 1
Video Cable	x 1
Software CD	x 1
Pouch	x1
Binocular Dimensions	156mm x 102mm x 60mm(LCD Close)

#### System Requirements:

- |   |                                   |
|---|-----------------------------------|
| 1. Window 98/ 98SE/ ME/ 2000/ XP  | 5. CD-ROM                         |
| 2. The processor above Pentium 233MHz                                       | 6. USB port                       |
| 3. 128MB SDRAM  | 7. 600MB of free hard disk space. |
| 4. Video(VGA) card with 2MB of RAM for minimum 16-bit (High Color) display. |                                   |

U.S. Patent No. 6,088,053. Other patents pending



# VistaPix™

8x32  
Binocular & Digital Camera  
Model #72212  
User Guide

## Steps to view TV images

1. TV and dedicated Video cable.



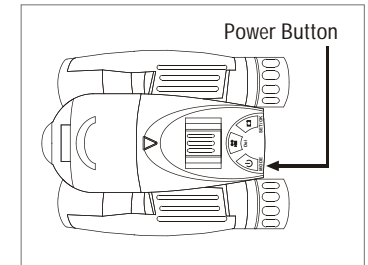
2. Plug the dedicated Video cable into the TV out port of VistaPix.



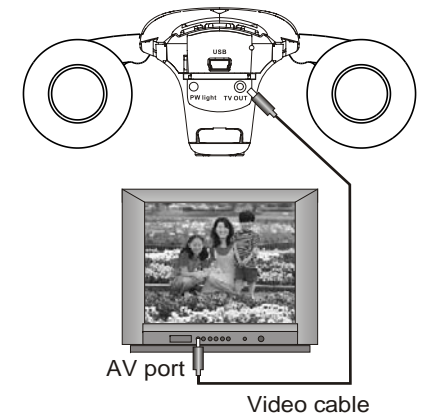
3. Connect the dedicated Video cable to AV terminal of the TV (video side).



4. Press power button. The screen will jump to browsing screen.

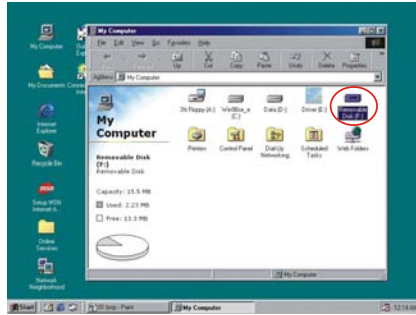
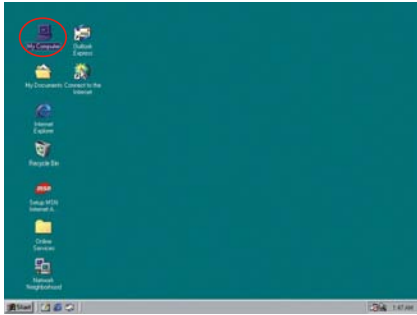


5. Press Up-down button to view images on TV.



## Viewing (Movie) recorded images on PC

1. Use the USB cable to connect the USB port from PC to VistaPix. After connection the "PC" display on LCD.
2. Double click "MY COMPUTER" on the PC's desktop.
3. Double click "Removable Device".



4. Open \DCIM\100scope\
5. Select the video file (\*.AVI) and double click it, the images video will play through "Windows Media Player" software or other software.



In order to use Windows Media Player to view the video AVI file taken with your VistaPix, the computer viewing the AVI file needs to be running Microsoft DirectX version 8.0a or later. If you experience problems viewing AVI files from Media Player you can upgrade DirectX to the most current version by going to the Microsoft DirectX Web Page at: [www.microsoft.com/windows/directx/default.aspx](http://www.microsoft.com/windows/directx/default.aspx)

Follow the download instructions given on the web site. The download is free.

## Cautions

### *Cautions*

- Never immerse VistaPix into any fluid or liquid. Remove dust or stains with a soft cloth dampened with water or neutral detergent. Keep in a dry and cool dust-free environment or a container when it is not used.
- Take the batteries out when VistaPix is not to be used over a long period.
- Avoid dropping the VistaPix. Do not disassemble VistaPix.

### *Warning:*

- Avoid using under combustibility gas environment.
- Do not look at the sun with the Binocular, which will damage the eyes even lead to blindness.
- Please take care when using the hanging tape, and do not let children twist it around their necks and bodies to avoid danger due to improper operation.
- Please don't throw the product with the gallus in hand to avoid damage to others or malfunction of the product.
- Keep the product away from babies to prevent them from putting the batteries or silica gels into their mouths, which causes danger.

### *Usage of the battery*

- Please always use Alkaline Battery (AAA Alkaline Battery)
- Please take out the batteries and keep them separately with the product if you'll not use the product for a long time.

### *About usage*

- Do Not place the product under the following environments to avoid any damage.
  1. Places in temperature higher than 70°C
  2. Damp or dusty places
  3. Places with strong electromagnetic field.
- Please do not disassemble or repair the product to avoid malfunction.
- Please do not drop the product to the ground to avoid malfunction.

## Contents

1.Introduction.....	P.1
2.Notice to user.....	P.2
3.Product Identification.....	P.3
4.Memory & Image Download.....	P.4
5.Using the camera.....	P.5
6.How to use the binocular.....	P.10
7.System requirements.....	P.11
8.Basic maintenance.....	P.12
9.Steps to install VistaPix driver.....	P.13
10.Steps to install Photo Manager.....	P.15
11.Steps to download image file.....	P.17
12.Viewing ( Movie ) recorded images on PC.....	P.18
13.Steps to view TV images.....	P.19

## Steps to download image file

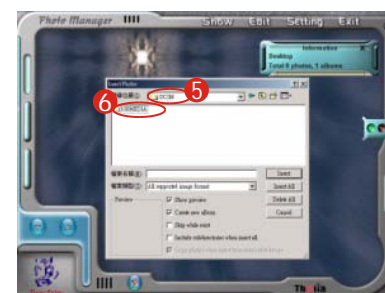
1.To execute Photo Manager.  
Select the buttons as indicated.



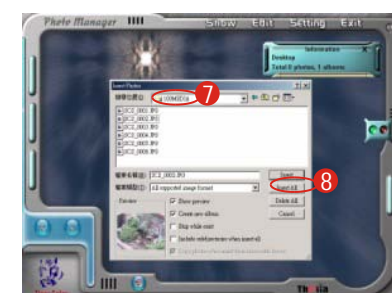
2.Enter " Removable Disk " to open  
"DCIM" file.



3.In " DCIM " file, open"100MEDIA " data file.



4.In " 100MEDIA " Data file, choose the pictures you want or choose all Images.



5.Images download finished.



### How To Use the PhotoManager

Select the buttons as indicated. "Help" will give you detailed information on Photo Manager's many features. To learn more about Photo Manager you can click on the icon (3) in the lower left side of the screen to directly to the PhotoManager web site [www.photo-diy.com/tw/](http://www.photo-diy.com/tw/)

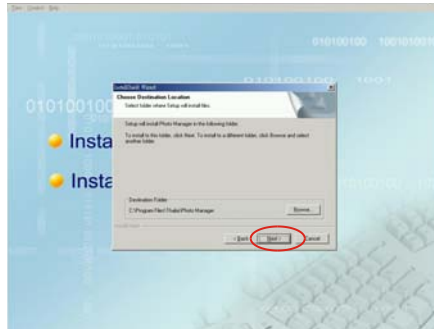


## Steps to install Photo Manager

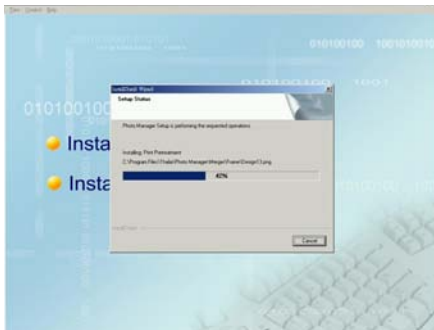
8. Choose "Custom" or "Typical" form of installation.



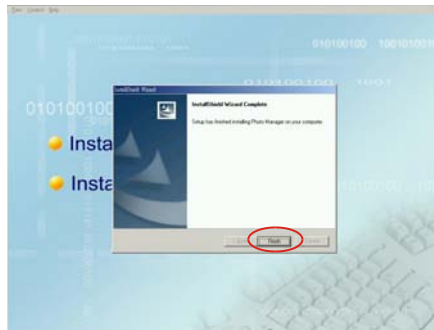
9. Please confirm the file location



10. Begin installing software



11. Software installation finished, please press "Finish" for confirmation



※ After installing VistaPix driver & software. Please restart your computer.

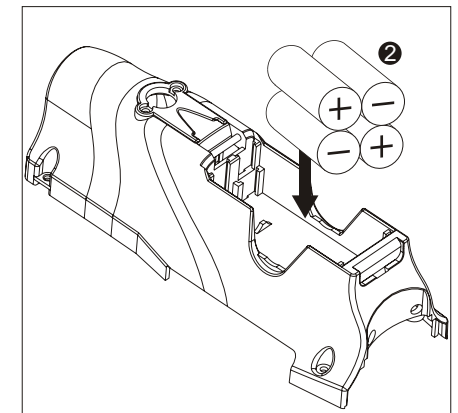
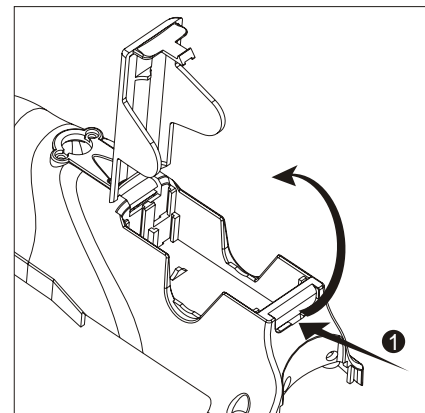
## 1. Introduction

VistaPix is a binocular integrated with a digital camera that is great for sporting events, concerts and wildlife activities such as hunting or bird-watching. VistaPix lets you record memories and sights at the touch of a button. Use the full-featured binocular for closer views and capture images to take home with you at the same time.

VistaPix makes it possible to share your fun with others by downloading images from the camera right to your computer to e-mail to your friends and family.

### Battery installation manner

1. Hold tight the bottom of battery cover, and lift to open.
2. Install four AAA batteries into the battery compartment as shown below.



## 2. Notice to User

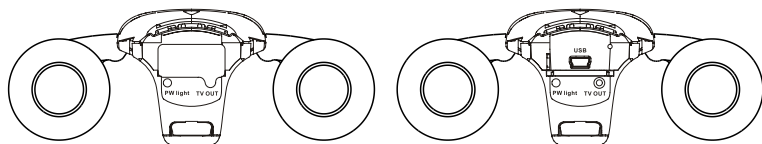
### WARNING!

Never use a VistaPix to look at the sun!

Looking at or near the sun will cause instant and irreversible damage to your eye. Eye damage is often painless, so there is no warning to the observer that damage has occurred until it is too late. Do not point the binocular at or near the sun. Children should always have adult supervision while observing.



- 2-1. When no action is performed with your binocular, the VistaPix will automatically turn off after 90 seconds.
- 2-2. The VistaPix has a battery level display in the right lower corner of the LCD. When the battery is low you will hear a long "beep". If no action is taken, VistaPix will automatically turn-off after 10 seconds.
- 2-3. Please use alkaline battery for this product.
- 2-4. VistaPix comes with a SD card slot that enables you to expand the memory. To install an optional SD card:  
Open the cover of the SD card slot and install the card (with the gold strips facing up) into the SD card slot (7) until it clicks into the position.



SD card lid closed

SD card lid opened

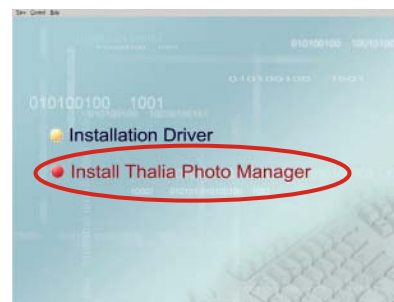


SD card

Foil face up

## Steps to install Photo Manager

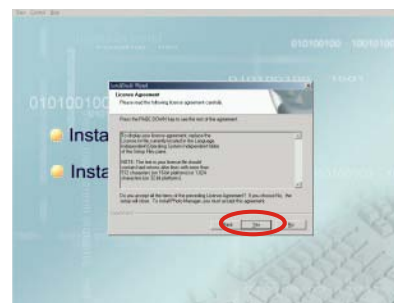
1. Insert the CD ROM
2. Select "Install Thalia Photo Manager"



4. Enter installing screen



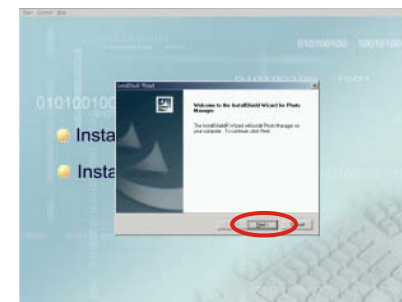
6. After confirming, please press "Yes"



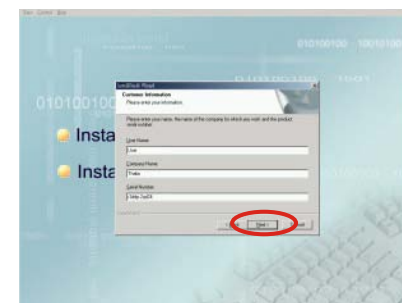
3. Choose the language and press confirm button



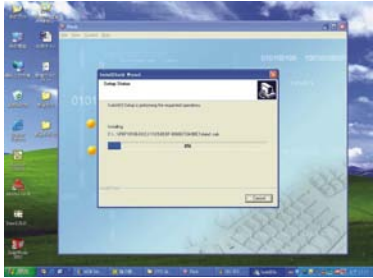
5. After confirming, please press "Next" button



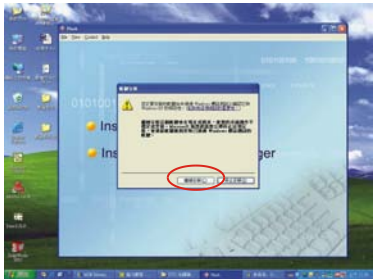
7. The serial number is located on the front of the CD. Press "Next" when complete



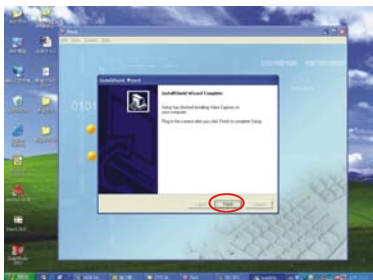
## Steps to install VistaPix driver



5. Computer will automatically install the driver.



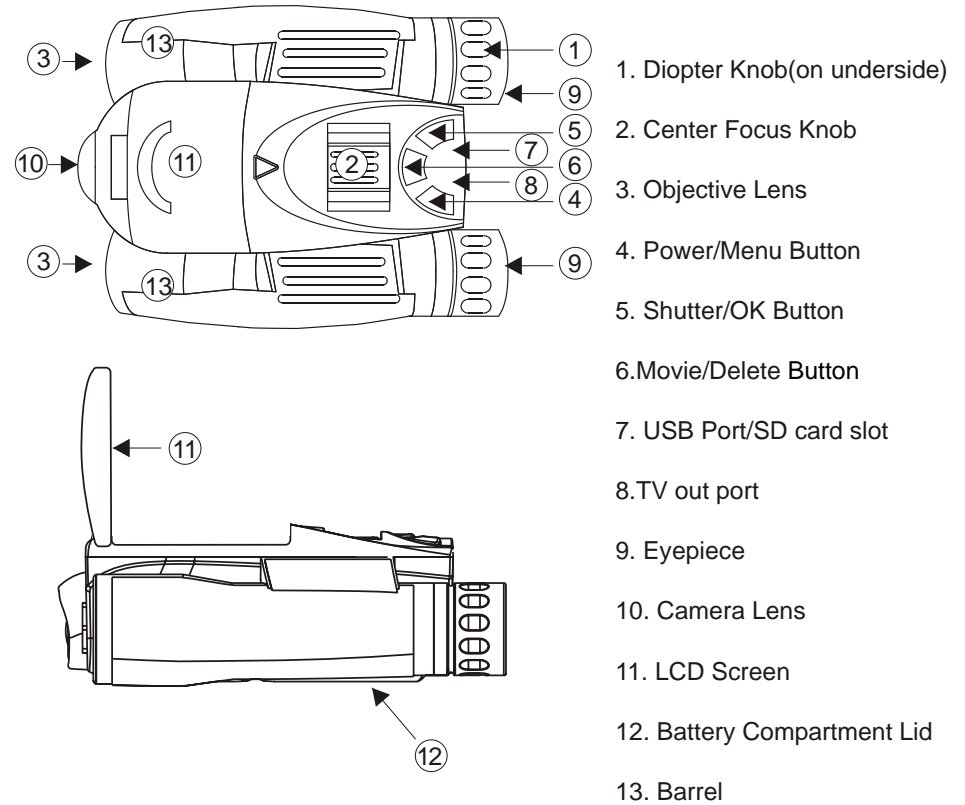
6. If you see the "Microsoft digital sign" request appear onscreen as you are installing the driver, please press "Yes" button to continue installing.



7. Installation complete. Please press "Finish" button.

After installing VistaPix driver. Please restart your computer.

## 3. Product Identification



1. Diopter Knob(on underside)
2. Center Focus Knob
3. Objective Lens
4. Power/Menu Button
5. Shutter/OK Button
- 6.Movie/Delete Button
7. USB Port/SD card slot
- 8.TV out port
9. Eyepiece
10. Camera Lens
11. LCD Screen
12. Battery Compartment Lid
13. Barrel

## Memory & Image Download

---

### Using SD memory card

The VistaPix has built in flash memory, so when you take images, the images will be saved into the flash memory inside your VistaPix until the memory is full.

Whenever you insert an optional SD memory card to take images, the images taken with the SD card and flash memory are stored separately.

So when downloading the images, the internal flash memory and the card memory must be downloaded separately.

### Download images

When downloading the photos, the internal memory and the card memory must be downloaded separately.

### Download from flash memory

Take out the SD card (if necessary) and connect it to the computer, then follow the downloading steps and all the photos in the flash memory can be downloaded.

### Download from Optional SD card

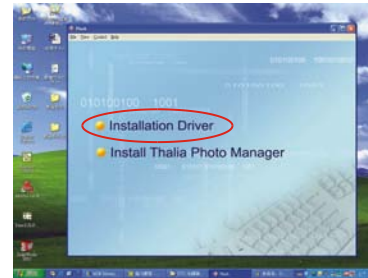
Insert the SD card and connect it to the computer, then follow the downloading steps and all the photos in the SD card memory can be downloaded.

(Once the SD card memory is full, you can remove the card and continue to use the VistaPix until the internal memory is full as well).

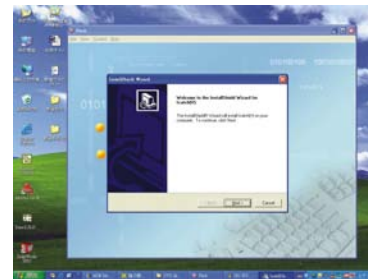
## Steps to install VistaPix driver

---

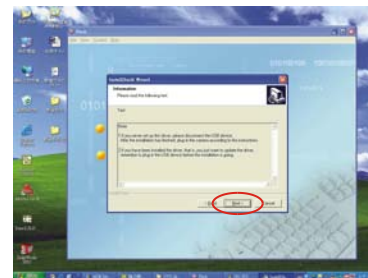
1. Before you install the driver, please make sure that your VistaPix is not connected to the computer.
2. If you have Windows ME/ 2000/ XP operation system installed in your computer, you should not need to install the VistaPix driver. Simply view and save images through your My Computer icon.



1. Insert the CD included with your VistaPix.
2. Click the mouse on "Installation Driver" to begin installation.



3. Begin "InstallShield Wizard" and your computer will automatically execute the installation of driver program.



4. Follow the "InstallShield Wizard" steps to guide you through the driver installation. Click on "Next" when complete.



## 7. Basic maintenance






Operating Environment: 41° to 104°F (5° to 40° C). 20%-85% relative humidity, non-condensing.

## Care of your VistaPix

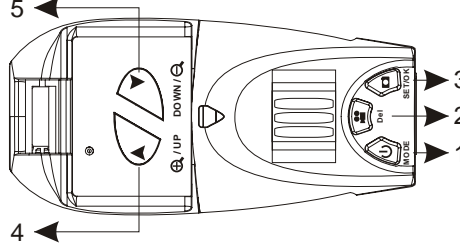
- 7-1. Never immerse VistaPix into any fluid or liquid. Remove dust or stains with a soft cloth dampened with water or neutral detergent. Keep in a dry and cool dust-free environment when not in use.
- 7-2. Take the batteries out when VistaPix is not to be used over a long period.
- 7-3. Avoid dropping the VistaPix. Do not disassemble VistaPix.

## 4. Using the Camera






Use this product under good lighting conditions, avoid facing light source directly. Remember to keep a distance of at least 49 feet (15 meters) away from the target when taking a photo. As you press the "Shutter/Set" button, hold the binocular very steady until you hear a "Beep" sound. If the binocular is unsteady, the camera will not focus well and blurred images will result.


- 4-1 Turn on the power by pressing  button for 3 seconds and you will hear two beep sounds. The monitor will display picture number and resolution. Press again to power off.
- 4-2 Press Up-down button  to zoom in and out. It can magnify the image up to 32x as seen on the LCD display.
- 4-3 Press the Shutter button  to take pictures. Shooting is completed when you hear a beep sound.
- 4-4 Press the Movie button  and a beep sound will signal that recording has begun. The green power indicator light will blink while recording is in progress. Press the Movie button  again to stop recording.

## Function




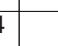
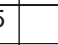
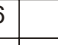



Button



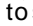

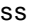
NO	INDICATORS	ITEMS
1		Power / menu
2		Movie / delete
3		Shutter / OK
4		Zoom in / up
5		Zoom out / down



Monitor



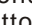
NO	INDICATORS	ITEMS
1		Number of Images Remaining
2		Image resolution ☆ 0.3MP, ☆☆ 2.0MP, ☆☆☆ 3.0MP
3		Movie mode
4		SD card mode
5		Auto shooting mode
6		Battery level
7		Memory gauge

### (Play back mode)

Press the Menu button , select "Play Back" and press OK button . Use Up-Down button  to select the pictures, press OK button  to display the picture in full screen. Press the Shutter button  again to return to a menu of nine thumbnail images.



### Erasing Pictures

Press the delete button  while the thumbnail menu or full-screen image is displayed. Select "Erase one" and press OK Button  to erase a single frame. Select "Erase all" and press OK button  to erase all frames.





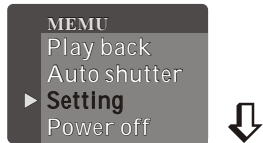
### Auto shutter mode(Timer)

Press the Menu button , and select "Auto Shutter". Press the OK button  again to take an image automatically after 10 seconds.



### (Setting mode)

Press the Menu button , and select "Setting". Press the OK button  again to enter the menu.

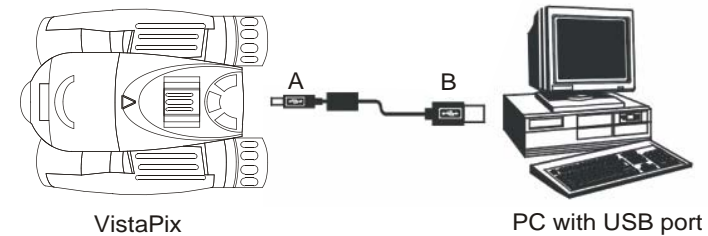


## 6. System requirements

- 6-1. Windows 98SE / 2000 / ME / XP
- 6-2. Pentium 233MHz or higher
- 6-3. 128MB SDRAM
- 6-4. Video(VGA) Card with 2MB of RAM for minimum 16-bit(High Color) display.
- 6-5. CD-ROM
- 6-6. USB port
- 6-7. 600MB of free hard disk space.

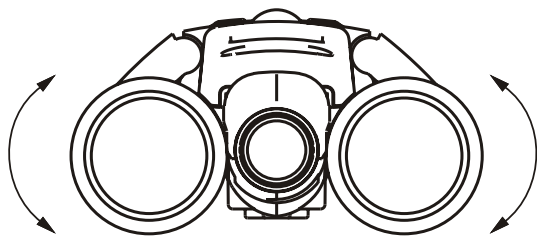
### Installation of driver

Since VistaPix is a Mass Storage Device you can access captured images just as if it were a hard drive, therefore no software driver is needed (See Mass Storage Mode ). If using VistaPix with an older version of Windows 98SE it may be necessary to install the software Driver.



## 5. How to use the binocular

To adjust the eye-relief for eyeglass wearers: Fold down the rubber eyecups and place them against your glasses to get the best viewing result.



### Adjusting the eyepieces

The distance between your eyes is called interpupillary distance. The interpupillary distance is different from one person to another. It is important to adjust your interpupillary distance before using the VistaPix:

- Hold VistaPix firmly in the normal viewing position.
- Adjust the barrels by pushing together or pulling apart until you see a single circular image with both of your eyes.

### Focusing the Binocular

- Set the Diopter Knob on underside of VistaPix to its center point between - and + .
- Choose an object that is at least 15 meters (49 ft) away.
- Looking with just your left eye, rotate the Center Focus Knob(2) until the object you are viewing is in best focus.
- Looking with just your right eye, rotate the Diopter Knob(1) until the object you are viewing is in best focus.
- Viewing your object with both eyes, turn the Center Focus Knob to bring it in best focus.

### Resolution Adjustment

Select "Resolution" and press OK Button. Choose the desired resolution and press OK button to change the image resolution. ☆ indicates 0.3MP, ☆☆ indicates 2.0MP, and ☆☆☆ indicates 3.0MP on the LCD screen.



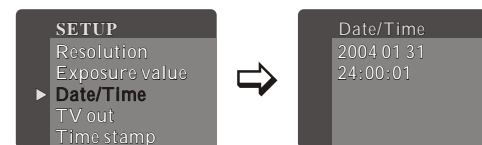
### Exposure Value

Select "Exposure value" and press the OK button. This allows you to change the exposure setting suggested by the camera. Press the Up or Down button to select a value between -1.5 and 1.5 and press OK button to accept the exposure value. Negative exposure values tend to underexpose (darken) your object while positive values will overexpose (brighten) the object.



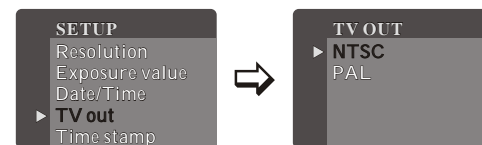
### Setup the Date

Select "Date /Time" and press the OK button to set the internal clock. Edit the correct date (y/m/d) and time (h/m/s) by pressing the Up-down button. Press the OK button again to complete the setting.





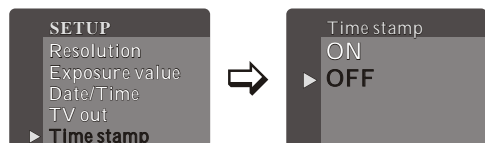
### TV-out Display Mode

Select "TV out" and press OK button. Choose the corresponding output (NTSC for United States or PAL for Europe) and press OK button to complete setting.


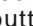


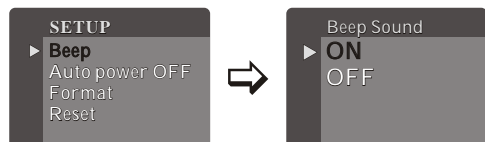
### Time stamp on photo

Select "Time stamp" from setting menu, press OK button , select ON to display time on photo. OFF to skip time on photo. Press OK button  again to complete the setting.





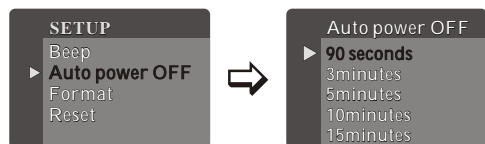
### Beep Sound

Select "Beep" from setting menu. Press OK button , select ON to turn on the beep sound. OFF to turn off the beep sound. Press OK button  to complete the setting.


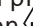



### Auto power

Auto power allows you to select the duration of time that your VistaPix can be inactive before it automatically powers itself down. Select "Auto power OFF" from setting menu, press OK button . Select the indicated time of auto power inactivity shutdown. Press OK button  again to complete the set-up.


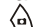


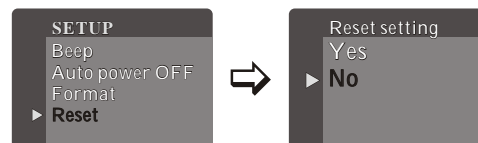
### Formatting

Select "Format" and press OK button . When you choose "Yes" and press Shutter button , a confirmation screen is displayed. Press OK button  to start formatting the internal memory. Warning— all stored image will be erased after formatting is complete.

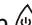



### Reset

Select "Reset" from setting menu, press OK button  to make the selection. Select "Yes" to return the original factory setting. Select "No" to retain the current settings. Press OK button  to complete the set-up.



### Power Off mode

Press menu button  and select "Power off". Press OK button  to power off.

