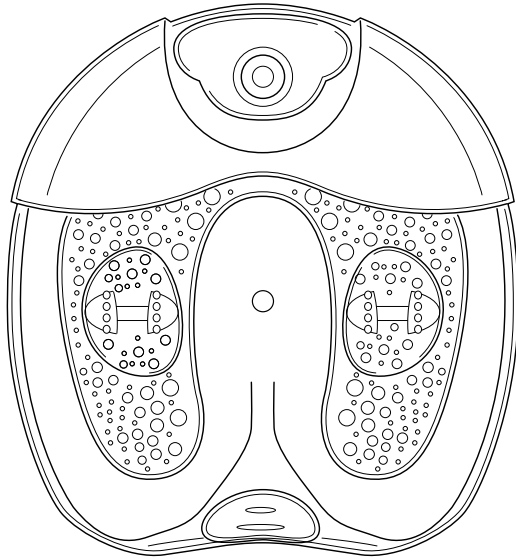


# RELAXOR®



## Happy Feet™ FOOTBATH

OWNER'S MANUAL &  
OPERATING INSTRUCTIONS

Models: FM14W, FM14B, FM14G, FM14P

---

SPA THERAPY™

---

# IMPORTANT SAFEGUARDS

When using an electrical appliance, basic safety precautions should always be followed, including the following:

Read all instructions before using the appliance.

**DANGER:** To reduce the risk of electrical shock:

- Always unplug this appliance from the electrical outlet immediately after using and before cleaning.
- Do not reach for an appliance that has fallen into water. Unplug it immediately.
- Do not use while bathing or showering.
- Do not place or store appliance where it can fall or be pulled into a tub or sink.
- Do not place in or drop into water or any other liquid.
- Do not attempt to plug or unplug unit while you are standing in water.

**WARNING:** To reduce the risk of burns, fire, electric shock or injury to persons:

1. An appliance should never be left unattended when plugged in. Unplug unit from outlet when not in use and before putting on or taking off Attachments.
2. Close supervision is necessary when this appliance is used by, on, or near children, invalids or disabled persons.
3. Use this appliance only for its intended use as described in this manual.
4. Do not use Attachments not recommended by Relaxor®.
5. Never operate this appliance if it has been dropped or damaged, or dropped into water. Refer to the warranty section of this manual.
6. Keep cord away from heated surfaces.
7. Never block the air openings of the appliance, or place it on a soft surface such as a bed or couch. Keep openings free of lint, hair, dust, etc.
8. Never drop or insert any object into air openings.
9. Never use while sleeping. Do not fall asleep while using.
10. Do not operate where aerosol (spray) products are being used or where oxygen is being administered.
11. Do not operate under blanket or pillow. Excessive heating can occur and cause fire, shock or injury to persons.
12. Do not carry this appliance by the Power Cord or use the cord as a handle.
13. This appliance is designed for household use only.

# IMPORTANT SAFEGUARDS (Con't.)

14. *Do not attempt to stand on or in Footbath. Use only while seated.*
15. *To disconnect, turn Control Dial to the OFF position, then remove plug from outlet.*
16. *Use heated surfaces carefully. May cause serious burns. Do not use over sensitive skin, on legs with varicose veins or in the presence of poor circulation. The unattended use of heat by children or incapacitated persons may be dangerous.*
17. *Connect the appliance to a properly grounded outlet only. See GROUNDING INSTRUCTIONS.*

**CAUTION:** *Please read all instructions carefully before operating.*

1. *All servicing of this Footbath must be performed by authorized personnel only.*
2. *If you have any concerns regarding your health, consult your doctor before using Footbath.*
3. *Individuals with pacemakers should consult a physician before using the Footbath.*
4. *In case of pregnancy, diabetes or illness, consult your doctor before using Footbath.*
5. *If you experience pain in any muscle or joint for a prolonged period of time, discontinue use and consult your doctor. Persistent pain could be a symptom of a more serious condition.*
6. *Never use Massager on open wounds, discolored areas or any area of the body that is swollen, burned, inflamed or sore.*
7. *Massage should be pleasant and comfortable. Should pain or discomfort result, discontinue use and consult your physician.*
8. *We recommend using this unit for no longer than 20 minutes at a time. Extensive use could cause the product to overheat. Should this occur, discontinue use and allow the unit to cool before operating.*
9. *Do not use in the following cases: Tuberculosis, benign and malignant tumors, hemorrhages, inflammations of the skin, phlebitis and thrombosis, open and fresh wounds, bruises, broken skin or varicose veins, or undetermined calf pain or joint pain.*
10. *Keep away from children.*

**SAVE THESE INSTRUCTIONS  
FOR HOUSEHOLD USE ONLY**

# SPECIAL WARNINGS

- *Always check the temperature of the water before putting your feet into the Footbath.*
- *DO NOT stand in the unit. Sit down and place your feet into the Footbath.*
- *Always unplug the unit when not in use and when filling, emptying, cleaning or moving the unit.*
- *Make sure that your hands are dry when operating the Control Dial or removing the plug.*
- *DO NOT leave Footbath unattended while it is operating.*
- *The appliance has a hot surface. Persons sensitive to heat must be careful when using the appliance.*
- *Do not use soap or any materials not recommended by Relaxor® in Footbath. Put water only in Footbath.*

***NOTE: Footbath will only maintain the temperature of the water used. It will not heat cold water. For a warm water massage, please fill the unit with warm water.***

# GROUNDING INSTRUCTIONS

*This product must be grounded. If it should malfunction or break down, grounding provides a path of least resistance for the current, and will reduce the risk of electrical shock. The plug must be plugged into an appropriate outlet that is properly installed and grounded in accordance with all local codes and ordinances.*

**DANGER!** *Improper connection of the equipment-grounding conductor can result in a risk of electric shock. Check with a qualified electrician or serviceman if you are in doubt as to whether the product is properly grounded. Do not modify the Plug provided with the product — if it will not fit the outlet, have a proper outlet installed by a qualified electrician.*

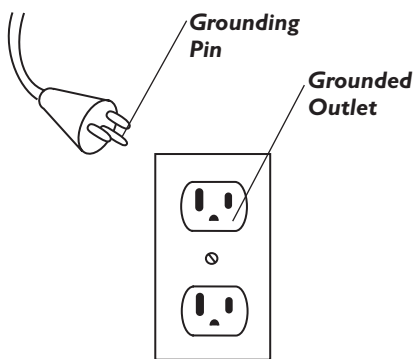


Figure 1

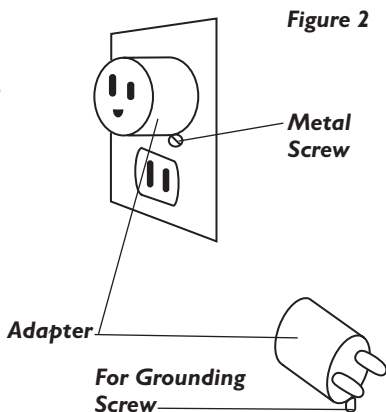
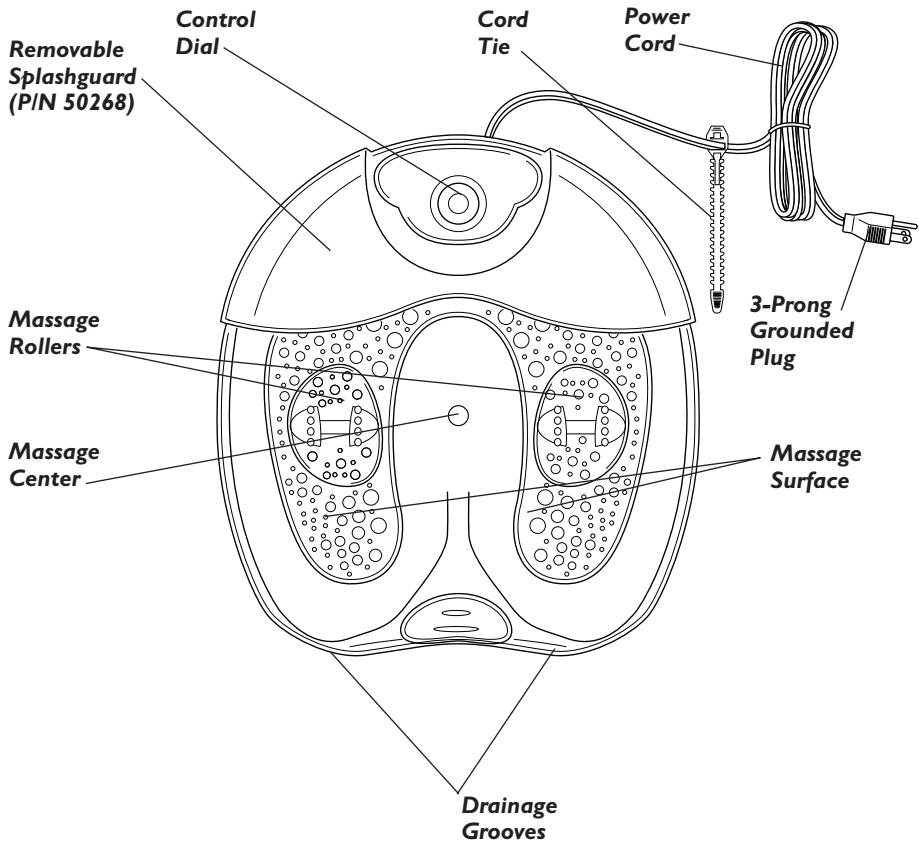


Figure 3

*This product is for use on a normal 120-volt circuit and has a grounding plug that looks like the plug illustrated in the Figure 1. However, a temporary adapter that looks like the adapter illustrated in Figures 2 and 3 may be used to connect this plug to a 2-pole receptacle as shown in Figure 2 if a properly grounded outlet is not available. The temporary adapter should be used only until a properly grounded outlet (Figure 1) can be installed by a qualified electrician. The green colored rigid ear, lug or the like extending from the adapter must be connected to a permanent ground such as a properly grounded outlet box cover. Whenever the adapter is used, it must be held in place by a metal screw.*

**Congratulations on owning the Relaxor® Happy Feet™ Footbath**, a unique development in the field of massage machines and the latest in a long line of personal care products brought to you by Relaxor.® A truly calming massage... warm vibrations cascade from the point of massage through your body, providing a wonderfully soothing experience.

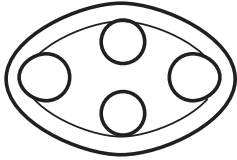


# MESSAGE CENTER ATTACHMENTS

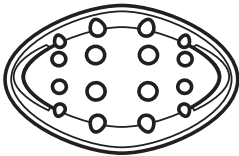
1. *Acunode Attachment (P/N 50265\*)*

2. *Acupressure Attachment (P/N 50266\*)*

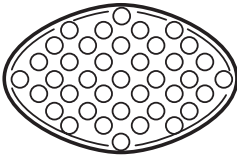
3. *Roller Massage Attachment (P/N 50267\*)*



1.



2.



3.

**\*Please Include Color Preference:**

*B = White/Blue*

*TB = Translucent Blue*

*TG = Translucent Green*

*MP = Metallic Purple*

# HOW TO USE YOUR FOOTBATH

1. Remove Footbath and all accessories from box.
2. Remove plastic covering from plug and unwrap cord.

**IMPORTANT:** Ensure that the unit is unplugged before filling with water. Do not fill past the MAX fill line.

3. Fill Footbath with 1.5 inches of warm water. Do not overfill.
4. Select the Massage Center Attachment that you wish to use and place it in the Massage Center.
5. Place Footbath at the base of a sturdy chair and plug into standard 120V electrical outlet.

**NOTE:** Footbath will only maintain the temperature of the water used. It will not heat cold water. For a warm water massage, please fill the unit with warm water.

**NOTE:** Heat should be pleasant and comfortable. Should pain or discomfort result, discontinue use and consult your physician.

**NOTE:** Do not use unit for more than 20 minutes at a time.

6. Turn the Function Dial to indicate the massage of your choice:

0 = OFF

1 = Massage

2 = Massage + Heat

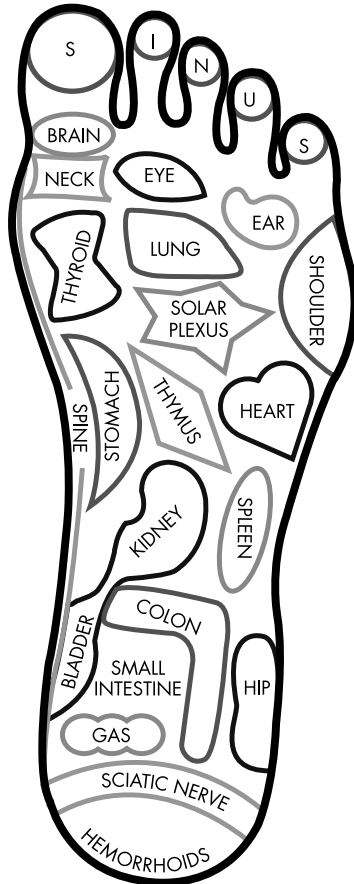
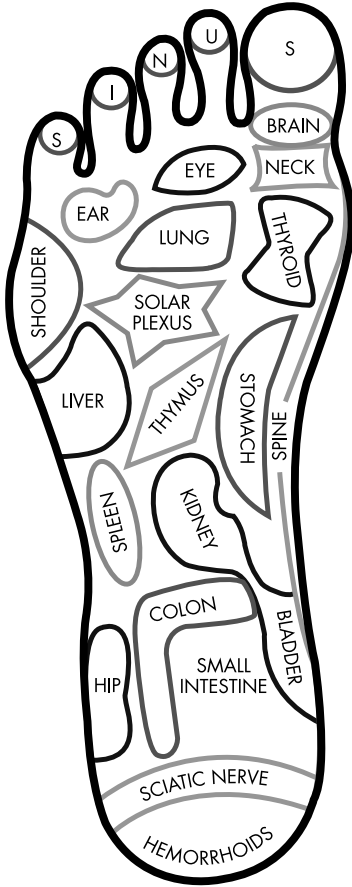
7. Sit in a sturdy chair and slowly place your feet in Footbath.
8. Enjoy massage. Enhance your massage experience by slowly rubbing your feet along the Massage Rollers. You may massage specific areas of your feet with the Massage Node.
9. When finished, turn Control Dial to OFF and unplug the unit. Hold unit over capable drain and tip the Footbath, allowing water to spill out along one of the Drainage Grooves. **NEVER allow water to come into contact with the Control Dial.**



# REFLEXOLOGY CHART

Refer to the Reflexology Chart, and concentrate the massage on the areas of the foot that correspond to the parts of your body that feel tense.

**CAUTION:** This is not a substitute for a doctor's care. If pain results, discontinue use.



# MAINTENANCE AND CLEANING

## **CLEANING**

*Unplug the unit and allow it to cool before cleaning. Clean with a soft, damp cloth. Never allow water or any other liquid to come into contact with the Control Dial.*

*After cleaning, wipe surface with a dry cloth.*

*Never use detergents or abrasive cleaning agents.*

*Periodically straighten cord if it becomes twisted.*

## **STORAGE**

*Cord can be bundled with Cord Tie or wrapped around the Rubber Feet of the unit.*

*Store unit in its box, or in a clean, dry place*

*This unit contains no user serviceable parts. If damaged, refer to the warranty section of this manual.*



# LIMITED ONE YEAR WARRANTY

**Warranty:** This Relaxor® product is warranted by Salton, Inc. to be free from defects in materials or workmanship for a period of (1) year from the original purchase date. This product warranty covers only the original consumer purchaser of the product.

**Warranty Coverage:** This warranty is void if the product has been damaged by accident in shipment, unreasonable use, misuse, neglect, improper service, commercial use, repairs by unauthorized personnel, normal wear and tear, improper assembly, installation or maintenance abuse or other causes not arising out of defects in materials or workmanship. This warranty is effective only if the product is purchased and operated in the USA, and does not extend to any units which have been used in violation of written instructions furnished by with the product or to units which have been altered or modified or to damage to products or parts thereof which have had the serial number removed, altered, defaced or rendered illegible.

**Implied Warranties:** ANY IMPLIED WARRANTIES WHICH THE PURCHASER MAY HAVE ARE LIMITED IN DURATION TO ONE (1) YEAR FROM THE DATE OF PURCHASE. Some states do not allow limitations on how long an implied warranty lasts, so the above limitation may not apply to you.

**Warranty Performance:** During the above one-year warranty period, a product with a defect will be either repaired or replaced with a reconditioned comparable model (at our option) when the product is returned to the Repair Center, or the purchase price refunded. The repaired or replacement product will be in warranty for the balance of the one-year warranty period and an additional one-month period. No charge will be made for such repair or replacement.

**Service and Repair:** Should the appliance malfunction, you should first call toll-free 1 (800) 233-9054 between the hours of 9:00 am and 5:00 pm Central Standard Time and ask for CONSUMER SERVICE stating that you are a consumer with a problem. Please refer to model numbers: FM14W, FM14B, FM14G or FM14P when you call.

**In-Warranty Service (USA):** For an appliance covered under the warranty period, no charge is made for service or postage. Call for return authorization 1 (800) 233-9054.

**Out-of-Warranty Service:** A flat rate charge by model is made for out-of-warranty service. Include \$6.00 (U.S.) for return shipping and handling. We will notify you by mail of the amount of the charge for service and require you to pay in advance for the repair or replacement.

**For Products Purchased in the USA, but Used in Canada:** You may return the product insured, packaged with sufficient protection, and postage and insurance prepaid to the USA address listed below. Please note that all customs duty / brokerage fees, if any, must be paid by you and we will require you to pay the cost of customs duty / brokerage fees to us in advance of our performing any service.

**Risk During Shipment:** We cannot assume responsibility for loss or damage during incoming shipment. For your protection, carefully package the product for shipment and insure it with the carrier. Be sure to enclose the following items with your appliance: any accessories related to your problem, your full return address and daytime phone number, a note describing the problem you experienced, a copy of your sales receipt or other proof of purchase to determine warranty status. C.O.D. shipments cannot be accepted.

**To return the appliance, ship to:**

ATTN: Repair Center  
Salton, Inc.  
708 South Missouri Street  
Macon, MO 63552

**To contact us, please write to, call, or email:**

Salton, Inc.  
P.O. Box 1637  
Columbia, MO 65205-1637  
1-800-233-9054  
E-mail: Salton@Saltonusa.com

**Limitation of Remedies:** No representative or person is authorized to assume for Salton, Inc. any other liability in connection with the sale of our products. There shall be no claims for defects or failure of performance or product failure under any theory of tort, contract or commercial law including, but not limited to negligence, gross negligence, strict liability, breach of warranty and breach of contract. Repair, replacement or refund shall be the sole remedy of the purchaser under this warranty, and **in no event shall Salton be liable for any incidental or consequential damages, losses or expenses.** Some states do not allow the exclusion or limitation of incidental or consequential damages, so the above limitation or exclusion may not apply to you.

**Legal Rights:** This warranty gives you specific legal rights, and you may also have other rights which vary from state to state.

For more information on Salton products: visit our website: [www.eSalton.com](http://www.eSalton.com)

©2002 Salton, Inc. All rights reserved.

Made in China

P/N 61208

12/02