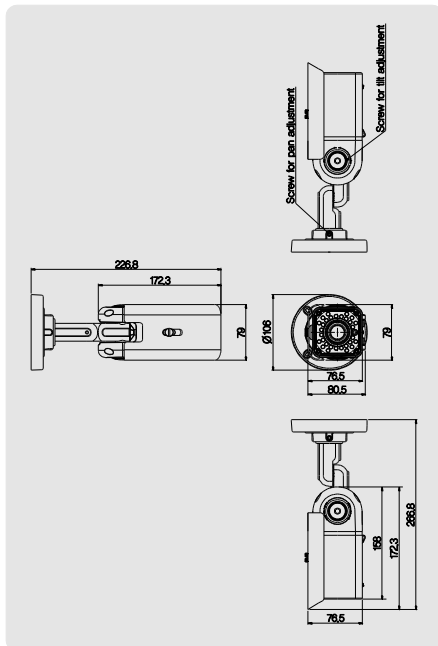


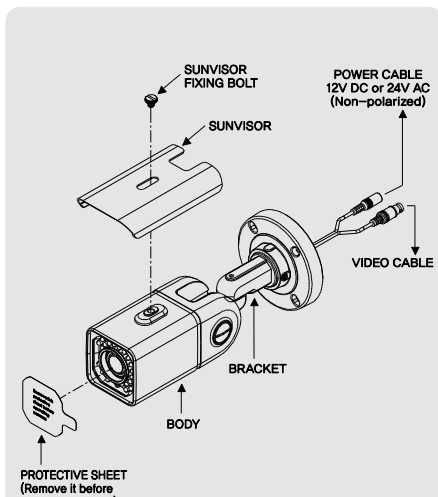
◆FEATURE

1. Long visible range at night.(50m Max. indoors, 40m Max. outdoors)
2. This camera uses split glass technology to prevent IR light reflection.
3. This camera has a vari-focal IR lens to prevent focus drift under IR lighting.
4. The IR cut filter is removed at night to receive maximum available light.
5. This product is weather proof to resist rain, snow and other environmental factors.(IP65)
6. This product is made of corrosion-free materials to resist rust and corrosion for extended periods of time.
7. The built-in sunshield helps the camera produce clear pictures under a variety of lighting conditions.
8. Power & video cables are concealed for extra security.(Cable through the mount).
9. Unique bracket allows the camera to be fully adjustable from both wall and ceiling mounting positions.
10. This camera is incredibly to install with its 3-axis camera construction, which makes the camera ceiling, wall or slope mountable.
11. Mechanical filter exchange(True Day & Night), built-in WDR function.
12. Supreme resolution.(690 TV-Line)

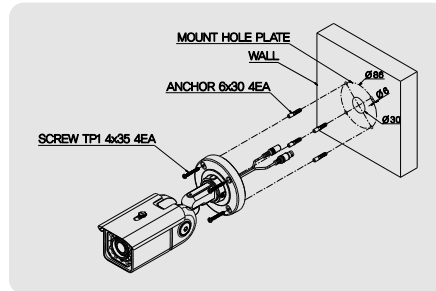
◆DIMENSION



◆CONFIGURATION



◆WALL MOUNT INSTALLATION #1

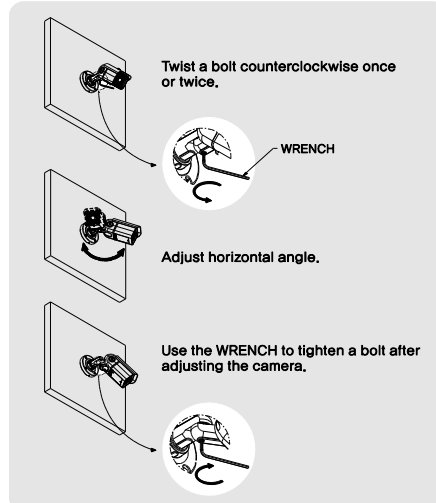


1. Make a hole  $\varnothing 30$ mm in diameter for routing cable.
2. Using the mounting plate, drill four holes on the wall.
3. Insert the anchors.
4. Attach the screws.

◆WALL MOUNT INSTALLATION #2

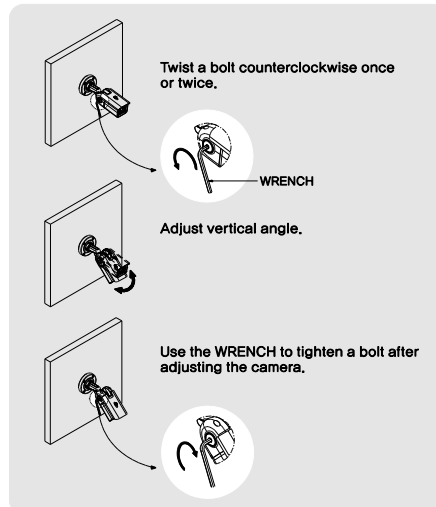
1. Adjust horizontal angle.

- 1) Loosen the bolt to adjust the horizontal angle of the camera.
- 2) Use the WRENCH to tighten the bolt after adjusting the camera.

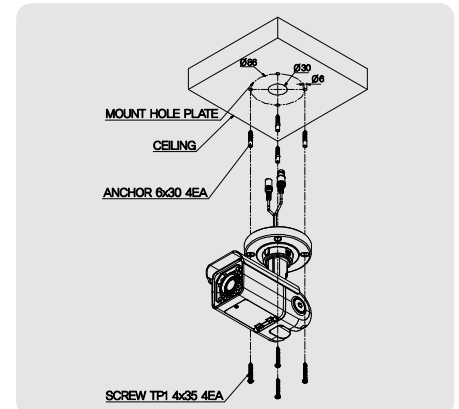


2. Adjust vertical angle

- 1) Loosen a bolt to adjust vertical angle of the camera.
- 2) Use the WRENCH to tighten a bolt after adjusting the camera.



◆CEILING MOUNT INSTALLATION #1

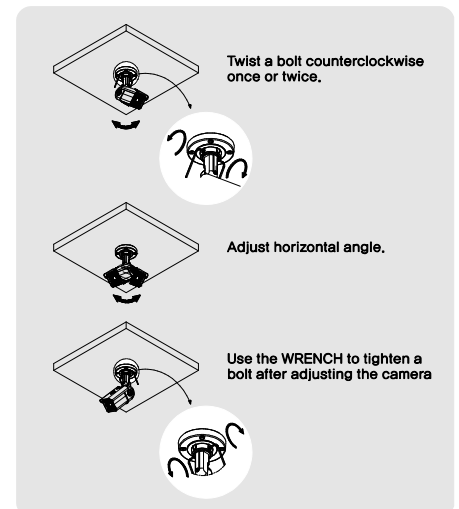


1. Make a hole  $\varnothing 30$ mm in diameter for routing cable.
2. Using the mounting plate, drill four holes on the ceiling.
3. Insert the anchors.
4. Attach the screws.

◆CEILING MOUNT INSTALLATION #2

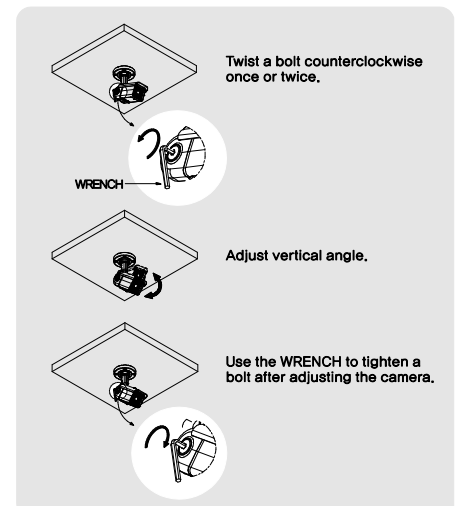
1. Adjust horizontal angle.

- 1) Loosen the bolt to adjust the horizontal angle of the camera.
- 2) Use the WRENCH to tighten the bolt after adjusting the camera.



2. Adjust vertical angle

- 1) Loosen the bolt to adjust the vertical angle of the camera.
- 2) Use the WRENCH to tighten a bolt after adjusting the camera.

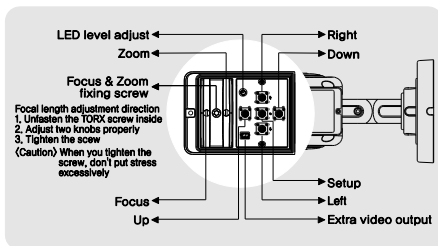


◆ SPECIFICATION

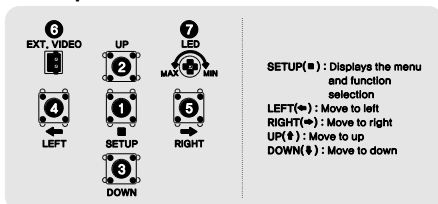
Model No.	WDRB1
Image Sensor	1/3" PIXIM DPS SENSOR - SEAWOLF
Effective Pixel	758(H) X 540(V) PIXEL
Resolution	690 TV-Line
TV Type	NTSC
Sync. Type	Internal / External
Scanning System	Progressive scan
Video Output	1.0 Vp-p(Sync. Negative) Termination 75Ω±10%
Gamma Characteristic	γ = 0.45(Selectable)
White Balance	ATW / AWC / MANUAL(2,000 ~ 11,000°K)
Min. Illumination	0.1 Lux(Sense up X64) 0 Lux(131ft range at LED high)
S/N Ratio	More 50 dB(AGC OFF)
SDNR	ON
Backlight	WDR / BLC / OFF
DNR	True D&N(AUTO / COLOR / BW)
Day & Night	AUTO / MANUAL
Shutter Speed	Max. X64(X2, X4, X8, X16, X32, X64)
Test Illuminance Area	Average test illuminance by front view
Reverse Polarity Protection	Regulated 12V DC or 24V AC
Power Supply	Max. 500mA(at 12V DC) Max. 510mA(at 24V AC)
Current Consumption	Yes
LENS	Vari focal auto iris lens
Operation Temp.	14 °F to 122 °F
Preservation Temp.	-4 °F to 140 °F
Dimension	3.1"(W) X 3"(H) X 6.8"(L)mm
Weight	3.3 lbs.

※All specifications are subject to change without notice to improve the quality.

◆ FUNCTIONS



1. Setup for camera functions



- ①Setup : Press "SETUP" button to go to the menu.
- ②Up, ③Down : Use "UP" or "DOWN" button to navigate.
- ④Left, ⑤Right : Use "RIGHT" or "LEFT" button to navigate
- ⑥EXT-VIDEO : Test monitor connection.

2. Camera function setting

OSD Menu	Select menu	Sub menu	Summary	
LENS SELECT	DC		Lens type selection (Fixed iris lens or Vari-focal auto iris lens)	
	MANUAL			
EXPOSUR E...	MANUAL		*Preset mode for common application to speed up installation	
		CUSTOM	User setting value	
		INDOOR	For indoor	
		WINDOOR	Maximizing WDR function	
	PRESETS	OUTDOOR	For outdoor	
		WDR	LOW	Although the subject had a bright light behind of it, you can see the subject clearly as well as background
			NORMAL	
			MEDIUM	
	HIGH			
	BLC	OFF	Determines that use BLC(Back Light Compensation) function or not	
ON				
AGC	CUSTOM - -		AGC level selectable (CUSTOM - - LIMIT : 60)	
	LOW(24)			
	MEDIUM (30)			
	HIGH(36)			
SENSE-UP		Determines that use the SENSE-UP function or not and SENSE-UP level selectable		
	OFF	No use sense-up mode		
	AUTO - -	Use sense-up mode automatically in low illumination (Limit : 2X ~ 64X)		
	MANUAL - -	Sense-up level selectable between x2 ~ x64		
FLICKERLESS	OFF	Optimized mode for flicker (If user choose CRR2 mode, AWC mode is not available on the White Balance menu)		
WHITE BALANCE	ATW	CRR	Balances the color automatically depending on the source of light from 2,000°K ~ 11,000°K	
	AWC ↓	CRR2	Move the camera lens toward to white paper then press the enter button to find the optimal white balance for current environment (User can not use this mode when Flickerless is CRR2)	
	MANUAL ↓	R/B - -	Adjust the Red or Blue values to shift the color of the object	
KELVIN - -		Adjust color temperature		
DAY & NIGHT	AUTO ↓	INPUT DELAY (Sec)	The camera automatically detects lighting condition and selects the mode accordingly	
	COLOR		The picture is always displayed in Color	
	B/W		The picture is always displayed in Black and white	
IMAGE ADJUST...	GAMMA	25 ~ 45 ~ 100	Change the GAMMA of the screen(Default : 45)	
		SHARPNESS	MIN ~ MAX	Change the sharpness of the screen(Default : Max)
		COLOR GAIN	-8 ~ 0 ~ 8	Change the color gain of the screen(Default : 0)
	FLIP	OFF	Normal image(No image inversion)	
		HORIZ	Set a horizontal image inversion	
		VERT	Set a vertical image inversion	
		BOTH	Set horizontal and vertical image inversion	
	ZOOM	OFF	Normal image(No Zoom)	
		ON ↓	Max 4x digital zoom available	
	MOTION	OFF		No use motion detection function
ON...		AREA 1 ~ 4	Select motion detection area up to 4 area - Adjust position & size of motion detection area - Press the enter button to move into the motion area setting section, whenever you press the enter button, the mask color is changed. - When the mask color is white you can set the position of mask by up, down, left and right button. - When the mask color is green and red you can adjust the size by 4 buttons. - Press the enter button for a few second to escape.	

PRIVACY	OFF		No use privacy mask function
	ON - -	MASK 1-12	- Allow you to mask certain areas of the screen, support 12 privacy zone - Press the set button to move into the privacy mask setting section, whenever you press the set button, the mask color is changed. - When the mask color is white(or black or RED) you can set the position of mask by up, down, left and right button. - When the mask color is blue, you can adjust the size by 4 buttons. - Press the set button for a few second to escape.
FUNCTION SETUP..	CAMERA ID SETUP	ID DISPLAY	Display the camera ID on the screen
		CAMERA ID	Change the camera ID
SYNC	INT	ID POSITION	Select the position to display the ID on the screen
			Internal Sync with 12V DC power
		V-PHASE	External Sync with 24V AC power (Dual power only) Phase controllable at 24V AC input(L/L mode)

- The '↓' icon appeared with desired function, press the set button to move sub menu.
- The '- -' icon appeared with function that is unavailable according to function setting.
- User can control the menu by using PELCO-D, 2,400bps only

Speco Technologies is constantly developing product improvements. We reserve the right to modify product design and specifications without notice and without incurring any obligation.