



nextarTM 

**MA99T | Digital MP3 Player
Instruction Manual**

FCC CERTIFICATION

THIS DEVICE COMPLIES WITH PART 15 OF THE FCC RULES. OPERATION IS SUBJECT TO THE FOLLOWING TWO CONDITIONS : (1) THIS DEVICES MAY NOT CAUSE HARMFUL INTERFERENCE, AND (2) THIS DEVICE MUST ACCEPT ANY INTERFERENCE, RECEIVED, INCLUDING INTERFERENCE THAT MAY CAUSE UNDESIRE OPERATION.

NOTE: This equipment has been tested and found to comply with the limits for a Class B digital device, pursuant to part 15 of the FCC Rules. These limits are designed to provide reasonable protection against harmful interference in a residential installation. This equipment generates, uses and can radiate radio frequency energy and, if not installed and used in accordance with the instructions, may cause harmful interference to radio communications. However, there is no guarantee that interference will not occur in a particular installation. If this equipment does cause harmful interference to radio or television reception, which can be determined by turning the equipment off and on, the user is encouraged to try to correct the interference by one or more of the following measures: -Reorient or relocate the receiving antenna. -Increase the separation between the equipment and receiver. -Connect the equipment into an outlet on a circuit different from that to which the receiver is connected. -Consult the dealer or an experienced radio/TV technician for help.

NOTE: THE MANUFACTURER IS NOT RESPONSIBLE FOR ANY RADIO OR TV INTERFERENCE CAUSED BY UNAUTHORIZED MODIFICATIONS TO THIS EQUIPMENT. SUCH MODIFICATIONS COULD VOID THE USER'S AUTHORITY TO OPERATE THE EQUIPMENT.

INTRODUCTION

Thank you for purchasing our MP3 player. Before using the unit please read this manual carefully to obtain the best possible performance from your player. Keep this manual for future reference

SAFETY INSTRUCTIONS

Never use the player during driving or operating other vehicles to avoid traffic accidents. Do not listen at extremely high volumes to avoid damaging your hearing.

Please insert the earphone prior to turning on the player, which will not only avoid damaging the earphones, but also keep the player in good condition.

Keep the player clean and never store the player close to a heat source or in dirty, humid or rainy places and avoid direct sunlight.

If the player becomes dirty, please clean with soft cloth. Clean only with water and never clean with alcohol or other chemical cleaners.

Never use the player in extremely dry environments to avoid static.

Never disconnect the player from your PC abruptly during downloading, uploading and formatting to avoid program failures or data loss.

When the player is used as removable disk, please follow the proper file download and upload procedures. Nextar cannot assume responsibility for any file lost due to misuse.

SYSTEM REQUIREMENTS

- Microsoft Windows98/2000/Me/XP
- Pentium 200MHZ or above
- 120MB hard disk space
- USB
- Mouse installed
- CD-ROM drive

CONTENTS

1. Function summary.....	2
2. Getting to know the player.....	4
- Appearance and controls.....	4
- Display screen.....	4
3. Basic functions.....	4
- Start up/shutdown	4
- Enter a menu.....	4
- Browsing Tracks.....	5
- Function Modes.....	5
- Adjust volume.....	6
- Play Music.....	6
4. Operation.....	7
- Music mode/Play mode.....	7
- Record mode.....	8
- FM mode.....	8
5. Play music.....	9
- Add and delete files.....	9
- How to use add DRM music.....	9
- Simple operation.....	13
- Equalizer mode.....	13
- Display lyrics (Karaoke).....	14
6. Voice recorder.....	15
- Record mode.....	15
- Choose record type.....	15

- Play recorded files.....	16
7. Transfer recorded files to your PC.....	16
8. How to use the FM radio.....	17
9. Telephone book.....	18
10. System Setup.....	20
- How to enter setup.....	20
- Brief introduction to all options.....	20
- Detailed operating instructions.....	20
11. Use as a USB disk.....	24
- Creating a new folder.....	24
12. Upgrading the player.....	25
13. Miscellaneous settings.....	26
14. Important Instructions.....	30
15. Definitions.....	31
16. Troubleshooting.....	32
17. Specifications.....	33

1. FUNCTION SUMMARY

- Digital Audio formats - MP1, MP2, MP3,WMA, WMV, ASF, WAV (Easy to work with Windows Media Player)
- Firmware upgrades (Check periodically) - www.nextar.com.

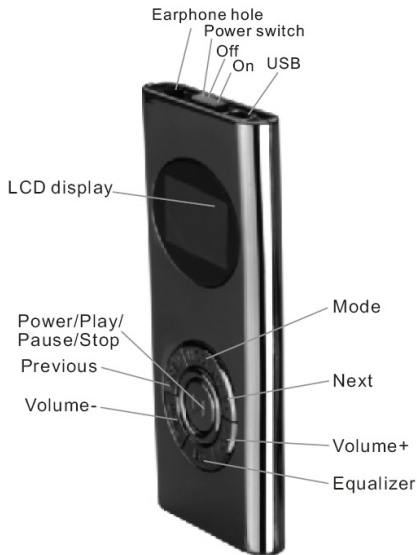
com will provide the latest software upgrades and functions

- Removable Disk - Manipulate files via the "mobile disk" in "My PC" without any additional programs on your PC (drive program needs to be installed for operating systems prior to WIN2000)
- "Dream-space" disk mode - Enables you to separate the storage disk via the "mobile disk" in "My PC" into two disks using the utilities included on the accompanying CD and encrypt one of those disks to hide the disk space. This encrypted space can then not be read by others without a password
- Record/Replay - Record your voice with the microphone and save as WAV or ACT. You can then choose to replay that all such recordings or to replay selected recordings
- Seven preset equalizer - Can be set to natural, rock, pop, classical, soft, jazz or heavy bass

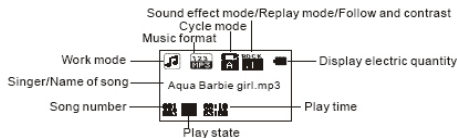
- Various play modes - Can be set to normal, cycle single song, play directories, cycle directories, cycle all, shuffle or browse
 - Shutdown timer - Sleep mode and power-save mode to simplify and extend battery use
 - Full-graphics menu - Graphic menus
-
-

2. GETTING TO KNOW THE PLAYER

Appearance and controls



Display screen



3. BASIC FUNCTIONS

Start up/shutdown

First time, you should dial the Power switch to the ON position - the player will start up automatically. To shutdown player press and hold PLAY or dial the Power switch to the position of Off.

Enter a menu

Menus: *Main menu* (entered by momentarily holding Mode key when not playing), *Play submenu* (entered by pressing Mode key while playing), and *Stop submenu* (entered by pressing

Basic functions (cont.)

Browse Tracks

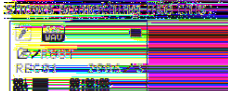
Browse forward by sliding Mode key clockwise and backward by sliding Mode key counter-clockwise

Function Modes

Go into different modes from main menu by sliding Mode key clockwise or anti-clockwise then pressing Mode key:



Select Record mode, display

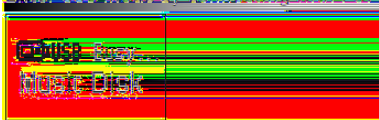


Select System setup, display



Basic functions (cont.)

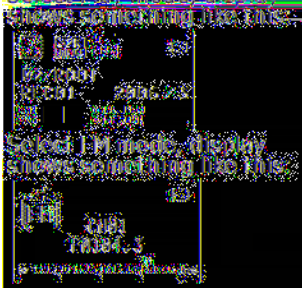
Enter USB mode by connecting with PC:



Select Music mode, display shows something like this:



Select Play mode, display



Basic functions (cont.)

Adjust volume

Decrease volume by pressing VOL-; increase volume by pressing VOL+.

PLAY music

Press Play or stop (or pause while recording); exit from submenu.

Battery recharge

Connect MP3 player to PC via the USB cable, the battery will recharge automatically. If the battery icon on the player screen flicker ceaselessly, that means the battery is recharging, otherwise means it is full, not need to recharge.

Basic functions (cont.)

NOTE:

Please dial the Power switch to the position of ON before you connect the MP3 player to PC, otherwise the battery icon on the player screen will not flicker anytime, so you can't see the recharge status.

4. OPERATION

Music mode / Play mode

KEY	Action	Stop state	Play state	Play submenu	Stop submenu
Play	Press	Play	Stop	Exit from menu	Exit menu
	Hold	Shutdown	Shutdown	Shutdown	Shutdown
Mode	Long press	Enter main menu	Enter main menu	Enter main menu	Enter main menu
	Press	Enter/stop submenu	Enter/play submenu	Select option or enter next level	Select option or enter next level
Next	Dial	Next song	Next song and play it	Move submenu	Move submenu
	Hold	Browser forward	Skip forward	Move forward	Move forward

Record mode

Key	Action	Stop state	Record state
Play	Press	Start to record	Pause record
	Hold	Shutdown	Stop record
Mode	Press	Enter record submenu	X
	Hold	Enter main menu	X

FM mode

Key	Action	FM status	FM submenu
Play	Hold	Shutdown	Shutdown
	Press	Channels have been saved: Next channel Channels have not been saved: X	Exit menu
Mode	Long press	Enter main menu	Enter main menu
	Press	Enter submenu	Confirm current option or enter submenu
Next	Dial	Increase 100KHz gradually or stop	Move submenu
	Hold	Increase 100KHz search continuously	Move forward continuously
Last	Dial	Decrease 100KHz gradually or stop	Move submenu
	Hold	Decrease 100KHz search continuously	Move backward continuously
Vol+	Press	Increase volume by one step	X
	Hold	Increase volume continuously	X
Vol-	Press	Decrease volume by one step	X
	Hold	Decrease volume continuously	X

5. PLAYING MUSIC

Adding and Deleting Files

To add or delete music files from your PC or Notebook computer to your MP3 player, simply connect the unit to the USB port of your PC or Notebook computer, click open the “Removable Disk” drive then you can add or delete files. Before you disconnect the player, please follow these steps to avoid possible file loss:

- 1) Double click the “Safely Remove Hardware icon” in the dialog box.
- 2) Click stop and the next dialog box appears on the display.
- 3) Click “OK”, then you can unplug the unit safely.

How to use add DRM music

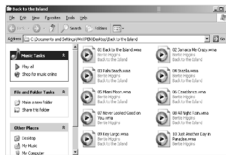
- 1). Connect player to PC, after 10 seconds a dialog will be appear, select "Take no action" or click "Cancel" button to continue.
- 2). Open "My Computer", clean up the device as the following steps:



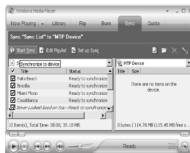
- a). Click the MTP device icon use the right button of the mouse, and then select "Format";
- b). Waiting for the format processing until finish.



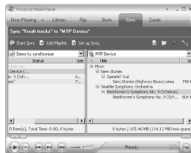
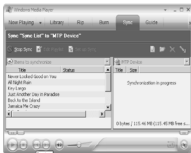
- 3). Run "WMP10"(Windows Media Player 10), the "MTP" device will be discover. Select "Sync", and then open the local folder where your music files saved.



- 4). Select all music you want to sync to player, and drag them to the "SyncList" on the left side of WMP 10, click "Start Sync" to began download:



- 5). When finish downloading, you can see the music files on the right side of WMP 10.



Browser "My Computer", you can see the files already downloaded to player.



6). Disconnect the player, it will make ID3 Playlist automatic, this will cost about 8 seconds.



7). Then the player will process DRM licence, it will cost 5~10 seconds.

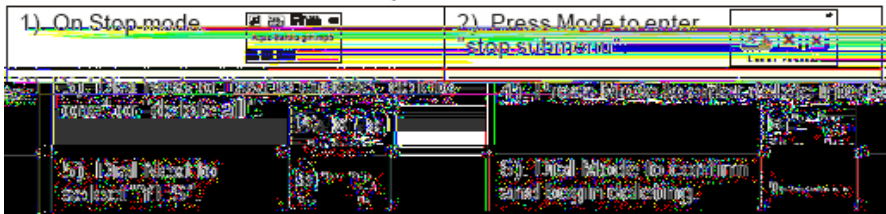


How to play

At first, you must enter into System setup and setup the "DRM Time", set it to current time, otherwise the DRM music can't play accurately. After setup "DRM Time", you can go back to music mode to play and listen to music.

Delete file in (stop submenu) mode

Files can be deleted under their respective modes:












"Delete all" will delete all files of the current mode under the current directory. (For example, only music files will be deleted if you choose Delete All under the music mode)

⚠ Attention: you must eject player from USB if you delete files on PC, or it will tell you "the files are not deleted".

Simple operation

1). Connect earphone plugging the pin of earphone into earphone jack.	2). Start up player and enter "Music mode" by holding PLAY momentarily; press PLAY to play music.
3). Choose music. Last: choose last song. Next: choose next song.	4). Control volume. VOL+ : increase volume. VOL- : decrease volume.
Attention: All keys have no effect if keyboard is locked. ◇ Player will shut down automatically if set "Power Off/power save mode" time.	

Equalizer mode

1). Playing music 	2). Press EQ to change Equalizer. 
3). Instruction for all kinds of sound effect (EQ):  (Natural effect, Natural)  (Rock effect, Rock)  (POP effect, Pop)  (Classical effect, Classical)  (Soft effect, Soft)  (Jazz effect, Jazz)  (Heavy bass, DBB)	



Display synchronized lyrics (Karaoke function)

This player supports “LRC” files. (Search online for “LRC lyrics”, play song and lyrics simultaneously.)




- How to use lyric files:

Keep the names of lyric file and song the same. For example: Name of song: Jay-Sky.mp3; Name of lyric file: Jay-Sky.lrc

- How to know whether a song has lyrics:

If there is a lyric file matching the song, the icon  on the upper left corner of music mode should change to 




- How to display the lyrics:

1). Find lyric match with song:		2). Press and hold Mode to enter lyric interface.	
3). Display lyrics.		4). Return to music mode by pressing Mode.	
5). Cycle lyrics manually: Turn lyrics forward or backward by pressing VOL+ or VOL-			

6. VOICE RECORDING

NOTE: Make sure batteries have enough energy for recording.
Ninety-nine recorded files can be saved in every directory.









Record mode

1). Enter main menu.		2). Dial Next to choose record mode.	
3). Press Mode to enter record mode.		4). Press Play to start recording.	
5). Other operations use steps 1 through 3.		6). Voice recordings are saved in the current directory; set in "stop record/submenu/ directories of main disk"	

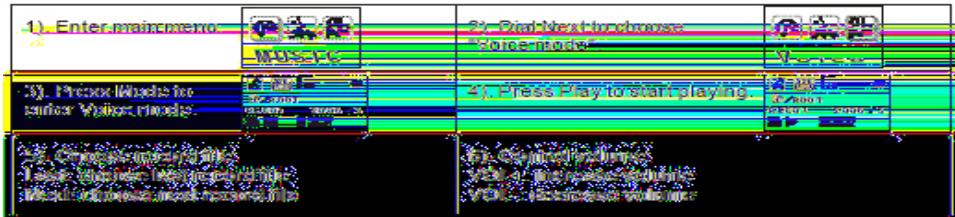
⚠ If "The space is full" displays, there is no more space for new files; delete other files to open more space.

⚠ If "The directory is full" displays, there are 99 record files in the current directory; delete files or switch to another directory.

Choose record type

1). At the interface of stop record.		2). 2. Press Mode to enter record submenu.	
3). Dial Next, choose the submenu "record type":		4). Press Mode to enter the option:	
5). Dial Next to choose record type.		6). Press Mode to confirm your choice.	
7). Press Play to start recording (VOR can pause recording).		8). Record type:  : high-quality, WAV format  : long recordings ACT format  : high-quality, sound control, WAV  : long records, sound control, ACT	

Playing Recorded Files



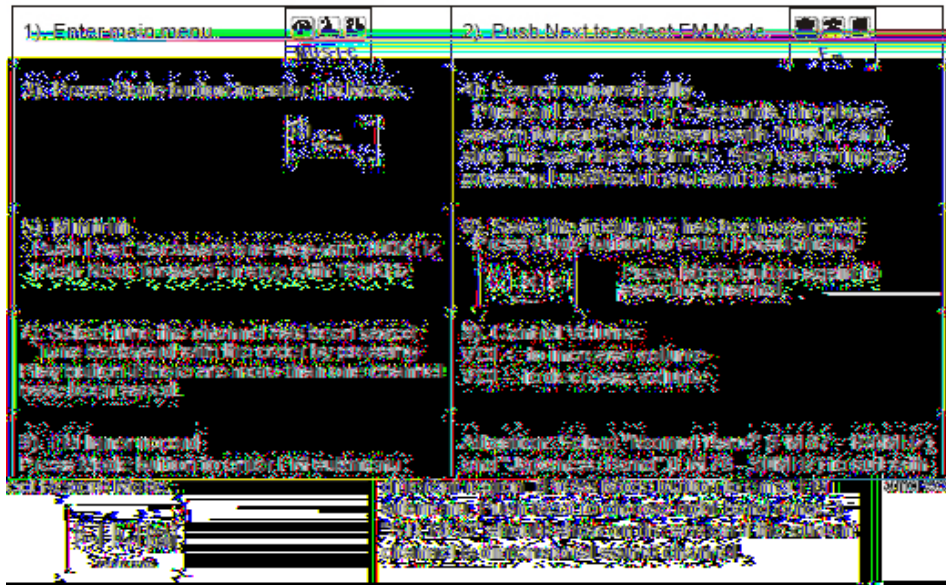
7. TRANSFERRING RECORDED FILES TO PC

Files recorded into the player in ACT format can be changed into WAV format with the installation program:

- 1). Run "Sound Converter", click "open"
- 2). Choose the ACT files you want to change
- 3). Click "Transform" to start transforming to WAV files

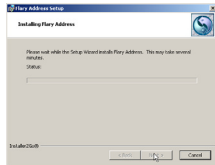
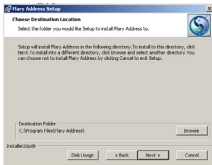
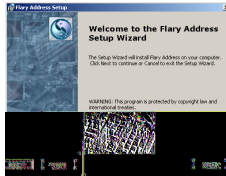
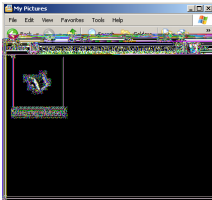
Besides transforming ACT into WAV, this tool can also play files of WAV and MP3.

8. USING THE FM RADIO

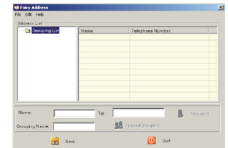
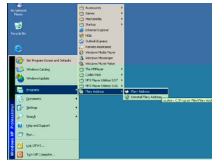


9. TELEPHONE BOOK

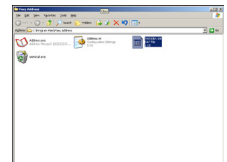
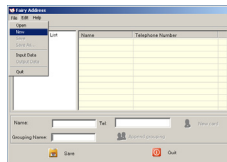
First time, the user can find the file 'Setup_enu_v1.1.exe' in drive disc CD. Then install this software on the PC as following steps



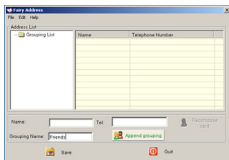
Connect the mp3 with the PC, pressing the start menu to find the Flary Address software:



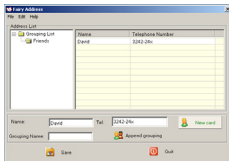
Select the file menu to choose the new, and then you will find the file 'C:\Program Files\Flary\TelAddbk.dat', then copy the file in your mp3



Select the file menu to choose the Input Data to find the file (TelAddbk.dat) in your mp3, and then press the open button.
Fill in team name in the blank and press the Append Grouping button:



Select the team you added, and then key in the Name and the TEL you want to add.
Press the New Card button and you can see the name and Tel No. in the right blank.









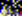
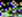
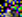

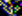
Add the whole information as the above steps:
Press the Save button and Quit. Disconnect the mp3 to PC.
Enter the main menu to select Telephone mode and you will find you added Tel information.

10. SYSTEM SETUP

This section explains how to set system parameters; each option may change after a firmware upgrade.

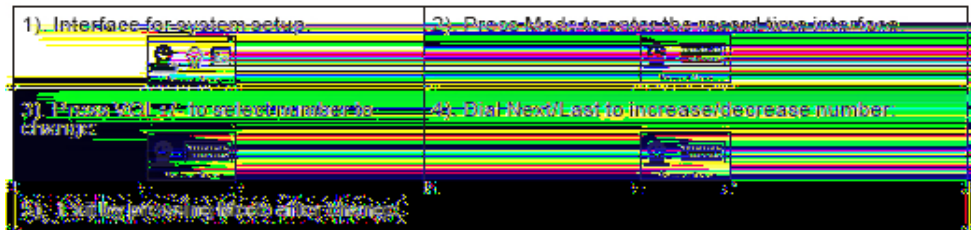
1). Enter main menu.		2). Dial Next to choose "System setup".	
3). Press Mode to enter "System setup".			

Brief introduction to each option


 Record time	Set save time and date for record files
 Backlight	The number of seconds the display light stays on
 Language	Set different language
 Power Off	Set a timer to shut player down automatically
 Equalizer	Set different equalizer parameters
 Contrast	Adjust the contrast of the display screen
 Gain	Set the Master equalizer function
 Memory Info	View the memory space filled time (0-100% exit percent)
 Firmware Update	Display the version of installed firmware
 Firmware Upgrade	Modularly download and upgrading firmware
 Help	Get the function of interface

Detailed Operating Instructions

Set "Record Time"



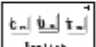
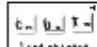


Set Backlight Time

1). Interface for setting system.	
3). Press Mode to enter interface.	2). Dial Next to choose "Backlight".
5). To exit press Mode after change.	4). Dial Next/Last to adjust time.

Detailed Operating Instructions

Set Language

1). Interface for setting system. 	2). Dial Next to select "Language". 
3). Press Mode to enter interface. 	4). Dial Next/Last to select language. 
5). To exit press Mode after change.	

Set Power Off

See backlight time set instructions for details

- » Power-save mode shuts unit down automatically if during the set time no keys are pressed and the player is stopped

Set Replay Mode

Press Mode to enter interface, Dial to choose:

- "Manual mode" denotes that you set a pause manually;
- "AUTO mode" denotes that it can pause automatically in replay.

Adjust Contrast

See “Backlight time”, operations are the same.

Online Mode

Operating systems earlier than Windows 2000 Service Pack 4 cannot support two partitions. To display chosen disk after connected to PC, You need to choose which disk you want to use between “single normal disk” and “single cryptographic disk” after use the function of “dream space”.

Memory Info


The number denotes capacity of disk, percentage denotes the space used.

Firmware Version

For view the current edition of firmware of player.

Firmware Upgrade

Enter this interface to upgrading your firmware.

 Advanced Tip: Exit menus rapidly by pressing Play after setting options. This function works on any menu.

11. USING THE USB DISK FUNCTIONS

Using the USB disk function:

This player has a standard USB function, supports Windows98 (a driver needs to be installed), Windows 2000 and newer (drivers need not to be installed), MacOS X 10.3 or Linux Red Hat 8.0 or newer. This player can be supplied power via USB, and can be played without batteries. From the main menu, choose the work mode you want and enter it. (To enter the main menu from Standby, press Mode.)

To connect with PC, plug into USB connector. The player has three display modes:

(1). Standby State

(2). Downloading state

(3). Uploading Mode

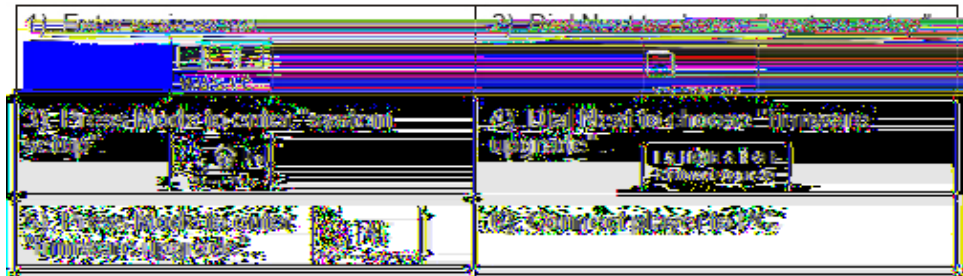


New folders

This machine supports up to ninety-nine one-level folders created by the user.

12. UPGRADING THE PLAYER

The system firmware of this player can be upgraded with the utility installed on your PC.



- 7) Run the upgrade tool “MP3 Player Update” on the computer, click the button called ... “Choose new edition of firmware file”.
- 8) Choose new firmware from the CD, or download from the homepage of the factory.
- 9) Click the “begin upgrade” button to start the upgrade.
- 10) Upgrade should be complete, follow prompts displayed on player:







- ⚠ Upgrades for firmware are for improvement and optimization of the performance of ... the player. It could impact normal operation if you fail to upgrade firmware.
- ⚠ Upgrading the firmware could cause the player to function incorrectly if not done properly. Please read the instructions before you begin. This operation is meant for . people who have some computer experience.
- ⚠ Upgrade software for this player is not suited for other series of players.

13. MISCELLANEOUS SETTINGS

Choosing different directories (stop submenu)





In order to play and manage sorted files, users can put files into directories (directories need to be created beforehand). This player supports ninety-nine one-level subdirectories


<p>1). Directories can be made under record, stop and play modes.</p> 	<p>2). Press Mode to enter "Stop submenu".</p> 
<p>3). Press Mode again to enter choose directories interface.</p> 	<p>4). Dial Next or Last to choose directories. To select a chosen directory press Mode.</p> 

Attention: Directories within a mode are independent of the other modes' directories. They may be given the same name and same settings as directories in other modes, but they will not intersect or otherwise correspond.

Play mode (play submenu)





You can choose different play modes while playing music or record files.

 Normal	Play all the music in normal mode
 Repeat One	Repeat to play one single music file
 Play Directory	Play all the music in current folder
 Repeat Folder	Play the music in all folders



Play speed (Play submenu)

You can choose different play speeds for MP3 files and record files.

1). Playing music.		2). Press Mode to enter submenu.	
3). Dial Next to choose "Tempo rate".		4). Press Mode to enter "Tempo rate" menu.	
5). Dial Next to speed up, Last to slow.			

Attention:The speed setting will apply to all songs until changed.

Replay mode (Play submenu)



Enter by pressing “REC/A-B” directly or from submenu.


A-B replay




NOTE: Under Replay mode, set “Tempo rate” directly by pressing VOL+ or VOL-.

Follow-read (play mode not have this function)


1). Replaying between A-B.		2). Dial Next to enter Follow-read mode.	
----------------------------	-----------------------------------------------------------------------------------	------------------------------------------	------------------------------------------------------------------------------------


3). It begins to record the voice of user when
Replay icon A-B changes to follow-read icon ,
length is the same as the time of the A-B replay.

4). Play original voice if the time ends and the
icon changes to , dial next to enter this
function at this time.

NOTE: Return to "A-B replay" by dialing Last under this mode.

Contrast function (play mode does not have this function)

1). The reread icon displays as , after
entering this function. It plays original sound.

2). Icon changes to  after playing original sound.
Now it plays the follow-read sound of user.

3). Plays original sound again after playing follow-read sound of user, repeats until Mode is
pressed to exit.

NOTE: Dial Last to go back to "Follow-read function".

Replay times (Play submenu)

The replay times determines how many times it should replay A-B before exiting.

Replay separation (Play submenu)

Replay separation determines the number of seconds between plays.

14. IMPORTANT INSTRUCTIONS

Function of “Dream space”

In the past, MP3 users who wanted others to see his individual data could only delete their privacy settings while friends borrowed his MP3. Now, the function of “dream space” solves that problem. Using the included utilities, users can separate the disk into two partitions with optional proportions. Two drives will show up on the computer (Windows 2K needs SP4 or you will find one disk only). Choose “single normal disk” or “single encrypted disk” under “system setup/online mode” and encrypt one of the disks to hide the content. This data can not be viewed without a password. This is “dream space”.

- 1). Connect player to PC;
- 2). Run the MP3 player disk tools;
- 3). Format first, choose the “encrypt subarea” option, choose appropriate content;
- 4). Input username at “new username”, input password at “new password”, input the same password at “confirm password”, click “start” to begin the partitioning;
- 5). Finish the partition and follow the prompts;
- 6). PC will ask to restart, press “Yes”;
- 7). You will find two disks after rebooting (Win 2K SP3 and earlier will find one);
- 8). There are three files in the encrypted, two hidden files and an executable file;
- 9). Run “RdiskDecrypt.exe”, input username and password in dialogue box;
- 10). You must input user name and password every time you connect it with a PC.

Attention: Data in disk will be erased if you separate the disk into two sections, please back up the data on the disk beforehand. Uniting two disks into one disk will also clean out the data.

Warning: Do not lose your username and password. You can only erase the encrypted disk by uniting partitions, which will erase the files.

15. DEFINITIONS

WMA

Short for Windows Media Audio, WMA is Microsoft's digital music format. WMA is probably the most widely used format, universally supported by almost every online music service and digital music player (except Apple). WMA comes in both a copy-protected and non-protected version.

MP3 Short for Moving Pictures Experts Group-1, Layer 3, MP3 is still used as general terminology for any type of digital music file. In reality, MP3 is not the default format for most online stores and digital music players. Most online stores automatically convert MP3 files to their default format (WMA or AAC) before transferring the files to a digital music player.

16. TROUBLESHOOTING

No power	<ul style="list-style-type: none">☆ Check if the batteries are installed correctly;☆ Check if the USB connection is solid;☆ Check if the player has been started.
No sound in earphones	<ul style="list-style-type: none">☆ Check if the volume is turned down;☆ Check for a problem with the connection of earphones;☆ Ensure the cleanliness of the earphones;☆ Damaged MP3s can play differently, or not at all.
Unusual situation with the word displayed onscreen	<ul style="list-style-type: none">☆ Check whether you have chosen the right language.
Reception of FM is bad	<ul style="list-style-type: none">☆ Adjust the positions of earphone and player.☆ Shut down nearby electronics to reduce interference.☆ Use earphone as antenna.
Can not download music	<ul style="list-style-type: none">☆ Check if the USB line is broken or connected solidly;

* Check the digital format. Check the DRM time.

Note:

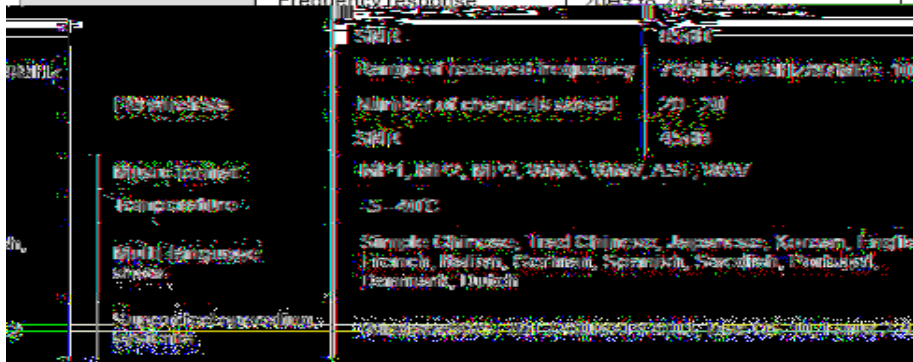
“DRM” Stands for “Digital Rights Management”. DRM refers to a collection of systems used to protect the copyrights of electronic media. These include digital music and movies, as well as other data that is stored and transferred digitally. For example, the Apple iTunes Music Store uses a DRM system to limit the number of computers that songs can be played on. Each audio file downloaded from the iTunes music store includes information about the owner of the file and how many times the file has been transferred. The protected files will not play on computers that have not been authorized to play the music.

17. SPECIFICATIONS

Connection to PC	USB2.0 full-speed	
EMS memory	Flash storage: 64MB - 1GB	
Power supply	Li-ion battery 3.7 V 530mA	
	The longest play time: 10H	
Record	Sampling rate	8KHz
	Record format	WMA (52Kbps), MP3 (64Kbps)
	Record time	32H(ACT, 128M Flash)

17. SPECIFICATIONS

MP3, WMA, WMV, ASF	Highest output of earphones	(L) 10mW+ (R) 10mW (32Ohm)
	MP3 bit rate	8K bps - 320K bps
	WMA, WMV, ASF bit rate	5K bps - 384K bps
	Frequency response	20Hz to 20KHz



NOTE: Specifications subject to change without notice

No part of this manual may be copied, republished, reproduced, transmitted or distributed in any way without prior written consent of Nextar, Inc. Any unauthorized distribution of this manual is expressly forbidden.

Nextar is a registered trademark of Tofasco, Inc.

Nextar may find it necessary to modify, amend or otherwise change or update this manual. We reserve the right to do this at any time, without any prior notice. All specifications and features are subject to change without notice. All screen shots shown are simulated and may not represent the actual screen on production units sold to consumers.

For instruction manuals, updated drivers or other information, be sure to visit our website at:

www.Nextar.com

Or write us at:

Nextar

1661 Fairplex Dr.

LaVerne, CA USA 91750

Copyright © 2006