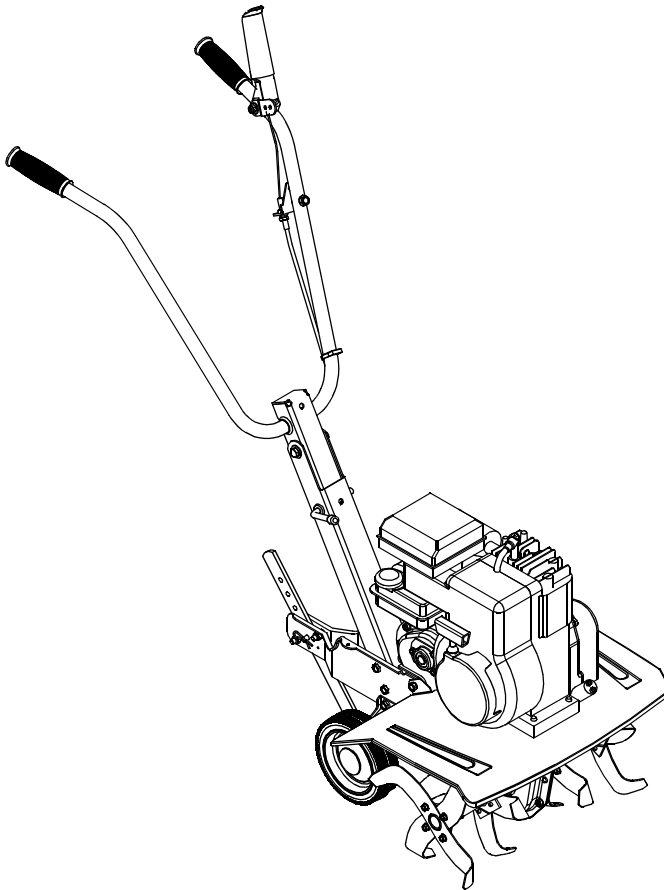




OPERATOR'S MANUAL



Front Tine Tiller Model 030

IMPORTANT: Read safety rules and instructions carefully before operating equipment.

Warning: This unit is equipped with an internal combustion engine and should not be used on or near any unimproved forest-covered, brush-covered or grass-covered land unless the engine's exhaust system is equipped with a spark arrester meeting applicable local or state laws (if any). If a spark arrester is used, it should be maintained in effective working order by the operator. In the State of California the above is required by law (Section 4442 of the California Public Resources Code). Other states may have similar laws. Federal laws apply on federal lands. A spark arrester for the muffler is available through your nearest engine authorized service dealer or contact the service department, P.O. Box 368022 Cleveland, Ohio 44136-9722.

MTD PRODUCTS INC. P.O. BOX 368022 CLEVELAND, OHIO 44136-9722

PRINTED IN U.S.A.

FORM NO. 770-10473
(1/2001)

TABLE OF CONTENTS

Content	Page
Important Safe Operation Practices.....	3
Assembling Your Tiller.....	5
Know Your Tiller.....	6
Operating Your Tiller.....	7
Making Adjustments.....	9
Maintaining Your Tiller.....	10
Troubleshooting.....	11
Parts List.....	12


FINDING MODEL NUMBER

This Operator's Manual is an important part of your new tiller. It will help you assemble, prepare and maintain the unit for best performance. Please read and understand what it says.



Before you start assembling your new equipment, please locate the model plate on the equipment and copy the information from it in the space provided below. The information on the model plate is very important if you need help from our Customer Support Department or an authorized dealer.

- You can locate the model number by looking down at the rear of the tiller. A sample model plate is explained below. For future reference, please copy the model number and the serial number of the equipment in the space below.

_____	_____
(Model Number)	(Serial Number)
 MTD PRODUCTS INC CLEVELAND, OHIO 44136	

Copy the model number here: _____

Copy the serial number here: _____

CALLING CUSTOMER SUPPORT

If you have difficulty assembling this product or have any questions regarding the controls, operation or maintenance of this unit, please call the Customer Dealer Referral Line.



Call **1- (330) 220-4MTD (4683)** or **1- (800)-800-7310** to reach a Customer Support representative. Please have your unit's model number and serial number ready when you call. See previous section to locate this information. You will be asked to enter the serial number in order to process your call.

SECTION 1: IMPORTANT SAFE OPERATION PRACTICES



WARNING: This symbol points out important safety instructions which, if not followed, could endanger the personal safety and/or property of yourself and others. Read and follow all instructions in this manual before attempting to operate this machine. Failure to comply with these instructions may result in personal injury. When you see this symbol— heed its warning.



WARNING: Engine exhaust, some of its constituents, and certain vehicle components contain or emit chemicals known to State of California to cause cancer and birth defects or other reproductive harm

DANGER: This machine was built to be operated according to the rules for safe operation in this manual. As with any type of power equipment, carelessness or error on the part of the operator can result in serious injury. This machine is capable of amputating hands and feet. Failure to observe the following safety instructions could result in serious injury or death.

Training

1. Read, understand, and follow all instructions on the machine and in the manual(s) before attempting to assemble and operate. Keep this manual in a safe place for future and regular reference and for ordering replacement parts.
2. Be familiar with all controls and their proper operation. Know how to stop the machine and disengage them quickly.
3. Never allow children under 14 years old to operate this machine. Children 14 years old and over should read and understand the operation instructions and safety rules in this manual and should be trained and supervised by a parent.
4. Never allow adults to operate this machine without proper instruction.
5. Keep bystanders, helpers, pets and children at least 75 feet from the machine while it is in operation. Stop machine if anyone enters the area.
7. Use only an approved gasoline container.
8. Extinguish all cigarettes, cigars, pipes and other sources of ignition.
9. Never fuel machine indoors.
10. Never remove gas cap or add fuel while the engine is hot or running.
11. Allow engine to cool at least two minutes before refueling.
12. Never over fill fuel tank. Fill tank to no more than ½ inch below bottom of filler neck to provide space for fuel expansion.
13. Replace gasoline cap and tighten securely.
14. If gasoline is spilled, wipe it off the engine and equipment. Move machine to another area. Wait 5 minutes before starting the engine.
15. Never store the machine or fuel container inside near an open flame, spark or pilot light (e.g. furnace, water or space heater, clothes dryer etc.).
16. Allow machine to cool 5 minutes before storing.

Preparation

1. Thoroughly inspect the area where the equipment is to be used. Remove all stones, sticks, wire, and other foreign objects which could be tripped over and cause personal injury.
2. Wear sturdy, rough-soled work shoes and close fitting slacks and shirt. Loose fitting clothes or jewelry can be caught in movable parts. Never operate this machine in bare feet or sandals.
3. Disengage clutch levers and shift (if provided) into neutral (“N”) before starting the engine.
4. Never leave this machine unattended with the engine running.
5. Never attempt to make any adjustments while engine is running, except where specifically recommended in the operator’s manual.
6. To avoid personal injury or property damage use extreme care in handling gasoline. Gasoline is extremely flammable and the vapors are explosive. Serious personal injury can occur when gasoline is spilled on yourself or your clothes which can ignite. Wash your skin and change clothes immediately.

Operation

1. Do not put hands or feet near rotating parts. Contact with the rotating parts can amputate hands and feet.
2. Do not operate machine while under the influence of alcohol or drugs.
3. Never operate this machine without good visibility or light. Always be sure of your footing and keep a firm hold on the handles.
4. Keep bystanders, helpers, pets, and children at least 75 feet from the machine while it is in operation. Stop the machine if anyone enters the area.
5. Be careful when tilling in hard ground. The tines may catch in the ground and propel the tiller forward. If this occurs, let go of the handle bars and do not restrain the machine.
6. Exercise extreme caution when operating on or crossing gravel surfaces. Stay alert for hidden hazards or traffic. Do not carry passengers.
7. Never operate the machine at high transport speeds on hard or slippery surfaces.
8. Exercise caution to avoid slipping or falling.

9. Look down and behind and use care when in reverse or pulling machine towards you.
 10. Start the engine according to the instructions found in this manual and keep feet well away from the tines at all times.
 11. After striking a foreign object, stop the engine, disconnect the spark plug wire and ground against the engine. Thoroughly inspect the machine for any damage. Repair the damage before starting and operating.
 12. Disengage all clutch levers and stop engine before you leave the operating position (behind the handles). Wait until the tines come to a complete stop before unclogging the tines, making any adjustments, or inspections.
 13. Never run an engine indoors or in a poorly ventilated area. Engine exhaust contains carbon monoxide, an odorless and deadly gas.
 14. Muffler and engine become hot and can cause a burn. Do not touch.
 15. Use caution when tilling near fences, buildings and underground utilities. Rotating tines can cause property damage or personal injury.
 16. Do not overload machine capacity by attempting to till soil to deep at to fast of a rate.
 17. If the machine should start making an unusual noise or vibration, stop the engine, disconnect the spark plug wire and ground it against the engine. Inspect thoroughly for damage. Repair any damage before starting and operating.
 18. Keep all shields, guards and safety devices in place and operating properly.
 19. Never pick up or carry machine while the engine is running.
 20. Use only attachments and accessories approved by the manufacturer. Failure to do so, can result in personal injury.
 21. If situations occur which are not covered in this manual, use care and good judgment. Contact your dealer or telephone 1-800-800-7310 for assistance and the name of your nearest servicing dealer.
3. Before cleaning, repairing, or inspecting, stop the engine and make certain the tines and all moving parts have stopped. Disconnect the spark plug wire and ground it against the engine to prevent unintended starting.
 4. Do not change the engine governor settings or over-speed the engine. The governor controls the maximum safe operating speed of the engine.
 5. Maintain or replace safety and instruction labels, as necessary.
 6. Follow this manual for safe loading, unloading, transporting, and storage of this machine.
 7. Never store the machine or fuel container inside where there is an open flame, spark or pilot light such as a water heater, furnace, clothes dryer etc.
 8. Always refer to the operator's manual for proper instructions on off-season storage.
 9. If the fuel tank has to be drained, do this outdoors.
 10. Observe proper disposal laws and regulations for gas, oil, etc. to protect the environment.

Your Responsibility

1. Restrict the use of this power machine to persons who read, understand and follow the warnings and instructions in this manual and on the machine.
2. The safety label on the tiller is reproduced below for your review. To ensure safe operation of the tiller, follow the instructions on all labels closely.



Maintenance & Storage

1. Never tamper with safety devices. Check their proper operation regularly.
2. Check bolts and screws for proper tightness at frequent intervals to keep the machine in safe working condition. Also, visually inspect machine for any damage.

SECTION 2: ASSEMBLING YOUR TILLER

IMPORTANT: This unit is shipped without gasoline or oil in the engine. Be certain to service engine with gasoline and oil, as instructed in the engine manual, before operating your tiller. (The engine manual is packed separately and shipped in the tiller carton.)

NOTE: Reference to right or left side of the tiller is observed from the operating position.

Removing Unit From Carton

- Remove staples, break glue on top flaps, or cut tape at carton end and peel along top flap to open carton. Remove loose parts (i.e., operator's manual, etc.) from carton.
- Cut along corners, lay carton down flat, and remove packing material. Roll or slide unit out of carton and check carton thoroughly again before discarding.
- Extend control cables to the rear of the tiller and lay them on the floor. Do not bend or kink cables.

Setting up the Tiller

- Disconnect the spark plug wire and move it away from the spark plug.
- Remove the handle lever from the handle.
- Lift up and pull back on the handle to raise to the operating position. Reinsert handle lever and tighten securely.
- Pull depth stake down into the operating position. Please refer to instructions in detail on page 8.

Check Cable Adjustment

- With the clutch lever disengaged, pull starter rope slowly several times. Tines should not turn. If tines do turn, the cable is not adjusted properly.
- To adjust cable, loosen bottom nut at cable bracket slightly to provide additional slack in cable wire while clutch is disengaged. See Figure 1 inset.
- Tighten top nut and check again for proper adjustment. See Figure 1 inset.

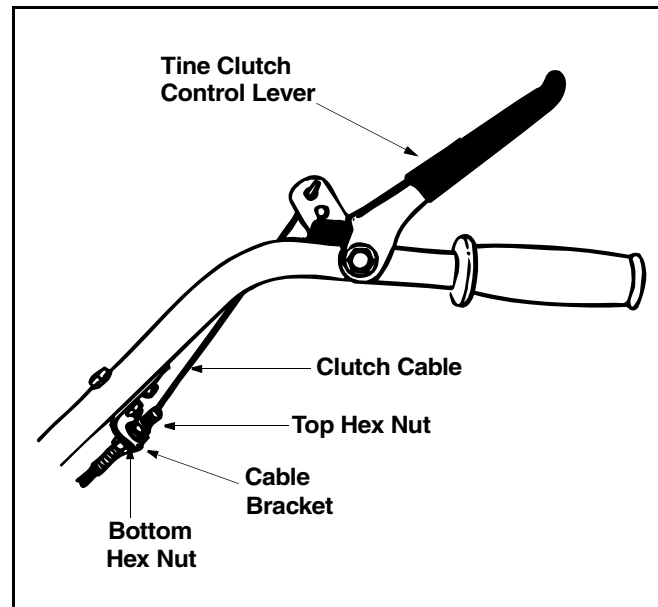
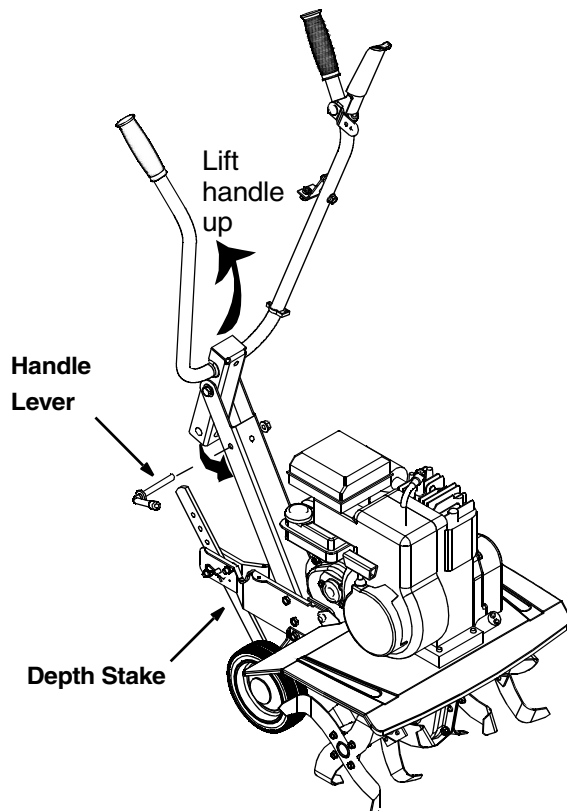


Figure 1

SECTION 3: KNOW YOUR TILLER

Read this operator's manual and safety rules before operating your tiller. Compare the illustrations in Figure 2 with your tiller to familiarize yourself with the location of various controls and adjustments. Save this manual for future reference.

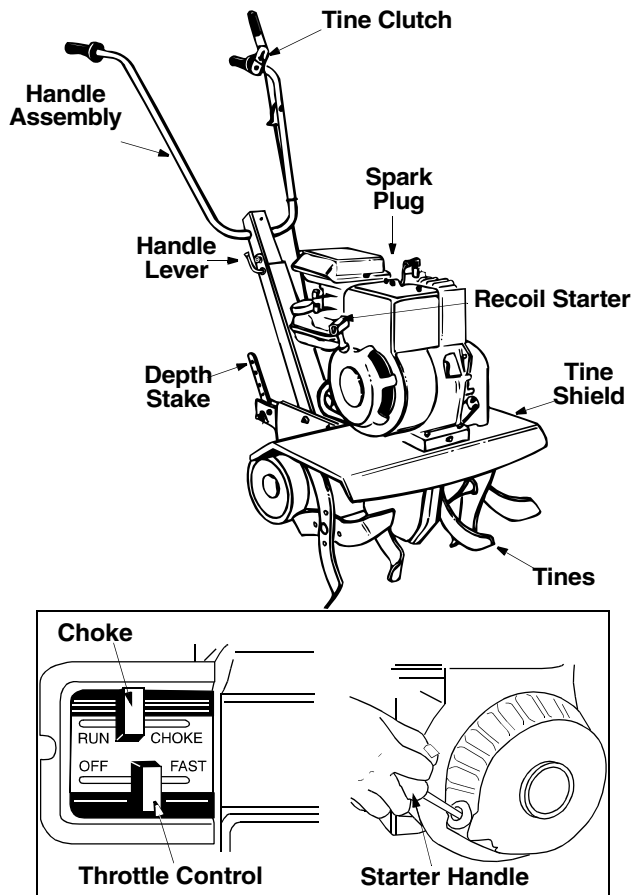


Figure 2

Throttle Control

The throttle control lever is located on the engine. It controls the engine's speed and stops the engine.

- With the throttle control pushed completely to the right, the carburetor is in START or FAST position. Use maximum engine speed for deep tilling.
- Pull the throttle control back to reduce engine speed to IDLE. Throttle control should be at IDLE for transporting the tiller.
- Pull the throttle completely back to stop the engine.

Choke Lever

The choke lever is located near the throttle control. It is used to enrich the fuel mixture when starting a cold engine.

Starter Handle

The starter handle is located on the engine and is used to manually start the engine.

Tine Clutch Control

The clutch control lever is located on the left handle. Squeezing the lever against the handle engages the tine drive. Release the lever to stop the tines from turning.

Depth Stake

The depth stake is located in the rear of the tiller and it controls the tilling depth. See page 8 for instruction on its adjustment.

Stopping Engine

- Move throttle control lever to STOP or OFF position.
- Disconnect spark plug wire from spark plug and ground against the engine.

SECTION 4: OPERATING YOUR TILLER

Before Starting

- Service the engine with gasoline and oil as instructed in the engine manual packed separately with your tiller. Read instructions carefully.



WARNING: Never fill fuel tank indoors with engine running or until the engine has been allowed to cool for two minutes after running.

- Check clutch adjustment as instructed on page 5.

Starting Engine



WARNING: Be sure no one is standing in front of the tiller while the engine is running or being started.

- Attach spark plug wire to spark plug. Make sure the metal cap on the end of the spark plug is fastened securely over the metal tip on the spark plug.
- Make sure that the tine clutch lever is disengaged.

- Place the throttle control in the FAST position.
- Move choke lever to CHOKE position. A warm engine requires little or no choke.
- Grasp starter handle and pull rope out slowly until engine reaches start of compression cycle (rope will pull slightly harder at this point). Let the rope rewind slowly.
- Pull rope with a rapid, continuous, full arm stroke. Keep a firm grip on starter handle. Let rope rewind slowly. Do not let starter handle snap back against starter. Repeat until engine starts.
- When engine starts, move choke lever on engine halfway between CHOKE and RUN. As the engine warms up, move the lever to RUN position.

Using Your Tiller

Your tiller is a precision-built machine for preparing seed beds, cultivating, furrowing, and mulching. The instructions below are designed towards your convenience in using the tiller.

- When tilling, leave approximately 8 inches of untilled soil between the first and second tilling paths, then make the third path between the first and second. See Figure 3.
- In some soils, the desired depth is obtained by going over the garden two or three times. In the latter case, the depth stake should be lowered before each succeeding pass over the garden.
- Passes should be made across the length and width of the garden alternately. See Figure 3. Rocks, which are turned up, should be removed from the garden area before proceeding with tilling.

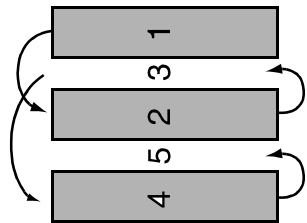


Figure 3

Using Depth Stake

Please refer to page 8 for instructions.

Handle Pressure

Further control of tilling depth and travel speed can be obtained by variation of pressure on the handles.

- A downward pressure on the handles will reduce the working depth and increase the forward speed.
- An upward pressure on the handles will increase the working depth and reduce the forward speed.

The type of soil and working conditions will determine the actual setting of the depth stake and the handle pressure required.

Transporting the Tiller

- To transport the tiller to or from the garden, pivot the depth stake forward and out of the way. With

the throttle control in SLOW position, the unit will walk freely on the lawn. If the operator does not allow the tiller to move freely, the unit will start to till the surface. See Figure 4.

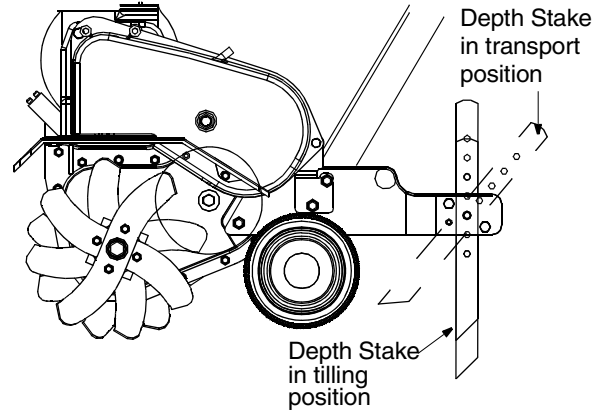


Figure 4

Cultivating

For cultivating, a two to three inch depth is desirable. With the outer tines in place on the equipment, the working width of the machine is 18 inches. With the outer tines removed for cultivation purposes, the working width may be reduced to 14 inches.

- To reduce the width of ground tilled, set the throttle to a slow walking speed.
- Remove the two self-tapping screws on the outside of the tines using a 3/8" wrench. Remove the first tine and replace the hardware to secure the rest.

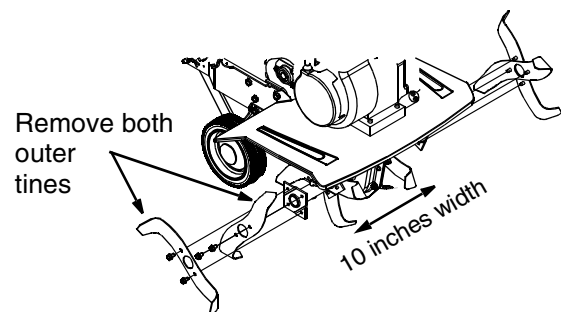
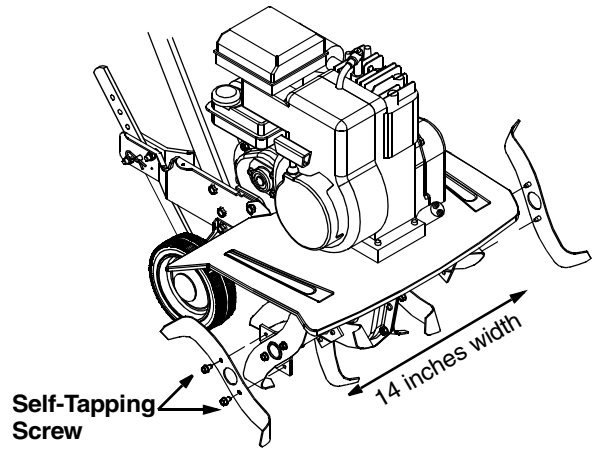


Figure 5

- Minimum tilling width is 10 inches. For that, you will have to remove both sets of outer tines. Remove these tines by removing the two self-tapping screws on the outside of the tines. See Figure 5.
- When laying out plant rows, be sure to allow enough width to permit cultivation between the rows. See Figure 6.

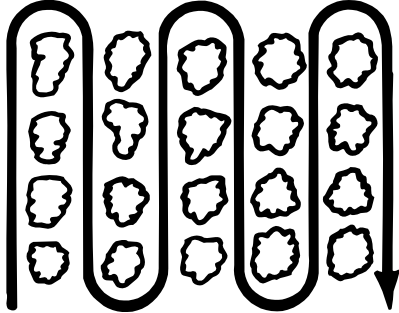


Figure 6

Other Uses

1. Your tiller can be used for preparation of lawn area for seeding. The tiller will prepare an evenly deep seed bed, hence allowing better lawn growth.
2. Your tiller may be used for loosening hard soil for excavation with a shovel. In this case, no tedious hand work will be necessary.
3. Your tiller may be used for mixing compost in the pile, or for mixing it with the soil in your garden. This should be done after the soil has been broken to the full working depth.

Stopping Engine

- Move throttle control lever to STOP or OFF position. Disconnect spark plug wire from spark plug and ground against the engine.

SECTION 5: MAKING ADJUSTMENTS



WARNING: Do not at any time make any adjustments without first stopping the engine and disconnecting the spark plug wire.

Carburetor



WARNING: If any adjustments are made to the engine while the engine is running (e.g. carburetor), keep clear of all moving parts. Be careful of heated surfaces and muffler.

Minor carburetor adjustments may be required to compensate for differences in fuel, temperature, altitude and load. To adjust carburetor, refer to the separate engine manual packed with your mower.

NOTE: A dirty air cleaner will cause an engine to run rough. Be certain air cleaner is clean and attached to the carburetor before adjusting carburetor.

Tine Clutch Control

Periodic adjustment of the belt tension may be required due to normal stretch and wear on the belt.

- To adjust, loosen top nut at the cable bracket slightly to take up some slack in the cable wire. Retighten the bottom nut against the bracket and check adjustment again.

Tine Width

The tilling width of the unit is 18 inches, but can be reduced to 14 inches. Refer to page 7 for instructions.

Depth Stake

The depth stake acts as a brake for the tiller and controls the depth and speed at which the machine will operate.

- Remove clevis pin and hairpin clip to raise or lower depth stake. See Figure 7.
 - a. When the depth stake is lower, forward speed of the machine is reduced, and the working depth increased. See Figure 7.
 - b. When the depth stake is raised, the forward speed is increased and the working depth of the machine is reduced. See Figure 7.
- The working depth of the machine may be predetermined by setting the depth stake and wheels. The wheels are about four inches from the ground when the tines and depth stake are resting on the ground. This setting will permit a working depth of about four inches.

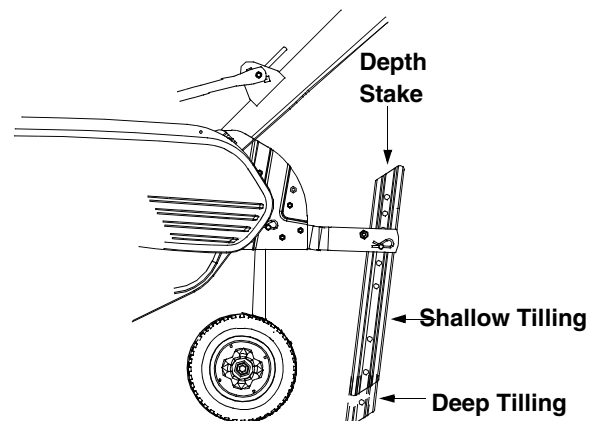


Figure 7

SECTION 6: MAINTAINING YOUR TILLER

Lubrication



Always stop engine and disconnect spark plug wire before cleaning, lubricating or doing any kind of maintenance on your tiller.

Pivot Points: Remove the belt cover and lubricate all moving parts and pivot points at least once a season.

Chain Drive: The chain case is lubricated and sealed at the factory.

Engine: Follow the engine manual for lubrication specifications and instructions.

Tines: Remove tines and lubricate shaft with light oil.

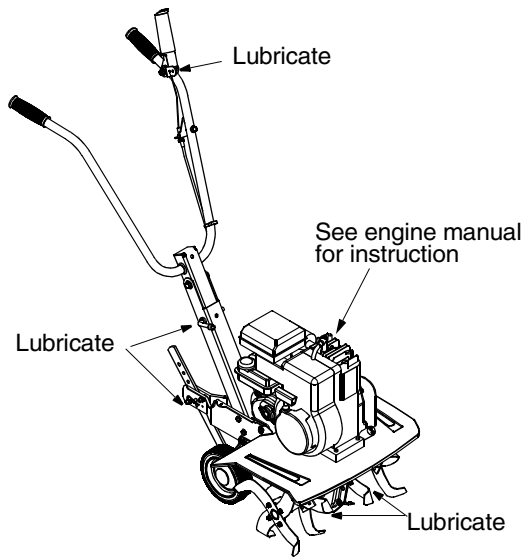


Figure 8

Cleaning

- Clean the engine regularly with a cloth or brush.
- Keep the cooling system (blower housing area) clean to permit proper air circulation. Be certain to remove all dirt and combustible debris from muffler area.
- Clean the underside of the tine shield after each use. Dirt washes off the tines easier if washed off immediately.

Replacing Belt

- Disconnect and ground spark plug wire against the engine.
- Lift the belt cover assembly off the tiller. Be careful not to bend or kink the clutch cable.
- Remove the belt and position the new belt on engine pulley and chain case pulley.

NOTE: Upon reassembly of belt cover, place the belt over top of the idler pulley and between engine pulley and weld pin on belt cover assembly. See Figure 9.

- Fasten belt cover assembly in position. Secure with the hardware removed earlier.

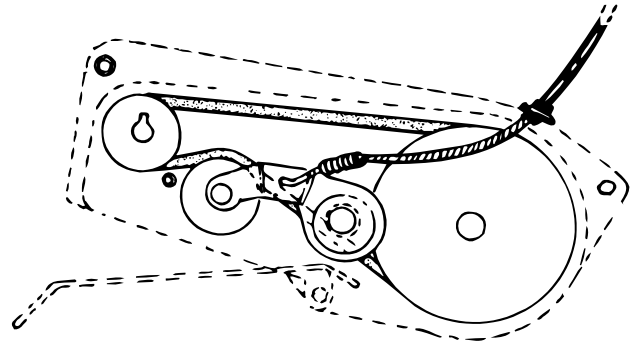


Figure 9

Engine

Refer to the separate engine manual for all engine maintenance instructions.

- Maintain engine oil as instructed in the engine manual.
- Poor engine performance and flooding usually indicate that the air cleaner needs to be serviced. For instructions, refer to the engine manual.
- The spark plug should be cleaned and the gap reset once a season. For instructions, refer to the engine manual.

Off-Season Storage

If the tiller will not be used for a period longer than 30 days, the following steps should be taken to prepare the tiller for storage.

- Clean the exterior of engine and the entire tiller thoroughly.
- Refer to the engine manual for correct engine storage instructions.
- Remove tines from the tine shaft and lubricate shaft with oil.
- Wipe tines with oiled rag to prevent rust.
- Store tiller in a clean, dry area. Do not store next to corrosive materials, such as fertilizer.

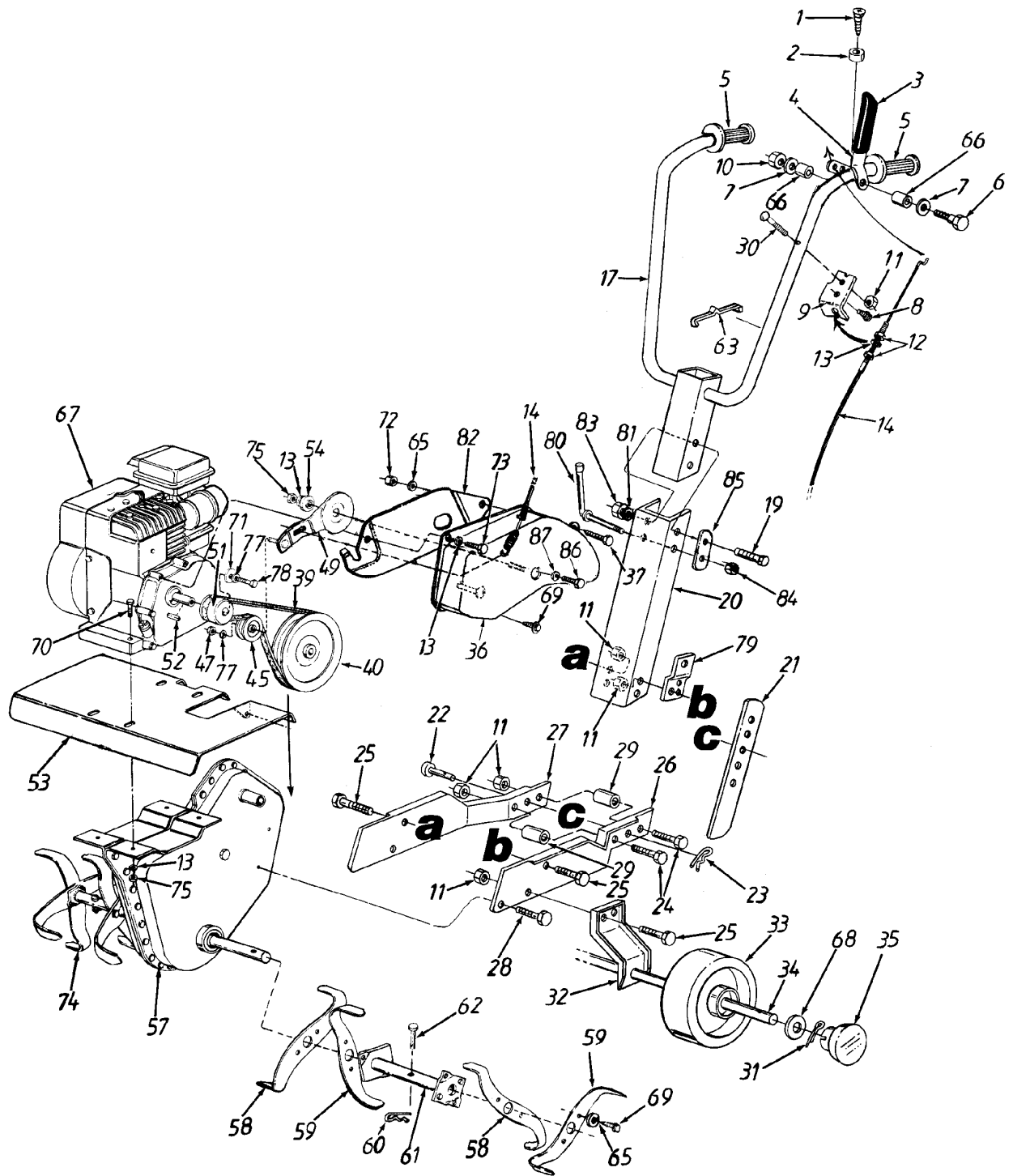
NOTE: When storing any type of power equipment in an unventilated or metal storage shed, care should be taken to rustproof the equipment. Using a light oil or silicone, coat the equipment, especially any springs, bearings and cables.

SECTION 7: TROUBLESHOOTING

Problem	Cause	Remedy
Engine fails to start	<ol style="list-style-type: none"> 1. Spark plug wire disconnected. 2. Fuel tank empty or stale fuel. 3. Throttle control lever not in correct starting position. (If equipped) 4. Choke not in ON position. 5. Blocked fuel line. 6. Faulty spark plug. 7. Engine flooded 	<ol style="list-style-type: none"> 1. Connect wire to spark plug. 2. Fill tank with clean, fresh gasoline. 3. Move throttle lever to start position. 4. Move switch to ON position. 5. Clean fuel line. 6. Clean, adjust gap, or replace. 7. Wait a few minutes to restart, but do not prime.
Engine runs erratic	<ol style="list-style-type: none"> 1. Spark plug wire loose. 2. Unit running on CHOKE. 3. Blocked fuel line or stale fuel. 4. Vent plugged. 5. Water or dirt in fuel system. 6. Dirty air cleaner. 7. Carburetor out of adjustment. 	<ol style="list-style-type: none"> 1. Connect and tighten spark plug wire. 2. Move choke lever to OFF position. 3. Clean fuel line; fill tank with clean, fresh gasoline 4. Clear vent. 5. Drain fuel tank. Refill with fresh fuel. 6. Clean following engine manual. 7. Refer to engine manual.
Engine overheats	<ol style="list-style-type: none"> 1. Engine oil level low. 2. Dirty air cleaner. 3. Air flow restricted. 4. Carburetor not adjusted properly. 	<ol style="list-style-type: none"> 1. Fill crankcase with proper oil. 2. Clean air cleaner. 3. Remove blower housing and clean. 4. Refer to engine manual.
Tines do not engage	<ol style="list-style-type: none"> 1. Foreign object lodged in tines. 2. Tine clevis pin(s) missing. 3. Pulley and idler not in correct adjustment. 4. Control cable not adjusted properly. 5. Belt worn and/or stretched. 	<ol style="list-style-type: none"> 1. Stop tiller completely, check and discard foreign object. 2. Replace tine clevis pin(s). 3. Take unit to authorized service dealer. 4. Adjust control cable. 5. Replace belt.

NOTE: For repairs beyond the minor adjustments listed above, contact your nearest service dealer.

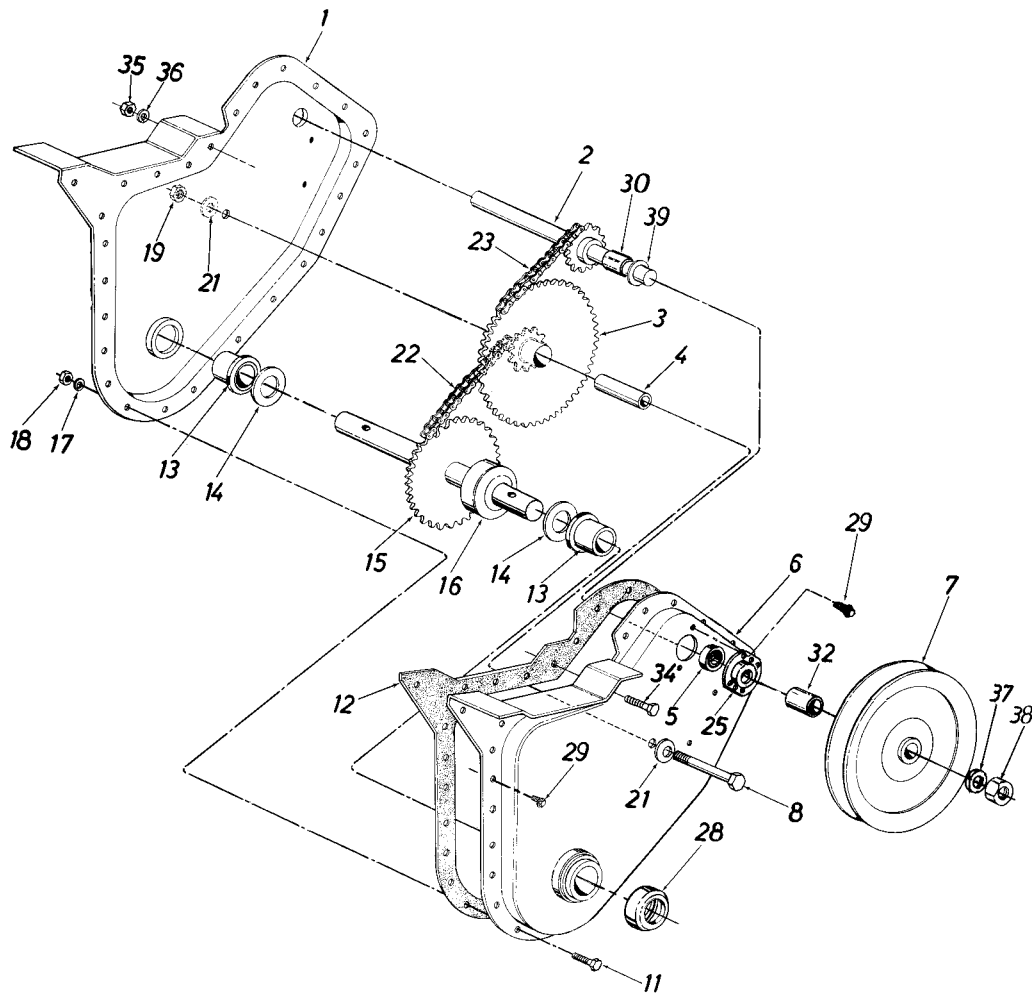
SECTION 8: PARTS LIST FOR MODEL SERIES 030



Model Series 030

Ref. No.	Part No.	Part Description	Ref. No.	Part No.	Part Description
1	710-0779A	Tap Scr. #10 x 1/2" Lg.	45	756-0199	Flat Idler Pulley
2	720-0263	Rubber Bumper	47	712-0116	Hex Jam L-Nut 3/8-24 Thd.
3	731-0473	Vinyl Grip	49	784-0016	Idler Arm Ass'y.
4	686-0002	Clutch Lever Ass'y.	51	756-0286	Engine Pulley
5	720-0233	Handle Grip	52	714-0122	Square Key 3/16" x .75" Lg.
6	710-0501	Hex Bolt 1/4-20 x 2" Lg.*	53	786-0148A	Tine Shield
7	736-3090	FI-Wash. 1/4" I.D.	54	736-0289	Washer-Bushing
8	710-1201	Hex Tap Scr. 1/4-20 x 1/2" Lg.	57	686-0093A	Chain Case Ass'y. Comp.
9	15093C	Cable Bracket	58	04922	R.H. Tine Blade
10	712-0324	Lock Nut 1/4-20 Thd.	59	04923	L.H. Tine Blade
11	712-0429	Lock Nut 5/16-18 Thd.	60	714-0149B	Hairpin Cotter
12	712-0256	Hex Jam Nut 5/16-24 Thd.	61	04918	Adapter Ass'y.-Tine
13	736-0119	L-Wash. 5/16" I.D.*	62	711-0702	Clevis Pin
14	746-0926	Clutch Control Cable	63	726-0306	Cable Tie-Plastic
17	649-0018	Handle Ass'y.	65	736-0329	L-Wash. 1/4" I.D.*
19	710-3022	Hex Bolt 3/8-16 x 2.75	66	750-0846	Spacer
20	786-0146	Handle Channel-Frame	67	—	Engine
21	04764	Depth Stake	68	736-3050	FI-Wash. .406 I.D.
22	711-0653	Clevis Pin	69	710-0599	Tap Scr. 1/4-20 x 1/2" Lg.
23	714-0145	Hairpin Cotter	70	710-0502A	Hex Bolt 3/8-16
24	710-0376	Hex Bolt 5/16-18 x 1" Lg.*	71	736-0258	FI-Wash. 3/8" I.D. x 1" O.D.
25	710-0759	Hex Bolt 5/16-18 x 5/8" Lg.*	72	712-0287	Hex Nut 1/4-20 Thd.*
26	786-0011	L.H. Frame Half	73	710-0107	Hex Bolt 5/16-24 x .5" Lg.
27	786-0010	R.H. Frame Half	74	04921	Tine Blade Ass'y. Comp.
28	710-0607	Hex Tap. Scr. 5/16-18 x 1/2" Lg	75	712-0267	Hex Nut 5/16-18 Thd.*
29	750-0845	Spacer	77	736-0169	L-Wash. 3/8" I.D.*
30	710-1090	Hex Bolt 5/16-18 x 1-1/4" Lg.	78	710-0152	Hex Bolt 3/8-24 x 1" Lg.
31	714-3017	Cotter Pin	79	786-0046	Belt Cover Bracket
32	786-0012	Wheel Bracket	80	784-0190	Handle Adj. Crank
33	634-0013	Wheel-6"	81	736-0300	FI-Wash. .385" I.D. x .87" O.D.
34	738-0855	Axle-Wheel	82	786-0153	Belt Cover-Rear
35	720-0258	Hub Cap	83	712-0431	Hex L-Nut 3/8-16 Thd.
36	786-0151A	Belt Cover	84	712-0379	Hex Flange L-Nut 3/8-24 Thd.
37	710-0751	Hex Bolt 1/4-20 x .620" Lg.*	85	784-0191	Retainer Bracket
39	754-0216	V-Belt	86	710-3008	Hex Bolt 5/16-18 x .75" Lg.
40	756-0996	Pulley-Chain Case	87	736-0264	FI-Wash. .330 I.D.

Model Series 030



Ref. No.	Part No.	Part Description	Ref. No.	Part No.	Part Description
1	686-0085	Chain Case Ass'y.—R.H.	21	736-0219	Bell-Wash. .406" I.D.
2	611-0057	Input Shaft Ass'y.	22	713-0215	Chain #420 1/2" Pitch 38 Links
3	04757A	Hub and Sprocket Ass'y.		713-0154	#420 Master Link
4	750-0351	Bearing Inner Race	23	713-0216	Chain #35 .375" Pitch 50 Links
5	741-0155	Ball Bearing		713-0139	#35 Master Link
6	686-0087	Chain Case Ass'y.—L.H.	25	05034A	Bearing Housing
7	756-0996	Pulley—Chain Case	28	721-0392	Shaft Seal
8	710-0369	Hex Bolt 3/8-24 x 2.5"	29	710-0599	Hex Wash. Hd. Self-Tap Scr.
11	710-0195	Hex Bolt 1/4-28 x .625"	30	750-0471	Spacer .63" I.D. x .77" O.D. x .38"
12	721-0156A	Gasket	32	750-0999	Spacer .647 x .77"
13	741-0227	Flange Brg. .879" I.D.	34	710-3008	Hex Bolt 5/16-18 x .75" Lg.*
14	736-0265	Fl-Wash. .88" I.D. x 1.5"	35	712-0267	Hex Nut 5/16-18 Thd.*
15	04920	Tine Shaft Ass'y.	36	736-0119	L-Wash. 5/16" I.D.*
16	750-0354A	Spacer 7/8" I.D.	37	736-0105	Bell-Wash. .38" I.D. x .88" O.D.
17	736-0329	L-Wash. 1/4" I.D.*	38	712-0379	Hex Flange L-Nut 3/8-24 Thd.
18	712-0138	Hex Nut 1/4-28 Thd.*	39	736-0302	Washer .652 I.D.
19	712-0116	Hex Ins. L-Nut 3/8-24 Thd.	—	686-0093A	Chain Case Ass'y. Comp.

YOUR NOTES

Date	Comments

YOUR NOTES

Date	Comments

MANUFACTURER'S LIMITED WARRANTY FOR:



The limited warranty set forth below is given by MTD PRODUCTS INC ("MTD") with respect to new merchandise purchased and used in the United States, its possessions and territories.

MTD warrants this product against defects in material and workmanship for a period of two (2) years commencing on the date of original purchase and will, at its option, repair or replace, free of charge, any part found to be defective in material or workmanship. This limited warranty shall only apply if this product has been operated and maintained in accordance with the Operator's Manual furnished with the product, and has not been subject to misuse, abuse, commercial use, neglect, accident, improper maintenance, alteration, vandalism, theft, fire, water or damage because of other peril or natural disaster. Damage resulting from the installation or use of any accessory or attachment not approved by MTD Products Inc. for use with the product(s) covered by this manual will void your warranty as to any resulting damages.

Normal wear parts or components thereof are subject to separate terms as follows: All normal wear part or component failures will be covered on the product for a period of 90 days regardless of cause. After 90 days, but within the two year period, normal wear part failures will be covered ONLY IF caused by defects in material or workmanship of OTHER component parts. Normal wear parts and components include, but are not limited to, belts, blades, blade adapters, grass bags, rider deck wheels, seats, snow thrower skid shoes, shave plates and tires. Batteries are covered by a 90-day limited replacement warranty.

HOW TO OBTAIN SERVICE: Warranty service is available, WITH PROOF OF PURCHASE THROUGH YOUR LOCAL AUTHORIZED SERVICE DEALER. To locate the dealer in your area, please check for a listing in the Yellow Pages or contact the Customer Service Department of MTD PRODUCTS INC by calling 1-800-800-7310 or writing to P.O. Box 368022, Cleveland, Ohio 44136-9722.

This limited warranty does not provide coverage in the following cases:

- a. The engine or component parts thereof. These items carry a separate manufacturer's warranty. Please refer to the applicable manufacturer's warranty on these items.
- b. Log splitter pumps, valves and cylinders have a separate one year warranty.

- c. Routine maintenance items such as lubricants, filters, blade sharpening and tune-ups, or adjustments such as brake adjustments, clutch adjustments or deck adjustments; and normal deterioration of the exterior finish due to use or exposure.
- d. MTD does not extend any warranty for products sold or exported outside of the United States of America, its possessions and territories, except those sold through MTD's authorized channels of export distribution.

No implied warranty, including any implied warranty of merchantability or fitness for a particular purpose, applies after the applicable period of express written warranty above as to the parts as identified. No other express warranty or guaranty, whether written or oral, except as mentioned above, given by any person or entity, including a dealer or retailer, with respect to any product shall bind MTD. During the period of the Warranty, the exclusive remedy is repair or replacement of the product as set forth above. (Some states do not allow limitations on how long an implied warranty lasts, so the above limitation may not apply to you.)

The provisions as set forth in this Warranty provide the sole and exclusive remedy arising from the sales. MTD shall not be liable for incidental or consequential loss or damages including, without limitation, expenses incurred for substitute or replacement lawn care services, for transportation or for related expenses, or for rental expenses to temporarily replace a warranted product. (Some states do not allow the exclusion or limitation of incidental or consequential damages, so the above exclusion or limitation may not apply to you.)

In no event shall recovery of any kind be greater than the amount of the purchase price of the product sold. Alteration of the safety features of the product shall void this Warranty. You assume the risk and liability for loss, damage, or injury to you and your property and/or to others and their property arising out of the use or misuse or inability to use the product.

This limited warranty shall not extend to anyone other than the original purchaser, original lessee or the person for whom it was purchased as a gift.

How State Law Relates to this Warranty: This limited warranty gives you specific legal rights, and you may also have other rights which vary from state to state.