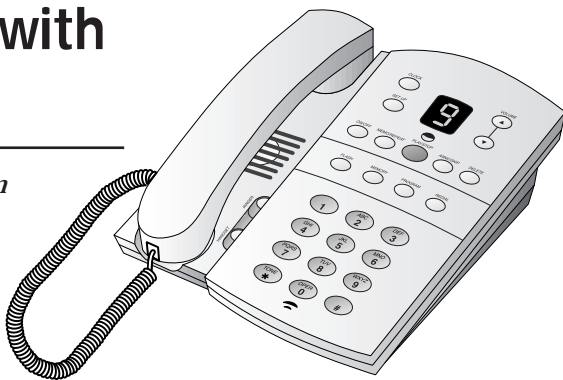




USER'S MANUAL Part 2

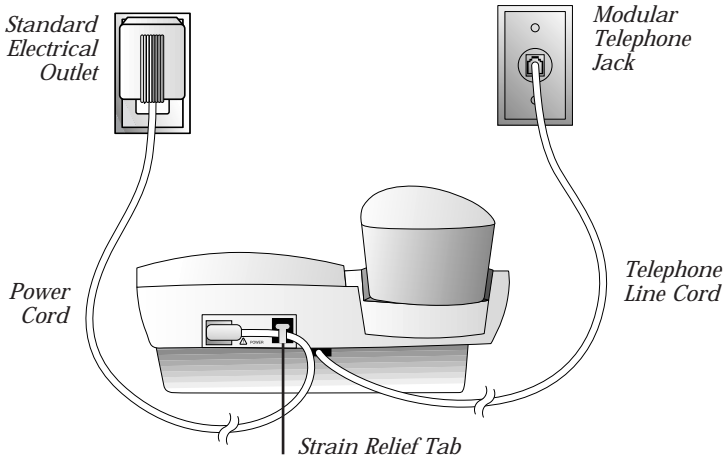
Tapeless Digital Answering System Telephone with Time/Day 1817

*Fold open this manual for information about this telephone's installation and operation. Please also read **Part 1 — Important Product Information.***



For Customer Service Or Product
Information, Visit Our Website At
www.telephones.att.com

INSTALLATION

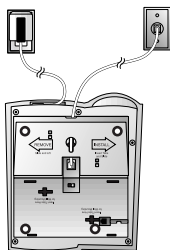


Set Dial Mode

This telephone comes set for touch tone dialing. Use the Dial Mode switch on the bottom of the phone to select **TT** (touch tone) or **DP** (dial pulse), depending on your service. When set to Dial Pulse mode, the phone can be switched temporarily to Touch Tone mode for access to services that require tone signaling, including some tone activated computer systems. To switch from pulse to tone dialing during a call, see "Temporary Tone" in the TELEPHONE OPERATION section of this manual.

Table/Desk Installation

- 1 Remove the base.**
Slide the base sideways as shown by the REMOVE arrow.
- 2 Connect the long line cord to telephone.**
Plug the long line cord into the **LINE** jack in the center of the bottom of the set.
- 3 Reinstall the base.**
Turn the base so the larger end is toward the top of the telephone. Feed the line cord through the hole in the larger end of the base and insert the base tabs into the slots. Then slide sideways in the direction of the INSTALL arrow to lock the base into the phone. Turn the telephone right side up; it should sit flat on your table during use.



- 4 Connect the line cord to a modular wall jack.**

Plug the free end of the line cord into a modular wall jack. Make sure it snaps firmly into place.

- 5 Connect the handset to the telephone.**

Plug one end of the coiled cord into the handset jack on the bottom of the set near the right side. Press the cord down and through the channel to the side. Plug the other end of the coiled cord into the handset, then hang up.

- 6 Connect the power cord.**

Plug the power cord into the jack labeled **POWER** on the back of the telephone and into an electrical outlet not controlled by a wall switch. Fit the power cord behind the strain relief tab. The Message Window flashes **C** to indicate that you need to set the clock (see "Setting the Clock" in the ANSWERING SYSTEM OPERATION section of this manual).



Use only the power cord supplied with this product. If you need a replacement, call 1 800 222-3111.
Input: 120V, 60Hz.
Output: 9V AC, 400 mA.

- 7 Check for dial tone.**

Lift the handset and listen for a dial tone. If you don't hear a dial tone, see IN CASE OF DIFFICULTY.

INSTALLATION

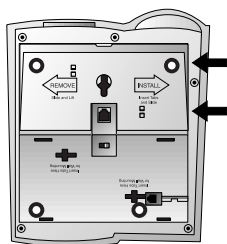


Figure 1

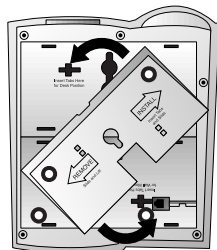


Figure 2

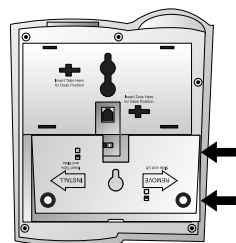


Figure 3

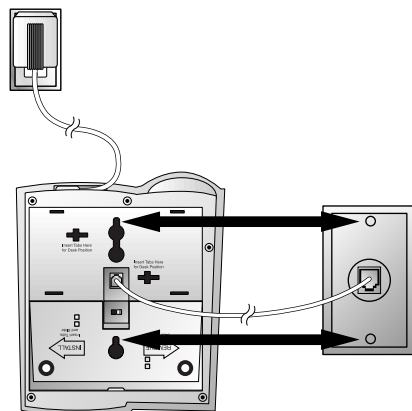


Figure 4

Wall Installation

1 Remove the base.

Slide the base sideways as shown by the REMOVE arrow (Figure 1).

2 Connect the short line cord to the telephone.

Plug the five inch line cord into the LINE jack in the center of the bottom of the set.

3 Reinstall the base.

Turn the base so that the larger end is toward the bottom of the telephone (Figure 2). Insert the base tabs into the slots. Then slide sideways in the direction of the INSTALL arrow to lock the base into the phone (Figure 3).

4 Reverse the handset tab.

To mount the telephone on a wall, you must reverse the handset tab. This tab holds the handset when you hang up. Hold down the switchhook, and slide the tab up and out of its slot (Figure 5). Turn the tab so that the end with the "hook" is up (Figure 6). Then insert the tab back into its slot (Figure 7).

5 Connect the line cord to the modular jack and mount the phone onto the wall jack.

Plug the free end of the line cord into a modular wall jack. Make sure the cord snaps firmly into place. Place the phone on the wall jack mounting studs and pull down until it is held securely (Figure 4).

6 Follow Steps 5-7 under Table/Desk Installation.

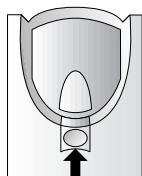


Figure 5

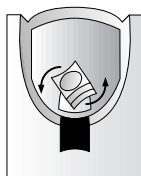


Figure 6

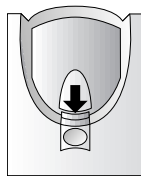


Figure 7

TELEPHONE OPERATION

Redial

This telephone always stores in memory the last number manually dialed (up to 24 digits). The number remains in memory until you dial another number.

To dial the last number called from this phone, lift the handset and press **[REDIAL]**.

Flash

The **[FLASH]** button is useful if you subscribe to custom-calling services from your local telephone company. Press **[FLASH]** instead of pressing the switchhook to activate services such as Call Waiting or Three-Way Calling.

You may have to press other buttons before or after **[FLASH]** as explained in the custom-calling instructions provided by your local telephone company. The **[FLASH]** button is used only as a substitute for pressing the switchhook.

Ringer Volume

Slide the **RINGER** switch on the front of the telephone (near the dial pad) up to increase volume, or down to decrease volume. The lowest setting turns the ringer off.

Receiver (Handset) Volume

Use the handset **VOLUME** switch on the front of the telephone (near the dial pad) to adjust the handset volume to a comfortable listening level.

Temporary Tone

If you have dial pulse (rotary) service, you can change from pulse to tone dialing during a call by pressing **[XTONE]**. This is useful if you need to send tone signals to access telephone banking or long-distance services.

- 1 Dial the telephone number.
- 2 Press **[XTONE]**. All buttons pressed after this send tone signals.
- 3 After you hang up, the phone returns to pulse dialing.

TELEPHONE MEMORY

This telephone can store up to nine numbers (up to 18 digits each). You can keep a record of stored numbers on the directory card.

Storing Memory Numbers

- 1 Lift the handset.
- 2 Press **[PROGRAM]**.
- 3 Enter the telephone number you want to store. You will hear a beep each time you press a button.
- 4 Press **[MEMORY]**.
- 5 Enter a digit (1–9) where you want to store the number.
- 6 Hang up. Repeat **Steps 1–5** to store another number.

Dialing Memory Numbers

- 1 Lift the handset and listen for a dial tone.
- 2 Press **[MEMORY]**.
- 3 Press the memory location you want to dial (1–9).

Erasing Memory Numbers

Follow the directions under “Storing Memory Numbers” to enter another number in the location you want to erase.

***NOTE:** Numbers programmed into memory locations may not be retained if the telephone has been unplugged from the line jack for a half hour or more.*

IN CASE OF DIFFICULTY

If you have difficulty operating this telephone answering system, try the suggestions below. For Customer Service, visit our website at www.telephones.att.com or call 1 800 222-3111. **Please retain your receipt as your proof of purchase.**

No Dial Tone

Make sure all plugs are connected properly. Check the line cord connections at the modular jack and at the telephone. Also check the coiled handset cord connection at both ends.

Call Cannot Be Dialed or Is Dialed Slowly

- This product comes set for touch tone (TT) dialing. Make sure you choose the correct dialing mode (TT/DP); touch tone dialing will not work if you have dial pulse (DP) service.
- If you just used Temporary Tone, leave the handset on the base for a few seconds before making another call.

Telephone Does Not Ring

- Make sure the **RINGER** switch is set to the middle or top setting (the lowest setting turns it off).
- If there are several other telephones on the same line, try disconnecting some of the other telephones. Having too many telephones connected can also create problems such as low ringer volume, or impaired sound quality during calls.

Message Window Is Blank

- Make sure the power cord is securely connected to both the answering system (and threaded through the strain relief tab) and an electrical outlet not controlled by a wall switch.
- Press **ON/OFF** to make sure the system is on.

Messages Are Incomplete

- The system can accept messages up to three minutes long. If a caller leaves a very long message, part of it might be lost when the system disconnects the call after three minutes.
- If the caller pauses for more than seven seconds, the system stops recording and disconnects the call.
- If the system's memory fills up during a message, the system stops recording and disconnects the call.

System Does Not Answer After Correct Number of Rings

- If the Toll Saver feature is on, the number of rings changes from four to two when you have new messages waiting.
- In some cases, the system might be affected by the ringing system used by the local telephone company.
- If the system's memory is full or the system is off, the system answers after 10 rings.

System Will Not Record Messages

When memory is full and the Message Window displays **F**, saved messages must be deleted before new messages can be recorded.

System Does Not Respond To Remote Commands

- Make sure you are calling from a touch tone phone. When you dial a number, you should hear tones. If you hear clicks instead, the phone is not a touch tone telephone.
- The answering system may not detect the Remote Access Code while your announcement is playing. Try waiting until the announcement is over before entering the code.
- There may be noise or interference on the phone line you are using. Press dial buttons firmly.
- Make sure you are entering your Remote Access Code correctly.
- You might be calling from a phone that sends tones too short for your answering system to detect.

IN CASE OF DIFFICULTY

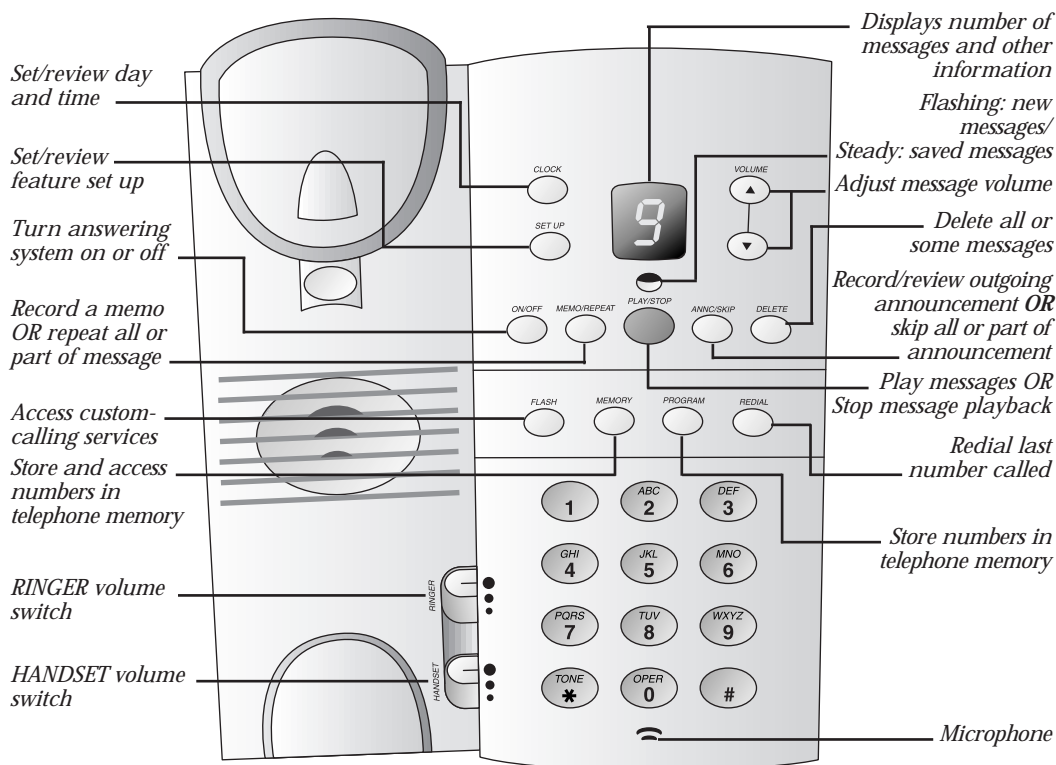
Power Failure Recovery

If the system is disconnected from AC power, the answering system will not operate, but you will still be able to make and receive calls. Your announcement and messages are retained in memory during a power failure, but you will need to reset the clock when power is restored. See the instructions on the bottom of the unit.

Message Window Displays

- ⌈ Clock needs to be reset.
 - *Flashing* – System is busy or in use
— **OR** —
Steady – System in Remote Access mode.
- ⌋ Remote listening mode.
- ' | Deleting (rotating).
- F Memory is full
 - **OR** —
Announcement monitor is off
(shown during Setup).
- E Call 1 800 222-3111.

ANSWERING SYSTEM OPERATION



Setting the Clock

You'll need to set the clock so that it can announce the day and time that each message is received. Press **PLAY/STOP** to exit Setting the Clock at any time.

- 1 Press and hold **CLOCK** until the Message Window displays **C**, and the default day is announced.
- 2 To change the day setting, hold down **MEMO/REPEAT** or **ANNC/SKIP** until the correct day is announced. Release the button.
- 3 Press and release **CLOCK**. The current hour setting is announced.
- 4 To change the hour setting, hold down **MEMO/REPEAT** or **ANNC/SKIP** until the correct hour is announced. Release the button.
- 5 Press and release **CLOCK**. The current minutes setting is announced.
- 6 To change the minutes setting, hold down **MEMO/REPEAT** or **ANNC/SKIP** until the correct minutes setting is announced. Release the button.
- 7 Press and release **CLOCK**. The new day and time are announced.

To check the clock, press and release **CLOCK**.

NOTE: In the event of a power failure, see the instructions on the bottom of the unit to reset the clock.

Recording Your Announcement

Before using this answering system, you should record the announcement (up to one minute long) that callers will hear when the system answers a call. If you choose not to record an announcement, the system answers with a prerecorded announcement: "Hello. Please leave a message after the tone."

- 1 Press and hold **ANNC/SKIP**. The system beeps. Speak toward the microphone normally, from about nine inches away. While you are recording, the Message Window displays a flashing —.
- 2 To stop recording, release **ANNC/SKIP**. The system automatically plays back your announcement.

To review your announcement, press and release **ANNC/SKIP**.

ANSWERING SYSTEM OPERATION

Turning the System On/Off

Use **ON/OFF** to turn the system on or off. When the system is off, the Message Window is blank.

Volume Control

Use **VOLUME** buttons (**▲** and **▼**) to adjust the volume of the system's speaker. Press the top button (**▲**) to increase volume. Press the bottom button (**▼**) to decrease volume. The system beeps three times when you reach the maximum or minimum volume setting.

Answering Calls

When the system answers a call, the caller hears the announcement you recorded, followed by a beep. After the beep, the system begins recording your caller's message. A caller can leave a message up to three minutes long. If the message is longer than three minutes, or if the caller is silent for more than seven seconds, or if the system runs out of memory, the system beeps once and hangs up.

Callers can skip over your announcement by pressing **#**.

Message Window

The Message Window displays the number of messages that have been recorded. If there are more than nine messages recorded, the Message Window alternately displays the two digits of the total number of messages recorded. If the Message Window displays **F**, then the memory is full and you'll need to delete messages before new ones can be recorded.

PLAY Light

The **PLAY** light blinks when you have new messages, and remains steady when you have messages in memory that you've already played. The **PLAY** light is off when there are no messages in memory.

Call Screening/Intercept

Set the system to answer calls, and set the volume control so you can hear the caller's message. If you choose not to hear the caller's message, adjust the volume to the lowest setting. The Message Window displays **0**.

If you decide to take the call, lift the handset of any telephone on the same line. The system stops recording and resets to answer calls.

Feature Set Up

You can set up one feature at a time as described below, or you can set up a feature, and then move on to set up another feature. After you change one feature, press and release **SET UP** until you hear the voice prompt for the next feature you want to change

— **OR** —

Press **PLAY/STOP** to exit

— **OR** —

The system will time out after 30 seconds and save any changes already made.

Ring Select and Toll Saver

Use **Ring Select** to choose how many times the line will ring before the system answers a call. Set for **2**, **4** or **Toll Saver**. When you set the system to **Toll Saver**, it answers after four rings when you have no new messages, and after two rings when you have new messages.

- 1 Press and hold **SET UP** for about two seconds. The system announces the current ring selection.
- 2 Press and release **ANNC/SKIP** or **MEMO/REPEAT** until the system announces your ring selection.
- 3 Press and release **PLAY/STOP** to exit
— **OR** —
Press and release **SET UP** to change the Remote Access Code (follow **Steps 2-5** under "Remote Access Code").

ANSWERING SYSTEM OPERATION

Remote Access Code

You can use many features of this answering system remotely from a touch tone phone. Most features can be accessed only after you enter a Remote Access Code, which is preset to 123. You can review the Remote Access Code by pressing and releasing **SET UP**.

You can change the Remote Access Code to any three digit number from 100 to 999.

- 1 Press and hold **SET UP**. After the Ring Select setting is announced, continue to press and release **SET UP** until the system announces the current Remote Access Code.
 - 2 Press and release **MEMO/REPEAT** or **ANNC/SKIP** until the system announces the first digit you want.
 - 3 Press and release **SET UP** to select the announced digit.
 - 4 Repeat **Steps 2 and 3** for the second and third digits of the code.
 - 5 Press **PLAY/STOP** to exit
- **OR** —
- Press **SET UP** to turn the Announcement Monitor on or off (follow **Steps 2 and 3** under “Announcement Monitor”).

Announcement Monitor

You can choose whether to hear the announcement when your system answers a call, or have it silent (off) on your end (your caller will still hear an announcement).

- 1 Press and hold **SET UP**. After the Ring Select setting is announced, continue to press and release **SET UP** until the system announces “*Monitor is on (or off)*”.
- 2 Press and release **MEMO/REPEAT** or **ANNC/SKIP** until the system announces your selection.
- 3 Press and release **PLAY/STOP** or **SET UP** to exit.

Listening to Your Messages

As the system plays back messages, the Message Window displays the number of the message playing. Before playing each message, the system announces the day and time the message was received. After playing the last message, the system announces “*End of messages*.”

Play all messages — Press and release **PLAY/STOP**. If you have no messages, the system announces “*No messages*.”

Play new messages only — Hold down **PLAY/STOP** for about two seconds, until the system begins playing. If you have no new messages, the system announces “*No new messages*.”

Repeat entire message — Press and release **MEMO/REPEAT**.

Repeat part of message — Hold down **MEMO/REPEAT** until you hear a beep, then release to resume playing. The more beeps you hear, the farther back in the message you will be when you release the button.

Repeat previous message — Press **MEMO/REPEAT** twice, continue this process to hear other previous messages.

Skip to next message — Press and release **ANNC/SKIP**.

Skip part of a message — Hold down **ANNC/SKIP** until you hear a beep, then release to resume playing. The more beeps you hear, the farther into the message you will be when you release the button.

Stop message playback — Press and release **PLAY/STOP**.

Saving Messages

The system automatically saves your messages if you do not delete them. The system can save about 12 minutes of messages, including your announcement, for a total of up to 59 messages. When memory is full, you must delete some or all messages before new messages can be recorded.

ANSWERING SYSTEM OPERATION

Deleting Messages

Delete All messages

Hold down **DELETE**. The system announces “*Messages deleted*” and permanently deletes messages. The Message Window displays **0**. If you haven’t listened to all of the messages, the system beeps five times, and does not delete messages.

Delete selected messages

Press and release **DELETE** while the message you want to delete is being played. The system beeps once, and continues with the next message. If you want to check a message before you delete it, you can press **MEMO/REPEAT** to replay the message before deleting it.

When the system reaches the end of the last message, the messages not deleted are renumbered, and the Message Window displays the total number of messages remaining in memory.

Recording a Memo

You can record a memo to be stored as an incoming message. The memo can be up to three minutes long, and will be played back with other messages.

- 1 Press and hold **MEMO/REPEAT**. After the beep, speak toward the microphone.
- 2 To stop recording, release **MEMO/REPEAT**.
- 3 To play the memo, press **PLAY/STOP**.

When Memory is Full

The system can record approximately 12 minutes of messages, including your announcement, for a total of up to 59 messages. When memory is full, the Message Window flashes **F**. Delete messages to make room for new ones.

When memory is full, the system answers calls after 10 rings, and sounds two beeps instead of your announcement.

ANSWERING SYSTEM OPERATION

FROM A REMOTE TOUCH TONE PHONE

Connect with the Answering System

- 1 Dial your telephone number from a touch tone phone with a different telephone number.
- 2 When the system answers, enter your three-digit Access Code during or after the announcement. The system announces the number of messages, then beeps twice. If the announcement continues to play after entering your code, wait for the announcement to end or press **#** to stop the announcement, then re-enter the code.
- 3 The two-beep signal lets you know the system is ready to accept a remote command.

Playing Messages

- 1 After the two beeps, wait four seconds, and the system plays back messages
— **OR** —
Press and release **1** to play all messages
— **OR** —
Press and release **2** to play only new messages. (If there are no new messages, the system announces “*No new messages.*”)
- 2 **To repeat a message** — Press and release **4** while the message is playing.
To repeat part of a message — Hold down **4**. To resume playing, release **4**.
To skip a message — Press and release **6** while the message is playing.
To skip part of a message — Hold down **6**. To resume playing, release **6**.
To stop message playback — Press and release **5**.
To save messages, hang up.

Deleting Messages

Delete All Messages

After you have listened to all messages and heard the two beeps, press **3 3**.

Delete Selected Messages

Press and release **3** while the message you want to delete is playing.

Record Announcement

- 1 Press **7 ***, and begin speaking after the beep.
- 2 Press **5** when you are finished. The system replays your new announcement.

To review your announcement — Press **7 1**.

Record a Memo

- 1 Press **#** and begin speaking after the beep.
- 2 Press **5** when you are finished.

Room Monitor with Intercom

You can call the answering system and listen to any activity in the room.

- 1 Press **9 8** to listen for 30 seconds.
- 2 If you wish, you can press **8** while the monitor is active to speak to someone in the room (for up to 30 seconds).
- 3 Press **8** again during intercom operation to return to listening only.
- 4 Press **5** at any time to exit Room Monitor with Intercom.

Ending the Remote Access Call

Press *** 9**. The system announces “*The machine will now hang up,*” and disconnects the call.

ANSWERING SYSTEM OPERATION FROM A REMOTE TOUCH TONE PHONE

Changing Remote Access Code

- 1 Press **[9] [9]**. The system announces “*Enter new code.*”
- 2 Enter your new Remote Access Code (any number between 100 and 999).
- 3 If a valid code is entered, the system announces the new Remote Access Code. If an invalid code is entered, the system beeps five times rapidly, then beeps twice. Repeat **Steps 1** and **2**.

Turn System Off

Press **[0] [0]**.

Turn System On

When the system is off, it answers after 10 rings, announces “*The machine is off,*” and beeps twice.

- 1 Press **[0]** to turn the system on.
- 2 The system beeps twice and is ready to answer calls and record messages. If the system beeps five times, the memory is full.

Memory Full

The system answers after 10 rings, then announces “*Memory is full,*” and beeps twice, you must delete messages to make room for new ones.

- 1 After two-beep signal, enter the Remote Access Code.
- 2 Listen to messages, and delete some or all of them.
- 3 Press **[0]** to make sure your system is on before you hang up.

PERF.

© 2000 Advanced American Telephones. All rights reserved.
Printed in Mexico. 850002692 6/00

fold



Tapeless Digital Answering System 1817

Remote Commands

To connect with your answering system:

- 1 Dial your telephone number from a touch tone phone.
 - 2 When the system answers, enter your Remote Access Code. The system announces the number of messages and beeps twice.
 - 3 Wait four seconds for the system to play back all messages
- **OR** —
Enter a remote command from inside this card.

PERF.

© 2000 Advanced American Telephones. All rights reserved.
Printed in Mexico. 850002692 6/00

fold



Tapeless Digital Answering System 1817

Remote Commands

To connect with your answering system:

- 1 Dial your telephone number from a touch tone phone.
 - 2 When the system answers, enter your Remote Access Code. The system announces the number of messages and beeps twice.
 - 3 Wait four seconds for the system to play back all messages
- **OR** —
Enter a remote command from inside this card.

ONE KEY REMOTE COMMANDS

Play All	Play New	Delete
1	2	3
Repeat	Stop/Exit	Skip
4	5	6
7	8	9
PORS	TUV	WXYZ
	System On	Record Memo
*	0	#
TO NE	OPER	

TWO KEY REMOTE COMMANDS

Turn system off	0 0
Delete all messages	3 3
Review announcements	7 7
Record announcement	7 * , speak after beep, press 5 to stop
Room monitor	9 8 , press 8 to speak with someone in the room; press 5 to exit
End remote access call	* 9

ONE KEY REMOTE COMMANDS

Play All	Play New	Delete
1	2	3
Repeat	Stop/Exit	Skip
4	5	6
7	8	9
PORS	TUV	WXYZ
	System On	Record Memo
*	0	#
TO NE	OPER	

TWO KEY REMOTE COMMANDS

Turn system off	0 0
Delete all messages	3 3
Review announcements	7 7
Record announcement	7 * , speak after beep, press 5 to stop
Room monitor	9 8 , press 8 to speak with someone in the room; press 5 to exit
End remote access call	* 9

PERF.