

**Projector Management Application
Version 7.20
Instruction Guide**

Hitachi Maxell, Ltd.

Contents

1	INTRODUCTION.....	4
1.1	OUTLINE.....	4
1.2	SYSTEM.....	4
2	INSTALLATION.....	5
2.1	SYSTEM REQUIREMENTS	5
2.2	PROJECTOR MANAGEMENT APPLICATION INSTALLATION	6
3	OPERATING INSTRUCTIONS	8
3.1	CREATE LOGIN ACCOUNTS	8
3.2	START APPLICATION	10
3.3	QUIT APPLICATION	10
3.4	MAIN SCREEN.....	11
3.5	ADD A GROUP OF PROJECTORS	18
3.6	ADD AN INDIVIDUAL PROJECTOR	18
3.7	DELETE A GROUP OR INDIVIDUAL PROJECTOR	21
3.8	CHANGE A GROUP OR INDIVIDUAL PROJECTOR SETTINGS	21
3.9	COPY.....	21
3.10	MOVE	21
3.11	APPLYING ALARM / REMINDER SETTINGS TO PROJECTORS IN A GROUP	22
3.12	UPDATE STATUS.....	22
3.13	SEARCH QUERIES (IN STATUS VIEW)	22
3.14	CONTROL THE PROJECTOR	23
3.15	TURN ON THE POWER	26
3.16	TURN OFF THE POWER.....	26
3.17	DISPLAY MY IMAGE (E-SHOT).....	26
3.18	CHANGE FILTER MESSAGE	26
3.19	SCHEDULE EVENTS	27
3.20	ACTIVATE MONITORING SCHEDULED EVENTS	28
3.21	STOP MONITORING SCHEDULED EVENTS	28
3.22	POLLING INTERVAL PERIOD	28
3.23	MAIL SETTING.....	29
3.24	MY IMAGE (E-SHOT) TRANSFER	31
3.25	USER-DEFINED MODEL	33
3.26	OPEN THE BUILT-IN HTML PAGE OF THE PROJECTOR	36
3.27	SETUP PJMESSAGE TO PROJECTOR	37
3.28	ABOUT DIALOGUE	37
4	MAIL FEATURE.....	38
4.1	MAIL FORMAT.....	38

4.2	OTHERS	38
5	STATUS.....	39
6	OUTPUT LOG.....	40
7	CREATE LOG REPORT	41
8	CREATE STATUS REPORT	42

- Microsoft and Windows is the registered trademark of Microsoft Corporation in the US and other countries.
- Pentium is the registered trademark of Intel Corporation in the US and other countries.
- All other trademarks are the property of their respected owners.

Warning

- **This software is free via download. The manufacturer has no responsibility for any errors that may occur while using this software.**
- **This software, or any product used with this software may not be used for any act which obstructs the Maintenance of the International Peace and Safety.**

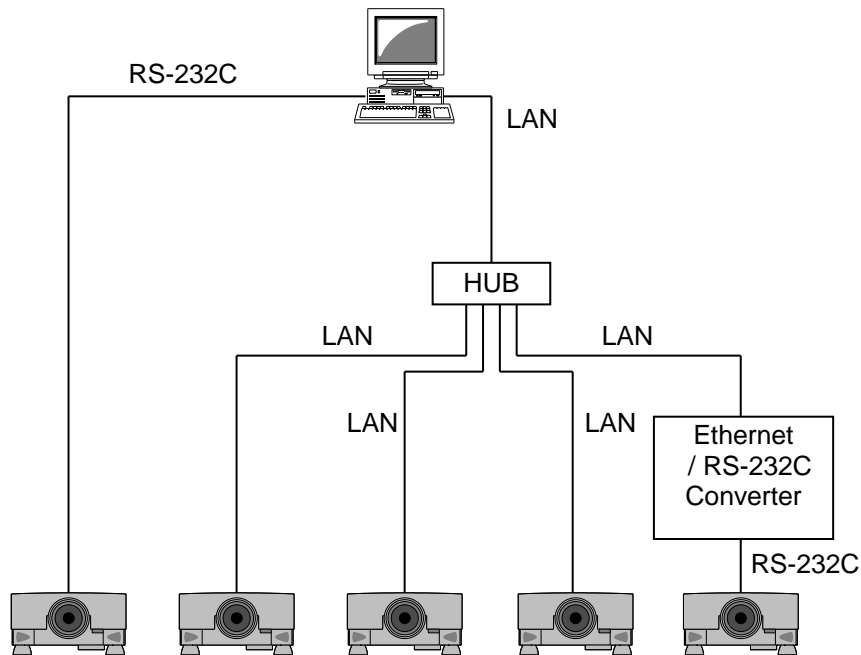
1 Introduction

1.1 Outline

Using the Projector Management Application allows you to use a single computer to control diagnose and monitor multiple projectors that are connected to the network or via an RS-232C cable.

1.2 System

The following diagram shows a typical network diagram for the Projector Management Application.



- Use a UTP cable category 5 or higher for a Local Area Network cable.
- Use a cross type cable when using a RS-232C serial cable.

2 Installation

2.1 System Requirements

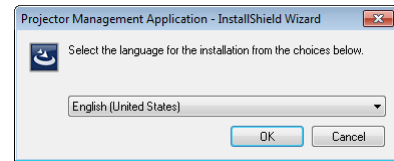
The following are the minimum system requirements of hardware and software to use the Projector Management Application.

- (1) Operating System
 - Windows 2000 Professional
 - Windows XP Home Edition / Professional
 - Windows Vista Home Basic / Home Premium / Business / Ultimate / Enterprise
 - Windows 7 Starter / Home Basic / Home Premium / Professional / Ultimate / Enterprise
 - Windows 8 / Windows 8 Pro / Windows 8 Enterprise
 - Windows 8.1 / Windows 8.1 Pro / Windows 8.1 Enterprise
- (2) CPU
 - Pentium3 500MHz or higher
- (3) Memory
 - 256MB or higher
- (4) Hard disc
 - Minimum 20MB free space for installation
- (5) Local Area Network port (RJ-45) or Serial port (RS-232C)

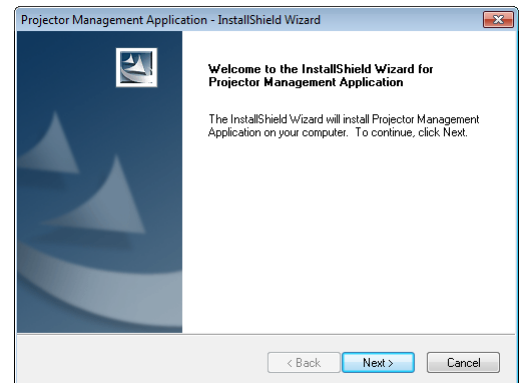
2.2 Projector Management Application Installation

The following describes the installation process for the Projector Management Application:

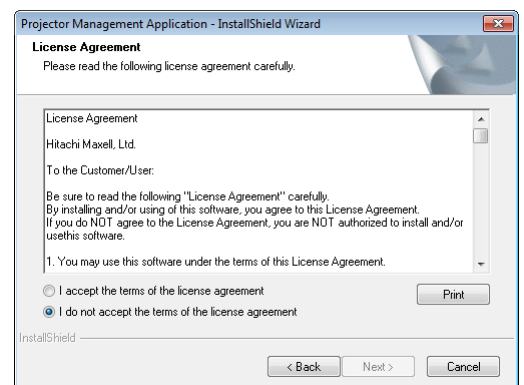
- (1) Double click the file “InstForPJMan_v7.20.exe”.
- (2) Select the language (English, Japanese or Chinese [Simplified]) during the installation process. And then click [OK].



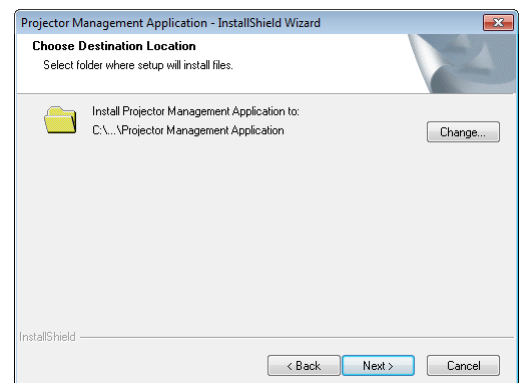
- (3) Click [Next]



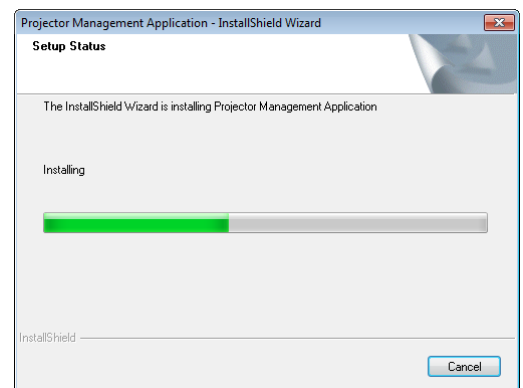
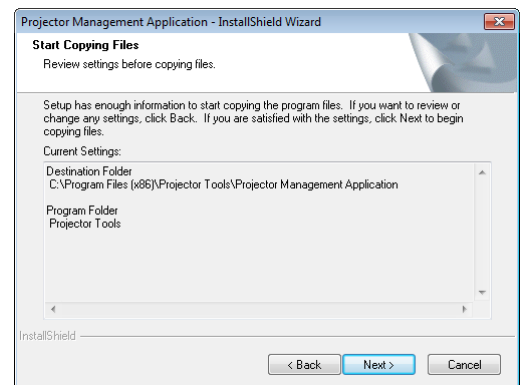
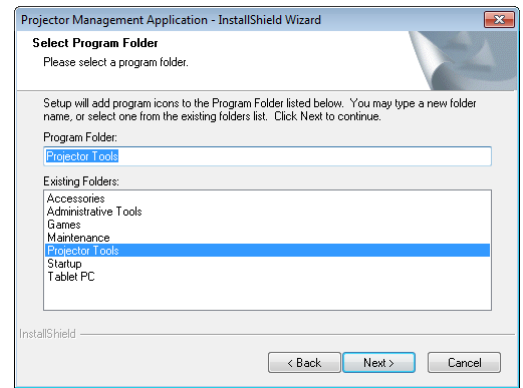
- (4) Read “License Agreement” and select “I accept the term of the license agreement” and click [Next] if you agree the license agreement. Otherwise, click [Cancel] and stop the installation.



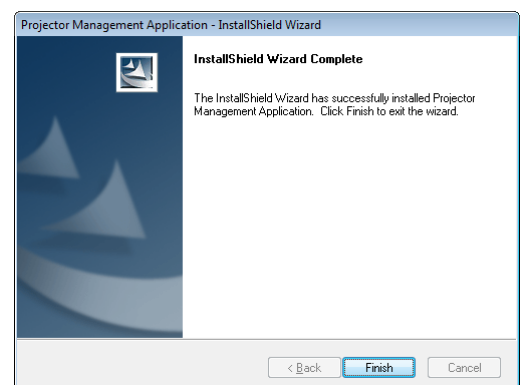
- (5) Confirm the program folder, and then click [Next].



- (6) Confirm the install folder and program folder again, and then click [Next].



- (7) Click [Finish] to complete the Projector Management Application setup wizard.



3 Operating Instructions

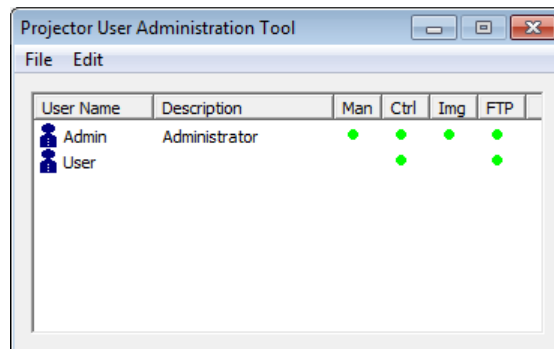
3.1 Create login accounts

The Projector Management Application requires a login name and password to launch the software. The Projector User Administration Tool helps you to create new user accounts.

3.1.1 How to launch

Double Click “PJUsrEdit.exe” that is located on same folder that you installed Projector Management Application.

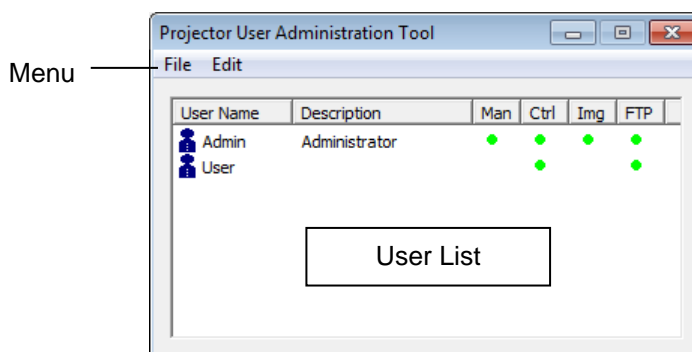
It automatically launches the Projector User Administration Tool, if no user accounts are created yet. Also Projector Management Application has a short cut [File] → [User Configuration] to launch Projector User Administration Tool.



3.1.2 How to exit

Select [File] → [Exit] from the menu or click [x] bottom of the top right corner. If the changes are made, you will be required to confirm the changes.

3.1.3 Main Window



(1) Menu

Menu	Sub Menu	Description
File	Save	Save user data
	Exit	Exit
Edit	Add New User	Create new user
	Change User	Edit user account
	Delete User	Delete user account

(2) User List

The status in the User List is described below.

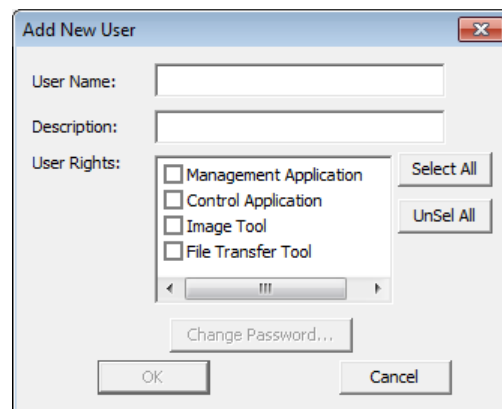
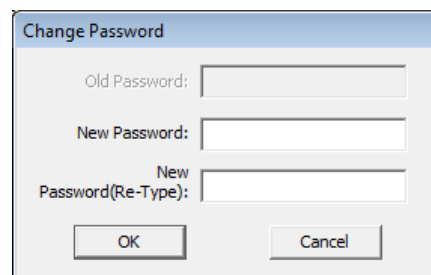
Row name	Description
User Name	Username (ID)
Description	Comment
Man	“●” shows that the user can access to the PJMan (Projector Management Application).
Ctrl	“●” shows that the user can access to the PJCtrl (Projector Control Tool).
Img	“●” shows that the user can access to the PJImg (Projector Image Tool).
FTP	“●” shows that the user can access to the PJTransfer (Projector File Transfer Tool).

3.1.4 Creating new user account

Select [Edit] → [Add New User] or rights click on the user list and select [Add New User]. The following dialog window appears.

User	---	Define user name, up to 20 characters
Description	---	Add comments, up to 50 characters
User Rights	---	Define accessibility. It defines the accessibility for the application software by each user account. The user can use allocation only marked application software.
Select All	---	Select all application software.
UnSel All	---	Unselect all application software.

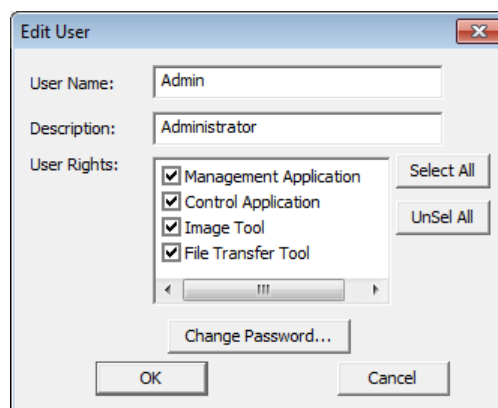
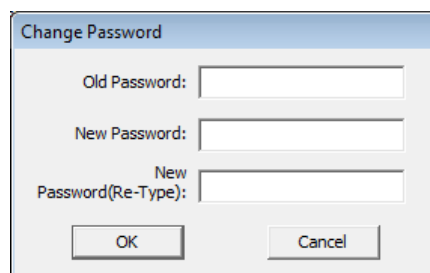
Press [OK] button after entering user name. The [Change Password] dialog appears. Enter new password and confirm entered password. The password is up to 20 characters and case sensitive.

The 'Add New User' dialog box has a title bar with a close button. It contains three text input fields: 'User Name:', 'Description:', and 'User Rights:'. Below the 'User Rights:' field is a list box with four items: 'Management Application', 'Control Application', 'Image Tool', and 'File Transfer Tool'. To the right of the list box are two buttons: 'Select All' and 'UnSel All'. Below the list box is a 'Change Password...' button. At the bottom are 'OK' and 'Cancel' buttons.The 'Change Password' dialog box has a title bar with a close button. It contains three text input fields: 'Old Password:', 'New Password:', and 'New Password (Re-Type):'. At the bottom are 'OK' and 'Cancel' buttons.

3.1.5 Edit user account

Double click a username on the user list or select [Edit] → [Change User] after choosing user to open edit dialog. You can edit username, description and accessibility (user rights).

Click the button to change password. Enter old and new password, and re-enter new password to confirm.

The 'Edit User' dialog box has a title bar with a close button. It contains three text input fields: 'User Name:' (with 'Admin' entered), 'Description:' (with 'Administrator' entered), and 'User Rights:'. Below the 'User Rights:' field is a list box with four items: 'Management Application', 'Control Application', 'Image Tool', and 'File Transfer Tool', all of which are checked. To the right of the list box are two buttons: 'Select All' and 'UnSel All'. Below the list box is a 'Change Password...' button. At the bottom are 'OK' and 'Cancel' buttons.The 'Change Password' dialog box has a title bar with a close button. It contains three text input fields: 'Old Password:', 'New Password:', and 'New Password (Re-Type):'. At the bottom are 'OK' and 'Cancel' buttons.

3.1.6 Delete user account

Select [Edit] → [Delete User] or rights click on the user list and select [Delete User]. The confirmation window will popup.

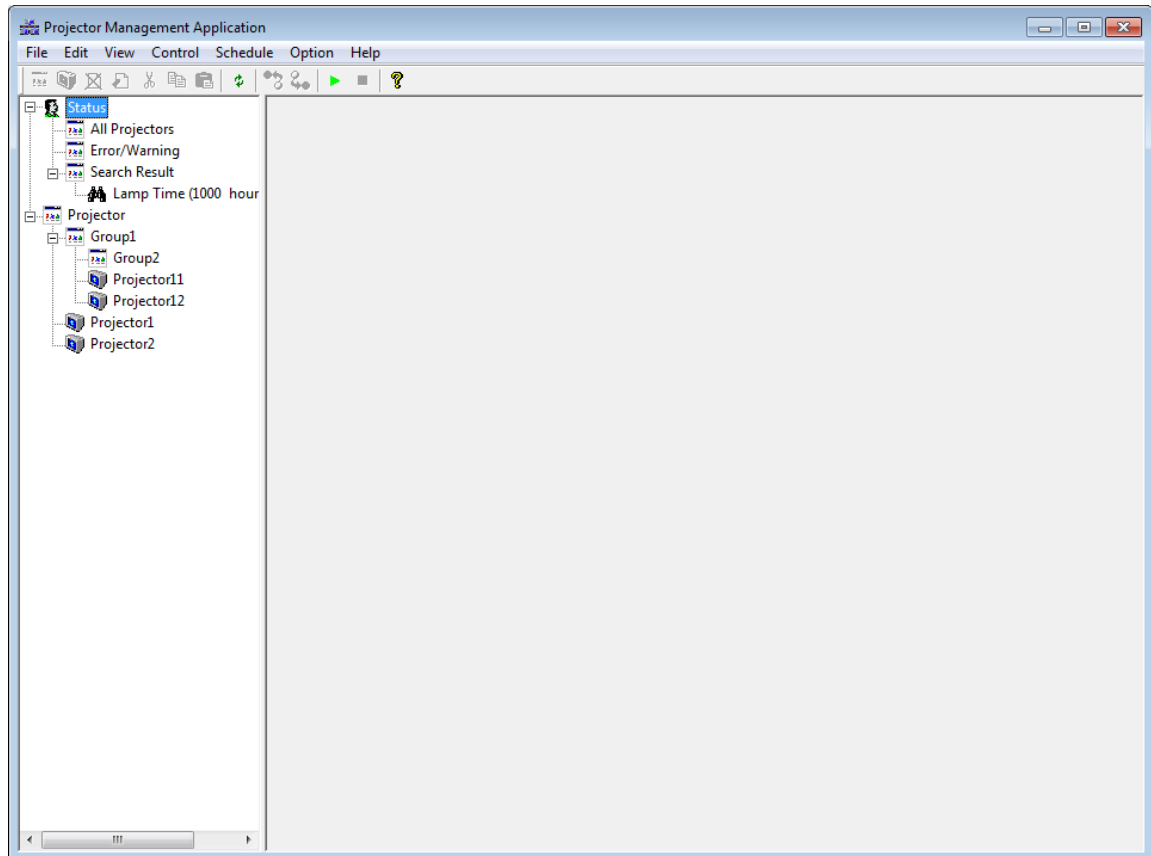
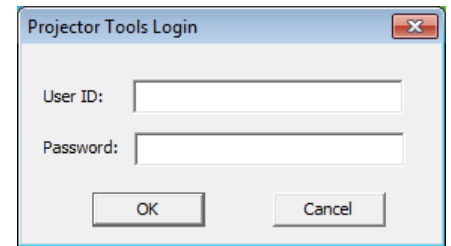
3.1.7 Save user account

Select [File] → [Save]. The data is stored in the file, "C:\Program Files\Common Files\Projector Tools\config\UserList".

3.2 Start Application

Select Windows [Start] → [Program] → [Projector Tools] → [Projector Management Application]. The login window will then appear.

Enter the username and password that was created by “Projector User Administration Tool”. After logged in, the following window will appear.



3.3 Quit Application

Select [File] - [Exit] to quit

It is also possible to quit this software by clicking [x] on the top right corner of the window.

When the confirmation dialogue appears, select [Yes] to finish.

3.4 Main Screen





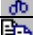








(1) Menu

Menus and Functions in the Main Screen are shown below.

Menu	Sub Menu	Function
File	Import	Load the projector configuration file.
	Export	Save the projector configuration file.
	User Configuration	Launch Projector User Administration Tool.
	Output Report	Create the report.
	Log	Log on / off.
	Log Report	Create the log data report.
	Exit	Quit this application
Edit	Add Group	Add Group.
	Add Projector	Add projectors which user is going to manage.
	Discovery	Discover projectors.
	Delete	Delete the projectors or groups that are selected from tree.
	Edit	Edit the registered information of the projectors or groups that are chosen from tree.
	Cut	Cut the selected projector on the tree view.
	Copy	Copy the selected projector on the tree view.
	Paste	Paste projectors.
	Alarm Time Settings	Set / Edit the period of the lamp and filter hours reminder.
View	Refresh	Refresh the status of the projectors or groups that are chosen from the tree
	Search	Edit the search query.
	Schedule	Select on / off for the Schedule view
Control	Projector Control	Control the selected group of projector, or the selected projector.
	Power ON	Power ON the projectors which are selected from the tree, or the projectors which belong to a group which is chosen from the tree.
	Power OFF	Power OFF the projectors which are selected from the tree, or the projectors which belong to a group which is chosen from the tree.
	Display Image	Select My Image (e-SHOT) image to display.
	Execute Command	Control User-defined model.
	Filter Message	Change filter message setting.
Schedule	Edit	Edit the Schedule settings.
	Start	Start Schedule execution.
	Stop	Stop Schedule execution.
Option	Status Check Interval	Set the Status Check Interval.
	Mail Settings	Configure the Mail Settings.
	Send Image	Transfer My Image (e-SHOT) image to projectors.
	Edit User-defined Model	Edit User-defined model information.
	Access Projector via HTML	Open the internal HTML page with default Internet browser.
	Send Messenger data	Transfer Messenger data to projectors.
Help	About Projector Management Application	Displays the version of this application.

(2) Toolbar

The functions of these icons correspond with the menus as follows:

Icon	Menu
	[Edit]-[Add Group]
	[Edit]-[Add Projector]
	[Edit]-[Delete]
	[Edit]-[Edit]
	[Edit]-[Cut]
	[Edit]-[Copy]
	[Edit]-[Paste]
	[View]-[Refresh]
	[Control]-[Power ON]
	[Control]-[Power OFF]
	[Schedule]-[Start]
	[Schedule]-[Stop]
	[Help]-[About Projector Management Application]

(3) Status Group

PJMan provides two pre-defined projector views, and the flexible views that are based on the search queries.

(a) All Projectors View

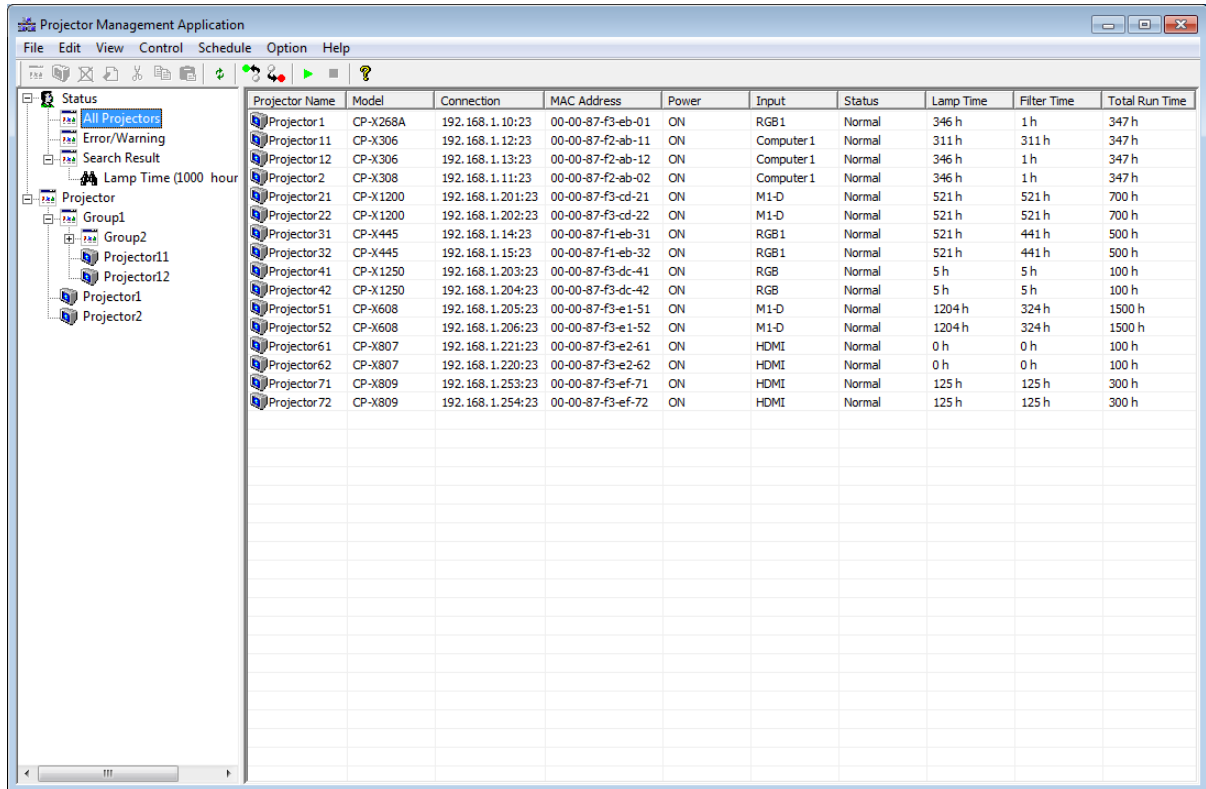
Shows the list of all projectors that are defined in the PJMan software.

(b) Error / Warning View

Shows the list of projectors that are ONLY in Error or Warning state.

(c) Find Result View

Shows the multiple lists of projectors based on the given search queries (described in a later section).



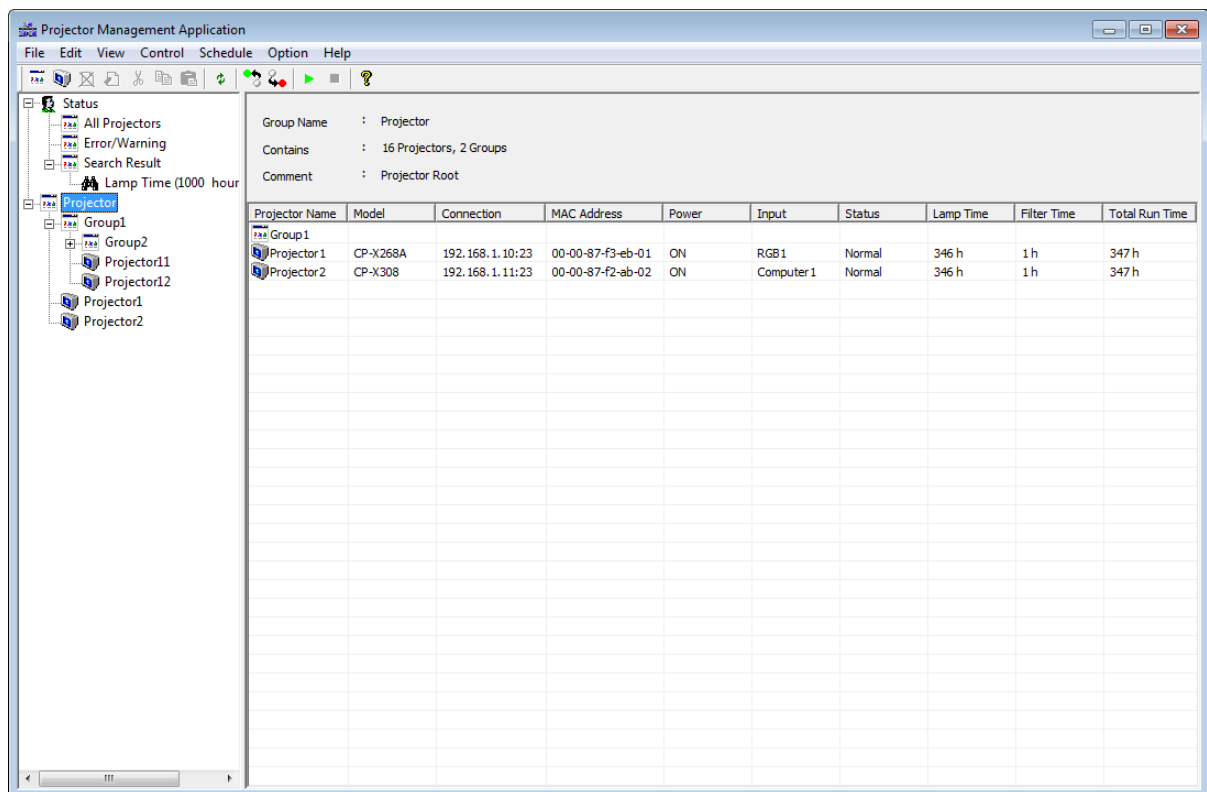
The screenshot shows the 'Projector Management Application' window. On the left is a tree view with 'Status' expanded, showing 'All Projectors', 'Error/Warning', and 'Search Result'. Below 'Status' is a 'Projector' group containing 'Group1', 'Group2', 'Projector11', 'Projector12', 'Projector1', and 'Projector2'. The main area displays a table of projectors with the following data:

Projector Name	Model	Connection	MAC Address	Power	Input	Status	Lamp Time	Filter Time	Total Run Time
Projector1	CP-X268A	192.168.1.10:23	00-00-87-f3-eb-01	ON	RGB1	Normal	346 h	1 h	347 h
Projector11	CP-X306	192.168.1.12:23	00-00-87-f2-ab-11	ON	Computer 1	Normal	311 h	311 h	347 h
Projector12	CP-X306	192.168.1.13:23	00-00-87-f2-ab-12	ON	Computer 1	Normal	346 h	1 h	347 h
Projector2	CP-X308	192.168.1.11:23	00-00-87-f2-ab-02	ON	Computer 1	Normal	346 h	1 h	347 h
Projector21	CP-X1200	192.168.1.201:23	00-00-87-f3-cd-21	ON	M1-D	Normal	521 h	521 h	700 h
Projector22	CP-X1200	192.168.1.202:23	00-00-87-f3-cd-22	ON	M1-D	Normal	521 h	521 h	700 h
Projector31	CP-X445	192.168.1.14:23	00-00-87-f1-eb-31	ON	RGB1	Normal	521 h	441 h	500 h
Projector32	CP-X445	192.168.1.15:23	00-00-87-f1-eb-32	ON	RGB1	Normal	521 h	441 h	500 h
Projector41	CP-X1250	192.168.1.203:23	00-00-87-f3-dc-41	ON	RGB	Normal	5 h	5 h	100 h
Projector42	CP-X1250	192.168.1.204:23	00-00-87-f3-dc-42	ON	RGB	Normal	5 h	5 h	100 h
Projector51	CP-X608	192.168.1.205:23	00-00-87-f3-e1-51	ON	M1-D	Normal	1204 h	324 h	1500 h
Projector52	CP-X608	192.168.1.206:23	00-00-87-f3-e1-52	ON	M1-D	Normal	1204 h	324 h	1500 h
Projector61	CP-X807	192.168.1.221:23	00-00-87-f3-e2-61	ON	HDMI	Normal	0 h	0 h	100 h
Projector62	CP-X807	192.168.1.220:23	00-00-87-f3-e2-62	ON	HDMI	Normal	0 h	0 h	100 h
Projector71	CP-X809	192.168.1.253:23	00-00-87-f3-ef-71	ON	HDMI	Normal	125 h	125 h	300 h
Projector72	CP-X809	192.168.1.254:23	00-00-87-f3-ef-72	ON	HDMI	Normal	125 h	125 h	300 h

Projector Name	---	Displays the projector name.
Model	---	Displays the model name.
Connection	---	Displays the connection information. (IP address and MAC address / COM port)
MAC Address	---	Displays the MAC address.
Power	---	Displays the power status (ON / STANDBY).
Input	---	Displays the input source.
Status	---	Displays the error status.
Lamp Time	---	Displays the current lamp time.
Filter Time	---	Displays the current filter time.
Total Run Time	---	Displays the total run time.

(d) Projectors Group View

Shows the list of groups and projectors in the selected group.

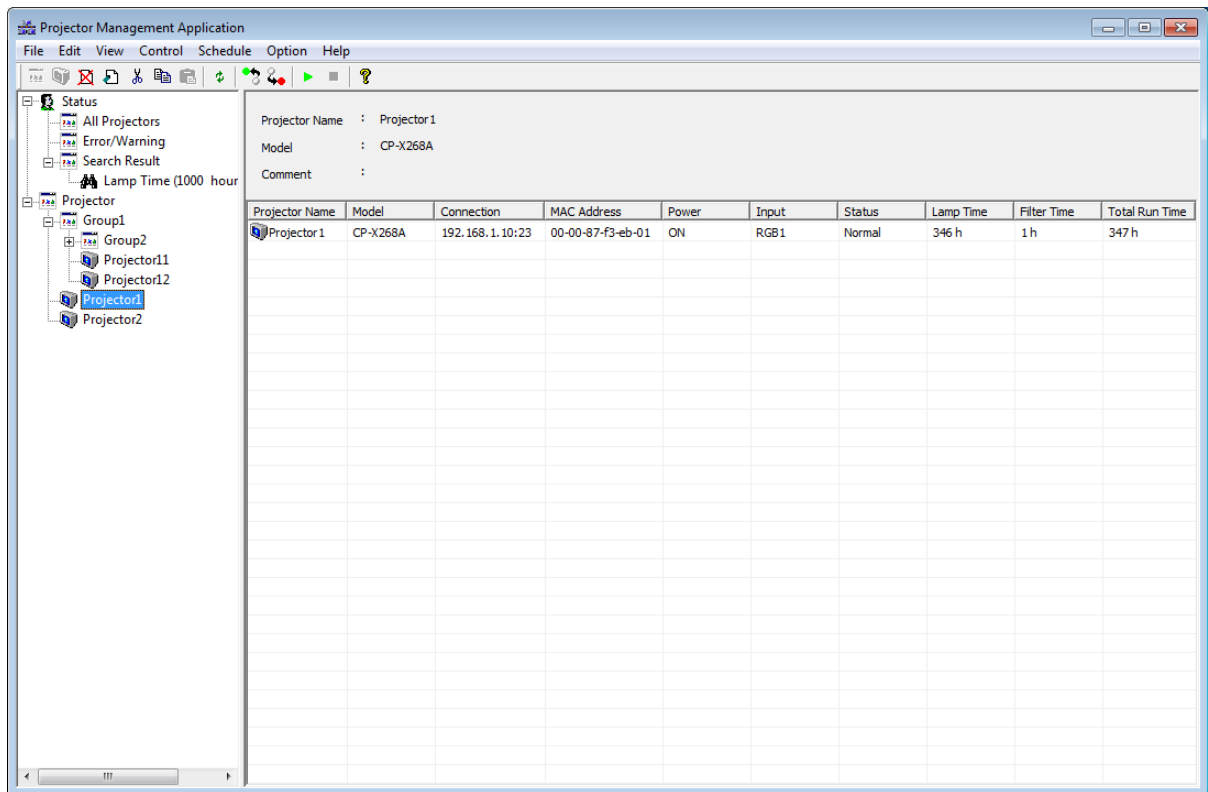


Group Name	---	Displays the group name.
Contains	---	Displays the number of projectors and groups in the group.
Comment	---	Displays the comment.

Projector Name	---	Displays the projector name.
Model	---	Displays the model name.
Connection	---	Displays the connection information. (IP address and MAC address / COM port)
MAC Address	---	Displays the MAC address.
Power	---	Displays the power status (ON / STANDBY).
Input	---	Displays the input source.
Status	---	Displays the error status.
Lamp Time	---	Displays the current lamp time.
Filter Time	---	Displays the current filter time.
Total Run Time	---	Displays the total run time.

(e) Individual Projector View

Shows the status of selected projector.



Projector Name	---	Displays the projector name.
Model	---	Displays the model name.
Comment	---	Displays the comment.

Projector Name	---	Displays the projector name.
Model	---	Displays the model name.
Connection	---	Displays the connection information. (IP address and MAC address / COM port)
MAC Address	---	Displays the MAC address.
Power	---	Displays the power status (ON / STANDBY).
Input	---	Displays the input source.
Status	---	Displays the error status.
Lamp Time	---	Displays the current lamp time.
Filter Time	---	Displays the current filter time.
Total Run Time	---	Displays the total run time.

(4) Schedule View

(a) For a group of projectors

The screenshot shows the 'Projector Management Application' window. The left sidebar contains a tree view with the following structure:

- Status
 - All Projectors
 - Error/Warning
 - Search Result
 - Lamp Time (1000 hour)
- Projector
 - Group1
 - Projector11
 - Projector12
 - Projector1
 - Projector2

The main area displays the 'Projector' group details:

- Group Name : Projector
- Contains : 16 Projectors, 2 Groups
- Comment : Projector Root

Projector Name	Model	Connection	MAC Address	Power	Input	Status	Lamp Time	Filter Time	Total Run Time
Group1									
Projector1	CP-X268A	192.168.1.10:23	00-00-87-f3-eb-01	ON	RGB1	Normal	346 h	1 h	347 h
Projector2	CP-X308	192.168.1.11:23	00-00-87-f2-ab-02	ON	Computer 1	Normal	346 h	1 h	347 h

At the bottom, the 'Schedule List' section shows:

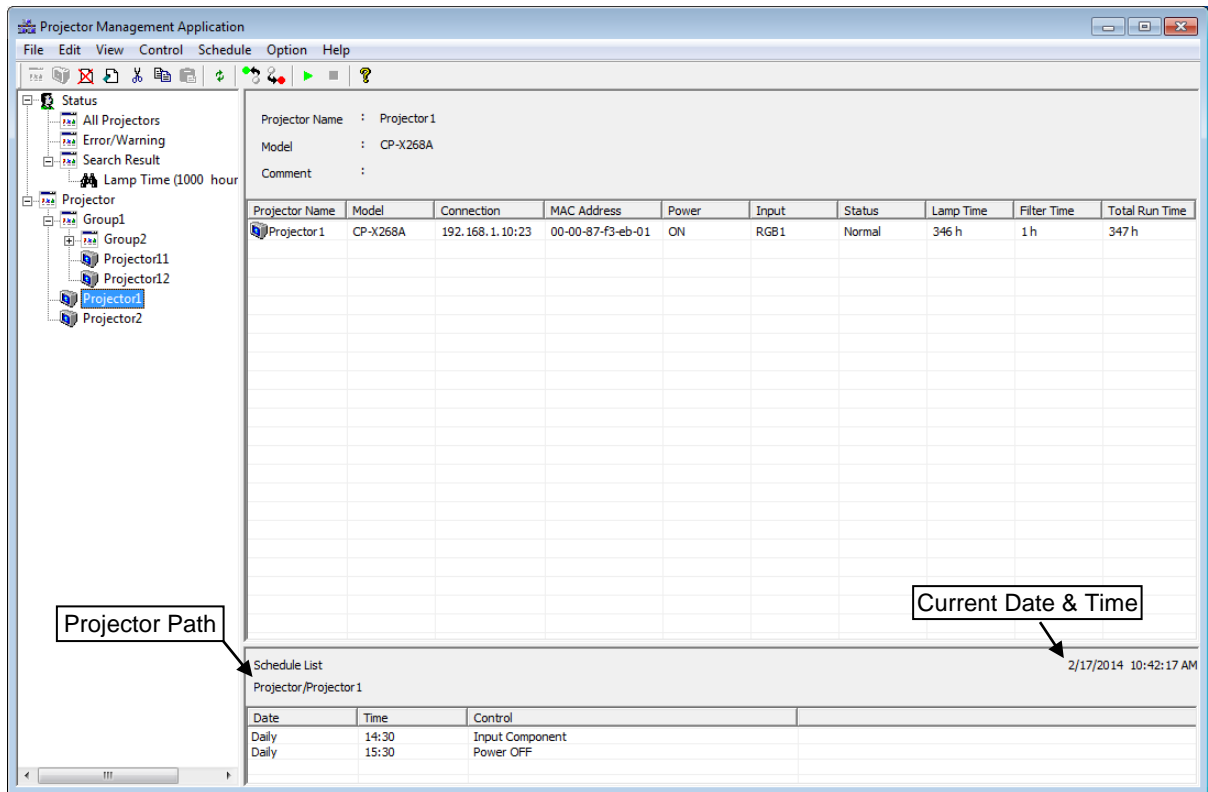
- Schedule List: Projector/
- Current Date & Time: 2/17/2014 10:41:53 AM

Date	Time	Control
Wednesday	15:00	Power OFF

Group Path
Current Time
Date
Time
Control

- Shows the full path name of selected group.
- Displays the current date and time.
- Displays the activation date.
- Displays the activation time.
- Displays the execute command.

(b) For an individual projector



- Group Path --- Shows the full path name of selected projector
- Current Time --- Displays the current date and time.
- Date --- Displays the activation date.
- Time --- Displays the activation time.
- Control --- Displays the execute command.

3.5 Add a group of projectors

You can define a group of projectors into the tree view. Select [Edit] → [Add Group] to add a group.

- Group Name --- Enter a group name up to 256 characters.
 Comment --- Enter a comment up to 256 characters.

Note: The maximum depth of sub groups is five levels.

3.6 Add an individual projector

You can define an individual projector into the tree view. Select [Edit] → [Add Projector] to add a projector.

- Projector Name --- Enter a projector name up to 256 characters.
 Model --- Select a model.
 Add Model --- Add new User-defined model. Please see the section 3.20 for details.
 Comment --- Enter a comment up to 256 characters.
 Connection --- Select a connection method.
 RS-232C --- Select when using RS-232C, and set COM Port.
 NETWORK --- Select when using network, and set IP Address and Port No
 ➤ Network Port No. of CP-X443, CP-X445, CP-X1200, CP-X1250, and CP-SX1350 is 23.
 ➤ Network Port No. of CPX2, CPX4, CP-DW10N, CP-A100, CP-AW100N, CP-X205, CP-X206, CP-S245, CP-X255, CP-X256, CP-X265, CP-X268A, CP-X305, CP-X306, CP-X308, CP-X417, CP-X467, CP-X505, CP-X605, CP-X608, CP-X615, CP-WX625, CP-SX635, CP-X705, CP-X807, CP-X809, CP-X2010N, CP-X2011N, CP-X2510N, CP-X2511N, CP-X3010N, CP-X3011N, CP-WX3011N, CP-X4011N, CP-X10000, CP-WX11000, CP-SX12000, ED-A100, ED-A110, ED-AW100N, ED-AW110N, ED-D10N, ED-D11N, ED-X45N, ED-X8255, CP-WUX645N, CP-X4021N, CP-X5021N, CP-WX4021N, CP-A220N, CP-A221N, CP-A222WN, CP-A300N, CP-A301N, CP-A302WN, ED-A220N, CP-AW250N, CP-AW251N, CP-AW252WN, iPJ-AW250N, BZ-1, CP-AW2519N, CP-X2514WN, CP-X3014WN, CP-X4014WN, CP-WX3014WN, CP-X2021WN, CP-X2521WN, CP-X3021WN, CPX10WN, CPX11WN, CPWX12WN, CP-X8150, CP-X8160, CP-WX8240, CP-WX8255, CP-SX8350, CP-WU8440, CP-WU8450, CP-X2015WN, CP-X2525WN, CP-X3015WN, CP-X4015WN, CP-WX2515WN, CP-WX3015WN, CP-A352WN, CP-AW312WN, CP-AW3019WN, CP-DW25WN, CP-DW30WN, CP-D27WN, CP-D32WN, CP-AX2503, CP-AX3003, CP-AX3503, CP-AW2503, CP-AW3003, CP-X4022WN, CP-WX4022WN, CP-X5022WN, CP-WU8460, CP-WX8265, CP-X8170, CP-WU9410, CP-WU9411, CP-WX9210, CP-WX9211, CP-X9110, CP-X9111, CP-X3030WN, CP-X2530WN, CP-WX3030WN, CP-EX250N, CP-EX300N, CP-EW250N, CP-EW300N, CP-CX300WN, CP-CW250WN, CP-CW300WN, MS-1 and MS-1WL is 23 or 9715.
 ➤ The password for the both authentications above is common.

[Discovery]	---	User can search for the projector (CPX2, CPX4, CP-DW10N, CP-A100, CP-AW100N, CP-X205, CP-X206, CP-S245, CP-X255, CP-X256, CP-X265, CP-X268A, CP-X305, CP-X306, CP-X308, CP-X417, CP-X467, CP-X505, CP-X605, CP-X608, CP-X615, CP-WX625, CP-SX635, CP-X705, CP-X807, CP-X809, CP-X2010N, CP-X2011N, CP-X2510N, CP-X2511N, CP-X3010N, CP-X3011N, CP-WX3011N, CP-X4011N, CP-X10000, CP-WX11000, CP-SX12000, ED-A100, ED-A110, ED-AW100N, ED-AW110N, ED-D10N, ED-D11N, ED-X45N, ED-X8255, CP-WUX645N, CP-X4021N, CP-X5021N, CP-WX4021N, CP-A220N, CP-A221N, CP-A222WN, CP-A300N, CP-A301N, CP-A302WN, ED-A220N, CP-AW250N, CP-AW251N, CP-AW252WN, iPJ-AW250N, BZ-1, CP-AW2519N, CP-X2514WN, CP-X3014WN, CP-X4014WN, CP-WX3014WN, CP-X2021WN, CP-X2521WN, CP-X3021WN, CPX10WN, CPX11WN, CPWX12WN, CP-X8150, CP-X8160, CP-WX8240, CP-WX8255, CP-SX8350, CP-WU8440, CP-WU8450, CP-X2015WN, CP-X2525WN, CP-X3015WN, CP-X4015WN, CP-WX2515WN, CP-WX3015WN, CP-A352WN, CP-AW312WN, CP-AW3019WN, CP-DW25WN, CP-DW30WN, CP-D27WN, CP-D32WN, CP-AX2503, CP-AX3003, CP-AX3503, CP-AW2503, CP-AW3003, CP-X4022WN, CP-WX4022WN, CP-X5022WN, CP-WU8460, CP-WX8265, CP-X8170, CP-WU9410, CP-WU9411, CP-WX9210, CP-WX9211, CP-X9110, CP-X9111, CP-X3030WN, CP-X2530WN, CP-WX3030WN, CP-EX250N, CP-EX300N, CP-EW250N, CP-EW300N, CP-CX300WN, CP-CW250WN, CP-CW300WN, MS-1, MS-1WL) when it is connected to the network.
Status Check	---	Check the check box if you want to enable the status polling. If it is not checked, the projector is ignored from the status check process and won't show up in the status list. It is registered in PJMan, but it excludes from the current status monitoring list.
Lamp Alarm Time	---	Define the lamp alarm / reminder period. The setting is effective for individual projector. If you don't want to enable this function, please set 0 hours.
Filter Alarm Time	---	Define the filter alarm / reminder period. The setting is effective for individual projector. If you don't want to enable this function, please set 0 hours.

The discovery feature allows you to search projectors on the network automatically. The discovery works when you are selecting a group or root. Select [Edit] → [Discovery] from the menu. The discovery window is shown below. Click start button to begin the discovery process.

Discovery window showing an empty table with columns: IP Address, MAC Address, Projector Name. Below the table, the checkbox "Specify an address range and search." is unchecked. There are input fields for Start address and End address, and buttons for Start, OK, and Close.

Discovery window showing a discovered projector in the table. The checkbox "Specify an address range and search." is unchecked. The table contains one row: 192.168.1.10, 00-1F-67-45-6C-70, PRJ_001F67456C70. Below the table, there is a progress bar and the text "DISCOVERY Complete". Buttons for Start, OK, and Close are present.

For searching certain IP address range, please specify the IP address range to enter Start and End address, and then check the checkbox "Specify an address range and search" and click the [Start] button. It will take several minutes depending upon the number of IP addresses needed to be scanned.

Discovery window showing the checkbox "Specify an address range and search." checked. The Start address is 192.168.1.1 and the End address is 192.168.1.20. Buttons for Start, OK, and Close are present.

Discovery window showing the checkbox "Specify an address range and search." checked. The Start address is 192.168.1.1 and the End address is 192.168.1.20. Below the table, there is a progress bar and the text "DISCOVERY Complete". Buttons for Start, OK, and Close are present.

When discovery finds projectors, the list of projectors is shown and [Register] button becomes available. You can register multiple projectors at the same time.

When the [Register] button is clicked, the projector is added under the group or root that you have selected. The projector name and model is automatically assigned. Please edit the name and model as needed.

Discovery window showing a discovered projector selected in the table. The checkbox "Specify an address range and search." is unchecked. The table contains one row: 192.168.1.10, 00-1F-67-45-6C-70, PRJ_001F67456C70. Below the table, there is a progress bar and the text "DISCOVERY Complete". Buttons for Start, OK, and Close are present.

[NOTE]

Windows Security Alert will be shown on your display when the discovery function activates, if Windows Firewall is "On" (Windows XP SP2 or later). Please choose "Unblock" to add the software onto the exception list. Other firewall security software may block the discovery function. In that case, please add the software to the safe list or disable firewall software when you use discovery function.

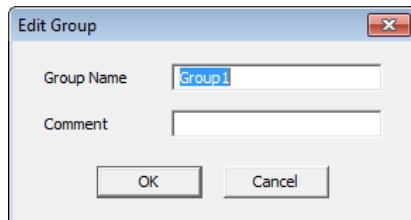
3.7 Delete a group or individual projector

You can delete a group of projectors or an individual projector. Click a group or projector in the tree view, select [Edit] → [Delete]. You can also delete a group or projector by clicking the delete icon on the toolbar. When the confirmation dialogue appears, select [OK] to delete.

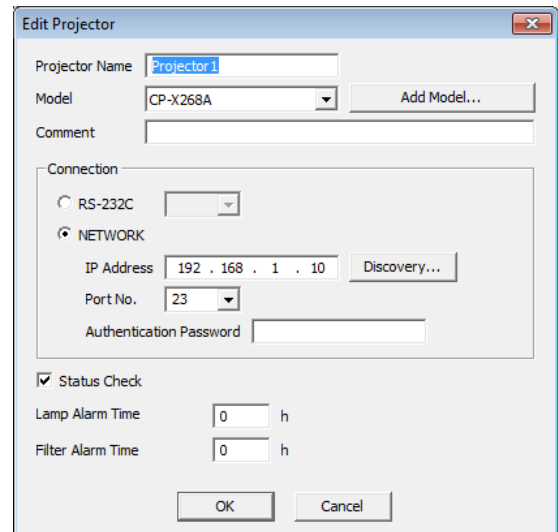
3.8 Change a group or individual projector settings

You can change a group or individual projectors settings. Click a group on the tree view, select [Edit] → [Edit]. Or Click a projector, select [Edit] → [Edit]. You can also change settings by clicking the edit icon on the toolbar.

→ The 'Edit Group' or 'Edit Projector' screen is shown below. Content to be set is same as 'Add Group' or 'Add Projector' screen.



The 'Edit Group' dialog box contains two text input fields: 'Group Name' with the value 'Group1' and 'Comment'. At the bottom are 'OK' and 'Cancel' buttons.



The 'Edit Projector' dialog box contains several fields and sections. At the top are 'Projector Name' (Projector1), 'Model' (CP-X268A), and 'Comment'. A 'Connection' section has radio buttons for 'RS-232C' and 'NETWORK' (selected). Below 'NETWORK' are 'IP Address' (192 . 168 . 1 . 10), 'Port No.' (23), and 'Authentication Password'. A 'Status Check' section has a checked checkbox and two 'Alarm Time' fields (Lamp and Filter) set to 0 h. At the bottom are 'OK' and 'Cancel' buttons.

3.9 Copy

You can copy the projector from the tree view. Select [Edit] → [Copy] on the menu after choosing a projector from the tree view. You can paste copied projectors by selecting [Edit] → [Copy] from the menu or click the "Paste" button on the tool bar.

Also you can copy projectors by drag and drop by holding down Ctrl key. Note that you cannot copy projectors if the name is the same of the destination projector.

3.10 Move

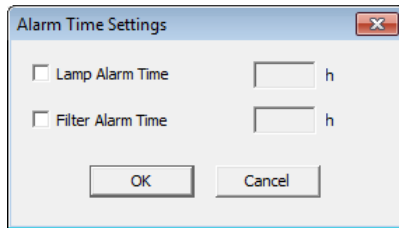
You can move projectors in the tree view. Select [Edit] → [Cut] on the menu or click "Cut" on the tool bar after choosing projectors on the tree view. You can paste copied projectors by selecting [Edit] → [Copy] from the menu or by clicking the "Paste" button on the tool bar.

You can also drag and drop projectors onto another projector group.

3.11 Applying alarm / reminder settings to projectors in a group

You can set alarm / reminder settings to multiple projectors in a group at the same time. Select the group that you want to set the alarm / reminder for and then select [Edit] → [Alarm Time Setting] from the menu. The Alarm Time Settings dialogue will appear. Check the checkbox and enter the hours that the alarm / reminder will be activated.

If you apply new settings to the group, the individual alarm / reminder setting on each projector will be overwritten.

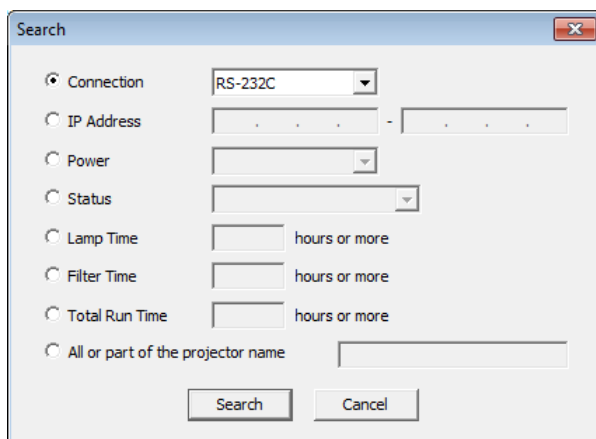


3.12 Update Status

Select [View] → [Refresh] to update status of a group or individual projector. This function only works when the status tab is displayed.

3.13 Search queries (in Status view)

In order to make the search queries, select [View] → [Search] from the menu. The Search dialogue will appear.



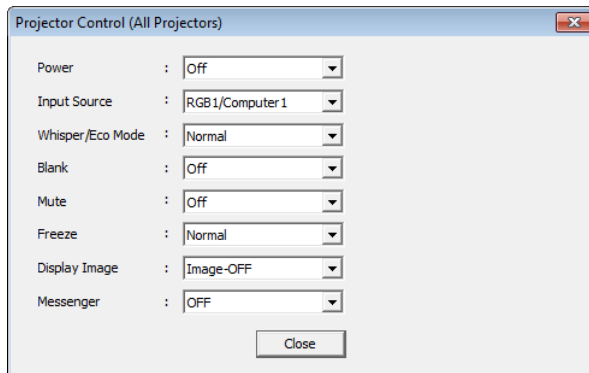
Connection	---	Search by connection type
IP Address	---	Search by IP address range
Power	---	Search by projector power status
Status	---	Search by error / warning status
Lamp Time	---	Search by lamp hours
Filter Time	---	Search by filter hours
Total Run Time	---	Search by total operation hours
All or part of the projector name	---	Search by projector name

The search group will be added to the Search Result tree, when you press [Search] bottom with given query. The list of projectors that are matched with your search query will be shown in the Status View.

3.14 Control the projector

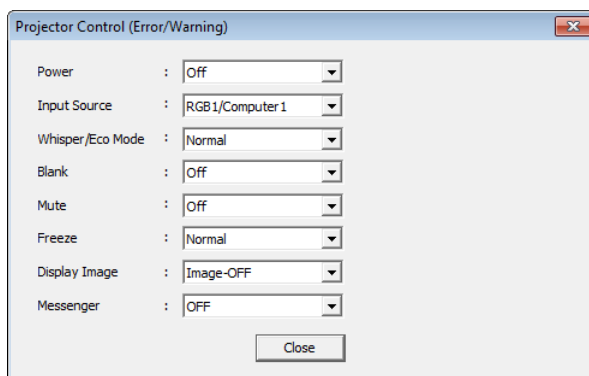
Select [Control] → [Projector Control] to control the projector. The controllable functions will be depending upon what group or projector is selected.

(a) In case of All Projectors selected



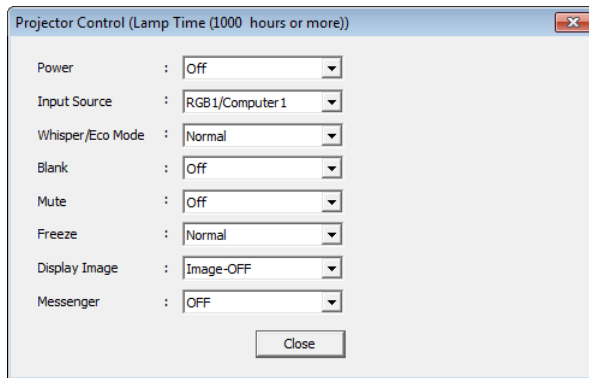
Power	---	Turn on / off power for a group of projectors.
Input Source	---	Change input source.
Whisper	---	Change Whisper / Eco mode.
Blank	---	Change blank on / off.
Mute	---	Change sound mute status.
Freeze	---	Change freeze status.
Display Image	---	Select My Image (e-SHOT) to display / OFF.
Messenger	---	Select Messenger to display / OFF.

(b) In case of Error/ Warning selected



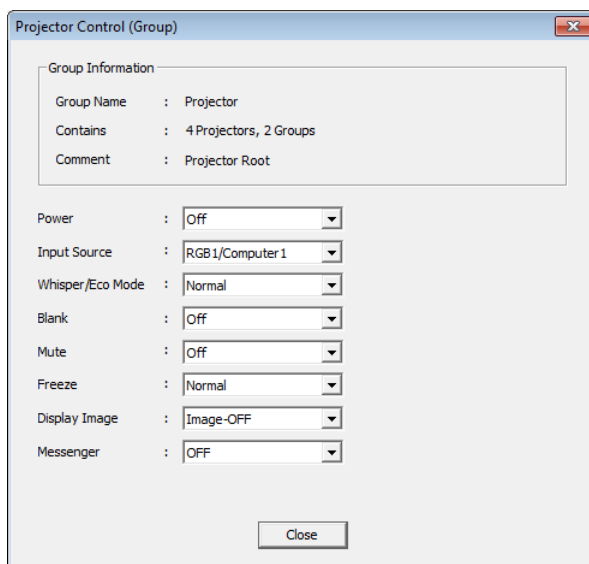
Power	---	Turn on / off power for a group of projectors.
Input Source	---	Change input source.
Whisper	---	Change Whisper / Eco mode.
Blank	---	Change blank on / off.
Mute	---	Change sound mute status.
Freeze	---	Change freeze status.
Display Image	---	Select My Image (e-SHOT) to display / OFF.
Messenger	---	Select Messenger to display / OFF.

(c) In case of Search Result item selected



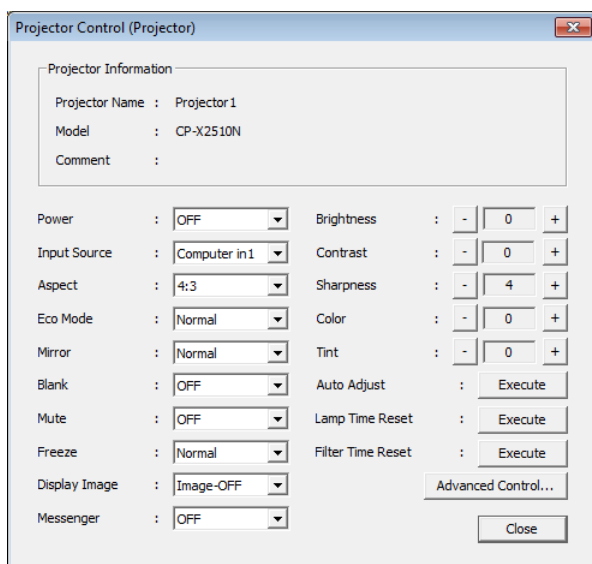
- | | | |
|---------------|-----|--|
| Power | --- | Turn on / off power for a group of projectors. |
| Input Source | --- | Change input source. |
| Whisper | --- | Change Whisper / Eco mode. |
| Blank | --- | Change blank on / off. |
| Mute | --- | Change sound mute status. |
| Freeze | --- | Change freeze status. |
| Display Image | --- | Select My Image (e-SHOT) to display / OFF. |
| Messenger | --- | Select Messenger to display / OFF. |

(d) In case of a group selected



- | | | |
|--------------------------|-----|--|
| Group Information | | |
| Group Name | --- | Displays the group name. |
| Contains | --- | Displays the number of projectors and groups in the group. |
| Comment | --- | Displays the comment. |
| | | |
| Power | --- | Turn on / off power for a group of projectors. |
| Input Source | --- | Change input source. |
| Whisper/Eco Mode | --- | Change Whisper / Eco mode. |
| Blank | --- | Change blank on / off. |
| Mute | --- | Change sound mute status. |
| Freeze | --- | Change freeze status. |
| Display Image | --- | Select My Image (e-SHOT) to display / OFF. |
| Messenger | --- | Select Messenger to display / OFF. |

(e) In case of an individual projector is selected



Projector Information

Projector Name --- Displays the projector name.
 Model --- Displays the model name.
 Comment --- Displays the comment.

Power --- Turn on / off power for a group of projectors.
 Input Source --- Change input source.
 Aspect --- Change aspect ratio.
 Whisper/Eco Mode --- Change Whisper / Eco mode.
 Mirror/Installation --- Change mirror / installation status.
 Blank --- Change blank on / off.
 Mute --- Change sound mute status.
 Freeze --- Change freeze status.
 Display Image --- Select My Image (e-SHOT) to display / OFF.
 Messenger --- Select Messenger to display / OFF.
 Brightness --- Change brightness.
 [-]: Decrease value.
 [+]: Increase value.
 Contrast --- Change contrast.
 [-]: Decrease value.
 [+]: Increase value.
 Sharpness --- Change sharpness.
 [-]: Decrease value.
 [+]: Increase value.
 Color --- Change color.
 [-]: Decrease value.
 [+]: Increase value.
 Tint --- Change tint.
 [-]: Decrease value.
 [+]: Increase value.
 Auto Adjust --- Execute auto image adjustment.
 Lamp Time Reset --- Reset the lamp time.
 Filter Time Reset --- Reset the filter time.
 Advanced Control --- Open the projector Advance Control Menu.
 ('Advanced Control' Screen varies depending on the projector model.)

3.15 Turn on the power

Select [Control] → [Power ON] to turn on the power. You can also turn on the power by clicking the power on icon on the toolbar. If you select a group of projectors, all projectors in the group are powered on.

3.16 Turn off the power

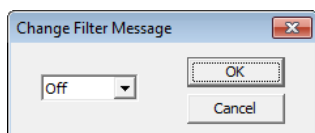
Select [Control] → [Power OFF] to turn off the power. You can also turn off the power by clicking the power off icon on the toolbar. If you select a group of projectors, all projectors in the group are powered off.

3.17 Display My Image (e-SHOT)

You can display My Image (e-SHOT) on projectors that supports My Image (e-SHOT) feature. The My Image (e-SHOT) is available for the following models, CPX2, CPX4, CP-DW10N, CP-A100, CP-AW100N, CP-X205, CP-X206, CP-S245, CP-X255, CP-X256, CP-X265, CP-X268A, CP-X305, CP-X306, CP-X308, CP-X417, CP-X467, CP-X505, CP-X605, CP-X608, CP-X615, CP-WX625, CP-SX635, CP-X705, CP-X807, CP-X809, CP-X2010N, CP-X2011N, CP-X2510N, CP-X2511N, CP-X3010N, CP-X3011N, CP-WX3011N, CP-X4011N, CP-X10000, CP-WX11000, CP-SX12000, ED-A100, ED-A110, ED-AW100N, ED-AW110N, ED-D10N, ED-D11N, ED-X45N, ED-X8255, CP-WUX645N, CP-X4021N, CP-X5021N, CP-WX4021N, CP-A220N, CP-A221N, CP-A222WN, CP-A300N, CP-A301N, CP-A302WN, ED-A220N, CP-AW250N, CP-AW251N, CP-AW252WN, iPJ-AW250N, BZ-1, CP-AW2519N, CP-X2514WN, CP-X3014WN, CP-X4014WN, CP-WX3014WN, CP-X2021WN, CP-X2521WN, CP-X3021WN, CPX10WN, CPX11WN, CPWX12WN, CP-X8150, CP-X8160, CP-WX8240, CP-WX8255, CP-SX8350, CP-WU8440, CP-WU8450, CP-X2015WN, CP-X2525WN, CP-X3015WN, CP-X4015WN, CP-WX2515WN, CP-WX3015WN, CP-A352WN, CP-AW312WN, CP-AW3019WN, CP-DW25WN, CP-DW30WN, CP-D27WN, CP-D32WN, CP-AX2503, CP-AX3003, CP-AX3503, CP-AW2503, CP-AW3003, CP-X4022WN, CP-WX4022WN, CP-X5022WN, CP-WU8460, CP-WX8265, CP-X8170, CP-WU9410, CP-WU9411, CP-WX9210, CP-WX9211, CP-X9110, CP-X9111, CP-X3030WN, CP-X2530WN, CP-WX3030WN, CP-CX300WN, CP-CW250WN, CP-CW300WN, MS-1 and MS-1WL. Select [Control] → [Display Image] and the image number, when you display My Image (e-SHOT). Select [Control] → [Display Image] → [Off], when you exit My Image (e-SHOT). If you choose projector group, My Image (e-SHOT) command is sent to the all projectors in the group.

3.18 Change Filter Message

You can configure the interval of Filter Message (cleaning reminder interval) from the menu. Select [Control] → [Filter Message] to display the configuration dialog window.



Select the desired interval period and press [OK]. If you are selecting a group in the tree view, all of projectors setting under the selected group will be changed. Please note that the change may not affect if the projector models are mixed in the group. In other words, the projector is not supported the selected interval, it will be ignored.

3.19 Schedule Events

In order to schedule events, select [Schedule] → [Edit] from the menu. The Edit Schedule dialogue will appear.

The 'Edit Schedule' dialog box shows the 'Group Information' tab. It contains fields for Group Name, Contains, and Comment. Below these is a table with columns Date, Time, and Control. The table has one row with 'Wednesday', '15:00', and 'Power OFF'. At the bottom are buttons for 'Add...', 'Delete', and 'Close'.

Date	Time	Control
Wednesday	15:00	Power OFF

Group selected

The 'Edit Schedule' dialog box shows the 'Projector Information' tab. It contains fields for Projector Name, Model, and Comment. Below these is a table with columns Date, Time, and Control. The table has two rows: 'Daily' at '14:30' with 'Input Component', and 'Daily' at '15:30' with 'Power OFF'. At the bottom are buttons for 'Add...', 'Delete', and 'Close'.

Date	Time	Control
Daily	14:30	Input Component
Daily	15:30	Power OFF

Projector selected

Group Information

- Group Name --- Displays the group name.
- Contains --- Displays the number of projectors and groups in the group.
- Comment --- Displays the comment.

Projector Information

- Projector Name --- Displays the projector name.
- Model --- Displays the model name.
- Comment --- Displays the comment.

Schedule List

- [Add] --- Add a new event
- [Delete] --- Delete a selected event
- [Close] --- Close the dialogue

The Add Schedule dialogue will appear when you are adding a new event.

The 'Add Schedule' dialog box has fields for Schedule Kind (a dropdown menu), Date (a date picker), Time (a time picker), and Control (a dropdown menu). At the bottom are 'OK' and 'Cancel' buttons.

- Schedule Kind --- Select a following schedule type.
Daily / Sunday / Monday / Tuesday / Wednesday / Thursday / Friday / Saturday /
Specific date
- Date --- Specify the event date for Specific date schedule type
- Time --- Specify the event time
- Control --- Specify the event
- [OK] --- Add the event and close the dialogue

3.20 Activate monitoring scheduled events

Select [Schedule] → [Start]. You can also activate monitoring events by clicking the schedule start icon on the toolbar. You cannot add, delete or edit an event during while the event monitoring process is active. Please see the chapter 5 for the details.

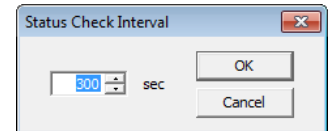
3.21 Stop monitoring scheduled events

Select [Schedule] → [Stop]. You can also stop the monitoring events by clicking [schedule stop] icon on the toolbar. Please see the chapter 5 for the details.

3.22 Polling Interval Period

Select [Option] → [Status Check Interval], enter the polling interval time in seconds.

The polling interval time must be within the range from 10 to 3600 seconds.

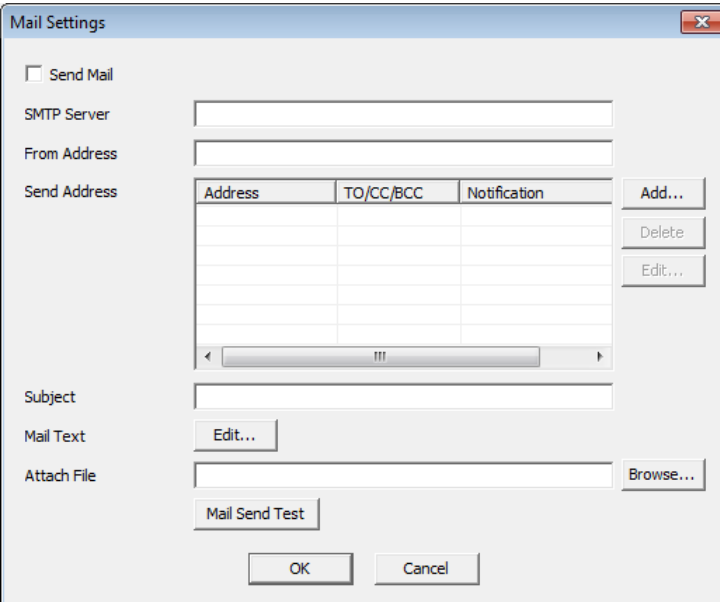


3.23 Mail Setting

A notification mail will be sent when any error or selected condition occurs. Select [Option] → [Mail Settings] to open the mail settings dialogue.

(1) Mail Settings

Mail Settings dialog is as follows.



The Mail Settings dialog box contains the following fields and controls:

- ☐ Send Mail
- SMTP Server: [Text Field]
- From Address: [Text Field]
- Send Address:

Address	TO/CC/BCC	Notification

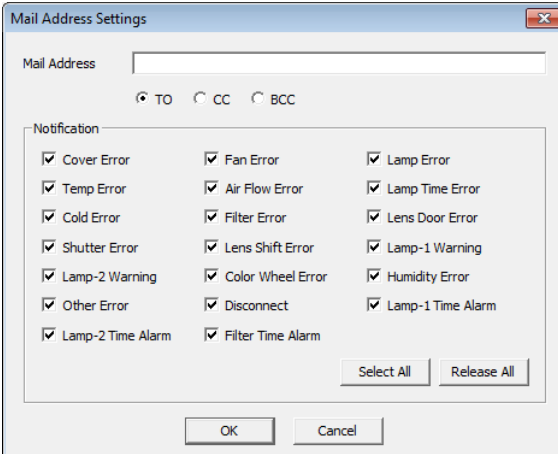
 Add... Delete Edit...
- Subject: [Text Field]
- Mail Text: [Edit...]
- Attach File: [Text Field] Browse...
- Mail Send Test
- OK Cancel

- | | | |
|----------------|-----|--|
| Send Mail | --- | Enable / Disable send mail function |
| SMTP Server | --- | Enter the SMTP Server |
| From Address | --- | Enter the sender's mail address |
| Send Address | --- | Enter the receiver's mail addresses up to 10 addresses |
| | | [Add]: Add a receiver's mail address |
| | | [Delete]: Delete a receiver's mail address |
| | | [Edit]: Edit receiver's mail address |
| Subject | --- | Enter the subject |
| Mail Text | --- | Mail Text Setting screen appears to set the mail message |
| Attach File | --- | Enter the file name of attached file (optional) |
| | | [Browse]: File dialogue appears |
| Mail Send Test | --- | Send a test mail |

(2) Mail Address Settings

Mail Address Setting dialogue is as follows.

- Mail Address --- Enter the mail address to be sent, up to 256 characters.
 [TO][CC][BCC]: Select TO / CC / BCC.
- Notification --- Chose the Error / Alarm to send the mail.
 [Select All]: Turn all the check box ON.
 [Release All]: Turn all the check box OFF.



The Mail Address Settings dialog box contains the following fields and controls:

- Mail Address: [Text Field]
- TO CC BCC (radio buttons)
- Notification:

<input checked="" type="checkbox"/> Cover Error	<input checked="" type="checkbox"/> Fan Error	<input checked="" type="checkbox"/> Lamp Error
<input checked="" type="checkbox"/> Temp Error	<input checked="" type="checkbox"/> Air Flow Error	<input checked="" type="checkbox"/> Lamp Time Error
<input checked="" type="checkbox"/> Cold Error	<input checked="" type="checkbox"/> Filter Error	<input checked="" type="checkbox"/> Lens Door Error
<input checked="" type="checkbox"/> Shutter Error	<input checked="" type="checkbox"/> Lens Shift Error	<input checked="" type="checkbox"/> Lamp-1 Warning
<input checked="" type="checkbox"/> Lamp-2 Warning	<input checked="" type="checkbox"/> Color Wheel Error	<input checked="" type="checkbox"/> Humidity Error
<input checked="" type="checkbox"/> Other Error	<input checked="" type="checkbox"/> Disconnect	<input checked="" type="checkbox"/> Lamp-1 Time Alarm
<input checked="" type="checkbox"/> Lamp-2 Time Alarm	<input checked="" type="checkbox"/> Filter Time Alarm	

 Select All Release All
- OK Cancel

(3) Mail Text Settings

Mail Text Settings dialogue is as follows.

Error/Warning	Text Message
Cover Error	Cover Error !!!
Fan Error	Fan Error !!!
Lamp Error	Lamp Error !!!
Temp Error	Temp Error !!!
Air Flow Error	Air Flow Error !!!
Lamp Time Error	Lamp Time Error !!!
Filter Error	Cold Error !!!
Filter Error	Filter Error !!!
Lens Door Error	Lens Door Error !!!
Shutter Error	Shutter Error !!!
Lens Shift Error	Lens Shift Error !!!
Lamp-1 Warning	Lamp-1 Warning !!!
Lamp-2 Warning	Lamp-2 Warning !!!
Color Wheel Error	Color Wheel Error !!!
Humidity Error	Humidity Error !!!
Other Error	Other Error !!!
Disconnect	Disconnected !!!
Lamp-1 Time Alarm	Lamp(Lamp-1) Time Alarm !!!
Lamp-2 Time Alarm	Lamp-2 Time Alarm !!!
Filter Time Alarm	Filter Time Alarm !!!

Cover Error	---	Enter the text message, which is sent when Cover Error occurs
Fan Error	---	Enter the text message, which is sent when Fan Error occurs
Lamp Error	---	Enter the text message, which is sent when Lamp Error occurs
Temp Error	---	Enter the text message, which is sent when Temp Error occurs
Air Flow Error	---	Enter the text message, which is sent when Air Flow Error occurs
Lamp Time Error	---	Enter the text message, which is sent when Lamp Time Error occurs
Cold Error	---	Enter the text message, which is sent when Cold Error occurs
Filter Error	---	Enter the text message, which is sent when Filter Error occurs
Lens Door Error	---	Enter the text message, which is sent when Lens Door Error occurs
Shutter Error	---	Enter the text message, which is sent when Shutter Error occurs
Lens Shift Error	---	Enter the text message, which is sent when Lens Shift Error occurs
Lamp-1 Warning	---	Enter the text message, which is sent when Lamp-1 Warning occurs
Lamp-2 Warning	---	Enter the text message, which is sent when Lamp-2 Warning occurs
Color Wheel Error	---	Enter the text message, which is sent when Color Wheel Error occurs
Humidity Error	---	Enter the text message, which is sent when Humidity Error occurs
Other Error	---	Enter the text message, which is sent when Other Error occurs
Disconnect	---	Enter the text message, which is sent when connection is disconnected
Lamp-1 Time Alarm	---	Enter the text message, which is sent when Lamp Alarm Time comes
Lamp-2 Time Alarm	---	Enter the text message, which is sent when Lamp Alarm Time comes
Filter Time Alarm	---	Enter the text message, which is sent when Filter Alarm Time comes

3.24 My Image (e-SHOT) transfer

You can send a My Image (e-SHOT) file to a projector that supports My Image (e-SHOT) feature. This function is available for the following models, CP-DW10N, CP-A100, CP-AW100N, CP-X205, CP-X206, CP-S245, CP-X255, CP-X256, CP-X265, CP-X305, CP-X306, CP-X505, CP-X605, CP-X615, CP-WX625, CP-SX635, CP-X705, CP-X2010N, CP-X2011N, CP-X2510N, CP-X2511N, CP-X3010N, CP-X3011N, CP-WX3011N, CP-X4011N, CP-X10000, CP-WX11000, CP-SX12000, ED-A100, ED-A110, ED-AW100N, ED-AW110N, ED-D10N, ED-D11N, ED-X45N, ED-X8255, CP-WUX645N, CP-X4021N, CP-X5021N,

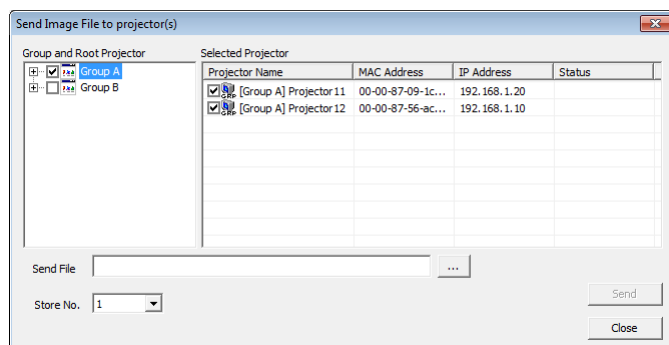
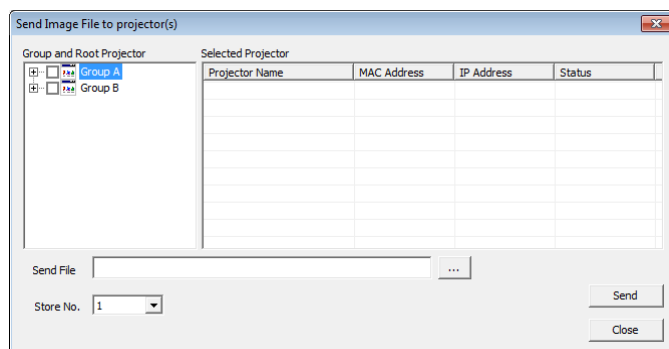
CP-WX4021N, CP-A220N, CP-A221N, CP-A222WN, CP-A300N, CP-A301N, CP-A302WN, ED-A220N, CP-AW250N, CP-AW251N, CP-AW252WN, iPJ-AW250N, BZ-1, CP-AW2519N, CP-X2514WN, CP-X3014WN, CP-X4014WN, CP-WX3014WN, CP-X2021WN, CP-X2521WN, CP-X3021WN, CPX10WN, CPX11WN, CPWX12WN, CP-X8150, CP-X8160, CP-WX8240, CP-WX8255, CP-SX8350, CP-WU8440, CP-WU8450, CP-X2015WN, CP-X2525WN, CP-X3015WN, CP-X4015WN, CP-WX2515WN, CP-WX3015WN, CP-A352WN, CP-AW312WN, CP-AW3019WN, CP-DW25WN, CP-DW30WN, CP-D27WN, CP-D32WN, CP-AX2503, CP-AX3003, CP-AX3503, CP-AW2503, CP-AW3003, CP-X4022WN, CP-WX4022WN, CP-X5022WN, CP-WU8460, CP-WX8265, CP-X8170, CP-WU9410, CP-WU9411, CP-WX9210, CP-WX9211, CP-X9110, CP-X9111, CP-X3030WN, CP-X2530WN, CP-WX3030WN, CP-CX300WN, CP-CW250WN, CP-CW300WN, MS-1 and MS-1WL.

The CPX2, CPX4, CP-X268A, CP-X308, CP-X417, CP-X467, CP-X608, CP-X807 and CP-X809 support My Image (e-SHOT) also, but this tool is not supported those models due to transfer mechanism difference. Please refer to the Projector Transfer Application which supports this feature for these models.

Select [Option] → [Image Send] to display the window “Send Image file to projector(s)” as shown next.

In order to add projectors on the list, please mark the projector group on the tree view. Also you can unselect projector individually.

Once you select the image file and store location number, the “Send” button becomes available. The compatible image file is only PJ1 format file that can be created by Projector Image Tool (PJImg). And then, click the Send button to transfer image. The maximum size of transferred file is depending on the model. Please check the following list.



PJ1 format file

CP-S245 / CP-X255 / ED-X8255

Less than equal 65, 280 byte

CP-DW10N / CP-A100 / CP-AW100N / CP-X205 / CP-X206 / CP-X256 / CP-X265 / CP-X305 / CP-X306 / CP-X505 / CP-X605 / CP-X615 / CP-WX625 / CP-SX635 / CP-X705 / CP-X2010N / CP-X2011N / CP-X2510N / CP-X2511N / CP-X3010N / CP-X3011N / CP-WX3011N / CP-X4011N / CP-X10000 / CP-WX11000 / CP-SX12000 / ED-A100 / ED-A110 / ED-AW100N / ED-AW110N / ED-D10N / ED-D11N / ED-X45N / CP-WUX645N / CP-X4021N / CP-X5021N / CP-WX4021N / CP-A220N / CP-A221N / CP-A222WN / CP-A300N / CP-A301N / CP-A302WN / ED-A220N / CP-AW250N / CP-AW251N / CP-AW252WN / iPJ-AW250N / BZ-1 / CP-AW2519N / CP-X2514WN / CP-X3014WN / CP-X4014WN / CP-WX3014WN / CP-X2021WN / CP-X2521WN / CP-X3021WN / CPX10WN / CPX11WN / CPWX12WN / CP-X8150 / CP-X8160 / CP-WX8240 / CP-WX8255 / CP-SX8350 / CP-WU8440 / CP-WU8450 / CP-X2015WN / CP-X2525WN / CP-X3015WN / CP-X4015WN / CP-WX2515WN / CP-WX3015WN / CP-A352WN / CP-AW312WN / CP-AW3019WN / CP-DW25WN / CP-DW30WN / CP-D27WN / CP-D32WN / CP-AX2503 / CP-AX3003 / CP-AX3503 / CP-AW2503 / CP-AW3003 / CP-X4022WN / CP-WX4022WN / CP-X5022WN / CP-WU8460 / CP-WX8265 / CP-X8170 / CP-WU9410 / CP-WU9411 / CP-WX9210 / CP-WX9211 / CP-X9110 / CP-X9111 / CP-X3030WN / CP-X2530WN / CP-WX3030WN / CP-CX300WN / CP-CW250WN / CP-CW300WN / MS-1 / MS-1WL

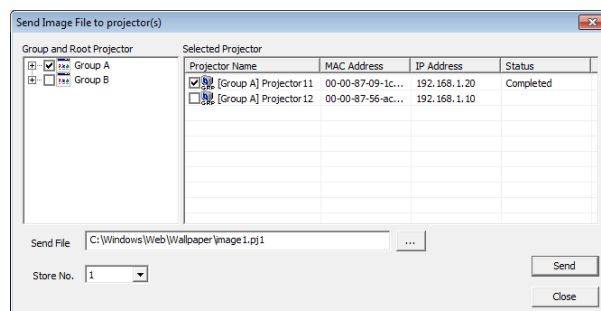
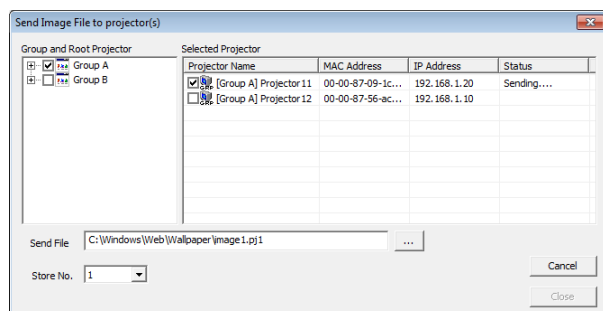
Less than equal 130,816byte

JPEG file

CP-X2011N / CP-X2511N / CP-X3011N / CP-WX3011N / CP-X4011N / ED-X45N / CP-X4021N / CP-X5021N / CP-WX4021N / CP-A220N / CP-A221N / CP-A222WN / CP-A300N / CP-A301N / CP-A302WN / ED-A220N / CP-AW250N / CP-AW251N / CP-AW252WN / iPJ-AW250N / BZ-1 / CP-AW2519N / CP-X2514WN / CP-X3014WN / CP-X4014WN / CP-WX3014WN / CP-X2021WN / CP-X2521WN / CP-X3021WN / CPX10WN / CPX11WN / CPWX12WN / CP-X8150 / CP-X8160 / CP-WX8240 / CP-WX8255 / CP-SX8350 / CP-WU8440 / CP-WU8450 / CP-X2015WN / CP-X2525WN / CP-X3015WN / CP-X4015WN / CP-WX2515WN / CP-WX3015WN / CP-A352WN / CP-AW312WN / CP-AW3019WN / CP-DW25WN / CP-DW30WN / CP-D27WN / CP-D32WN / CP-AX2503 / CP-AX3003 / CP-AX3503 / CP-AW2503 / CP-AW3003 / CP-X4022WN / CP-WX4022WN / CP-X5022WN / CP-WU8460 / CP-WX8265 / CP-X8170 / CP-WU9410 / CP-WU9411 / CP-WX9210 / CP-WX9211 / CP-X9110 / CP-X9111 / CP-X3030WN / CP-X2530WN / CP-WX3030WN / CP-CX300WN / CP-CW250WN / CP-CW300WN / MS-1 / MS-1WL

Less than equal 262,144byte

The status is shown during transfer. The status will change “Completed” if it succeeds.



[Note]

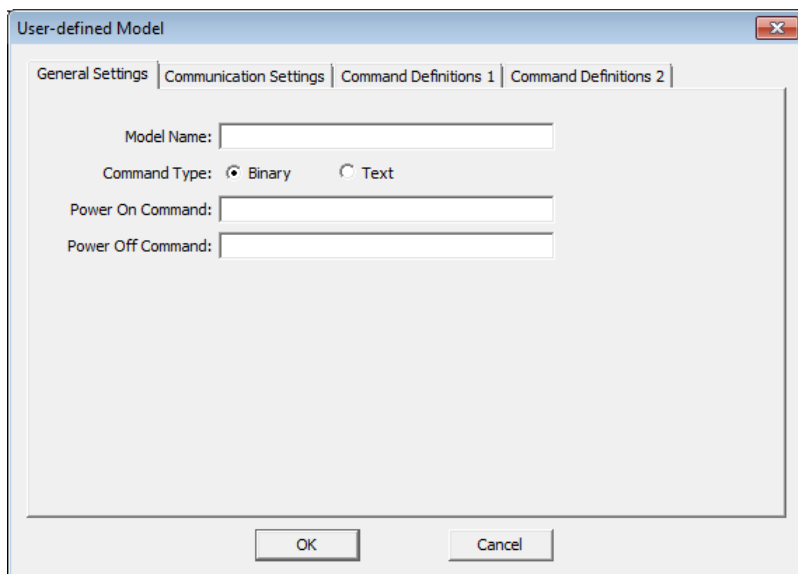
Please verify the port setting on the projector and the port / authentication setting on the application.

3.25 User-defined Model

3.25.1 Add an User-defined Model

You can create your own projector definition and add it as User-defined model. In order to add new User-defined model, click [Add Model...] button on the Add Projector window. Once you have added a User-defined model, the new model is added in the standard model list.

(1) General Settings

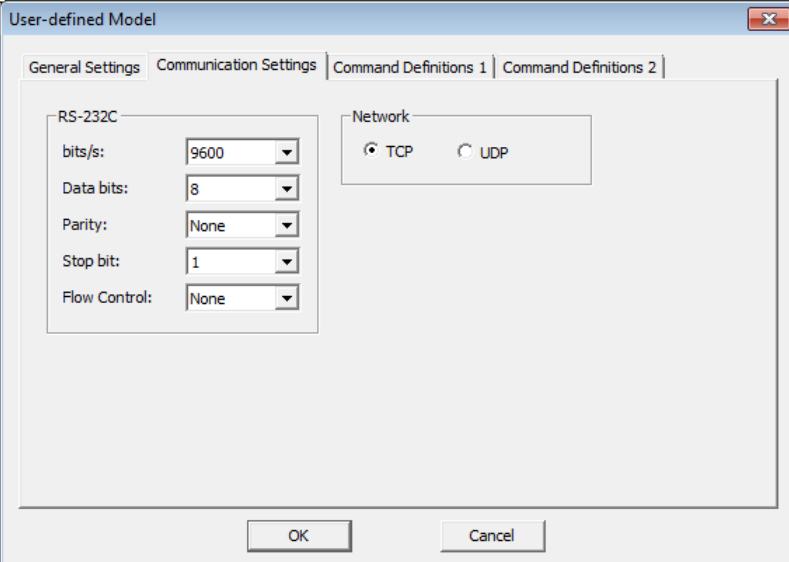


- Model Name --- Enter the name of User-defined model
- Command Type --- Select command type with Binary or Text (ASCII)
- Power On Command --- Define Power On command. Up to 32 ASCII character length.
Binary type command
Ex: BEEF030600BAD2010000600100
* Only 0-9, a-f and A-F are available to enter.
Text type command
Ex: POWER ON[CR]
* Control characters are defined as below.
- Power Off Command --- Define Power Off command. Up to 32 ASCII character length.
Binary type command
Ex: BEEF0306002AD3010000600000
* Only 0-9, a-f and A-F are available to enter.
Text type command
Ex: POWER OFF[CR]
* Control characters are defined as below.

Control Characters

Control Character	Notation	Control Character	Notation	Control Character	Notation
NUL	0x00 [NUL]	VT	0x0b [VT]	SYN	0x16 [SYN]
SOH	0x01 [SOH]	NP	0x0c [NP]	ETB	0x17 [ETB]
STX	0x02 [STX]	CR	0x0d [CR]	CAN	0x18 [CAN]
ETX	0x03 [ETX]	SO	0x0e [SO]	EM	0x19 [EM]
EOT	0x04 [EOT]	SI	0x0f [SI]	SUB	0x1a [SUB]
ENQ	0x05 [ENQ]	DLE	0x10 [DLE]	ESC	0x1b [ESC]
ACK	0x06 [ACK]	DC1	0x11 [DC1]	FS	0x1c [FS]
BEL	0x07 [BEL]	DC2	0x12 [DC2]	GS	0x1d [GS]
BS	0x08 [BS]	DC3	0x13 [DC3]	RS	0x1e [RS]
HT	0x09 [HT]	DC4	0x14 [DC4]	US	0x1f [US]
LF	0x0a [LF]	NAK	0x15 [NAK]	DEL	0x7f [DEL]

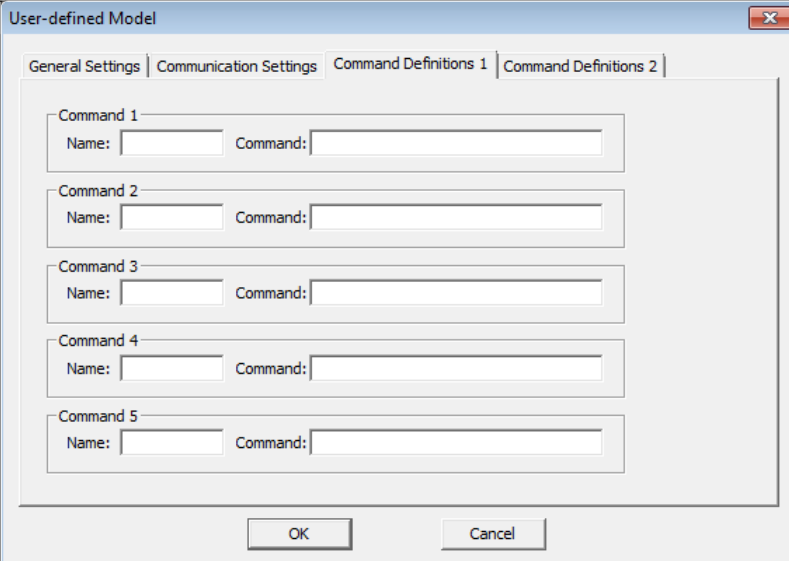
(2) Communication Settings



The dialog box 'User-defined Model' has four tabs: 'General Settings', 'Communication Settings' (selected), 'Command Definitions 1', and 'Command Definitions 2'. The 'Communication Settings' tab contains two sections. The 'RS-232C' section has five dropdown menus: 'bits/s:' (9600), 'Data bits:' (8), 'Parity:' (None), 'Stop bit:' (1), and 'Flow Control:' (None). The 'Network' section has two radio buttons: 'TCP' (selected) and 'UDP'.

RS-232C	---	COM port parameter setting (if RS232C uses)
bits/s	---	Baud rate
Data bits	---	Data bit
Parity	---	Parity bit
Stop bit	---	Stop bit
Flow Control	---	Flow control
Network	---	Select network protocol (TCP or UDP)

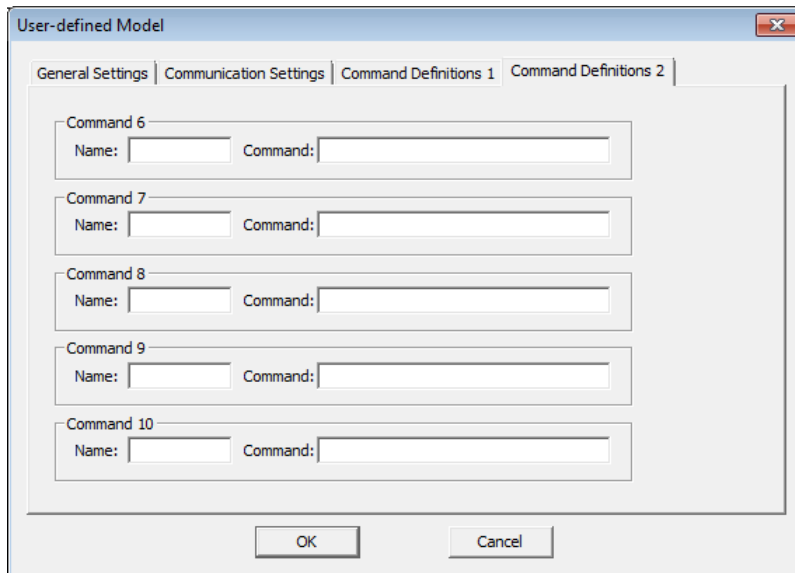
(3) Command Definitions 1



The dialog box 'User-defined Model' has four tabs: 'General Settings', 'Communication Settings', 'Command Definitions 1' (selected), and 'Command Definitions 2'. The 'Command Definitions 1' tab contains five command definition sections, each with a 'Name:' and 'Command:' text input field. The sections are labeled 'Command 1' through 'Command 5'.

Name	---	Enter the name of command, up to 32 ASCII characters.
Command	---	Define the command up to 32 ASCII characters. The allowed characters are depending on the command type selection (binary or Text) on the General Setting TAB.

(4) Command Definitions 2



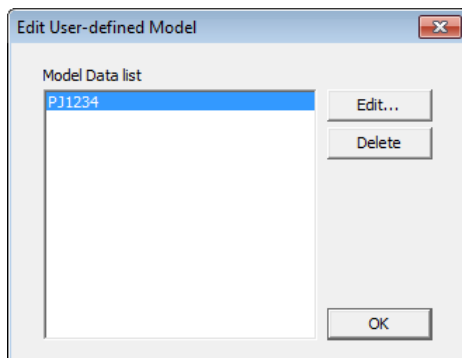
The 'User-defined Model' dialog box has four tabs: 'General Settings', 'Communication Settings', 'Command Definitions 1', and 'Command Definitions 2'. The 'Command Definitions 2' tab is active. It contains five command definition groups, labeled 'Command 6' through 'Command 10'. Each group has a 'Name:' text box and a 'Command:' text box. At the bottom of the dialog are 'OK' and 'Cancel' buttons.

Name --- Enter the name of command, up to 32 ASCII characters.

Command --- Define the command up to 32 ASCII characters. The allowed characters are depending on the command type selection (binary or Text) on the General Setting TAB.

3.25.2 Edit User-defined Model

In order to edit User-defined model, select [Option] → [Edit User-defined Model]. The following window will appear.



The 'Edit User-defined Model' dialog box features a 'Model Data list' on the left, which contains a single entry 'PJ1234' highlighted in blue. To the right of the list are two buttons: 'Edit...' and 'Delete'. At the bottom right of the dialog is an 'OK' button.

(1) Edit

Choose a User-defined Model from the list, and then click [Edit...] button.

(2) Delete

Choose a User-defined model from the list, and then click [Delete...] button. The confirmation message will be appeared. The deleted model on the projector tree will be removed when the User-defined Model definition is deleted.

3.25.3 Control User-defined Model

- (1) Power On
Select [Control] → [Power ON] to turn on the power. You can also turn on the power by clicking the power on icon on the toolbar. If you select a group of projectors, all projectors in the group are powered on.
- (2) Power Off
Select [Control] → [Power OFF] to turn off the power. You can also turn off the power by clicking the power off icon on the toolbar. If you select a group of projectors, all projectors in the group are powered off.
- (3) Command No.1-10
Select [Control] → [Execute Command] to execute a command.
- (4) Schedule
Only Power On / Off commands are allowed as the schedule event for User-defined model.

3.26 Open the built-in HTML page of the projector

You can access the projector built-in HTML page from PJMan directly. Select the projector from the tree view, and then go to [Option] → [Open with] from the menu. The default browser on your computer will launch automatically and access the selected projector HTML page. This function supports embedded network projector models only.

3.27 Setup PJMessage to Projector

For projectors that support Message function, PJMan allows you to setup PJMessenger message from PJMessenger file (pjm file), that is exported from another application software - Projector Messenger Tool (PJMessenger).

Select projector(s) from the tree view, then go [Option] → [Send Messenger data]. The following dialog will be displayed. It will populate only the projectors that supports PJMessenger function.

Projector Name	Model	IP Address	MAC Address	Status
<input checked="" type="checkbox"/> Projector 1	CP-X2514WN	192.168.1.10	00-1f-67-45-6c-70	
<input checked="" type="checkbox"/> Projector 2	CP-X2514WN	192.168.1.20	00-1f-67-45-6c-20	

Send File: ...

Store No.: Quick ▾

Send Close

Mark the checkbox in the Projector name field to select the projectors that you want to upload the PJMessage file. Send button will be enabled when you choose PJMessenger file and store location number.

Projector Name	Model	IP Address	MAC Address	Status
<input checked="" type="checkbox"/> Projector 1	CP-X2514WN	192.168.1.10	00-1f-67-45-6c-70	
<input checked="" type="checkbox"/> Projector 2	CP-X2514WN	192.168.1.20	00-1f-67-45-6c-20	

Send File: C:\Program Files (x86)\Projector Tools\Projector Messenger Tool\MessageD... ..

Store No.: Quick ▾

Send Close

Press [Send] button to start the load process. The status field will be shown as "Completed" when the process is done.

Projector Name	Model	IP Address	MAC Address	Status
<input checked="" type="checkbox"/> Projector 1	CP-X2514WN	192.168.1.10	00-1f-67-45-6c-70	Completed
<input checked="" type="checkbox"/> Projector 2	CP-X2514WN	192.168.1.20	00-1f-67-45-6c-20	Completed

Send File: C:\Program Files (x86)\Projector Tools\Projector Messenger Tool\MessageD... ..

Store No.: Quick ▾

Send Close

3.28 About Dialogue

Select [Help] → [About] to open the about dialogue.

4 Mail Feature

4.1 Mail Format

The Projector Management Application sends an e-mail by following format.

```
Time : YYYY / MM / DD hh:nn:ss  
Projector Name : xxxxxx  
Connection: xxxxxx  
Message: xxxxxxxxxxxxxxxxxx (Typed in text on Message Setting screen)
```

(Sample 1)

```
Time: 2003 / 11 / 11 23:12:22  
Projector Name: Projector1  
Connection: 192.168.1.10 (00-00-87-16-8E-90)  
Message: Fan Error!!!
```

(Sample 2)









```
Time: 2003/11/12 20:00:17  
Projector Name: Projector2  
Connection: COM1  
Message: Lamp Error!!!
```

4.2 Others

The e-mail sending process is triggered by the transition from normal status to error (or event) mode. When an error happens at the startup, this Projector Management Software application will not send e-mail.

5 Status

The projector status is classified with colored label.

Status	Display	
Normal	 Projector 1	(Black text with white background)
Warning	 Projector 1	(Black text on yellow background)
Error	 Projector 1	(White text on brown background)
Disconnect	 Projector 1	(White text on red background)
All of projectors are normal	 Group A	(Black text on white background)
At least one projector is in the warning state and the rest of projectors are either warning or normal state.	 Group A	(Black text on yellow background)
At least one projector is in the error state and the rest of projectors are either warning or normal state.	 Group A	(White text on brown background)
At least one projector is in the disconnect state, and rest of projectors are error, warning or normal.	 Group A	(White text on red background)

Each projector is classified by the colored label on the list of the projector when the user selects a group.

Status	Display																				
Normal	<table><tr><th>Projector Name</th><th>Connection</th><th>MAC Address</th><th>Power</th><th>I</th></tr><tr><td>Projector 1</td><td>192.168.1.10:23</td><td>00-00-87-56-ac-92</td><td>OFF</td><td>F</td></tr><tr><td>Projector 2</td><td>COM1</td><td></td><td>OFF</td><td>F</td></tr></table>					Projector Name	Connection	MAC Address	Power	I	Projector 1	192.168.1.10:23	00-00-87-56-ac-92	OFF	F	Projector 2	COM1		OFF	F	(Black text with white background)
Projector Name	Connection	MAC Address	Power	I																	
Projector 1	192.168.1.10:23	00-00-87-56-ac-92	OFF	F																	
Projector 2	COM1		OFF	F																	
Warning	<table><tr><th>Projector Name</th><th>Connection</th><th>MAC Address</th><th>Power</th><th>I</th></tr><tr><td>Projector 1</td><td>192.168.1.10:23</td><td>00-00-87-56-ac-92</td><td>OFF</td><td>F</td></tr><tr><td>Projector 2</td><td>COM1</td><td></td><td>OFF</td><td>F</td></tr></table>					Projector Name	Connection	MAC Address	Power	I	Projector 1	192.168.1.10:23	00-00-87-56-ac-92	OFF	F	Projector 2	COM1		OFF	F	(Black text on yellow background)
Projector Name	Connection	MAC Address	Power	I																	
Projector 1	192.168.1.10:23	00-00-87-56-ac-92	OFF	F																	
Projector 2	COM1		OFF	F																	
Error	<table><tr><th>Projector Name</th><th>Connection</th><th>MAC Address</th><th>Power</th><th>I</th></tr><tr><td>Projector 1</td><td>192.168.1.10:23</td><td>00-00-87-56-ac-92</td><td>OFF</td><td>F</td></tr><tr><td>Projector 2</td><td>COM1</td><td></td><td>OFF</td><td>F</td></tr></table>					Projector Name	Connection	MAC Address	Power	I	Projector 1	192.168.1.10:23	00-00-87-56-ac-92	OFF	F	Projector 2	COM1		OFF	F	(White text on brown background)
Projector Name	Connection	MAC Address	Power	I																	
Projector 1	192.168.1.10:23	00-00-87-56-ac-92	OFF	F																	
Projector 2	COM1		OFF	F																	
Disconnect	<table><tr><th>Projector Name</th><th>Connection</th><th>MAC Address</th><th>Power</th><th>I</th></tr><tr><td>Projector 1</td><td>192.168.1.10:23</td><td>00-00-87-56-ac-92</td><td>OFF</td><td>F</td></tr><tr><td>Projector 2</td><td>COM1</td><td></td><td>OFF</td><td>F</td></tr></table>					Projector Name	Connection	MAC Address	Power	I	Projector 1	192.168.1.10:23	00-00-87-56-ac-92	OFF	F	Projector 2	COM1		OFF	F	(White text on red background)
Projector Name	Connection	MAC Address	Power	I																	
Projector 1	192.168.1.10:23	00-00-87-56-ac-92	OFF	F																	
Projector 2	COM1		OFF	F																	

The priority of colored label is; 1st Disconnect, 2nd Error and 3rd Warning.

6 Output Log

In order to enable logging status data, please enable log setting through [File] → [Log]. It does not record log data when it is unchecked.

Output folder : (PJman installed folder)\Log\

Filename :

TCP / IP network --- (IP address)_(Port No.).log (ex: 192.168.1.10_23.log)

Serial (RS232C) --- COMM_(Port No.).log (ex: COMM_1.log)

Format:

Command log

[Cmd], [Date], [Action code], [Operation ID], [Operation Name], [Setting Value], [Result], [Return Value]

Status log (only status is changed)

[Stat], [Date], [Status Name], [Status]

Example

[Stat], 2008/11/07 20:06:16, Power Status, ON

[Stat], 2008/11/07 20:06:16, Lamp Time, 0

[Stat], 2008/11/07 20:06:16, Filter Time, 0

[Stat], 2008/11/07 21:06:16, Lamp Time, 1

[Stat], 2008/11/07 21:06:16, Filter Time, 1

[Cmd], 2008/11/07 21:10:35, Set, 0x2000, Input Source, 1, OK, 0

[Cmd], 2008/11/07 21:15:27, Get, 0x6000, Power, 0, OK, 0

[Cmd], 2008/11/07 21:15:27, Set, 0x6000, Power, 0, OK, 0

[Stat], 2008/11/07 21:15:30, Error Status, Disconnect

7 Create Log Report

In order to create Log Report, choose a projector or group that you want to create Report from the tree view. And then, select [File] → [Log Report]. The following dialogue appears.

The dialog box titled "Log Report" contains the following fields:

- Period:**
 - Start: 2014 / 02 / 17
 - End: 2014 / 02 / 17
- Output Folder:** An empty text field with a browse button (three dots).
- Buttons:** OK and Cancel.

Period --- The reporting period.

Start : Start Date

End : End Date

Output folder --- Output folder

The Log Report will create in the output folder when OK button is pressed. The folder contains individual Log Report of each projector separately. The individual log life is provided as csv format with projector name ("projector name.csv")

The format of Log Report is shown below.

```

Projector Name: Projector 1
Model: CP-X265
Connection: 192.168.1.10:23 (00-00-87-16-2c-ae)
Period: 2008/04/01 - 2008/04/30

Use Information
[Date],[Power On Count],[Power Off Count],[Lamp Time],[Filter Time],[Error Count]
2008/04/01,5,5,145,145,0
2008/04/02,3,3,148,148,1
:
:
2008/04/30,1,1,193,193,0

Error Information
[Date], [Time], [Error Info]
2008/04/02,17:43:36,Disconnect
    
```

Item	Description	Note
Projector Name	Projector name	
Model	Model name	
Connection	Connection type	Serial (RS232C): COM Port number Network: IP Address:Portnumber (MAC address)
Period	Log data period	yyyy/mm/dd
Use Information	Usage information	
	Date	yyyy/mm/dd
	Power On Count	Sum of power status change from OFF to ON
	Power Off Count	Sum of power status change from ON to OFF
	Lamp Time	Lamp hours
	Filter Time	Filter hours
	Error Count	Sum of Error / Warnings
Error Information	Error Information	
	Date	Date of Error
	Time	Time of Error
	Error Info	Error type

8 Create Status Report

You can create the status report as HTML format. The report shows a current snapshot of projector status in a particular group, searched group or groups. In order to show the status report, select the group or projector. And then go to [File] → [Output Report] from the menu. The status report will be shown in the web browser.

Date: 2/17/2014 1:16:46 PM

All Projectors

Projector Name	Model	Connection	MAC Address	Power	Input	Status	Lamp Time	Filter Time	Total Run Time
Projector1	CP-X268A	192.168.1.10:23	00-00-87-f3-ab-01	ON	RGB1	Normal	346 h	1 h	347 h
Projector11	CP-X306	192.168.1.12:23	00-00-87-f2-ab-11	ON	Computer1	Normal	311 h	311 h	347 h
Projector12	CP-X306	192.168.1.13:23	00-00-87-f2-ab-12	ON	Computer1	Normal	346 h	1 h	347 h
Projector2	CP-X308	192.168.1.11:23	00-00-87-f2-ab-02	ON	Computer1	Normal	346 h	1 h	347 h
Projector21	CP-X1200	192.168.1.201:23	00-00-87-f3-cd-21	ON	M1-D	Normal	521 h	521 h	700 h
Projector22	CP-X1200	192.168.1.202:23	00-00-87-f3-cd-22	ON	M1-D	Normal	521 h	521 h	700 h
Projector31	CP-X445	192.168.1.14:23	00-00-87-f1-3b-31	ON	RGB1	Normal	521 h	441 h	500 h
Projector32	CP-X445	192.168.1.15:23	00-00-87-f1-3b-32	ON	RGB1	Normal	521 h	441 h	500 h
Projector41	CP-X1250	192.168.1.203:23	00-00-87-f3-dc-41	ON	RGB	Normal	5 h	5 h	100 h
Projector42	CP-X1250	192.168.1.204:23	00-00-87-f3-dc-42	ON	RGB	Normal	5 h	5 h	100 h
Projector51	CP-X608	192.168.1.205:23	00-00-87-f3-e1-51	ON	M1-D	Normal	1204 h	324 h	1500 h
Projector52	CP-X608	192.168.1.206:23	00-00-87-f3-e1-52	ON	M1-D	Normal	1204 h	324 h	1500 h
Projector61	CP-X807	192.168.1.221:23	00-00-87-f3-e2-61	ON	HDMI	Normal	0 h	0 h	100 h
Projector62	CP-X807	192.168.1.220:23	00-00-87-f3-e2-62	ON	HDMI	Normal	0 h	0 h	100 h
Projector71	CP-X809	192.168.1.253:23	00-00-87-f3-ef-71	ON	HDMI	Normal	125 h	125 h	300 h
Projector72	CP-X809	192.168.1.254:23	00-00-87-f3-ef-72	ON	HDMI	Normal	125 h	125 h	300 h

The status report will be given by group as shown below.

Date: 2/17/2014 1:14:12 PM

Projector/

Projector Name	Model	Connection	MAC Address	Power	Input	Status	Lamp Time	Filter Time	Total Run Time
Group1									
Projector1	CP-X268A	192.168.1.10:23	00-00-87-f3-ab-01	ON	RGB1	Normal	346 h	1 h	347 h
Projector2	CP-X308	192.168.1.11:23	00-00-87-f2-ab-02	ON	Computer1	Normal	346 h	1 h	347 h

Projector/Group1/

Projector Name	Model	Connection	MAC Address	Power	Input	Status	Lamp Time	Filter Time	Total Run Time
Group2									
Projector11	CP-X306	192.168.1.12:23	00-00-87-f2-ab-11	ON	Computer1	Normal	311 h	311 h	347 h
Projector12	CP-X306	192.168.1.13:23	00-00-87-f2-ab-12	ON	Computer1	Normal	346 h	1 h	347 h

Projector/Group1/Group2/

Projector Name	Model	Connection	MAC Address	Power	Input	Status	Lamp Time	Filter Time	Total Run Time
Projector21	CP-X1200	192.168.1.201:23	00-00-87-f3-cd-21	ON	M1-D	Normal	521 h	521 h	700 h
Projector22	CP-X1200	192.168.1.202:23	00-00-87-f3-cd-22	ON	M1-D	Normal	521 h	521 h	700 h
Projector31	CP-X445	192.168.1.14:23	00-00-87-f1-3b-31	ON	RGB1	Normal	521 h	441 h	500 h
Projector32	CP-X445	192.168.1.15:23	00-00-87-f1-3b-32	ON	RGB1	Normal	521 h	441 h	500 h
Projector41	CP-X1250	192.168.1.203:23	00-00-87-f3-dc-41	ON	RGB	Normal	5 h	5 h	100 h
Projector42	CP-X1250	192.168.1.204:23	00-00-87-f3-dc-42	ON	RGB	Normal	5 h	5 h	100 h
Projector51	CP-X608	192.168.1.205:23	00-00-87-f3-e1-51	ON	M1-D	Normal	1204 h	324 h	1500 h
Projector52	CP-X608	192.168.1.206:23	00-00-87-f3-e1-52	ON	M1-D	Normal	1204 h	324 h	1500 h
Projector61	CP-X807	192.168.1.221:23	00-00-87-f3-e2-61	ON	HDMI	Normal	0 h	0 h	100 h
Projector62	CP-X807	192.168.1.220:23	00-00-87-f3-e2-62	ON	HDMI	Normal	0 h	0 h	100 h
Projector71	CP-X809	192.168.1.253:23	00-00-87-f3-ef-71	ON	HDMI	Normal	125 h	125 h	300 h
Projector72	CP-X809	192.168.1.254:23	00-00-87-f3-ef-72	ON	HDMI	Normal	125 h	125 h	300 h