



Table of Contents

1. General Information	3
1.1 Main Features	3
1.2 For Your Safety	3
1.3 Unpacking.....	4
1.4 General Operation of the Imperial DS1	4
1.5 RCU	5
1.6 Front Panel	6
1.7 Rear Panel	6
2. Installation of Imperial DS1	7
2.1 Connecting to Antenna and TV.....	7
2.2 Connecting to TV/VCR using SCART Support	7
2.3 Connecting to TV using RCA Support	8
3. Menu Information	9
4. Antenna Setup	9
4.1 Antenna Setup Ę 1) DiSEqC 1.2	9
4.2 Antenna Setup Ę 2) Fixed	10
5. Channel Search	11
5.1 Channel SearchĘ 1) DiSEqC 1.2.....	11
5.2 Channel Search Ę 2) Fixed	12
6. Other Option	13
6.1 System Setting	13
6.2 Parental Lock	14
6.3 Time Adjust	15
6.4 Time Reservation	15
6.5 Factory Default.....	15
7. General Viewing Function	16
7.1 Select Channel	16
7.2 Previous Channel Recall	16
7.3 TV & Radio Mode.....	16
7.4 TV & VCR Mode.....	16

7.5 Channel Information	16
7.6 Volume & Audio Control.....	17
7.7 Position.....	17
7.8 Sat	17
7.9 Favourite List	17
8. Channel Manager	18
8.1 Channel Manager	18
8.2 Favorite Channel.....	18
8.3 Move Channel.....	19
8.4 Lock Channel	19
8.5 Rename Channel.....	19
8.6 Delete Channel	19
8.7 Sort Channel.....	20
9. EPG (Electronic Program Guide).....	20
10. Antenna Direction Help.....	21
11. Menu Tree of Imperial DS1	22
12. Trouble Shooting	23

Table of Figures, Charts and Tables

Figure 1: Remote Control Unit	5
Figure 2: Front Panel	6
Figure 3: Rear Panel.....	6

-

1.3 Unpacking

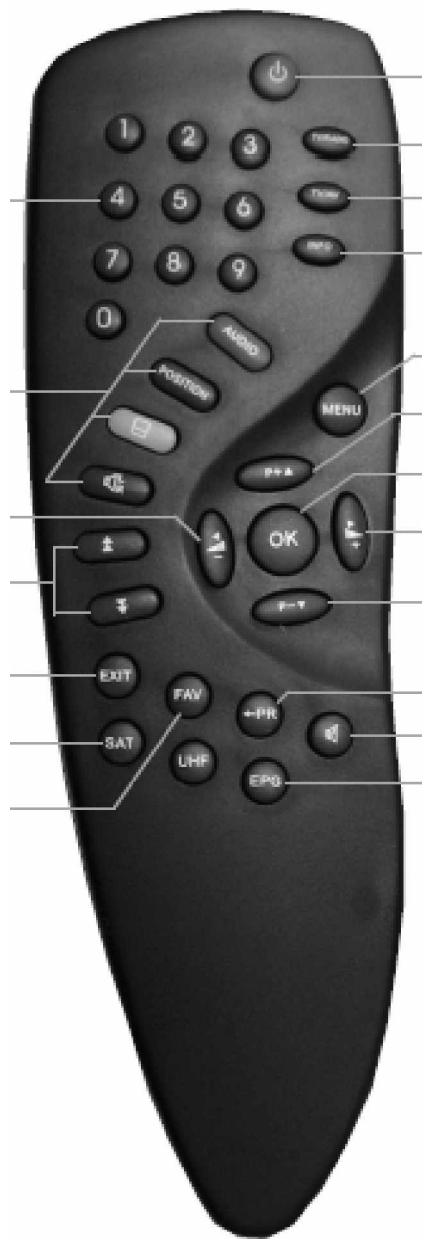
-

-

-

1.4 General Operation of the Imperial DS1

1.5 RCU



Key	Function
	Turns power ON/OFF of the DSR.
	When watching a channel, mutes the sound.
0~9	Enter number of the required menu item or select a channel number to watch.
TV/RADIO	Switch between TV and Radio mode.
←PR	Switches back to previous channel.
FAV	Display the favorite channel list.
INFO	Shows information of the current channel.
MENU	Press this key one time to run menu on screen, and call command box.
	Moves up/down a page in the channel list.
OK, LIST	Executes the selected item in the menu screen, or enters the desired value in any input mode
SAT	Display the satellite list or searched channel..
PR+,PR-	When watching a channel, change channels, or moves to the next higher or lower item in the menu.
	When watching a channel, adjust the volume, or move to the left or right item in menu.
EXIT	Returns to the previous menu on the menu screen or escape from the menu.
AUDIO	When watching a channel, switches the audio languages.
EPG	Calls up the EPG (Electronic Program Guide).
	Selects the different audio modes.
TV/AV	Switches between TV or AV mode.
Position	Display position bar on the screen to adjust the antenna or for manual search.
	Switches to teletext or subtitle mode.
UHF	Switches to UHF tuning mode.

Figure 1: Remote Control Unit

1.6 Front Panel



Figure 2: Front Panel

KEY	FUNCTOIN
⏻	
CH /	

1.7 Rear Panel

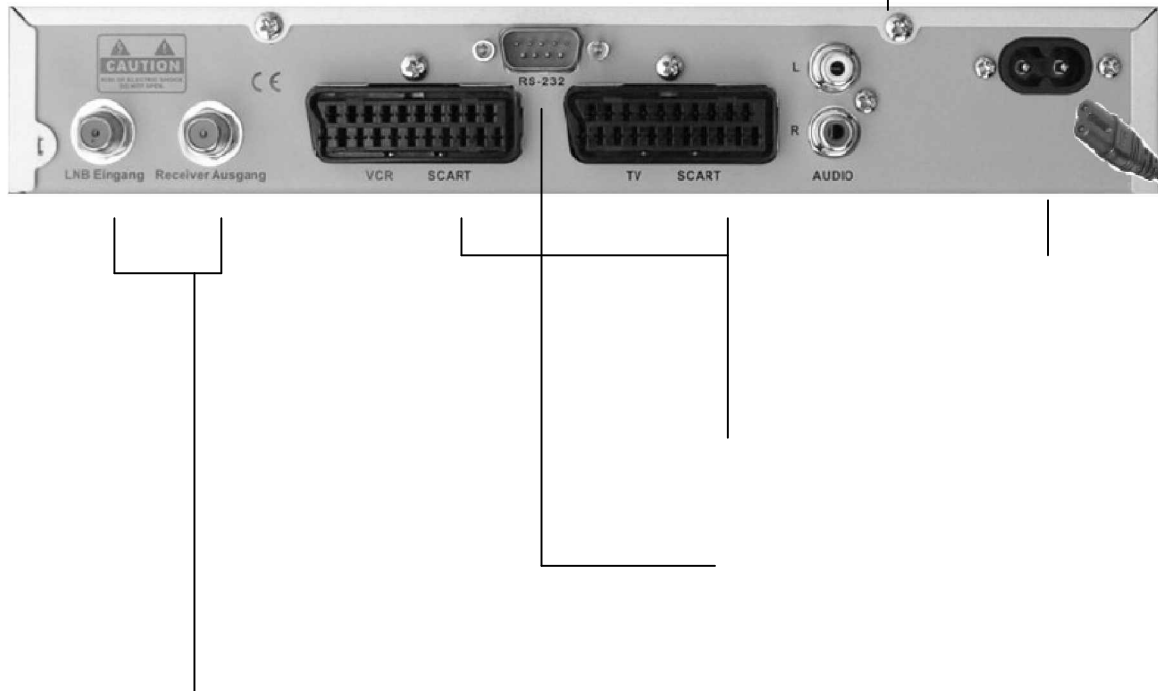
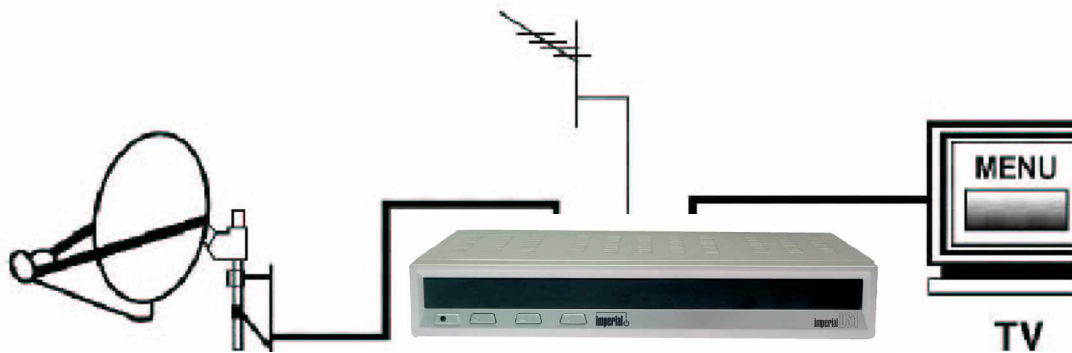


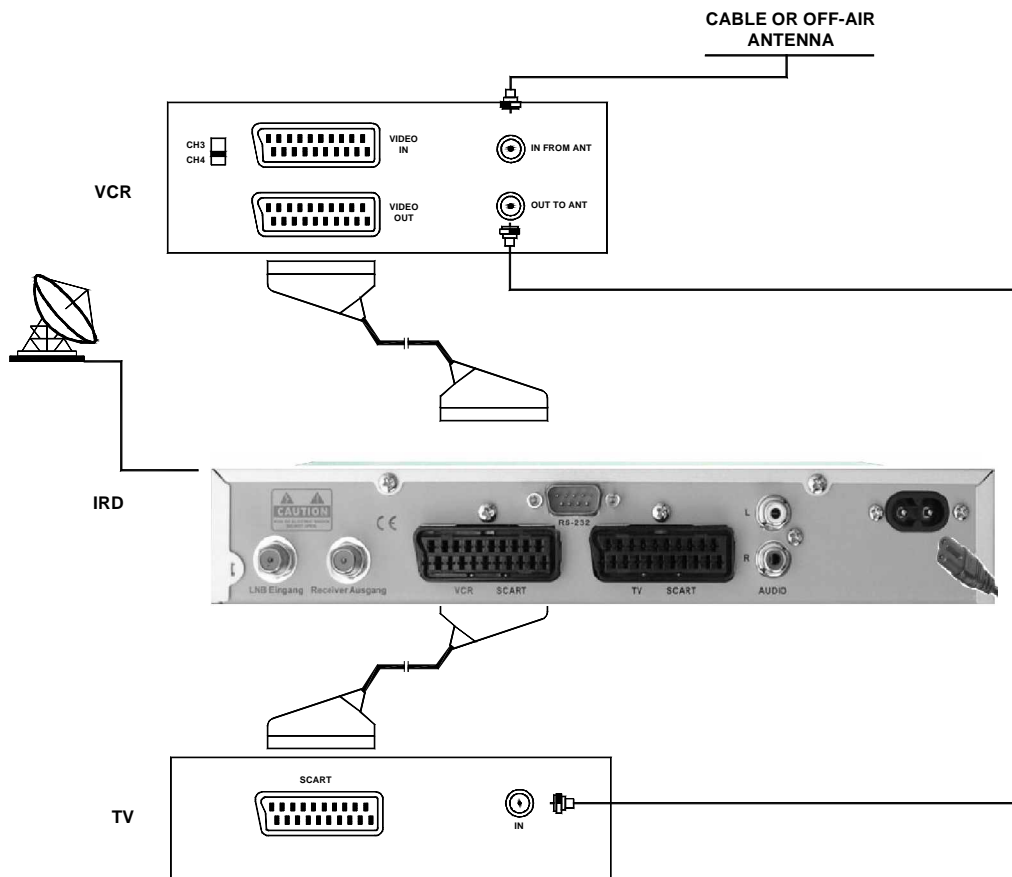
Figure 3: Rear Panel

2. Installation of Imperial DS1

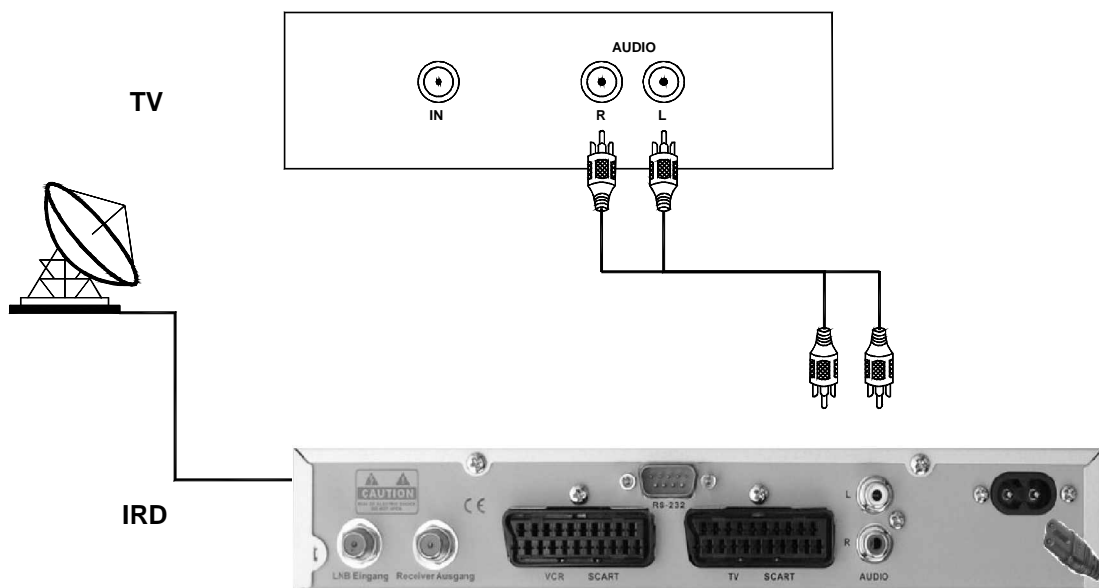
2.1 Connecting to Antenna and TV



2.2 Connecting to TV/VCR using SCART Support

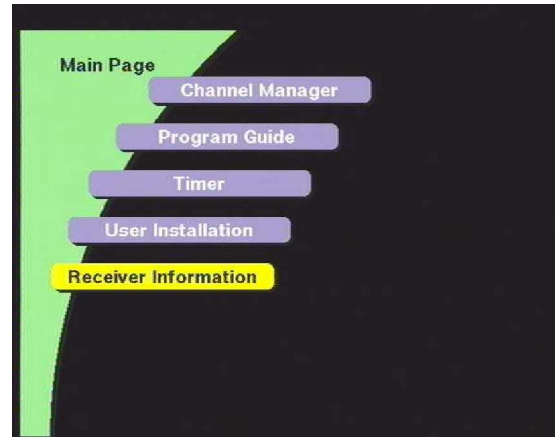


2.3 Connecting to TV using RCA Support



3. Menu Information

-
-
-
-
-
-



OK



PR+, PR-



EXIT

4. Antenna Setup

4.1 Antenna Setup È 1) DiSEqC 1.2

1. Antenna
2. Type
3. Satellite
4. LNB Type
5. LNB Freq

OK

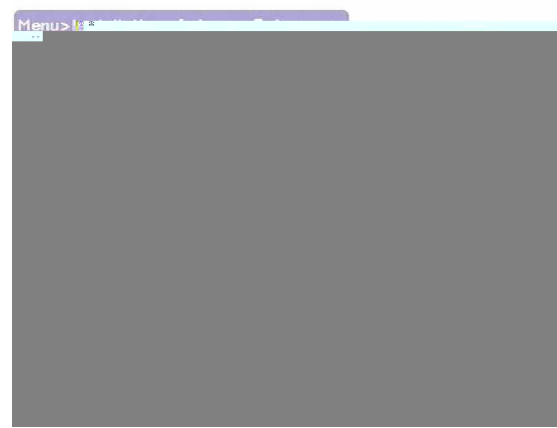


6. Switches (22KHz Tone, DiSEqC)

7. C/Ku band control

4.1.1 East West Limit

Limit Setup
E Limit
Setup
Limit Setup
OK
OK
OK

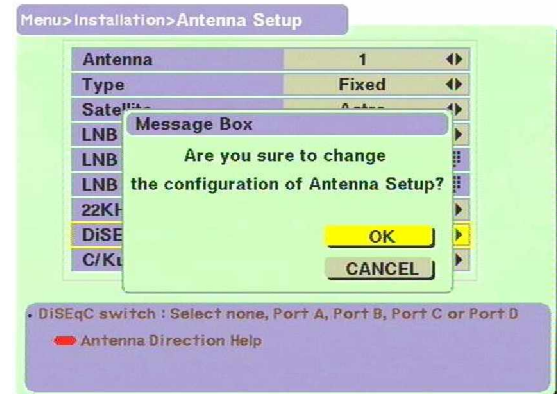


4.1.2 Reset DiSEqC limit

OK
EXIT
OK
OK
OK

4.2 Antenna Setup 2) Fixed

1. Antenna
2. Type
3. Satellite
4. LNB Type
5. LNB Freq



6. Switches (22KHz Tone, DiSEqC)

7. C/Ku band control

OK

5. Channel Search

5.1 Channel Search 1) DiSEqC 1.2

1. Antenna

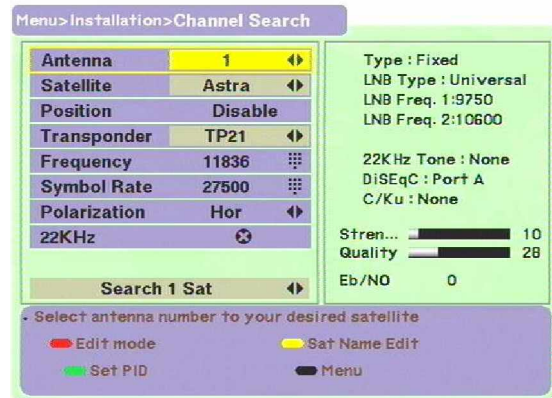
2. Satellite



OK

Edit Mode

Edit mode



3. Position
W

E

OK

4. Transponder



OK

5. Frequency & Symbol Rate

6. Polarization

7. 22KHz

Search 1 Sat

- Search 1 SAT

- Search TP

- Search Network

- Search all SAT

Searched

COMPLETE

OK

9. Set PID:

OK

OK



10. Sat name edit:

TP :

Delete

Delete TP

MENU

12. Re-Sync

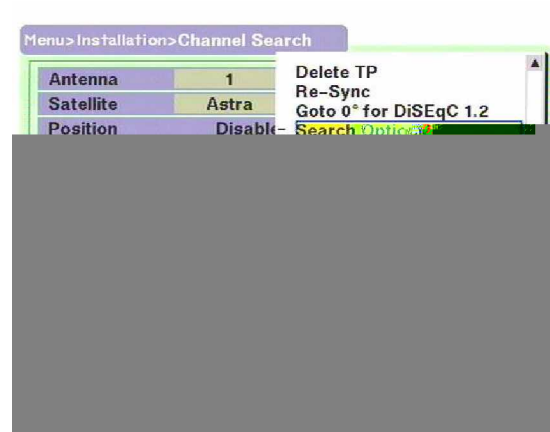
13. Go to 0° for DiSEqC 1.2

14. Search Option

-
-
-

Sort by Scramble

not searched TP only



5.2 Channel Search 2) Fixed

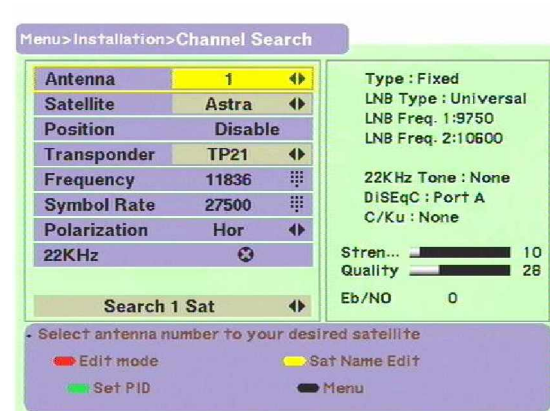
1. Antenna

2. Satellite

OK

Edit Mode

EDIT mode



6. Other Option

-
-
-
-
-



6.1 System Setting

System Setting

1. OSD Language

2. Audio Language

3. LNB power

YES

Loop Through

OFF

4. Video output

5. Display Info Bar

6. Start On Channel

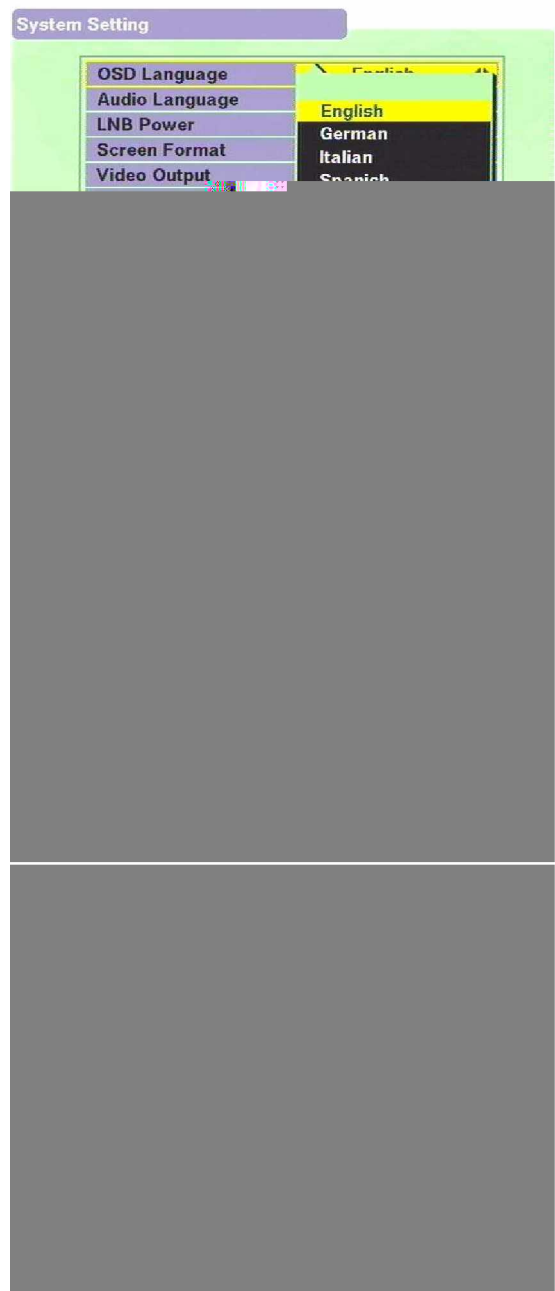
OK

7. UHF Standard

8. UHF Channel

Note

6 7



6.2 Parental Lock

Install Lock

-
- 1. ON
- 2.
- 3.

Note

Warning

-
- 1.
- 2.
- 3.
- 4. 

-
- 1. ON
- 2.
- 3.
- 4.
- 5.
- 6. OK
- 7. Enter Password

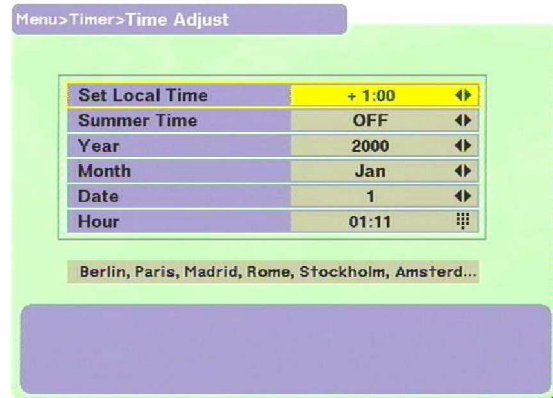
- 8.

Note

Warning



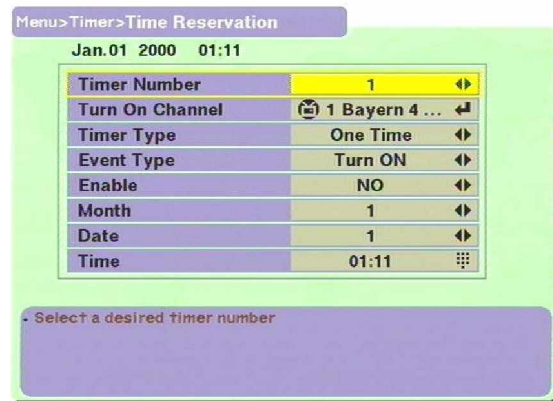
6.3 Time Adjust



6.4 Time Reservation

Turn Off the time

Turn on time



6.5 Factory Default

OK

OK

Warning



7. General Viewing Function

INFO

7.1 Select Channel

PR+, PR- CH

OK

EXIT

OK



7.2 Previous Channel Recall

←PR

7.3 TV & Radio Mode

TV/RADIO

TV & VCR Mode

TV/AV

7.5 Channel Information

INFO

Note

7.6 Volume & Audio Control

1.

VOL<>



Note



2.



3.



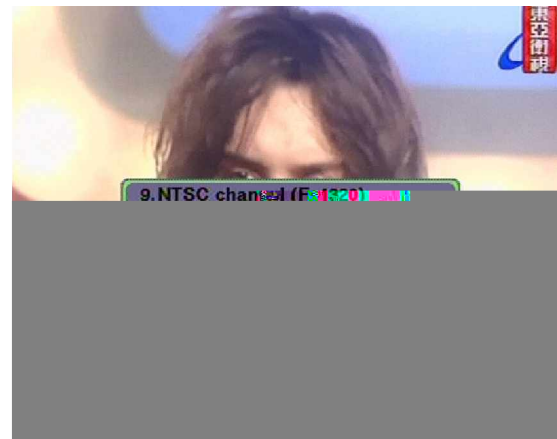
4.

AUDIO

7.7 Position

POSITION

E W



7.8 Sat

SAT

OK

7.9 Favourite List

FAV

FAV



8. Channel Manager

8.1 Channel Manager

Note

1. Delete mode (Red key)
2. Favorite mode (Green key)
3. Move mode (Yellow key)
4. Lock mode (Blue key)

1. Rename Favorite group
2. Rename
3. Sort

8.2 Favorite Channel

☺

OK

☺

OK

EXIT

FAV

- ☺
- How to make a favorite group
 - 1.
 - 2.



- How to edit the name of a Favorite group

1. MENU

2. Rename Favorite group

3.



8.3 Move Channel

Move

OK

OK

8.4 Lock Channel

Lock

Lock

OK



Note:



8.5 Rename Channel

MENU

OK



8.6 Delete Channel

Delete

OK

EXIT

OK

ÍLÎ

Warning

8.7 Sort Channel

MENU

Sort

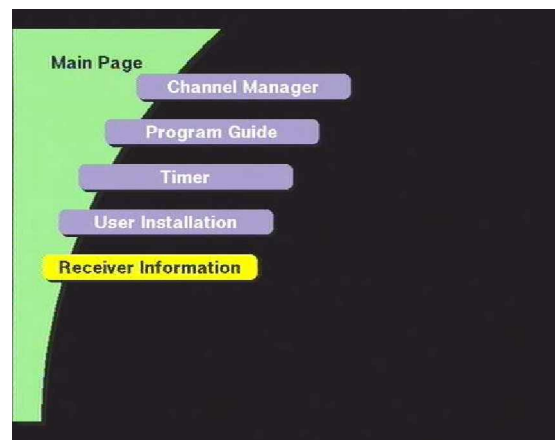
OK

Note:

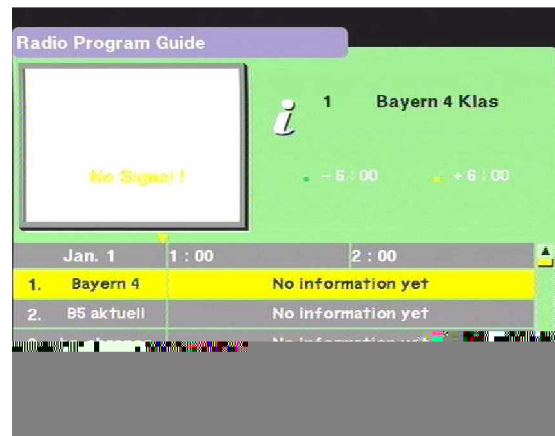
9. EPG (Electronic Program Guide)

EPG

EPG

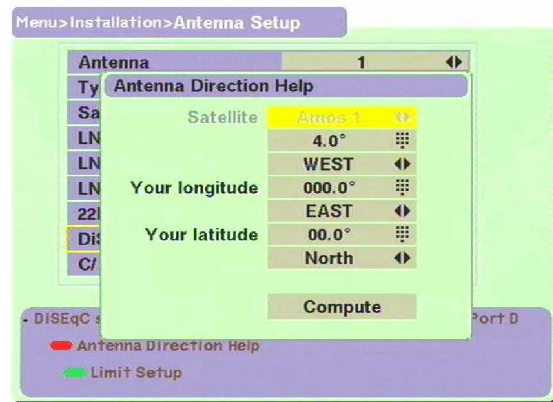


Detail

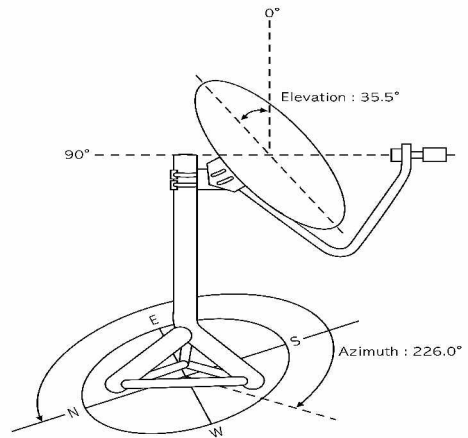


Note

10. Antenna Direction Help



OK

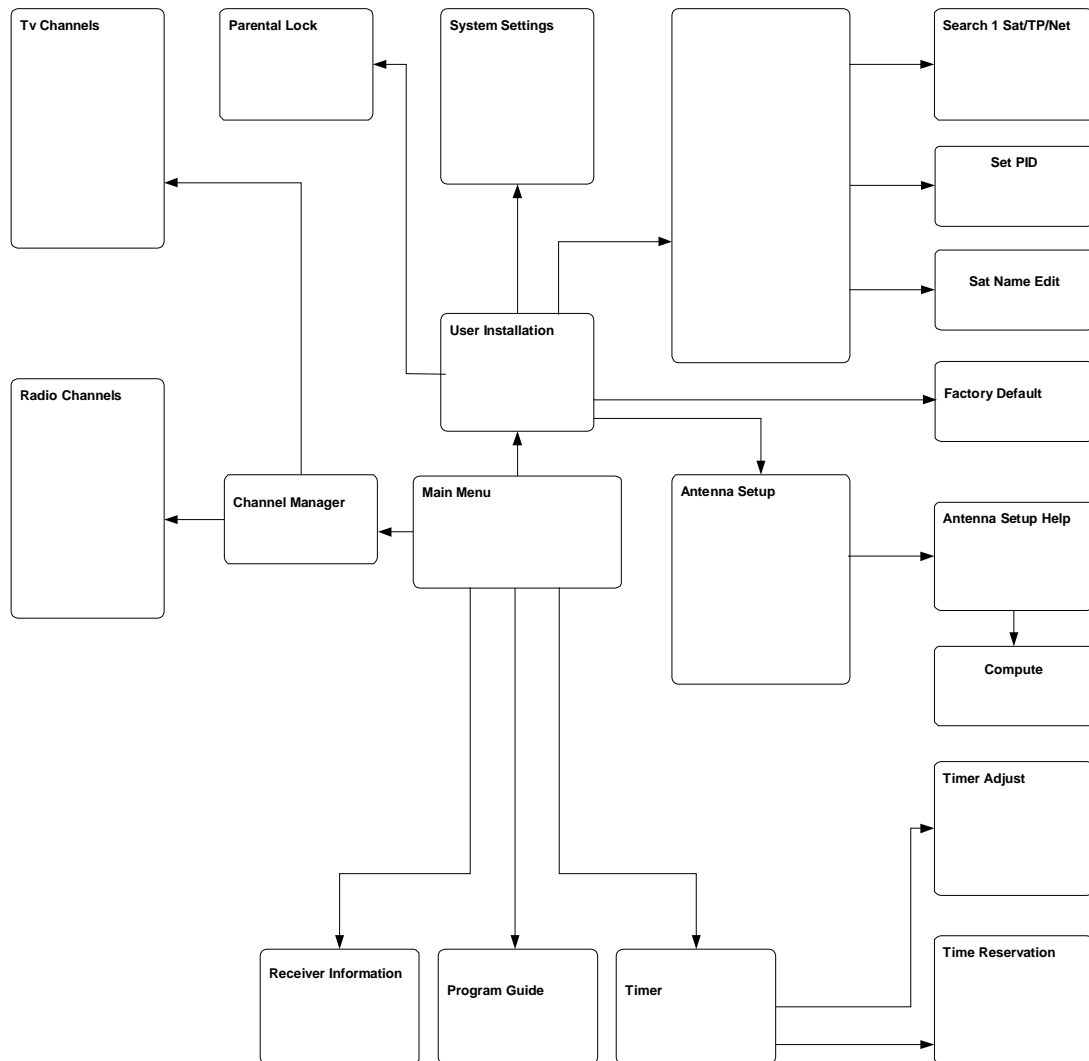


11. Menu Tree of Imperial DS1

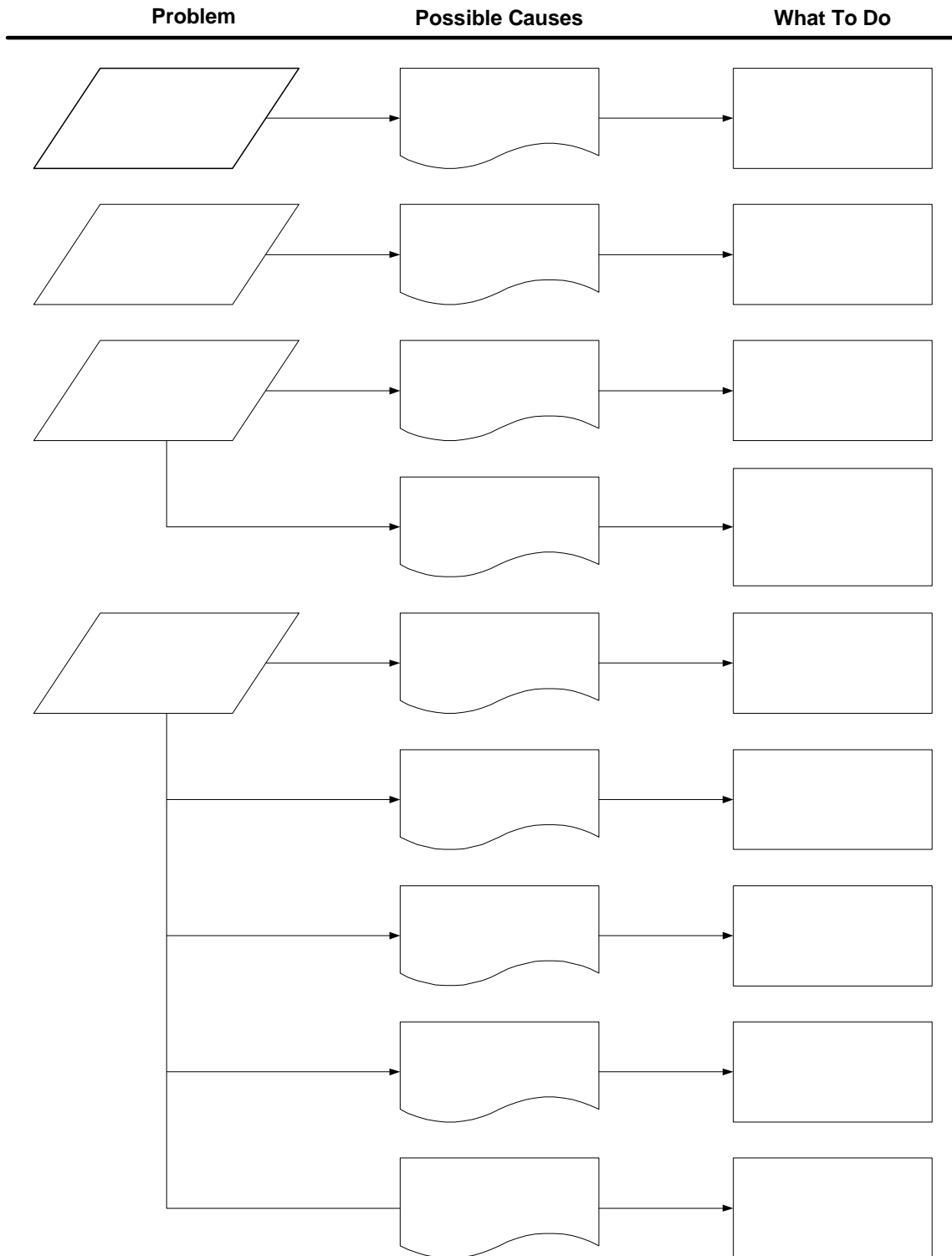
First Time Installation

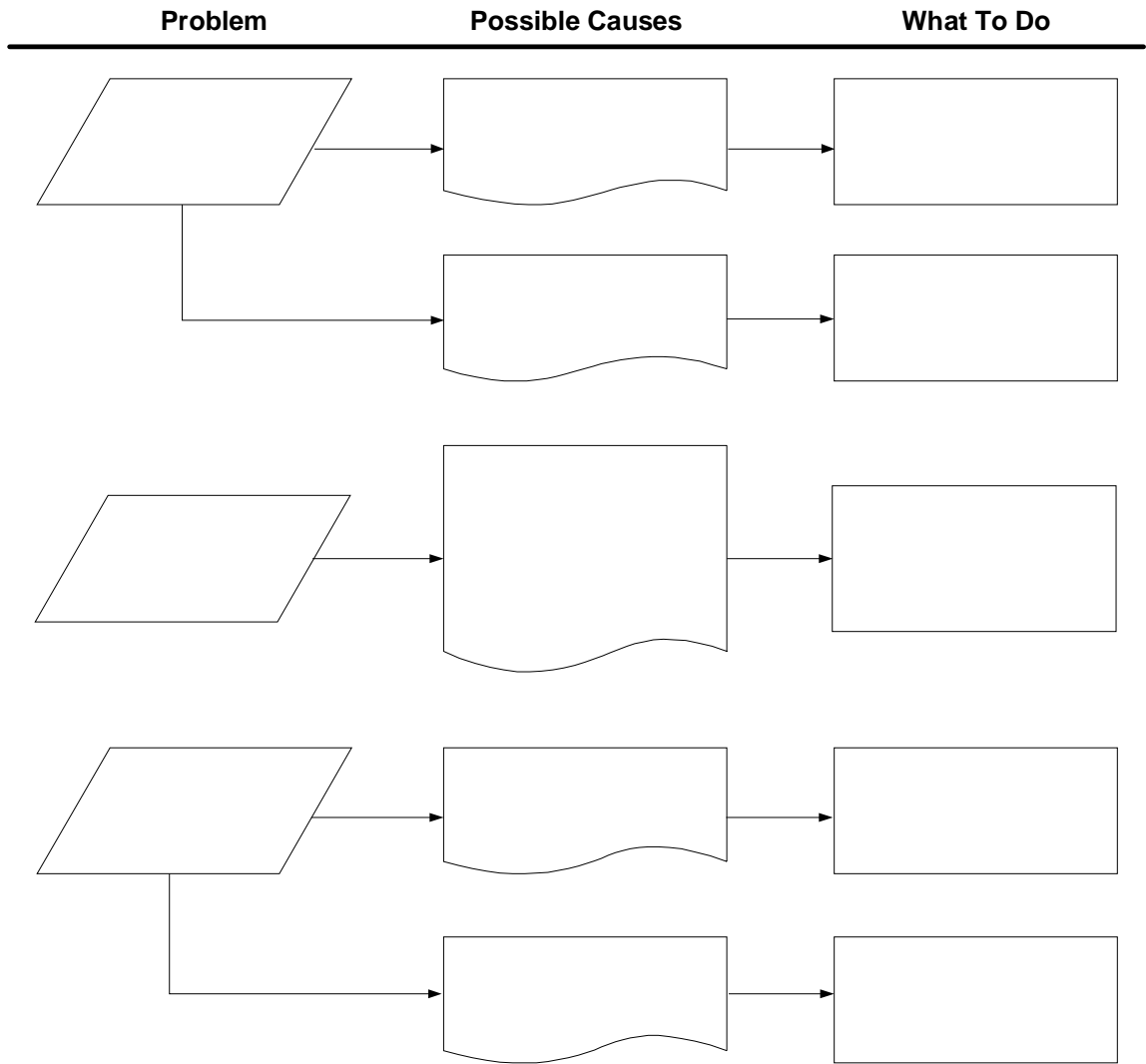


Menu Navigation



12. Trouble Shooting





Note: