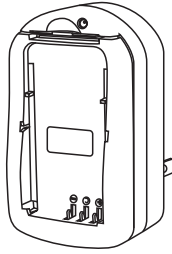




CH-3450/CAN

Universal Digital Camera Travel Charger

User's Manual



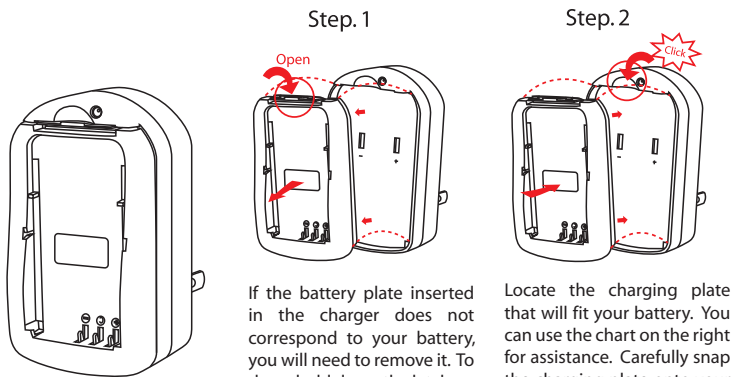
Welcome

Thank you for purchasing the CH-3450/CAN universal digital camera travel charger. You can use this charger anywhere in the world to charge your Canon digital camera and camcorder batteries. With its rapid charging speeds, and easy to understand LED charging indicator, you will find that this charger is a quick and simple solution to all of your charging needs.

Specifications

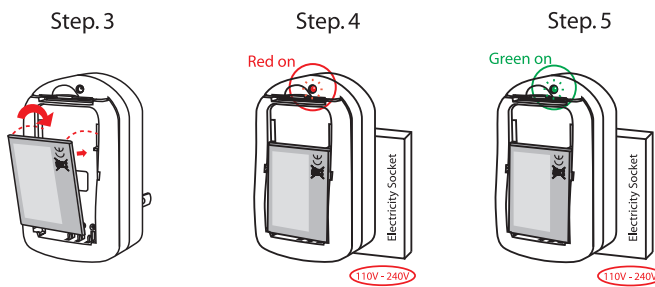
Item Number: CH-3450/CAN
 Input: 100-250V AC 50/60HZ * 12V DC
 Output: 4.2V===500M
 8.4V===500MA

Using Your CH-3450/CAN Charger



Step 1
 If the battery plate inserted in the charger does not correspond to your battery, you will need to remove it. To do so, hold down the latch on the battery plate, and pull it away from the charger.

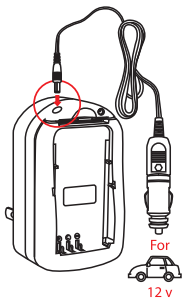
Step 2
 Locate the charging plate that will fit your battery. You can use the chart on the right for assistance. Carefully snap the charging plate onto your charger.



Step 3
 Slide your battery onto the charger. Be sure to match up the contact pins on the battery to the corresponding markings on your battery plate. The battery should slide firmly into place.

Step 4
 Plug your charger into an available electricity socket. When it is plugged in with a battery inserted, a red light will turn on to indicate the battery is charging.

Step 5
 When your battery is fully charged, the light on the charger will turn green.



Use the DC car cable to connect to one of your car's DC power outlets if you would like to charge your battery while you are on the road.

Finding the Correct Plate For your Canon Battery
 In order to see which plate is suitable for your Canon battery, please refer to the chart below:

<i>Use plate</i>
NB1L, NB3L(KLB4)
<i>For Charging below batteries</i>
Canon NB1L, NB3L

<i>Use plate</i>
BP511, BP512, NB2L
<i>For Charging below batteries</i>
Canon BP-508, BP-511, BP-512, BP-522, BP-535, NB-2L, BP-2L12, BP-2L14

<i>Use plate</i>
FC-CAN915, 930, 945
<i>For Charging below batteries</i>
Canon BP-915, BP-924, BP-927, BP-930, BP-941, BP-945, BP-970

<i>Use plate</i>
NB4L, NB5L, BP208, BP308, BP315
<i>For Charging below batteries</i>
Canon NB4L, NB5L, BP-208, BP-308, BP-315

Important Safety Instructions:

1. For indoor use only. Do not expose charger to rain, snow, or excessive moisture.
2. Never use an extension cord or any attachments not provided with this unit. This may result in a risk of fire or electric shock.
3. Do not operate the charger if it has been subjected to shock.
4. Do not disassemble the charger. Incorrect reassembly may result in shock or fire. For service, please contact the manufacturer of this device or a trained professional.
5. Always unplug the charger before attempting maintenance or cleaning.
6. Never alter the plug provided. Improper connection can result in shock or fire.
7. This charger is not intended for use by young children or infirm persons without supervision.
8. Never use as a power source.

Sakar Warranty Card

This warranty covers the original consumer purchaser only and is not transferable. Products that fail to function properly UNDER NORMAL USAGE, due to defects in material or workmanship, will be repaired at no charge for parts or labor for a period of one year.

What Is Not Covered By Warranty:

Damages or malfunctions not resulting from defects in material or workmanship and damages or malfunctions from other than normal use, including but limited to, repair by unauthorized parties, tampering, modification or accident.

What To Do When Service Is Required:

When returning your defective product (postage pre-paid) for service, your package should include:

1. Copy of original bill of sale
2. A detailed written description of the problem.
3. Your return address and telephone number (Daytime)

MAIL TO ADDRESS BELOW:

Sakar International
 Attention: Service Department
 195 Carter Drive
 Edison, NJ 08817

You may also visit www.sakar.com for further assistance if necessary or call our tech support department toll free at (877) 397-8200.