

WL 1000
User Manual

Disclaimer

Eurotech reserves the right to make changes in specifications and other information contained within this document without prior notice, and the reader should in all cases consult Eurotech to determine whether any such changes have been made. The information in this publication does not represent a commitment on the part of Eurotech.

Eurotech shall not be liable for technical or editorial errors or omissions contained herein; nor for incidental or consequential damages resulting from the furnishing, performance, or use of this material.

This document contains proprietary information that is protected by copyright. All rights are reserved. No part of this document may be photocopied, reproduced, or translated into another language without the prior written consent of Eurotech.

© 2006 Eurotech - All rights reserved.

Rev. 1.0, December 2006; ETH_ZYPADWL1000_USM10_2006-12

Websites: www.eurotech.com - www.belsati.com
www.zypad.com



Trademarks

Zypad is a registered trademark of Eurotech S.p.A.

All other names or product names mentioned in this manual are the properties of their respective companies and are hereby acknowledged.

Conventions

The following table lists conventions that are used throughout this guide.

Icon	Notice Type	Description
	Information note	Important features or instructions
	Warning	Information to alert you to potential damage to a program, system or device or potential personal injury

Contents

Disclaimer	2
Trademarks	2
Conventions	2
Contents	3
Chapter 1 Introduction.....	5
Regulatory and Safety Approvals.....	5
Important information to the user	7
<i>Safety Notices and warnings</i>	7
<i>RAEE</i>	9
<i>RoHS</i>	9
Limited Warranty	11
Eurotech Software License Agreement.....	12
Software Limited Warranty	13
Chapter 2 Product overview.....	15
<i>Ergonomics</i>	15
<i>Rugged Design</i>	15
<i>Highlights</i>	15
<i>Features</i>	16
<i>Accessories</i>	16
The I/O interfaces and the Reset button	19
<i>The Stereo Port</i>	19
<i>The USB Host port</i>	19
<i>The Mini-SD connector</i>	19
<i>The USB Device port</i>	19
<i>The Reset button</i>	19
Power management	20
<i>Turning the device on and off</i>	20
<i>Resetting the Device</i>	20
<i>Detection of the User Arm Position (the Energy Saving Device)</i>	21
<i>Suspending the Device</i>	21
The Keypad	22
The Stylus	23
Navigating the Display	25
<i>The TaskBar</i>	25
<i>The Command Bar</i>	26
The Input Panel.....	27
Chapter 3 The Control Panel.....	29
Introduction	29
Knowing the icons and their functions.....	30
<i>Bluetooth Device Properties</i>	30
<i>Certificates</i>	30
<i>Date/Time</i>	30

<i>Dialing Properties</i>	30
<i>Display Properties</i>	30
<i>Input Panel</i>	31
<i>Internet Options</i>	31
<i>Keyboard</i>	31
<i>Mouse</i>	31
<i>Network and Dial-up Connections</i>	31
<i>Owner</i>	31
<i>Password</i>	32
<i>PC Connection</i>	32
<i>Power</i>	32
<i>Regional Settings</i>	33
<i>Remove Programs</i>	33
<i>StartUp Manager</i>	33
<i>Storage Manager</i>	33
<i>Stylus</i>	33
<i>System</i>	33
<i>Terminal Server Client Licenses</i>	34
<i>Volume & Sounds Properties</i>	34
<i>Zetup (Zypad Setup)</i>	35
Chapter 4 Synchronization	37
Installing & Using Microsoft ActiveSync	37
<i>Installing Microsoft ActiveSync on the Host PC</i>	37
<i>Setting up a Partnership</i>	37
<i>Transferring Files</i>	37
Chapter 5 Getting Connected	39
Configuring Bluetooth for WPAN e WWAN networking	39
<i>How to insert a Bluetooth device</i>	39
<i>How to remove a Bluetooth device</i>	40
<i>How to Configure Bluetooth for acceding to WWAN networks</i>	40
Starting a Wireless Network Connection (WLAN networking)	43
<i>How to start the Connection</i>	43
Starting a WAN connection	45
Chapter 6 Software programs	47
<i>Getting Satellite Signals, The GPSView Program</i>	48
<i>Starting the GPSView Program</i>	48

Chapter 1 Introduction

Congratulations on purchasing the Zypad WL1000 Wrist Wearable Personal Computer!
You have made a wise choice in selecting the Zypad WL1000, a reliable and intelligent device that will become your personal assistant whatever you do and wherever you go.
Please read the following paragraphs carefully:

Regulatory and Safety Approvals

EN 50371:2002

Generic standard to demonstrate the compliance of low power electronic and electrical apparatus with the basic restrictions relating to human exposure to electromagnetic fields (10MHz ~ 300GHz) – general public.

This product is marked **CE0051!** in accordance with the Class 2 product requirements specified in the R&TTE Directive, 1999/5/EC.

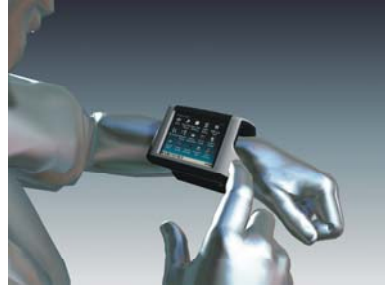
The CE Mark on the product indicates that the system has been tested and conforms to the provisions of the 89/336/EEC Electromagnetic Compatibility Directive and the 73/23/EEC Low Voltage Directive.

For further information, please contact:

Eurotech S.p.A.
A member of the Eurotech Group
Via Fratelli Solari, 3/a
33020 AMARO (Udine)
ITALY

Eurotech shall not be liable for use of our products with equipment (i.e., power supplies, personal computers, etc.) that are not CE marked and do not comply with the Low Voltage Directive.

The equipment is designed as a Wrist-worn Wearable Personal Computer.



This equipment may be operated in:				AT	BE
CY	CZ	DK	EE	FI	FR
DE	GR	HU	IE	IT	LV
LT	LU	MT	NL	PL	PT
SK	SI	ES	SE	GB	IS
LI	NO	CH	BG	RO	TR

Important information to the user

This part contains information relevant to safety and environment protection, written in the languages of the Countries where the product is distributed.

Before proceeding to the start guide, please carefully read the following paragraphs:

SAFETY NOTICES AND WARNINGS

FCC information and compliance

The Zypad WL1000 has been tested and found to comply with the limits of a Class B digital device pursuant to Part 15 of the FCC Rules. These limits are designed to provide reasonable protection against harmful interference. The Zypad WL1000 generates, uses, and can radiate radio frequency energy and, if not installed and used in accordance with the instructions, may cause harmful interference to radio communications or to devices that are not appropriately shielded.

Eurotech is not responsible for any radio or device, which may be affected by harmful interference. Appropriate shielding of susceptible devices is not the responsibility of Eurotech. Further, Eurotech is not responsible for unauthorized modifications of Eurotech equipment including the substitution or attachment of cables and/or other unauthorized equipment.

If electrical interference is harmfully affecting a device, it is the responsibility of the user to correct this interference.

In order to minimize the affects of electrical interference, use only shielded data cables with the Zypad WL1000 system.

In accordance with FCC 15.21, changes or modifications not expressly approved by the party responsible for compliance could void the user's authority to operate the equipment.

Tested to Comply with FCC Standards for Home or Office Use

The Zypad WL1000 has been tested and found to comply with part 15 of the FCC rules. Operation is subject to the following two conditions:

1. This device may not cause harmful interference.
2. This device must accept any interference received, including interference that may cause undesired operation.

The FCC ID is: UKIZYPADWL1000.

The Zypad WL1000 integrates the following modules that have the following FCC IDs:

- WLAN module FCC ID: NKRDRCM
- Bluetooth module FCC ID: POOWML-C29XX

Emissions information for Canada

This Class B digital apparatus complies with Canadian ICES-003. Cet appareil numérique de la classe B est conforme à la norme NMB-003 du Canada.

Use with care

Do not use your Zypad WL1000 whilst driving a vehicle. If you must use your Zypad WL1000, park the vehicle first. Always secure your Zypad WL1000 while driving; do not place your Zypad WL1000 on the passenger seat or where it can break loose in a collision or sudden stop. For vehicles equipped with an airbag, remember that an airbag inflates with great force. Do not place your Zypad WL1000 in the area over the airbag or in the airbag deployment area.

Use of the Zypad WL1000 device for navigation (using the optional car holder) still means that you need to drive with due care and attention.

Battery**WARNING:**

IF BATTERY IS INCORRECTLY REPLACED, THERE MAY BE A DANGER OF EXPLOSION. REPLACE ONLY WITH THE SAME OR EQUIVALENT TYPE RECOMMENDED BY THE MANUFACTURER. DISPOSE OF USED BATTERIES ACCORDING TO THE MANUFACTURER'S INSTRUCTIONS.

USE ONLY THE LI-ION BATTERY PACK PROVIDED BY EUROTECH. The use of any other battery pack not sold/manufactured by Eurotech in the Zypad WL1000 will void your warranty and may result in damage to the Zypad WL1000 wearable computer.

BATTERY PRODUCT SAFETY

THE LITHIUM-ION BATTERY PACK CONTAINED IN THE PRODUCT MUST BE RECYCLED OR DISPOSED OF CORRECTLY.

USE ONLY THE AC ADAPTER THAT IS PROVIDED / RECOMMENDED BY EUROTECH.

LITHIUM-ION BATTERY PACKS MAY GET HOT, IGNITE, EXPLODE AND / OR CAUSE SERIOUS INJURY IF USED IN AN INAPPROPRIATE WAY, PLEASE FOLLOW THESE SAFETY WARNINGS:

- Do not place the battery pack in fire or heat the battery in any way.
- Do not reverse the polarity of the battery pack.
- Do not short the terminals of the battery pack.
- Do not carry or store battery pack together with metal objects.
- Do not pierce the battery pack with nails, strike the battery pack with a hammer, step on the battery pack or in any way expose it to strong impacts or shocks.
- Do not solder directly onto the battery pack.
- Do not expose battery pack to liquid, or allow the battery contacts to get wet.

- Do not disassemble or modify the battery pack: The battery pack contains safety and protection devices, which, if damaged, may cause the battery pack to generate heat, ignite or explode.
- Do not discharge the battery pack using any device except for the specified device. When it is used in devices other than the specified devices, the battery pack can be damaged or its life expectancy reduced. If the device causes any abnormal current to flow, it may cause the battery pack to become hot, ignite or explode and may cause serious injury.
- In the event that the battery pack leaks and the fluid gets into your eyes, do not rub the eye. Rinse well with water and immediately seek medical attention. If left untreated, the battery fluid may cause permanent damage to the eyes.
- To avoid damaging your Zypad WL1000 or the AC Adapter users should insure that all connectors are properly aligned before connecting them.

RAEE

The information below is issued in compliance with the regulations as set out by the 2002/96/CE directive, subsequently superseded by 2003/108/CE; they refer to electrical and electronic equipment and the waste management of these products (WEEE).

When disposing of a device, including all of its components, subassemblies and materials that are an integral part of the product, you should take into consideration the WEEE directive.



This symbol has been attached to the equipment or, in the case that this is not possible, on the packaging, instruction literature and / or the guarantee sheet. By using this symbol, it states that the device has been marketed after August 13th 2005, and implies that when possible you must separate all of its components and dispose of them in accordance with local waste disposal legislations.

- Because of the substances present in the equipment, improper use or disposal of the refuse can cause damage to human health and to the environment.
- With reference to RAEE, it is compulsory not to dispose of the equipment with normal urban refuse; arrangements should be instigated for separate collection and disposal.
- Please contact your local waste collection body for further information regarding recycling of RAEE.
- In case of illicit disposal, sanctions will be levied on transgressors.

ROHS

This device, including all components, subassemblies and consumable materials that are an integral part of the product, has been manufactured in compliance with the European directive 2002/95/EC, known as the RoHS directive (Restrictions on the use of certain Hazardous Substances), this directive targets the reduction of certain hazardous substances previously used in electrical and electronic equipment (EEE).

(This page is intentionally left blank.)

Limited Warranty

Eurotech warrants its products to be free from defects in materials and workmanship and to conform to Eurotech's published specifications applicable to the products purchased at the time of shipment. This warranty does not cover any Eurotech product, which is:

- (i) Improperly installed or used.
- (ii) Damaged by accident or negligence, this includes failure to follow the appropriate maintenance, service and cleaning schedules.
- (iii) Damaged as a result of:
 - a. Modification or alteration by the purchaser or other party.
 - b. Excessive voltage or current being supplied to or drawn from any interface connections
 - c. Static electricity or electro-static discharge.
 - d. Operation under conditions beyond the specified operating parameters.
 - e. Repair or service of the product by anyone other than Eurotech or its authorized representatives.

Should this WL1000 be malfunctioning, please contact your original dealer providing information about the product name, the serial number, and the details about the problem.

EXCEPT AS MAY BE OTHERWISE PROVIDED BY APPLICABLE LAW, THE FOREGOING WARRANTY IS IN LIEU OF ALL OTHER COVENANTS OR WARRANTIES, EITHER EXPRESSED OR IMPLIED, ORAL OR WRITTEN, INCLUDING, WITHOUT LIMITATION, ANY IMPLIED WARRANTIES OF MERCHANTABILITY OR FITNESS FOR A PARTICULAR PURPOSE. EUROTECH' RESPONSIBILITY AND PURCHASER'S EXCLUSIVE REMEDY UNDER THIS WARRANTY IS LIMITED TO THE REPAIR OR REPLACEMENT OF THE DEFECTIVE PRODUCT. IN NO EVENT SHALL EUROTECH BE LIABLE FOR INDIRECT, INCIDENTAL, OR CONSEQUENTIAL DAMAGES, AND, IN NO EVENT, SHALL ANY LIABILITY OF EUROTECH ARISING IN CONNECTION WITH ANY PRODUCT SOLD HEREUNDER (WHETHER SUCH LIABILITY ARISES FROM A CLAIM BASED ON CONTRACT, WARRANTY, TORT, OR OTHERWISE) EXCEED THE ACTUAL AMOUNT PAID TO EUROTECH FOR THE PRODUCT. THESE LIMITATIONS ON LIABILITY SHALL REMAIN IN FULL FORCE AND EFFECT EVEN WHEN EUROTECH MAY HAVE BEEN ADVISED OF THE POSSIBILITY OF SUCH INJURIES, LOSSES, OR DAMAGES. SOME STATES, PROVINCES, OR COUNTRIES DO NOT ALLOW THE EXCLUSION OR LIMITATIONS OF INCIDENTAL OR CONSEQUENTIAL DAMAGES, SO THE ABOVE LIMITATION OR EXCLUSION MAY NOT APPLY TO YOU.

All provisions of this Limited Warranty are separate and severable, which means that if any provision is held invalid and unenforceable, such determination shall not affect the validity of enforceability of the other provisions hereof.

Use of any peripheral with the Zypad WL1000 terminal not manufactured, sold or recommended by Eurotech may void the warranty. This includes but is not limited to: cables, power supplies.

Eurotech extends these warranties only to the first end-user of the products. These warranties are non transferable.

Eurotech Software License Agreement

THE CUSTOMER MUST READ THIS DOCUMENT CAREFULLY. THE USE OF THE SOFTWARE DEVELOPED BY EUROTECH IMPLIES COMPLETE AND UNCONDITIONAL ACCEPTANCE OF THE TERMS AND CONDITIONS OF THIS AGREEMENT.

OWNERSHIP:

The EUROTECH SOFTWARE (within the limits of this agreement, this term refers to the information contained on the magnetic support, in the memory of the terminals used for data collection, the documentation provided for its use and all other related materials supplied to the CUSTOMER by EUROTECH or by third parties on behalf of the latter) in its original form, including all copies of the SOFTWARE made thereafter, are owned by EUROTECH or the suppliers of the latter. The CUSTOMER is not entitled to retain any title or right to or in the SOFTWARE, with the exception of the granting of the software license herein.

RIGHTS OF THE CUSTOMER:

With this agreement, EUROTECH grants to the CUSTOMER the right to use one copy of the specified version of the EUROTECH SOFTWARE on one computer, provided that, the Software is used on just one computer at a time. In cases in which the CUSTOMER has been authorised to use the SOFTWARE in a multi-user environment, the CUSTOMER may simultaneously use as many copies of the SOFTWARE as the number of usage authorisations received. The SOFTWARE is "in use" on a computer when it is loaded into the temporary memory (i.e., RAM) or installed into the permanent memory (e.g., hard disk or other storage device) of that computer. However, a copy installed on a network server solely for the purpose of distribution to other computers, is not "in use". If the number of users of the SOFTWARE can exceed the number of authorisations for use, the end CUSTOMER must have a mechanism or process that is capable of ensuring that the number of persons utilising the SOFTWARE simultaneously does not exceed the number of authorisations received.

CUSTOMER PROTECTION:

EUROTECH'S entire responsibility and the CUSTOMER'S exclusive remedies shall be, at EUROTECH'S discretion:

- (a) The return of the purchase price paid
- (b) Replacement of the SOFTWARE, as long as it is returned to EUROTECH with a copy of the purchase invoice.

This Warranty is void if the defect of the SOFTWARE is the result of unsuitable use or misapplication. Any replacement SOFTWARE will be warranted for the remainder of the original warranty period or 30 days whichever is longer.

COPYRIGHT:

The SOFTWARE is protected by copyright laws, by international treaty provisions and by all the other pertinent national laws. Therefore, the CUSTOMER must treat this SOFTWARE just as any other material protected by copyright (for example, a book or a music recording). Given that the SOFTWARE is not protected against copying, the CUSTOMER may make one copy of the SOFTWARE solely for archival needs. In any case, the CUSTOMER may not reproduce the manual/s or any written material accompanying the SOFTWARE.

ADDITIONAL RESTRICTIONS:

The CUSTOMER may not rent or lease the SOFTWARE. However, the CUSTOMER may definitively transfer the rights granted in accordance with this agreement, with the condition that you also transfer all of the copies of the SOFTWARE and all of the written material, and that the transferee accepts the terms and conditions of this agreement. The CUSTOMER may not convert, decode, decompile or disassemble the SOFTWARE. Any transfer must include the most recent WL1000 and all of the previous versions.

Software Limited Warranty

EUROTECH warrants that the SOFTWARE shall run substantially in conformity with the manual/s and the written material accompanying the product for the period of one year from the date of purchase.

WARRANTY DISCLAIMER:

EUROTECH DISCLAIMS ALL OTHER WARRANTIES, EITHER EXPRESS OR IMPLIED, INCLUDING, AMONG OTHERS, WARRANTIES OF MERCHANTABILITY AND FITNESS FOR A PARTICULAR PURPOSE.

LIMITATION OF LIABILITY FOR INDIRECT DAMAGES:

UNDER NO CIRCUMSTANCES SHALL EUROTECH OR ITS SUPPLIERS BE LIABLE FOR DAMAGES (INCLUDING, WITHOUT LIMITATION, DAMAGES FOR LOSSES OR LOSS OF INCOME, WORK STOPPAGE, LOSS OF INFORMATION OR OTHER ECONOMIC LOSSES) RESULTING FROM THE USE OF THE EUROTECH PRODUCT, EVEN IN THE EVENT THAT EUROTECH HAS BEEN ADVISED OF THE POSSIBILITY OF SUCH DAMAGES. IN ANY CASE, IN ACCORDANCE WITH THIS AGREEMENT, EUROTECH'S LIABILITY SHALL BE LIMITED TO THE AMOUNT CORRESPONDING TO THE AMOUNT ACTUALLY PAID FOR THE SOFTWARE. SOME STATES, PROVINCES, OR COUNTRIES DO NOT ALLOW THE EXCLUSION OR LIMITATIONS OF INCIDENTAL OR CONSEQUENTIAL DAMAGES, SO THE ABOVE LIMITATION OR EXCLUSION MAY NOT APPLY TO YOU.

(This page is intentionally left blank.)

Chapter 2 Product overview

ERGONOMICS

The patented shape of Zypad WL1000 fits comfortably onto either arm, even over clothes, with a bright outdoor-readable colour TFT touch screen display, an easy to access keypad and a stylus to simplify input operations. The adjustable wrist strap on the back panel ensures secure grip, ideal weight distribution and maximum comfort.

RUGGED DESIGN

The Zypad WL1000 has been designed with a sturdy case and can withstand extreme temperatures, high humidity, moisture, and dust conditions.

HIGHLIGHTS

User Friendly operating system:

The Zypad WL1000 can be supplied with Windows CE 5.0 to meet the needs of developers and users.

Wireless Radio Design:

Integrated PAN (Bluetooth) and LAN (IEEE 802.11 b/g).

Integrated GPS positioning system:

Integrated 12-Channel GPS system

Tilt and dead reckoning system:

Detects if the operator has been motionless for a specified amount of time. Under these circumstances a location beacon can be transmitted to the remote server.

Multiple I/O:

Integrated USB Device, USB Master ports and IRDA port.

320x240 (1/4 VGA) 256k Colour High Visibility Display with Touch Screen and Automatic Contrast Adjust:

A huge amount of data as well as images can be displayed.

High Performance CPU and Memory System:

Even complex applications can be run on the device.

Enhanced Power Management:

The Zypad WL100 is based on Li-Ion power cell technology, this allows for maximum operating time and saves energy when the operator is not using the Zypad (patented).

FEATURES

Processor	AU 1100 @ 400 MHz
Memory	<ul style="list-style-type: none"> ➤ Up to 64 MB Non Volatile FLASH ➤ 64 MB RAM
Display	<ul style="list-style-type: none"> ➤ 320x240 pixel (1/4 VGA) 256K Colour 3.5" TFT with Touch Screen ➤ Automatic contrast adjustment via ambient light sensor
LEDs	<ul style="list-style-type: none"> ➤ Charge LED ➤ WLAN Activity LED ➤ WPAN Activity LED
Audio	Integrated
I/O	<ul style="list-style-type: none"> ➤ USB Device ➤ USB Master ➤ Audio Jack Stereo
WPAN	Bluetooth Class 2 (up to 10 meters)
WLAN	Integrated IEEE 802.11b/g with internal antenna
WWAN	External via Bluetooth
GPS	Integrated with internal antenna
Other devices	<p>Accelerometer for the <i>Tilt and Dead Reckoning System</i>. Can determine whether the user is moving or has fallen down. (GPS supplies the position) User accessible Mini SD</p>
Expansion slots	
Keyboard	11 backlit keys
Power	<ul style="list-style-type: none"> ➤ 3.6 V 2200 mAh Li-Ion Interchangeable Battery Pack ➤ Automatic power save when the computer is not in use (position sensor)
Battery charging	<ul style="list-style-type: none"> ➤ External universal power supply ➤ Multiple battery charger ➤ USB cable for PC connection ➤ Car cigarette lighter power supply
Input device	Integrated stylus connected to the strap
O.S.	WINDOWS CE 5.0
Application development system	WIN CE: Microsoft Platform Builder & Eurotech SDK for CE
Operating temperature	-10°C ÷ +50°C
Storage temperature	-20°C ÷ +50°C
Humidity	95% relative humidity non condensing
Environmental	Waterproof
Regulatory approvals	USA/CANADA - R&TTE
Weight	290 g (battery included)

ACCESSORIES

Battery Charging	Universal Power Supply (AC adapter) Dual Battery Pack charger (*) Vehicle (cigarette lighter) Battery Charger (*)
Display Protection	Display Protective Film pack
Cables	USB Device and USB Host cables
Audio	Earphone (cabled) (*) Bluetooth Earphone (wireless) (*)

(*) Optionally available accessories

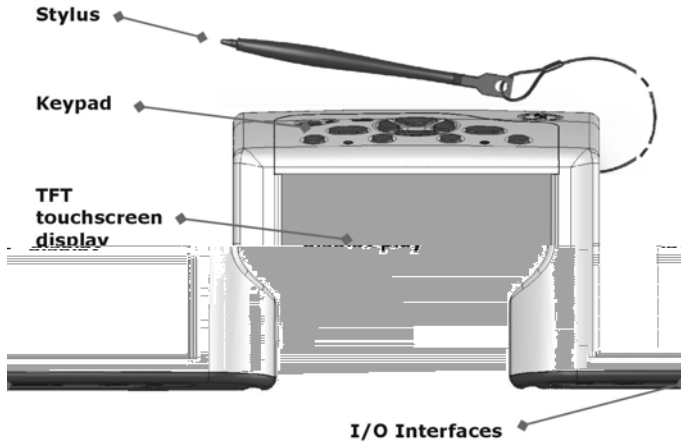


Figure 1. Front view of the Zypad WL1000

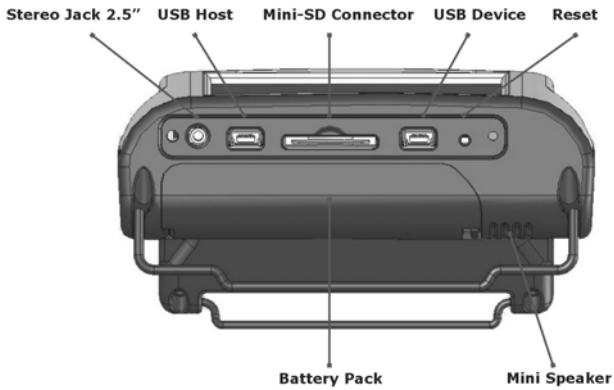


Figure 2. I/O interfaces (protection cover removed) of the Zypad WL1000

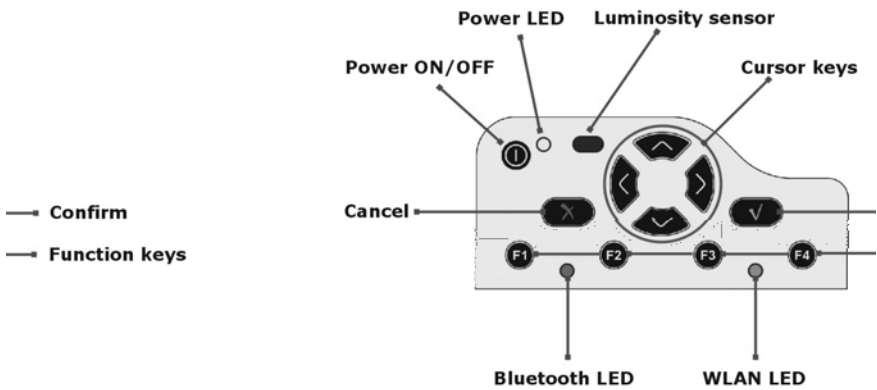
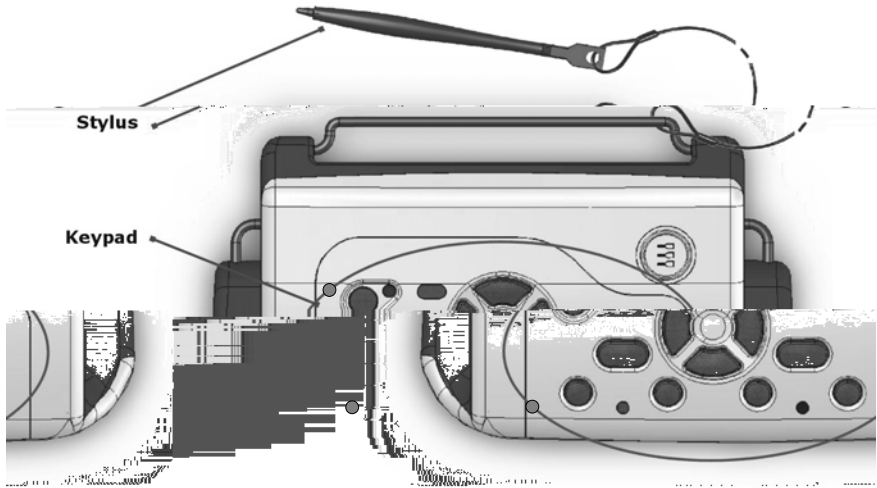


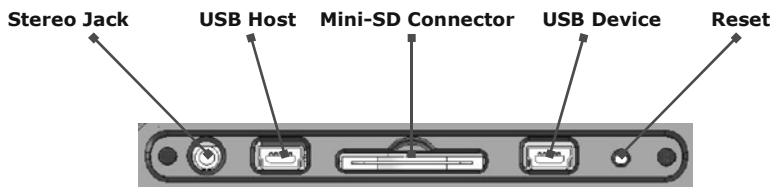
Figure 3. The keypad of the Zypad WL1000

The I/O interfaces and the Reset button

A waterproof cover on the bottom side of the WL1000 protects the I/O interfaces and the Reset button.



First remove the protective cover by gently pulling on the small tab to the left of the Zypad, as showed above. This will reveal the following I/O interfaces.



THE STEREO PORT

It is possible to connect an Earphone to the WL1000 dedicated stereo 2.5mm jack plug.

THE USB HOST PORT

This USB Host port is used to connect peripherals to the WL1000 (the host).

This port can also be used to connect a USB key for upgrading the firmware (for further information visit: <ftp://zypad:zypad@downloads.zypad.com>)

THE MINI-SD CONNECTOR

Use this connector to insert a standard Mini-SD memory card.

THE USB DEVICE PORT

This USB Device port is used to connect the WL1000 (as a slave device) to a host computer.

It is also used to connect the battery charger (AC adapter).

When the WL1000 is connected as a slave device, the host computer automatically charges the WL1000 battery.

THE RESET BUTTON

The Reset button allows you to stop all running applications and restart the ZYPAD WL1000. Doing so will stop all running applications and will erase any *unsaved* data within running applications. The reset operation will not erase any program or saved data. We recommend that the user save any data before resetting the WL1000. Use the stylus to lightly press the Reset button.

Power management

TURNING THE DEVICE ON AND OFF

The ON/OFF  button has several uses:

- Turning the Zypad ON
 - Pressing will turn the power ON
- Suspend Mode (see [Suspending the Device](#))
 - Pressing once will activate the suspend mode
 - Pressing it again will wake the WL1000 up
- Turning The Zypad OFF
 - Pressing for a few seconds will cause the power off*

* This will halt all applications that are running and erase any unsaved data. Be sure to save any unsaved data before you power-down the device.

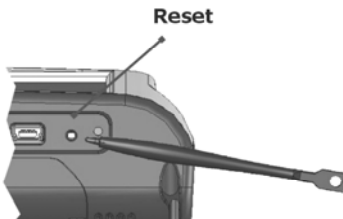
RESETTING THE DEVICE

This procedure describes how to reset the ZYPAD WL1000.



WARNING:

The reset will stop all running applications and will erase any *unsaved* data within any running application. Be sure to save any unsaved data within a running application before resetting the WL1000. The reset operation will not erase any program or saved data.



To perform a reset:

1. Locate the Reset button on the bottom side of the WL1000 under the protection cover
2. Use the stylus to lightly press the Reset button.

DETECTION OF THE USER ARM POSITION (THE ENERGY SAVING DEVICE)

The ZYPAD WL1000 integrates a newly patented Eurotech Energy Saving Device that detects the position of the user's arm.

When the arm that wears the device is hanging down beside the user's body the ZYPAD WL1000 turns off the screen backlight in order to save the battery.

When the user lifts the arm the backlight will be on again.

NOTE:




- The default configuration is for right-handed users, who wear the ZYPAD WL1000 on the left arm: the ZYPAD WL1000 turns off the screen backlight when the LEFT arm is hanging down beside the body.
If the user is left-handed and wears the ZYPAD WL1000 on the right arm, he must modify the "User settings" in the "Zypad Setup" selecting the RIGHT arm.
- The detection of the users arm position is deactivate when the WL1000 is connected to the AC adapter and is charging the battery.
It is recommended not to wear the ZYPAD WL1000 while charging the battery.

SUSPENDING THE DEVICE

The suspend mode turns off the screen backlight and powers down all the peripheral devices except for the CPU in order to save battery power. This mode will not halt any running application and does not erase any program or unsaved data.

How to activate the suspend mode

The following conditions will suspend the WL1000:

- When the WL1000 is idle for a user-defined period, this time can be customized using the "[Power Properties](#)" in the "Control Panel"
- Pressing the ON/OFF button  , pressing it again will wake the WL1000 up.

The Keypad

The keypad of the Zypad WL1000 is located on the upper side and is provided with the following buttons that can be also programmed (see [Zetup \(Zypad Setup\)](#), “**Hardware Keys**” Tab):



ON/OFF button

Use to turn the Zypad WL1000 on, off, enter suspend mode or exit suspend mode.



Enter (Confirm) button

Used for confirm or accept a request or option



Esc (Cancel) button

Used for cancel or deny a request or option



Left Arrow button

Works like the left arrow key on a standard PC keyboard



Up Arrow button

Works like the up arrow key on a standard PC keyboard



Right Arrow button

Works like the right arrow key on a standard PC keyboard



Down Arrow button

Works like the down arrow key on a standard PC keyboard



Function Key “F1” button

Programmable function key



Function Key “F2” button

Programmable function key



Function Key “F3” button

Programmable function key



Function Key “F4” button

Programmable function key

The Stylus

Your ZYPAD WL1000 comes with a stylus that you should use to tap or write on the screen. In all respects, the stylus works in the same way as a pen or mouse.



Figure 4. The stylus

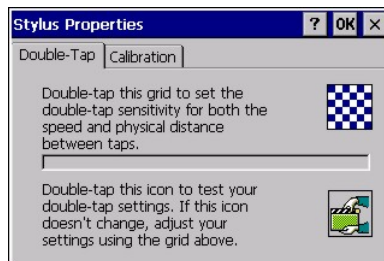
Three basic actions are possible when using the stylus:

1. **Tap / Double tap.** Lightly touch the screen with the stylus point to select or double tap to open an item. Lift the stylus after you tap an item. Tapping is equivalent to the click operation for selecting (double click for opening) an item with the mouse of your computer.
2. **Drag.** Place the point of the stylus on the screen and drag an item across the screen without lifting the stylus until you have completed the desired operation. This operation is equivalent to dragging an item with the left mouse button pressed and held.
3. **Tap and hold.** Hold the stylus point on an item for a short time until a menu will be displayed. This operation is equivalent to the right click on the mouse.

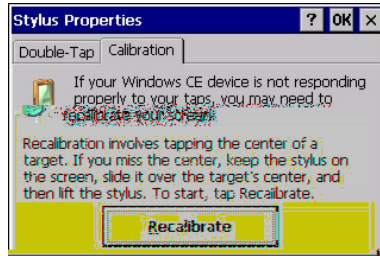
The Stylus Properties

The stylus properties allow you to configure the double tap sensitivity and the screen calibration. To set the Stylus properties:

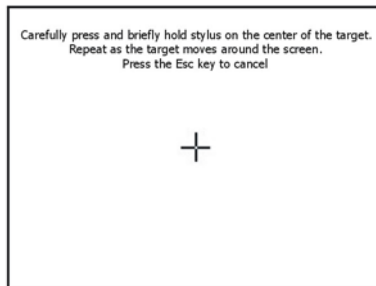
1. Tap **Start > Setting > Control Panel**
2. Double tap on the **Stylus** icon. You will obtain the following screenshot.



3. You will be able to set the Double-Tap sensitivity.
4. Follow the instructions that are shown.
5. Tap the **Calibration** tab.
6. The screen you obtain will allow you to calibrate the touch-screen.



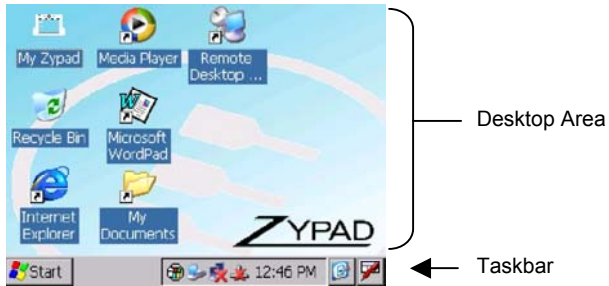
7. Tap on the **Recalibrate** button
8. Follow the instructions that will appear.



9. This enters the new calibration settings
10. Press the Enter button on the keypad to accept the new settings or the Esc button to keep the old settings.

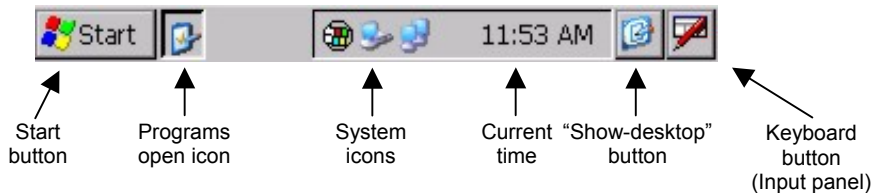
Navigating the Display

When you turn on your Zypad WL1000, you will obtain the desktop visualization as on a standard PC. The screen is divided in two sections: the Desktop Area and the Taskbar.



THE TASKBAR

As in a standard PC, the Taskbar at the bottom of the screen displays the Start button (the Flag), the system icons for utilities loaded in memory and the current time. Furthermore, the Taskbar includes the keyboard button, which opens and closes the [Input Panel](#), and the “Show-desktop” button. If you open a program, a corresponding icon will appear on the task bar.



Configuring the Taskbar and the Start Menu

Tapping: **Start > Setting > Taskbar and the Start Menu...** will allow the user to configure the of the Taskbar and Start Menu properties



THE COMMAND BAR

When you open a folder (the picture refers to the Control Panel folder, see the corresponding icon on the Task bar), use the Command Bar on the top of the screen to perform a task, such as opening or editing a file.


Command Bar →

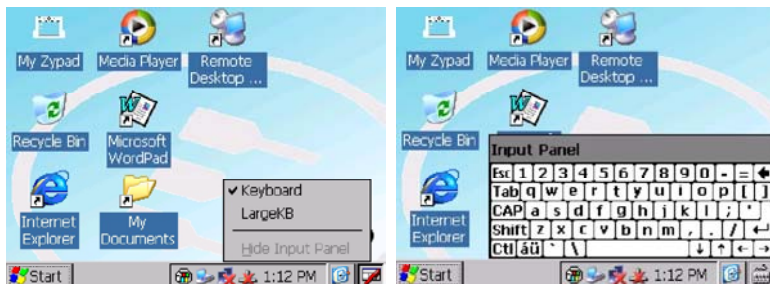


← Taskbar

The Input Panel

When the user starts a program or selects a field that requires text or numbers, the Input Panel (a QWERTY-style keyboard) automatically becomes available.

The Input Panel can also be opened by tapping the Keyboard button on the task bar and tapping **Keyboard** (the Keyboard button on the taskbar will change into a little keyboard ).



Use the stylus to select letters, numbers or symbols for the current application.

To close the Input Panel tap the little keyboard button on the taskbar and tap **Hide Input Panel**.



(This page is intentionally left blank.)

Chapter 3 The Control Panel

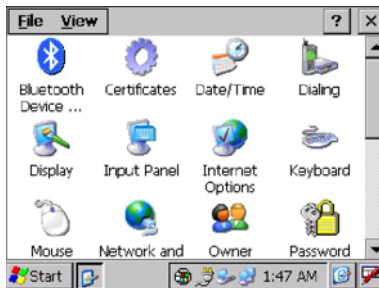
Introduction

The **Control Panel** program permits the user to set many of the system parameters.

To view it tap: **Start > Settings > Control Panel**



A screen with all the available icons will appear:



NOTE:

Each time you modify any parameters, you should save the Registry in order to maintain them at power off.

To do this double-tap on "Zetup", select the "Registry" tab and tap "Save".



Knowing the icons and their functions

BLUETOOTH DEVICE PROPERTIES



Bluetooth
Device
Properties

Used to enter the “Bluetooth Manager” and insert a Bluetooth device.
Before proceeding insure that the Bluetooth Communication feature in the Communication Tab of the Zypad setup is enabled: See the “[Zetup \(Zypad Setup\)](#)” paragraph.
The corresponding Bluetooth LED will turn ON.

CERTIFICATES



Certificates

Certificates are used by some applications for establishing trust and for secure communications.
Certificates are signed and issued by certificate authorities and are valid for a prescribed period. Windows CE manages multiple certificate stores.

DATE/TIME



Date/Time

Used to change the year, month, date, time, time zone or select automatic adjust for Daylight Saving Time.

DIALING PROPERTIES



Dialing

Used to adjust the dialling location settings (i.e. home or office)

DISPLAY PROPERTIES



Display

Use to adjust the Display Properties:

- Background
- Appearance
- Backlight

See the “[Zetup \(Zypad Setup\)](#)” paragraph for further features.

INPUT PANEL



Input Panel

Used to adjust the input panel (keyboard) properties

INTERNET OPTIONS



Internet Options

Used to adjust the following internet options:

- General
- Connection
- Security
- Privacy
- Advanced
- Popups

KEYBOARD



Keyboard

Used to adjust the properties of an external keyboard.

NOTE: the main keyboard used is the soft input panel

MOUSE



Mouse

Used to adjust the properties of an external mouse.

NOTE: the stylus provided with your WL1000 works in the same way as a pen or mouse (see the [Stylus](#) paragraph.)

NETWORK AND DIAL-UP CONNECTIONS



Network and
Dial-up
Connections

Configures Network and Dial-up connections.
(See the "[Starting a WAN connection](#)" paragraph)

OWNER



Owner

Used to set the owner properties:

- Owner identification information
- Notes and additional information

Network identification for remote networks

PASSWORD

Password

Used to set the password properties

PC CONNECTIONPC
Connection

Used to set the PC connection properties.

These settings control the connection between your Zypad WL1000 and a desktop computer.

POWER

Power

Used to check battery power and set the power properties.

The “Battery” tab

Provides an indication of the battery charge level

If the “Very Low” warning message is shown, the remaining time is less than 30 minutes before the device shuts down.

The “Schemes” tab

Allows you to select one of the power available schemes: **Battery Power** or **AC Power**. You can also choose the amount of time that must pass before the system will switch to the next power conservation state.

The available power conservation states are:

User Idle: the user has stopped interacting but may still be using the device

System Idle: Entered after a period in User Idle, driver and system process are still active

Suspend: Entered when driver and system process stop interacting with the system

“Device Status” Tab:

Shows the power level provided for each specific device.

The power level ranges from “**High (D0)**” which means the device is at the highest power level to “**Off (D4)**” which means the device is at the lowest power level

NOTE: The battery status is also displayed with an icon on the task bar.



The AC adapter is providing power to the WL1000



The AC adapter is providing to the WL1000 and is charging the main batteries.



The battery is providing power to the WL1000.



The battery is very low and needs charging.

REGIONAL SETTINGS



Use to set:

- The regional settings
- The input language
- The user Interface Language

REMOVE PROGRAMS



Used to remove the user-installed programs.

STARTUP MANAGER



Used to select the programs you wish to run automatically and in which order when the WL1000 turns on.

STORAGE MANAGER



Allows you to manage the proprieties of the storage devices installed (i.e.: Internal Flash, SD Memory Card)

STYLUS



Allows you to manage the stylus proprieties:

- Double-tap sensitivity for both the speed and physical distance between taps
- Calibration of the touch screen

SYSTEM



Allows you to check and set the system proprieties:

- General information
- Adjust RAM memory allocation
- Name of the device
- Copyrights information

TERMINAL SERVER CLIENT LICENSES



Terminal
Server Client
Licenses

Shows the installed terminal server client licenses

VOLUME & SOUNDS PROPERTIES



Volume &
Sounds

Used to set the volume and sound properties.

ZETUP (ZYPAD SETUP)



Zetup

Allow you to set the setup parameters of your Zypad WL1000.

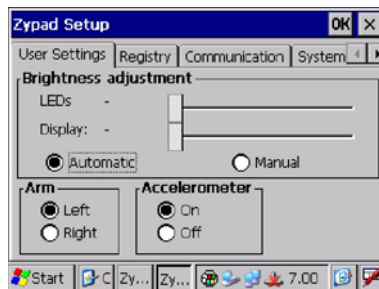
User Settings:

Allow users to set the LED and Display brightness.

Furthermore it allows you to select which arm the WL1000 is on and set the accelerometer in order to activate the suspend mode when your arm is hanging down beside the body.

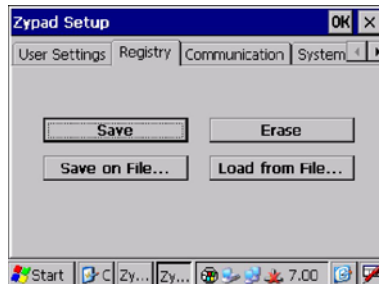
Default settings are:

- Brightness adjustment: "Automatic"
- Arm: "Left"
- Accelerometer "Off"

**Registry:**

Allows users to save, erase or load the WL1000 Registry.

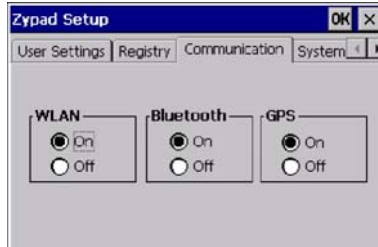
WARNING: Each time you modify any parameter; you should save the Registry, by doing so the Zypad will maintain them at power off.



Communication:

Allow the user to turn On or Off the communication devices. Default settings are:

- WLAN: "On"
- Bluetooth: "On"
- GPS: "On"

**System:**

Displays the versions of the operating system and firmware installed.

The "Soft Reset button" allows you to perform a reset that will halt all applications that are running, erases any unsaved data and resets the Operating System.

Be sure to save any unsaved data before perform the reset.

**Hardware Keys:**

Displays the function assigned to each key.

It is possible to change the function by tapping on each key and selecting a new one from the list that will appear



Chapter 4 Synchronization

Installing & Using Microsoft ActiveSync

Microsoft ActiveSync is the synchronization software recommended for transferring and synchronizing files between the WL1000 and a Host PC running Windows XP.

INSTALLING MICROSOFT ACTIVESYNC ON THE HOST PC

Complete the following steps to install Microsoft ActiveSync on the host computer:

1. Insert the CD-ROM containing the Microsoft ActiveSync program software on the Host PC
2. The setup programme should Auto Start.
3. Follow the instructions that will appear on the screen

SETTING UP A PARTNERSHIP

1. Start ActiveSync on the Host PC
2. Turn on your WL1000
3. Using the USB cable provided connect the WL1000 USB port to a USB port of the Host PC.

TRANSFERRING FILES

To transfer files, complete the following steps on the Host PC:

- After you have set up the partnership, tap the “Explorer” button at the top of the ActiveSync window (or select “Explorer” from Start > All Programs > Accessories > Windows Explorer). The WL1000 is detected as a “Mobile Device”
- Navigate to the target directory on your WL1000 and copy the desired file by using the Copy/paste method or dragging and dropping the desired file(s) into the folder.

(This page is intentionally left blank.)

Chapter 5 Getting Connected

Your Zypad WL1000 provides for the following networking availability:

- **WPAN** (Wireless Personal Area Network, up to 10 meters): via integrated Class 2 Bluetooth device (internal antenna)
- **WLAN** (Wireless Local Area Network): via integrated IEEE 802.11b/g device (internal antenna)
- **WWAN** (Wireless Wide Area Network): via external Bluetooth wireless modem
- **WAN** (Wide Area Network): via external Serial USB device

Configuring Bluetooth for WPAN e WWAN networking

The integrated Bluetooth device allows users to have access to features including dial up, file transfer, wireless networking, wireless communication and 995 676.1598 Tm(WW)1 613.6403 Tu80.0002 Tw 7.9



8. Flag the **Active** option. A red flag will appear on the device icon
9. Tap **OK**

HOW TO REMOVE A BLUETOOTH DEVICE

1. Tap **Start > Settings > Control Panel > Double tap on Bluetooth Device Properties**
2. In the **Trusted** list double tap on the device you want to remove
3. Tap **Delete**

HOW TO CONFIGURE BLUETOOTH FOR ACCEDING TO WWAN NETWORKS

With your Zypad WL1000, it is possible to access a WWAN network by using an external Bluetooth wireless modem.

Note:



Means device not connected to a network

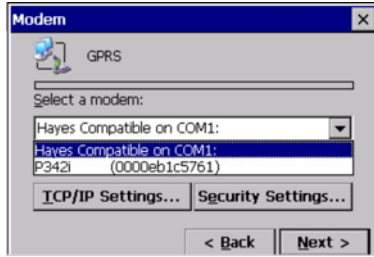


Means device connected to a network

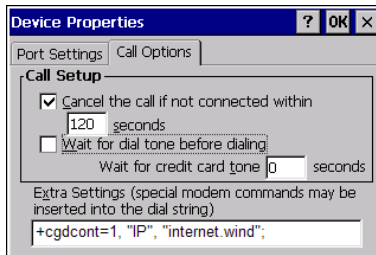
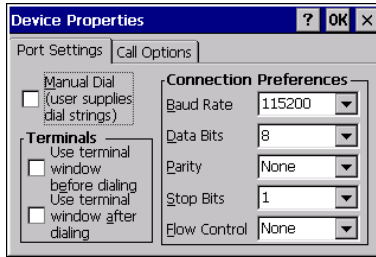
The following steps will give you an example about how to configure the WL1000 Bluetooth feature for using an external GPRS device.

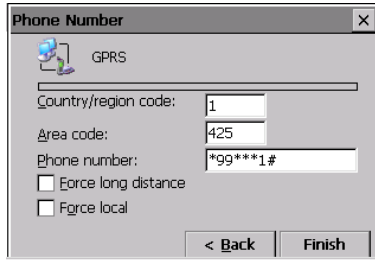
In the example, the GPRS device used is called: P342i.

1. Insure that the Bluetooth Communication feature in the Communication Tab of the Zypad setup is enabled: see the "[Zetup \(Zypad Setup\)](#)" paragraph. The corresponding LED will turn ON.
2. Tap **Start > Settings > Network and Dial-up Connections**
3. Double tap on **Make New Connection**
4. Type a name for the connection
5. Tap **Next**

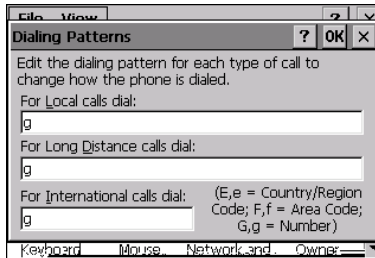


6. Select the GPRS device as a modem (in the example, the P342i device). It is possible to add new Bluetooth modems by tapping the **“Bluetooth...”** button and following the procedure listed in the paragraph: [“How to insert a Bluetooth device”](#)
NOTE: The Hayes Compatible modem is a standard default option of WinCE that is not available with the WL1000
7. Tap **“Configure...”**
8. Select the parameters and the Call Options according to your GPRS operator (these may differ from the parameters used below as example)





9. Tap **Finish**
10. Tap **Start > Settings > Control Panel > Dialling**
11. Configure the **Dialling patterns**



12. Tap **OK**
13. Run **Internet Explorer**
14. Select the **View** menu > **Internet Options**

Starting a Wireless Network Connection (WLAN networking)

Your Zypad WL1000 integrates an IEEE 802.11b/g Wireless LAN feature. The first time you use your WL1000 the internal WLAN card is not connect to a wireless network.

Note:




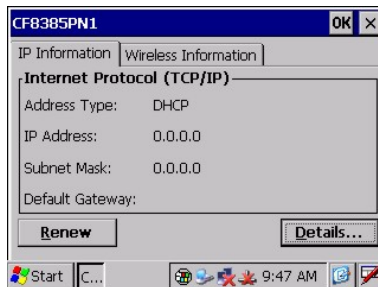
Means WLAN is not connected to a wireless network



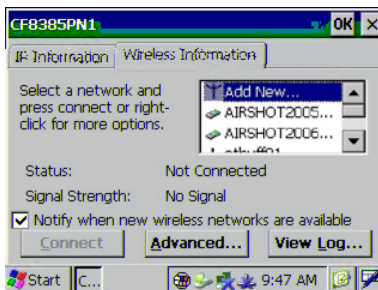
Means WLAN is connected to a wireless network

HOW TO START THE CONNECTION

1. Insure that the WLAN feature in the Communication Tab of the Zypad setup is enabled: see the "[Zetup \(Zypad Setup\)](#)" paragraph. The corresponding LED will turn ON.
2. Double tap the  icon on the Task bar
3. The IP Information will be displayed. The first time no information will be available

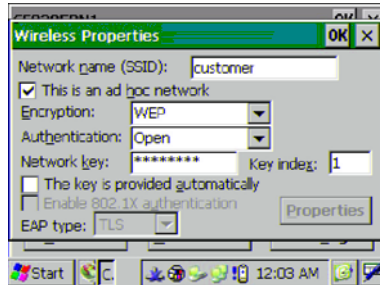


4. Select the "Wireless Information" tab



5. A list with the available Wireless access points will be displayed.

6. Select the access point you want by double-tapping it or double-tap "Add New " to add a new access point
7. Select the parameters in the "Wireless Properties" and tap **OK** to confirm



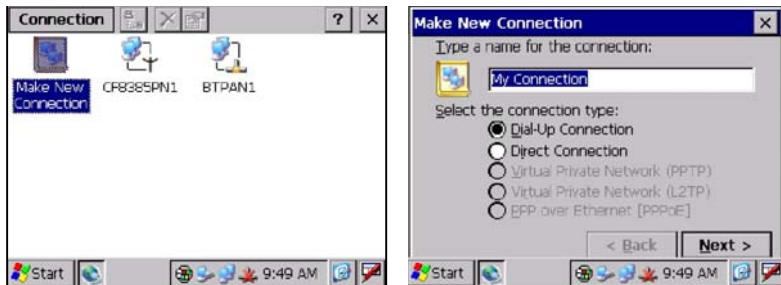
8. Tap "**Connect**" to connect WLAN with the Access point.
9. The internal WLAN card is now connected to the access point you have selected. Tap the "IP Information" tab to have the list of the parameters



Starting a WAN connection

These steps will tell you how to create a new WAN connection on your WL1000:

1. Insure that the WLAN feature in the Communication Tab of the Zypad setup is enabled: see the "[Zetup \(Zypad Setup\)](#)" paragraph. The corresponding LED will turn ON
2. Tap **Start > Settings > Network and Dial-up Connections**
3. Double tap the **Make New Connection** icon
4. In the **Make New Connection** dialog box, enter a name for the connection
5. Select the connection type: Dial-up or Direct



- **If you selected the "Dial-up Connection":**
The procedure to follow is the same describe in the paragraph "[How to Configure Bluetooth for acceding to WWAN networks](#)". The connection you have just created appears as an icon in the "Network and Dial-up Connections" folder.
- **If you selected the "Direct Connection":**
The selectable device is "Serial USB" only. The Device dialog box allows you to configure the Serial USB properties and set the TCP/IP and security settings



(This page is intentionally left blank.)

Chapter 6 Software programs

As shown in the figure below the **Start** button opens a menu that provides quick access to frequently used programs and common system areas.



The Windows CE version installed has the following items in the **Start** menu:

Start	▶ Programs	Communication	▶ Terminal
		Eurotech	▶ Gpsview
		Microsoft File Viewers	▶ Microsoft Excel Viewer Microsoft Image Viewer Microsoft PDF Viewer Microsoft PowerPoint Viewer Microsoft Word Viewer
		Command Prompt Internet Explorer Media Player Microsoft WordPad Remote Desktop Connection Windows Explorer	
Favorites	▶ (Empty)		
Documents	▶ (Empty)		
Settings	▶ Control Panel Network and Dial-up Connections Taskbar and Start Menu...		
Help			
Run			

Getting Satellite Signals, The GPSView Program

Your Zypad WL1000 features an integrated 12 Channel GPS system. GPSView is a program developed by Eurotech; it is demonstration software for viewing GPS data.

STARTING THE GPSVIEW PROGRAM

The steps below show you how to start **GPSView** and get signals from up to 12 satellites.

1. Tap **Start > Programs > Eurotech > GPSView**
2. The WL1000 automatically starts searching for satellites. A timer on the right automatically starts counting until the first satellite fix is acquired.



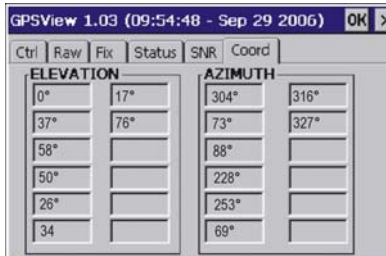
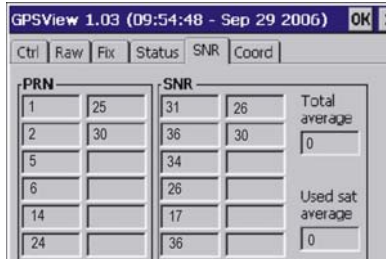
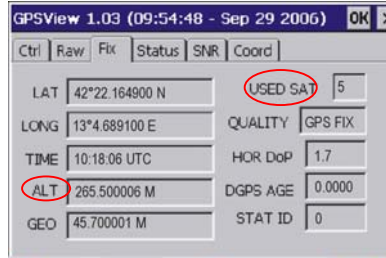
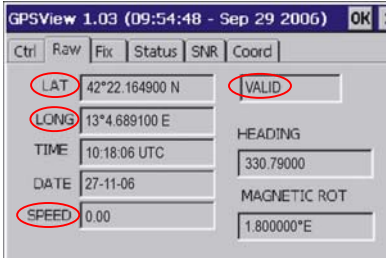
NOTES:

- When you are running the acquiring process for the first time you can speed up the satellite detection by leaving your WL1000 in a vertical position (screen rotated 90° counter clockwise). In this way the integrated GPS antenna is directed
- It can take a few minutes to acquire satellites and fix your position, if one or more of the following conditions are verified since you last fixed your position:
 - a. It is first time you are running the acquiring process
 - b. The geographic area has changed
 - c. A lot of time (several days) has passed



In these cases, in order to speed up the satellite detection the suggested procedure is to tap **STOP** in the **RUN CTRL** section and then tap **COLD START**

The following are demonstration screenshots displaying GPS information:



The table below lists the main data names used to find your global coordinates.

LABEL:	MEANING:
LAT	Latitude in degrees starting from the Equator
LONG	Longitude in degrees starting from the Prime Meridian (Greenwich)
SPEED	Speed in m/s
ALT	Altitude in meters from the sea level
USED SAT	Number of acquired satellites (maximum 12)
VALID	Status of the acquiring process (VALID/INVA ID)