



LAWN SWEEPER

Model LS340

Starting Serial No. 1001

Owner/Operator's Manual & Illustrated Parts List



CAUTION

Avoid injuries. Read and understand Operator's manual
before operating tractor or equipment.
It contains instructions for safe operation.



CAUTION

- READ AND UNDERSTAND OPERATORS MANUAL BEFORE OPERATING OR SERVICING.
- OBEY ALL SAFETY INSTRUCTIONS. FAILURE TO DO SO MAY RESULT IN INJURY TO YOU OR OTHERS.
- BE SURE MACHINE IS IN SAFE OPERATING CONDITION BEFORE USE.
- INSPECT MACHINE DAILY. REPLACE ALL WORN OR DAMAGED PARTS.
- KEEP ALL GUARDS AND SHIELDS IN PLACE.
- CHECK OPERATION OF ALL SAFETY INTERLOCK SWITCHES DAILY.
- DO NOT OVERRIDE INTERLOCK SYSTEM, IT IS FOR YOUR PROTECTION.
- DO NOT ALLOW MINORS OR THE INEXPERIENCED TO OPERATE MACHINE.
- KEEP PEOPLE AND PETS A SAFE DISTANCE AWAY FROM MACHINE USING POWER DRIVEN ATTACHMENTS. INJURY COULD RESULT FROM FLYING DEBRIS.

Date of Purchase: Month _____ Day _____ Year _____

Dealer Name _____ Phone _____

Serial Number _____

Model Number _____

ALWAYS GIVE MODEL AND SERIAL NUMBER WHEN ORDERING SERVICE PARTS

STEINER
TEXTRON

Steiner Division of Textron Inc.

STEINER TURF EQUIPMENT, INC.
289 N. Kurzen Rd., P.O. Box 504
Dalton, Ohio 44618

Telephone: (330) 828-0200
FAX: (330) 828-1008

TABLE OF CONTENTS

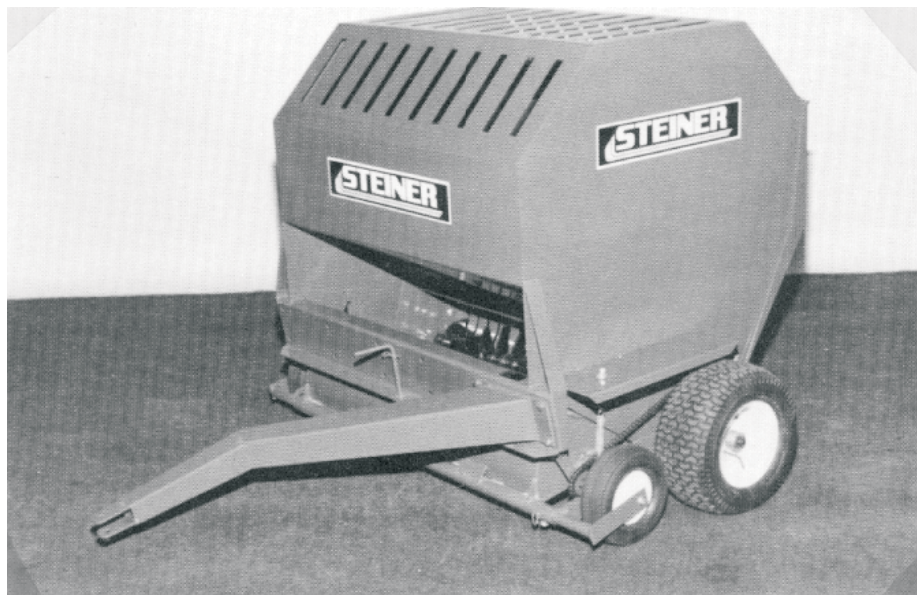
INTRODUCTION	SECTION 1	page
Description		2
Specifications		3
SAFETY	SECTION 2	
General Safety.		4
Operator Safety		4
OPERATION	SECTION 4	
Operating Instructions		5
SERVICE	SECTION 5	
Service Schedule		6
PARTS	SECTION 6	
Parts List and Illustrations Index		7
Warranty		

12

Description

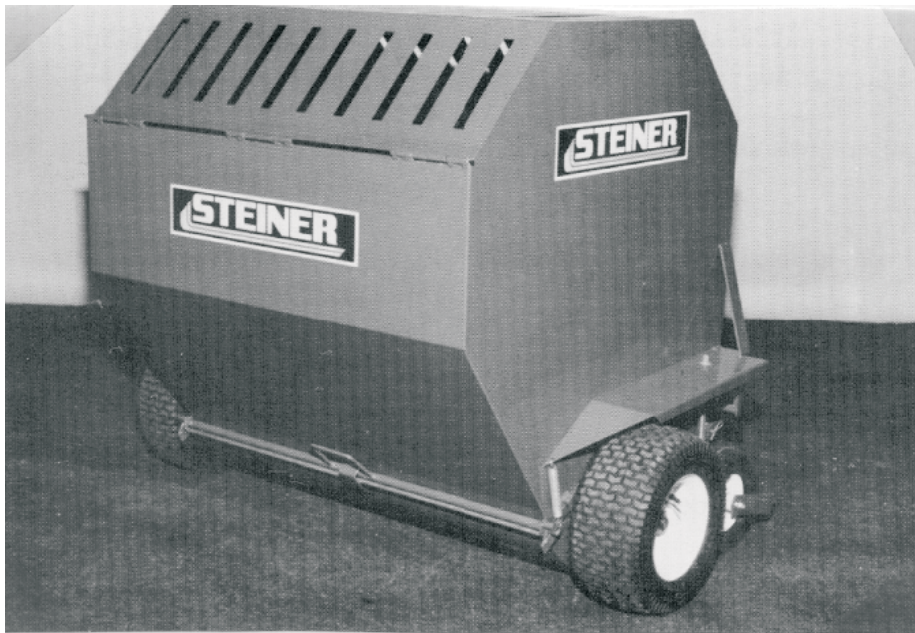
The Steiner Lawn Sweeper is designed to give a “clean sweep” in your lawn sweeping operations. The unit is ground-driven so it can be pulled by any lawn and garden tractor. It can be used to trail behind with offset hitch while mowing, or regular hitch to clean-up after you've finished mowing. The packing action allows you to put much more material into the unit before it is necessary to unload.

There is a transport position for the sweeper and clutch levers on each wheel to disengage the wheel clutches.



Specifications

Overall width	-----	62"
Overall height	-----	52"
Overall length to hitch	-----	66"
Width of pick up	-----	40"
Brush	-----	3 paddle, staggered
Depth wheels	-----	Semi-pneumatic
Hitch	-----	Right, left or center pull adjustment
Carrying capacity	-----	24 cu. ft.
Weight	-----	530 lb.





BE ALERT!

ATTENTION: This symbol identifies potential health and safety hazards. It marks safety precautions.

ATTENTION: Your safety is involved.

GENERAL SAFETY

1. Read and understand the owner's manual, before attempting to operate this machine.
2. Operate all controls from the operator's seat. **NO RIDERS.**
3. Keep all shields in place and safety switches adjusted properly.
4. Do not leave equipment unattended. **STOP** the engine and remove the key.
5. Do not allow minors or the inexperienced to operate this machine.
6. Keep people and pets a safe distance away from machine using power driven attachments. Injury could result from flying debris.

OPERATING SAFETY

1. Remove large objects or debris from the path of the lawn sweeper..
2. Before leaving the tractor seat to clear blockage, service or make adjustments:
 1. **Set PARKING brake.**
 2. **Stop Engine.**
3. Disengage clutches and raise broom to transport position before transporting at high speed.

Operating Instructions

- › 1. Determine hitch position for offset or straight pull position.
- › 2. Transport to clean-up site with the clutches disengaged and sweeper in transport position.
- › 3. Lower the sweeper housing and adjust sweeper height on right side of sweeper housing by choosing the pin location to regulate gauge wheel height. NOTE: Operation is best when the sweeper is approximately 1/2" below the tips of the grass, but does not "scrub" the lawn.
- › 4. Adjust the float springs allowing the sweeper to "float" over rough areas or high spots in the lawn.
- › 5. Engage clutches on both wheels by rotating the lever approximately 180 deg.
- › 6. When sweeping leaves - the best results are obtained by sweeping several times during the leaf fall rather than waiting until there is a large accumulation. A large accumulation will require several passes to make a clean sweep. **MAXIMUM SPEED IS 10 M.P.H.**
- › 7. Open rear door to unload.
- › 8. To transport - Always disengage wheel clutches and raise sweeper housing. **DO NOT TRAVEL AT HIGH SPEEDS WITH CLUTCHES ENGAGED! MAXIMUM SPEED IS 10 M.P.H.** NOTE: to disengage both wheels rotate each lever approximately 180 deg. You can feel a high spot when it is disengaged.



Maintenance

Daily

Visually check chain drive - it should not run "dry".
Lube with chain lube or 30W oil

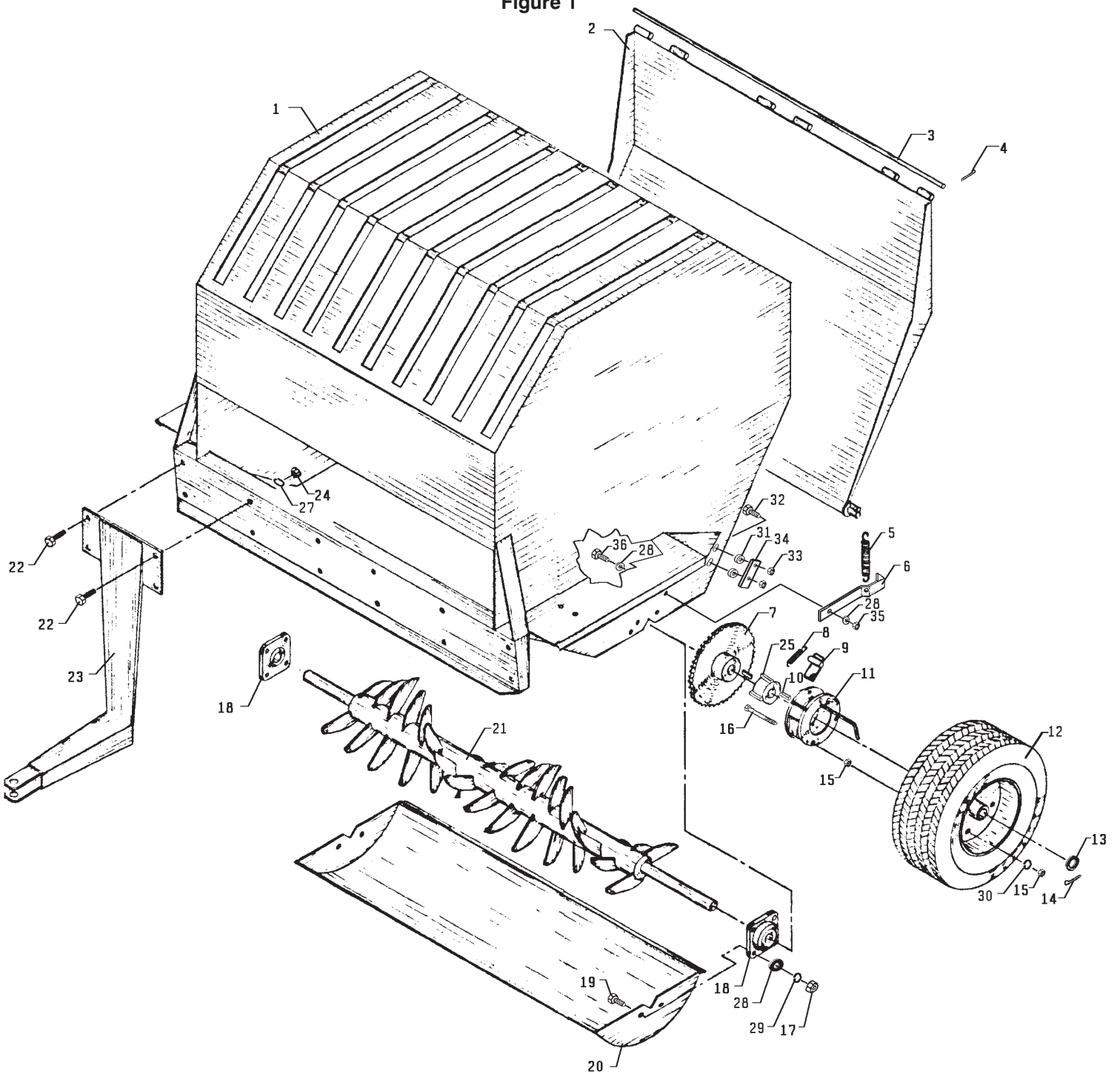
Weekly or 50 Hours

Grease all bearings and wheels.
Check tire pressure (12 lbs.)

Parts Index

<u>GROUP</u>	<u>FIGURE</u>	<u>PAGE</u>
Main Parts.	Fig. 1.	8
Brush Parts	Fig. 2.	10

Main Parts
Figure 1

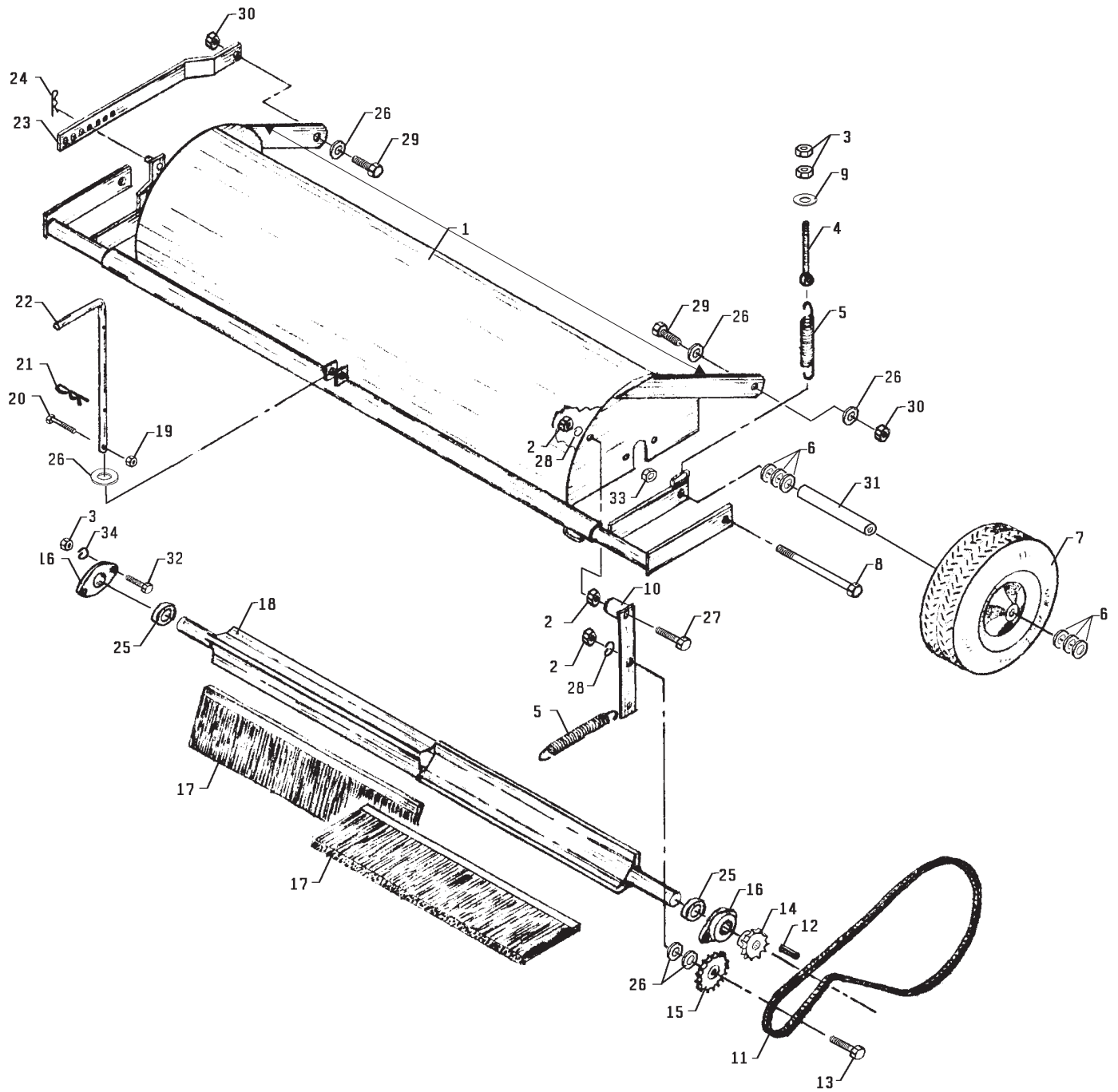


Parts List for Figure 1

Ref	Part no.	Description	Quantity
1	62-602	Main Frame	1
2	60-187	Door	1
3	42-205	Hinge Rod	1
4	02-CP0406	Cotter Pin, 1/8 x 3/4	2
5	41-010	Spring, 5"	2
6	40-114	Latch, Right	1
	40-115	Latch, Left	1
7	83-407016	Sprocket	1
8	41-013	Spring	2
9	86-020	Clutch Pawl, Right	1
	86-021	Clutch Pawl, Left	1
10	85-K0410	Key, 1/4 x 1-1/4	3
11	86-043	Clutch	2
12	50-030	Wheel & Tire Assembly	2
	53-089	Tire, 16 x 7.50 x 8, Turfsaver	1
	50-101	Rim	1
	55-IB-1	Bearing	1
*	29-053	Grease Fitting, 1/4-28 long	2
13	95-16	Flat Washer, 1" SAE	7
14	02-CP0612	Cotter Pin	2
15	92-05	Nut, 5/16	12
16	90-0528	Bolt, 5/16 x 3-1/2	6
17	92-06	Nut, 3/8	8
18	55-FB22016	Bearing	2
19	90-0610	Bolt, 3/8 x 1-1/4	8
20	60-188	Bottom Pan	1
21	80-124	Packer Rotor	1
22	90-0810	Bolt, 1/2 x 1-1/4	4
23	62-357	Hitch	1
24	92-08	Nut, 1/2	4
25	86-044	Hub, Clutch Drive	2
*	00-001	Decal, Steiner Large	4
27	96-08	Lock Washer, 1/2	4
28	94-06	Flat Washer, 3/8 USS	12
29	96-06	Lock Washer, 3/8	8
30	96-05	Lock Washer, 5/16	6
31	85-SC06	Set Collar, 3/8 (After Serial #1097)	4
32	99-K02	Flange Bolt, 5/16 x 1 (After Serial #1097)	4
33	99-E12	Flange Nut, 5/16 (After Serial #1097)	4
34	64-535	Stop, Adjustable Latch (After Serial #1097)	2
35	99-A06	Locknut, Stover 3/8	2
36	90-0608	Bolt, 3/8 x 1	2

* Not Illustrated

Brush Parts
Figure 2



Parts List for Figure 2

Ref	Part no.	Description	Quantity
1	62-385	Housing, Brush	1
2	92-08	Nut, 1/2	3
3	92-06	Nut, 3/8	8
4	42-209	Adjuster, Spring Tension	2
5	41-010	Spring, 5"	3
6	95-10	Flat Washer, 5/8 SAE	12
7	53-104	Wheel, 10.25 x 3.25 Caster (Serial No. 1001 - 1559)	2
	55-G527	Ball Bearing for 53-104	2
	55-107	Bearing, 5/8 ID x 1-3/8 OD (Optional, Heavy Duty)	2
	53-186	Wheel, 10.25 x 3.25 Caster (Serial No. 1560 -)	2
	55-112	Bearing, Roller 5/8 ID X 1-3/8	1
	53-187	Retainer, Flanged For 53-186	2
8	90-0640	Bolt, 3/8 x 5	2
9	94-06	Flat Washer, 3/8 USS	2
10	40-227	Idler Arm	1
11	56-RC40-59	Chain, Drive #40, 59" long	1
	81-056	Connector Link, #40 Chain	1
	81-076	Half Link, #40 Chain	1
12	85-K0410	Key, 1/4 X 1-1/4	1
13	90-0816	Bolt, 1/2 x 2	1
14	83-H401216	Sprocket	1
15	83-4017E08	Idler Sprocket	1
16	55-FB23016	Flange Bearing, 2 Bolt, 1"	2
17	79-017	Brush, Strip	6
18	80-125	Rotor, Brush	1
19	99-A04	Locknut, Stover 1/4	1
20	90-0412	Bolt, 1/4 X 1-1/2	1
21	02-PP0420	Presto Pin, 1/8 x 2-9/16	1
22	42-207	Transport Handle	1
23	42-206	Height Adjuster	1
24	02-PP0318	Presto Pin, 3/32 x 2-5/16	1
25	85-SC16	Set Collar, 1"	2
26	95-08	Flat Washer, 1/2 SAE	6
27	90-0820	Bolt, 1/2 X 2-1/2	1
28	96-08	Lock Washer, 1/2	2
29	90-0810	Bolt, 1/2 x 1-1/4	2
30	99-A08	Locknut, Stover 1/2	2
31	50-062	Shaft, Wheel	2
32	90-06010	Bolt, 3/8 X 1-1/4	4
33	99-E13	Flange Nut, 3/8	2
34	96-06	Lock Washer, 3/8	4

