

# Parts Manual

## Counter Type Electric Convection Steamer



### Series: SteamCraft Models 21CET16

---

1333 East 179<sup>th</sup> Street  
Cleveland, Ohio 44110

Phone: (216) 481-4900  
1-800-338-2204

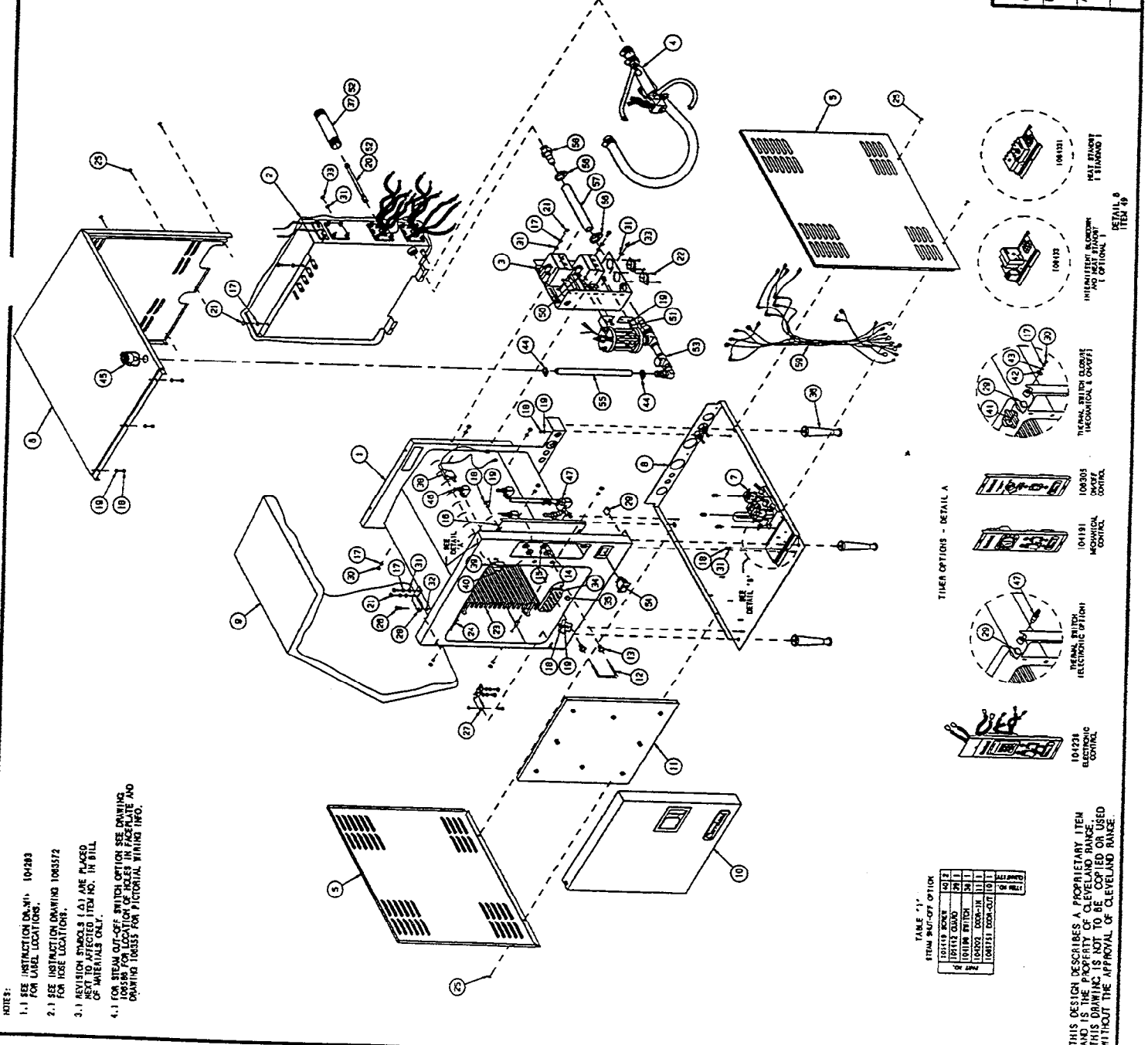
Fax: (216) 481-3782  
[www.clevelandrange.com](http://www.clevelandrange.com)

 Cleveland

LET.	REVISIONS	DATE	BY
A.	UPDATED PER VARIOUS E.O.'S PER 80-3722	11-02-91	P.D.

ITEM NO.	DESCRIPTION
59	WIRE HARNESS, MECHANICAL, SC 3/3
58	WIRE HARNESS, ELECTRONIC, SC 3/3
57	FITTING, 3/4" H X 3/4" NPT
56	HOSE, SILICONE 3/4" ID X 1/8" OD X 11"
55	CLAMP, PLASTIC 1-1/8" OD HOSE
54	HOSE, SILICONE 1/2" ID X 3/4" OD X 12"
53	SWITCH ROCKER, SPST (CLEAN LIGHT)
52	FLYNT AND DESOLDER ASSEMBLY, SC 5.1
51	SEALANT, RESTORABLE
50	NUT, HEX, COK ELASTIC 10-24
49	SCREW, PAN HEAD 10-24 X 1/2", S/S
48	HEAT STANDBY PLATE
47	INT. BLOWDOWN/TREAT STANDBY PLATE
46	THERMAL SWITCH
45	BREATHER/SPRAY NOZZLE ASSEMBLY
44	SPRAY NOZZLE ASSEMBLY
43	PORT ASSEMBLY, DESOLDER
42	CLAMP, PLASTIC 3/4" O.D. HOSE
41	WASHER, FLAT, 3/8" X 7/8"
40	CLOSURE, THERMAL OPERING
39	SCREW, TORX T88 8-32 X .312, S/S
38	GUARD, SWITCH PROTECTION
37	SWITCH ASSY, CAPT. STEAM SHUT-OFF
36	RIPPLE, 1-1/4" X 6-1/2", BLACK
35	LEG, ADJUSTABLE, PLASTIC, 1"
34	NUT, AODRN
33	SCREEN, COMPARTMENT DRAIN
32	NUT, HEX, ELASTIC LOCK, 1/4"-20
31	RING, SRRP, S/S
30	WASHER, FLAT, 1/4" X 5/8", S/S
29	NUT, HEX 1/4"-20, S/S
28	D-CLIP, SMALL
27	HURGE ASSY, WELD, UPPER
26	HURGE ASSY, WELD, BOTTOM
25	PH, HINGE
24	SCREW, TRUSS HD. SHT. RET., 18 X 1/2"
23	PIN, RACK
22	SCREW, PAN SLIDE, 20"
21	SCREW, TORX 18 X 1/2", SELF-TAPPING
20	SCREW, HEX HEAD 1/4"-20 X .625, S/S
19	NOZZLE, ASSEMBLY
18	WASHER, FLAT #10, S/S
17	NUT, HEX LOCK 10-32
16	WASHER, LOCK, 1/2" X 1/4", S/S
15	PANEL, CONTROL ASSY, ON/OFF
14	PANEL, CONTROL ASSY, MECHANICAL
13	NUT, LOCK 1/2"-13 PREVAILING TORQUE
12	WASHER-RICH, TYPE 8/8
11	CATCH, DOOR
10	DOOR ASSY, TRIMMER, H.L.
9	DOOR ASSY, H.L. W/ALCO, W/ACTUATOR
8	INSULATION, CUT, SC 5.1
7	BASE, WELD ASSEMBLY, SC 3.1/SC 5.1
6	VALVE ASSEMBLY, WATER TIGHT
5	SHEETING, TOP/BOTTOM, SC 3.1 H.L.
4	VALVE ASSEMBLY, SC 3.1
3	COMPONENT PANEL ASSY, SC 5.1 H.L.
2	GENERATOR ASSEMBLY, SC 5.1 H.L.
1	CAVITY, WELD ASSY, SC 3.1 H.L.

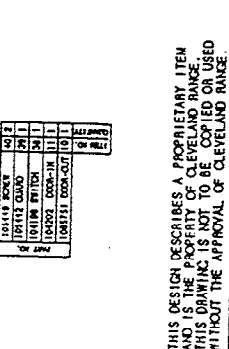
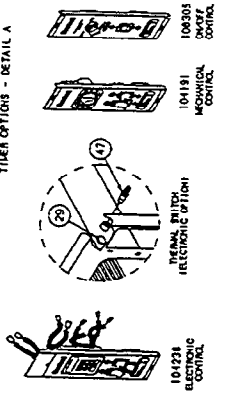
TOLERANCES UNLESS AS NOTED	DESCRIPTION
DECIMAL	
± N/A	
ANGULAR	
± N/A	
CK	
DATE	07-13-93
DRAWN BY	DUTCHMAN
APPROVED BY	
TITLE	STEAMCRAFT ULTRA 5, ELECTRIC, H.L. FINAL ASSEMBLY, ALL OPTIONS
SCALE	7/8" = 1"
1339 East 19th St. Cleveland, Ohio 44110-2374	
CLEVELAND RANGE INC.	



NOTES:  
 1.1 SEE INSTRUCTION DRAWING 104288 FOR LABEL LOCATIONS.  
 2.1 SEE INSTRUCTION DRAWING 1063572 FOR HOSE LOCATIONS.  
 3.1 REVISION PARTS 1 & 2 ARE PLACED NEXT TO AFFECTED ITEM NO. IN BILL OF MATERIALS ONLY.  
 4.1 FOR STEAM OFF-OFF SWITCH OPTION SEE DRAWING 106588 FOR LOCATION OF HOSE AND DRAWING 106585 FOR PICTORIAL WIRING INFO.

TABLE 11'  
 STEAM SHUT-OFF OPTION

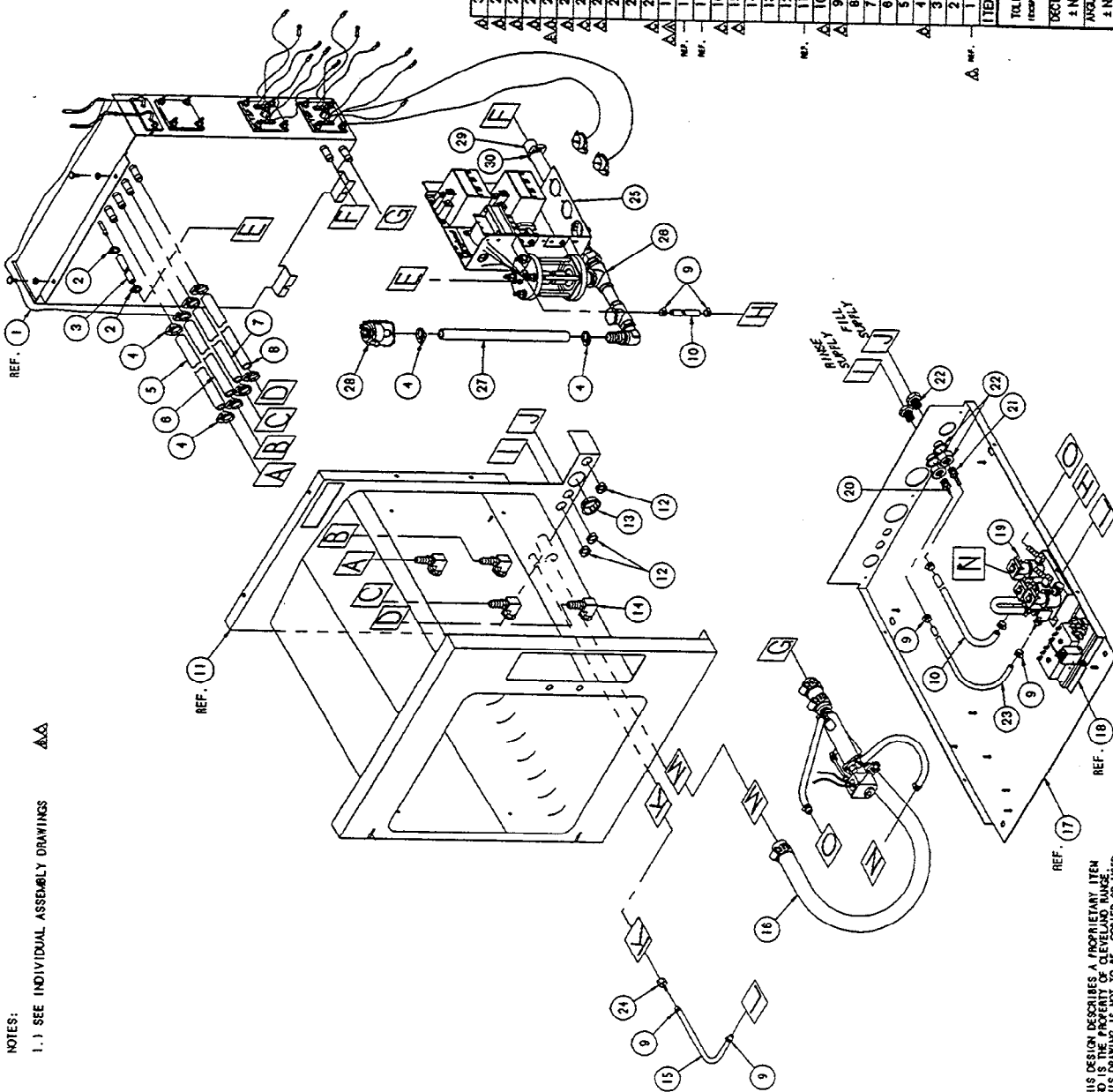
ITEM NO.	DESCRIPTION
101231	STEAM SHUT-OFF SWITCH
101232	GUARD
101233	WASHER
101234	SCREW
101235	WASHER
101236	NUT
101237	WASHER
101238	NUT
101239	WASHER
101240	NUT
101241	WASHER
101242	NUT
101243	WASHER
101244	NUT
101245	WASHER
101246	NUT
101247	WASHER
101248	NUT
101249	WASHER
101250	NUT
101251	WASHER
101252	NUT
101253	WASHER
101254	NUT
101255	WASHER
101256	NUT
101257	WASHER
101258	NUT
101259	WASHER
101260	NUT
101261	WASHER
101262	NUT
101263	WASHER
101264	NUT
101265	WASHER
101266	NUT
101267	WASHER
101268	NUT
101269	WASHER
101270	NUT
101271	WASHER
101272	NUT
101273	WASHER
101274	NUT
101275	WASHER
101276	NUT
101277	WASHER
101278	NUT
101279	WASHER
101280	NUT
101281	WASHER
101282	NUT
101283	WASHER
101284	NUT
101285	WASHER
101286	NUT
101287	WASHER
101288	NUT
101289	WASHER
101290	NUT
101291	WASHER
101292	NUT
101293	WASHER
101294	NUT
101295	WASHER
101296	NUT
101297	WASHER
101298	NUT
101299	WASHER
101300	NUT
101301	WASHER
101302	NUT
101303	WASHER
101304	NUT
101305	WASHER
101306	NUT
101307	WASHER
101308	NUT
101309	WASHER
101310	NUT
101311	WASHER
101312	NUT
101313	WASHER
101314	NUT
101315	WASHER
101316	NUT
101317	WASHER
101318	NUT
101319	WASHER
101320	NUT
101321	WASHER
101322	NUT
101323	WASHER
101324	NUT
101325	WASHER
101326	NUT
101327	WASHER
101328	NUT
101329	WASHER
101330	NUT
101331	WASHER
101332	NUT
101333	WASHER
101334	NUT
101335	WASHER
101336	NUT
101337	WASHER
101338	NUT
101339	WASHER
101340	NUT
101341	WASHER
101342	NUT
101343	WASHER
101344	NUT
101345	WASHER
101346	NUT
101347	WASHER
101348	NUT
101349	WASHER
101350	NUT
101351	WASHER
101352	NUT
101353	WASHER
101354	NUT
101355	WASHER
101356	NUT
101357	WASHER
101358	NUT
101359	WASHER
101360	NUT
101361	WASHER
101362	NUT
101363	WASHER
101364	NUT
101365	WASHER
101366	NUT
101367	WASHER
101368	NUT
101369	WASHER
101370	NUT
101371	WASHER
101372	NUT
101373	WASHER
101374	NUT
101375	WASHER
101376	NUT
101377	WASHER
101378	NUT
101379	WASHER
101380	NUT
101381	WASHER
101382	NUT
101383	WASHER
101384	NUT
101385	WASHER
101386	NUT
101387	WASHER
101388	NUT
101389	WASHER
101390	NUT
101391	WASHER
101392	NUT
101393	WASHER
101394	NUT
101395	WASHER
101396	NUT
101397	WASHER
101398	NUT
101399	WASHER
101400	NUT
101401	WASHER
101402	NUT
101403	WASHER
101404	NUT
101405	WASHER
101406	NUT
101407	WASHER
101408	NUT
101409	WASHER
101410	NUT
101411	WASHER
101412	NUT
101413	WASHER
101414	NUT
101415	WASHER
101416	NUT
101417	WASHER
101418	NUT
101419	WASHER
101420	NUT
101421	WASHER
101422	NUT
101423	WASHER
101424	NUT
101425	WASHER
101426	NUT
101427	WASHER
101428	NUT
101429	WASHER
101430	NUT
101431	WASHER
101432	NUT
101433	WASHER
101434	NUT
101435	WASHER
101436	NUT
101437	WASHER
101438	NUT
101439	WASHER
101440	NUT
101441	WASHER
101442	NUT
101443	WASHER
101444	NUT
101445	WASHER
101446	NUT
101447	WASHER
101448	NUT
101449	WASHER
101450	NUT
101451	WASHER
101452	NUT
101453	WASHER
101454	NUT
101455	WASHER
101456	NUT
101457	WASHER
101458	NUT
101459	WASHER
101460	NUT
101461	WASHER
101462	NUT
101463	WASHER
101464	NUT
101465	WASHER
101466	NUT
101467	WASHER
101468	NUT
101469	WASHER
101470	NUT
101471	WASHER
101472	NUT
101473	WASHER
101474	NUT
101475	WASHER
101476	NUT
101477	WASHER
101478	NUT
101479	WASHER
101480	NUT
101481	WASHER
101482	NUT
101483	WASHER
101484	NUT
101485	WASHER
101486	NUT
101487	WASHER
101488	NUT
101489	WASHER
101490	NUT
101491	WASHER
101492	NUT
101493	WASHER
101494	NUT
101495	WASHER
101496	NUT
101497	WASHER
101498	NUT
101499	WASHER
101500	NUT



THIS DESIGN DESCRIBES A PROPRIETARY ITEM AND IS THE PROPERTY OF CLEVELAND RANGE. THIS DRAWING IS NOT TO BE COPIED OR USED WITHOUT THE APPROVAL OF CLEVELAND RANGE.

NOTES:

1.1 SEE INDIVIDUAL ASSEMBLY DRAWINGS



LET.	REVISIONS	DATE	BY
A	RESTRAINT & BREATHER HOSE ASST. ADDED AND 100BT VALVE ASST. REVISED PER E.O. IC-2451 AND IC-2451 RI	08-25-93	PJD
B	ADDED NOTES 3 AND 4 PER E.O. IC-2451 RI	08-29-93	PJD
C	REVISED RESTRAINT & BREATHER HOSE ASST AND REVISED NOTES 2-4 AND ADDED 1/4 ID HOSES & FITTINGS AND 10032Z REPLACED 10498T AND 10632W REPLACED 106219 AND 106324 REPLACED 106384 PER E.O. IC-2492 RI	09-08-93	
D	REVISED GENERATOR AND ADDED 104200, 106221, 1058452000, 106726, 105847 & 10630100 AND 106416 WAS QTY. OF 8 PER E.O. IC-2502 RI	09-20-93	PJD
E	SEE E.O. IC-2502 RI	11-08-93	PJD

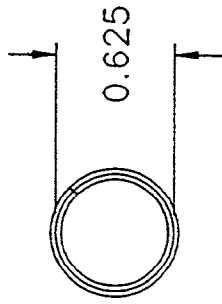
ITEM	QTY.	PART NO.	DESCRIPTION
Δ 30	2	105847	CLAMP, PLASTIC 1-1/8 HOSE
Δ 29	1	1060931100	HOSE, SILICONE 3/4 X 1.00 X 11 LG.
Δ 28	-	106428	PORT ASSY, DESCALER
Δ 27	1	1058452000	HOSE, NBRPBRNE 1/2 X 3/4 X 12 LG.
Δ 26	-	106487	FLOAT/DESCALER ASSY, SC 5.1
Δ 25	-	104200	COMPONENT PANEL ASSY, SC 5.1
Δ 24	1	106882	FITTING, HOSE 1/8 H X 1/8 EPT, STR
Δ 23	1	1066421000	HOSE, NI-80, 1/8 X 3/8 X 21" LG.
Δ 22	2	03641	COUPLING, BULKHEAD, 1/4 TFS, BRASS
Δ 21	1	104381	FITTING, HOSE 1/4 X 1/4 H, STR
Δ 20	1	106681	FITTING, HOSE 1/8 H X 1/4 MPT, BRASS
Δ 19	1	106122	VALVE ASSEMBLY, WATER INLET
Δ 18	-	---	PLATE, TDS & SBT, STEAMCRAFT
Δ 17	-	---	BASE, WELD ASSEMBLY
Δ 16	1	106524	VALVE ASSEMBLY, DRAIN
Δ 15	1	1066842000	HOSE, NI-80, 1/8 X 3/8 X 26" LG.
Δ 14	4	1062301	SPRAY NOZZLE ASSEMBLY, STEAMCRAFT
Δ 13	1	102581	HEYCO BUSHING, INSULATOR, 7/8"
Δ 12	3	02600	HEYCO BUSHING SB-875-11, INSULATOR
Δ 11	-	---	CAVITY, WELD ASSEMBLY
Δ 10	2	1058501000	HOSE, NI-80, 1/4 X 1/2 X 19 LG.
Δ 9	8	106526	HOSE CLAMP, METAL, 3/8 X 5/8 X 5/16
Δ 8	1	10584521000	HOSE, NBRPBRNE, 1/2 X 3/4 X 27" LG.
Δ 7	1	1058452000	HOSE, NBRPBRNE, 1/2 X 3/4 X 20" LG.
Δ 6	1	10584522000	HOSE, NBRPBRNE, 1/2 X 3/4 X 22" LG.
Δ 5	1	10584516000	HOSE, NBRPBRNE, 1/2 X 3/4 X 16" LG.
Δ 4	10	105848	HOSE CLAMP, NYLON, 3/4" OD HOSE
Δ 3	1	10584322000	HOSE, NBRPBRNE, 1/4 X 1/2 X 22" LG.
Δ 2	2	104383	HOSE CLAMP, NYLON, 1/2" OD HOSE
Δ 1	1	---	GENERATOR ASSEMBLY

TOLERANCES	UNLESS OTHERWISE SPECIFIED
DECIMAL	± 0.010
FRACTIONAL	± 0.005
ANGULAR	± 0.005
RADIUS	± 0.005

CLEVELAND RANGE INC.  
 1339 East 17th St. Cleveland, Ohio 44110-2894  
 DRAWN BY: [ ] DUTCHMAN: [ ] APPROVED BY: M.T.  
 TITLE: HOSE DETAIL  
 STEAMCRAFT 5.1  
 DATE: 05-18-93  
 DRAWING NO.: C - 1063572  
 REV. E

THIS DESIGN DESCRIBES A PROPRIETARY ITEM AND IS THE PROPERTY OF CLEVELAND RANGE. THIS DRAWING IS NOT TO BE COPIED OR USED WITHOUT THE APPROVAL OF CLEVELAND RANGE.

LET.	REVISIONS	DATE	BY



APPROVED  
 SOURCE: AEROFAST INC.  
 CAROL STREAM, ILL  
 PN

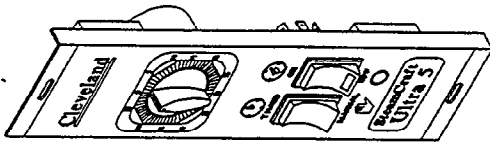
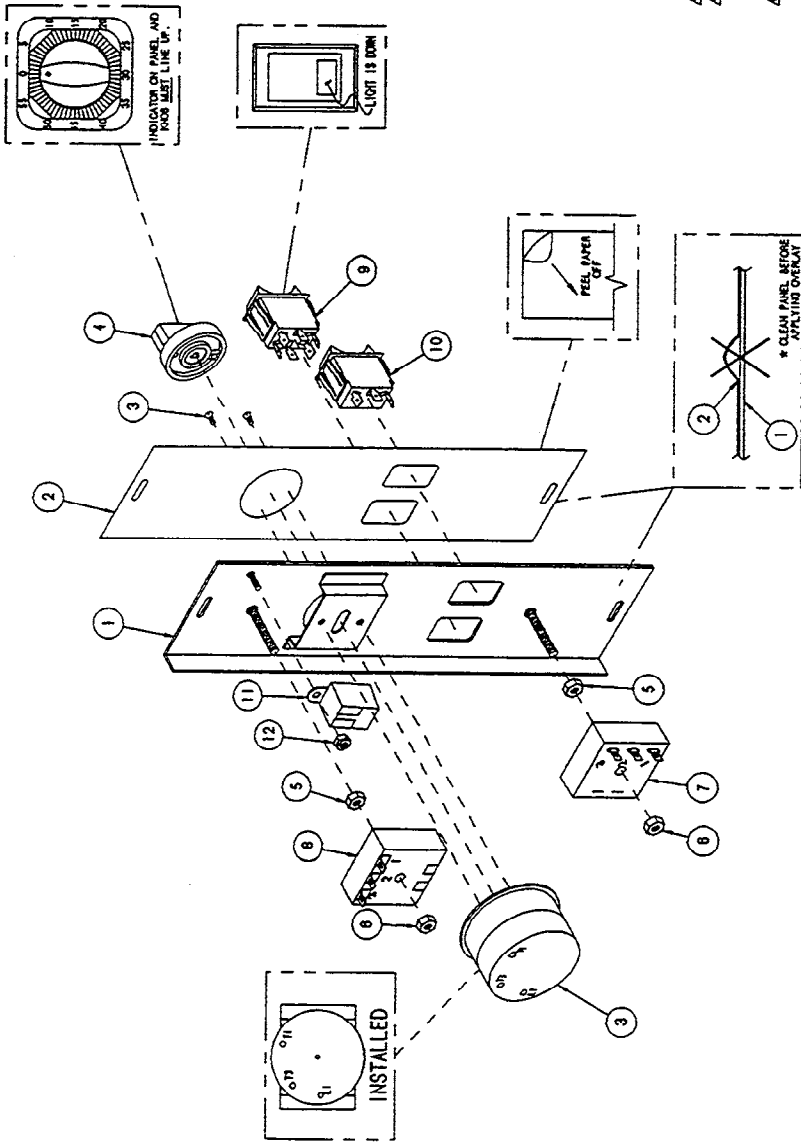
SPECIFICATIONS: MATERIAL: 304S/S OR BETTER  
 THICKNESS: SWG NO. 17 (.054)  
 CONSTRUCTION: 1-3/4 TURN

ITEM	QTY	PART NO.	DESCRIPTION
TOLERANCES (EXCEPT AS NOTED)			<b>CLEVELAND RANGE INC.</b> 1333 East 179th St. Cleveland, Ohio 44110-2574
DECIMAL $\pm 0.015$	SCALE 1=1	DRAWN BY JTW	APPROVED BY
ANGULAR $\pm 1^\circ$	TITLE RING, SNAP, 5/8" DIA., S/S		
AC	DATE 3/12/93	DRAWING NO. A-106429	REV -

THIS DESIGN DESCRIBES A PROPRIETARY ITEM AND IS THE PROPERTY OF CLEVELAND RANGE.  
 THIS DRAWING IS NOT TO BE COPIED OR USED WITHOUT THE APPROVAL OF CLEVELAND RANGE



LET.	REVISIONS	DATE	BY
A	REMOVED ITEMS 5, 6, 8 & 9 AND REVISED ITEM 1 PICTORIAL PER E.O. KC-1876 R1	02-06-91	PD
B	SEE E.O. KC-1957 R1	07-31-91	PD
C	P/N 20478 ROTATED 90° AND P/N 41350, 1 14872 MOVED FROM BOTTOM TO TOP OF P/N 104085 PER E.O. KC-2084 R3	08-25-90	PJF
D	P/N 108603 REPLACED P/N 103722 PER E.O. KC-2503	09-21-90	PD

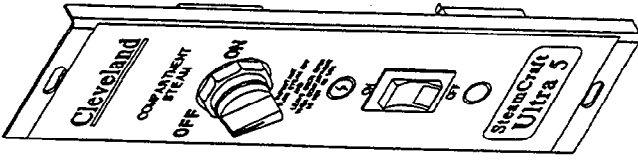
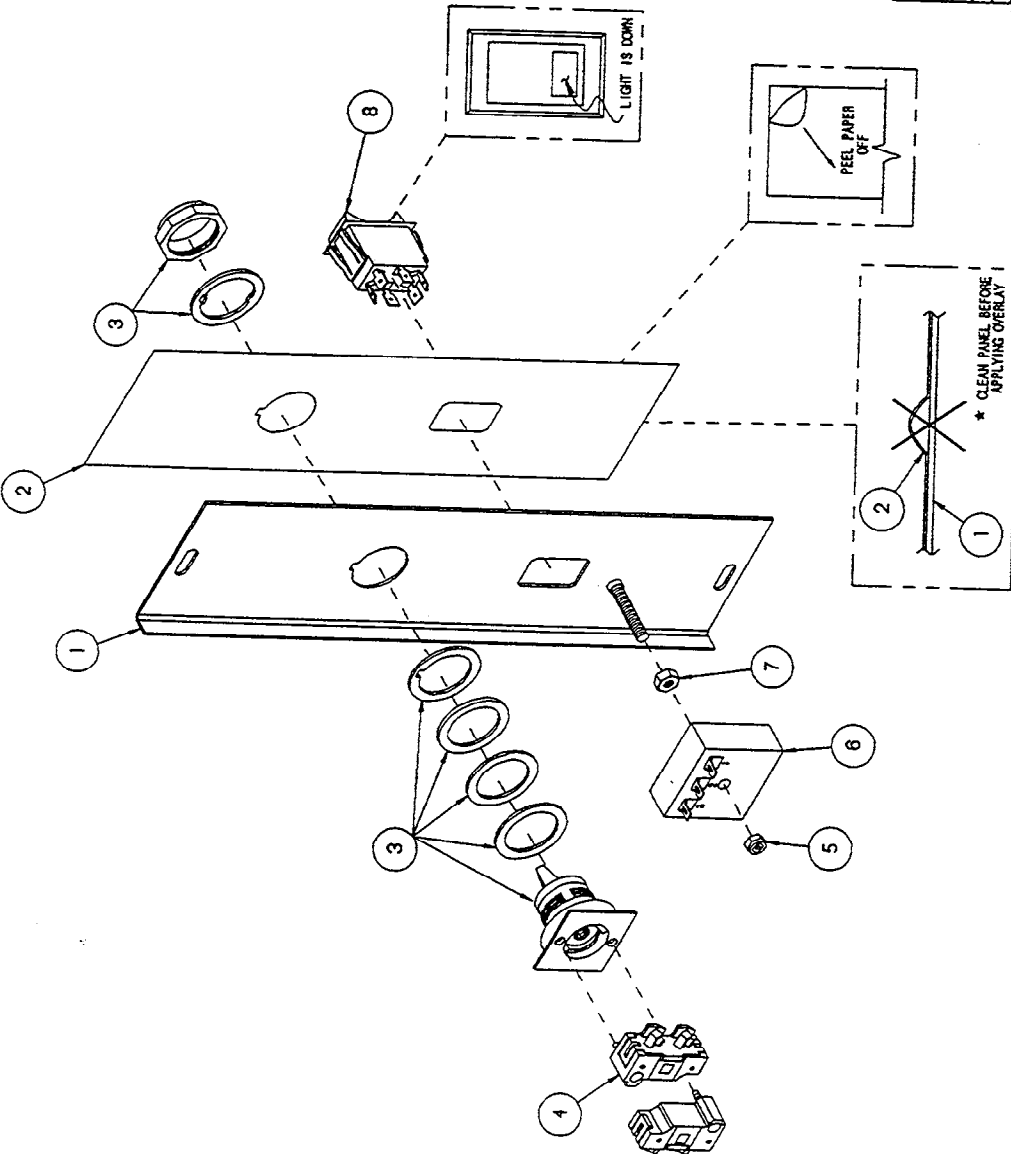


ITEM	QTY.	DESCRIPTION
12	1	NUT, HEX, LOCKING #10-32
11	1	BUZZER
10	1	SWITCH, ROCKER, SPDT, WHITE
9	1	SWITCH, ROCKER, DPDT W/ RED LIGHT
8	1	TIMER, 3-MINUTE
7	1	TIMER, 3-SECOND
6	2	NUT, HEX, ELASTIC LOCK 1/4-20
5	2	NUT, HEX, 1/4-20 BLACK OXIDE
4	1	TIMER KNOB
3	1	TIMER WITH MOUNTING SCREWS (2)
2	1	LABEL, CONTROL, MECHANICAL, ULTRA 5
1	1	CONTROL PANEL WITH STUDS
ITEM QTY. PART NO. DESCRIPTION		
TOLERANCES UNLESS SHOWN		
DECIMAL FRACTIONS		
SCALE 1/2"		
DRAWN BY R. RIOS		
APPROVED BY		
TITLE CONTROL PANEL ASS'Y., MECHANICAL STEAMCRAFT 5.1 ULTRA		
DATE 07-09-90		
DRAWING NO. C - 10419		
REV. D		

CLEVELAND RANGE INC.  
1500 East 179th St., Cleveland, Ohio 44110-2574

THIS DESIGN DESCRIBES A PROPRIETARY ITEM AND IS THE PROPERTY OF CLEVELAND RANGE. THIS DRAWING IS NOT TO BE COPIED OR USED WITHOUT THE APPROVAL OF CLEVELAND RANGE.

LET.	REVISIONS	DATE	BY
A	P/N 106805 REPLACED P/N 106298 PER E.O. 12812	09-21-93	PJD



ITEM	QTY.	PART NO.	DESCRIPTION
8	1	19993	SWITCH, ROCKER, DPDT, W/ RED LIGHT
7	1	14617	NUT, HEX 1/4-20, STEEL
6	1	20478	TIMER, SOLID STATE INTERVAL 3 MINUTE
5	1	101873	NUT, HEX 1/4-20 ELASTIC LOCK
4	2	102533	BLOCK, CONTACT
3	1	102534	SWITCH, SELECTOR
2	1	106805	PANEL, CONTROL PANEL, ON/OFF, ULTRA 5
1	1	106803	PANEL, WELDMENT, ON/OFF CONTROL, SS 317S.1

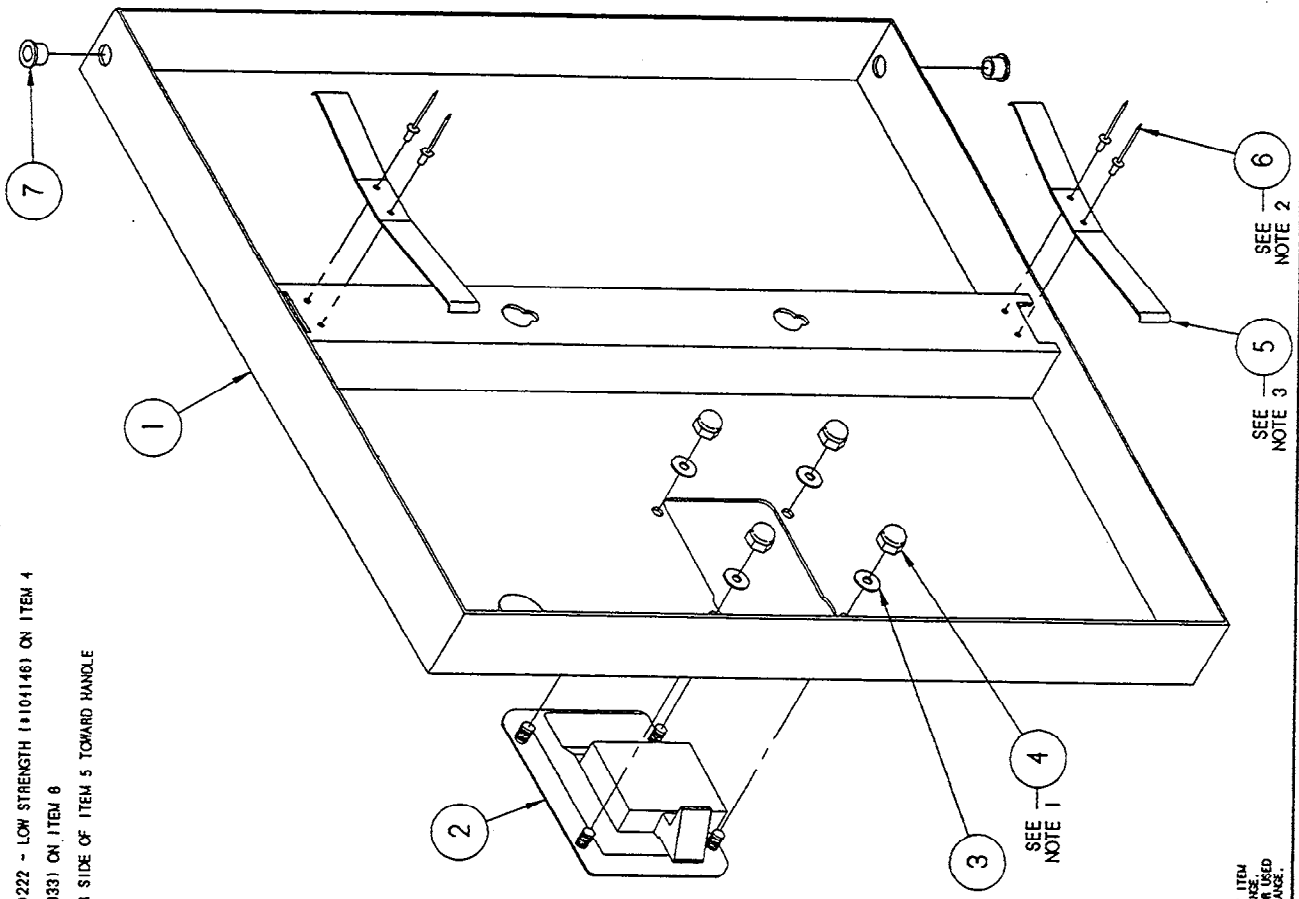
TOLERANCES (UNLESS OTHERWISE SPECIFIED)	
DECIMAL	FRACTIONAL
± .030	± 1/16"
SCALE 5/8" = 1"	
DRAWN BY AUTOMAN APPROVED BY	
TITLE CONTROL PANEL ASS'Y., ON/OFF STEAMCRAFT 5.1 ULTRA	
DATE 01-15-93	REV. A
CK	DRAWING NO. C - 106305

CLEVELAND RANGE INC.  
1363 East 178th St., Cleveland, Ohio 44110-2574

THIS DESIGN DESCRIBES A PROPRIETARY ITEM OF CLEVELAND RANGE. THIS DRAWING IS TO BE USED WITHOUT THE APPROVAL OF CLEVELAND RANGE.

LET.	REVISIONS	DATE	BY
A	P/S 103901 & 104987 ADDED. P/202201, C-2411, RECORDING CURVEY PER E.O. RC-2411, R2	04-30-93	P.D.
B	P/S 103901 & 104987 REF. ONLY PER E.O. RC-2411 R3	04-05-93	P.D.
C	P/S 103901 & 104987 REMOVED PER E.O. RC-2411 R5	12-13-93	P.D.

NOTES : 1.1 USE LOCTITE #222 - LOW STRENGTH (1010146) ON ITEM 4  
 2.1 USE RTV (#00833) ON ITEM 6  
 3.1 ORIENT LONGER SIDE OF ITEM 5 TOWARD HANDLE



ITEM	QTY.	PART NO.	DESCRIPTION
7	2	103841	BUSHING, BRONZE
6	4	19357	RIVET, 1/8" DIA, FLUSH BREAK, S/S
5	2	102228	SPRING, DOOR
4	4	14879	NUT, #10-24, ACORN, S/S
3	4	101855	WASHER, #10 FLAT, S/S
2	1	103843	LATCH, DOOR - PADDLE TYPE
1	1	1042012	DOOR, OUTER WELD ASST, W/SS TM, S/G S.I, H.L.

TOLEANCES (EXCEPT AS NOTED)	DECIMAL	± IN/A
ANGULAR	1 IN/A	
SCALE	5/8"=1"	
TITLE	JTW	APPROVED BY
DATE	02-04-93	REV.
CHECK	CK	

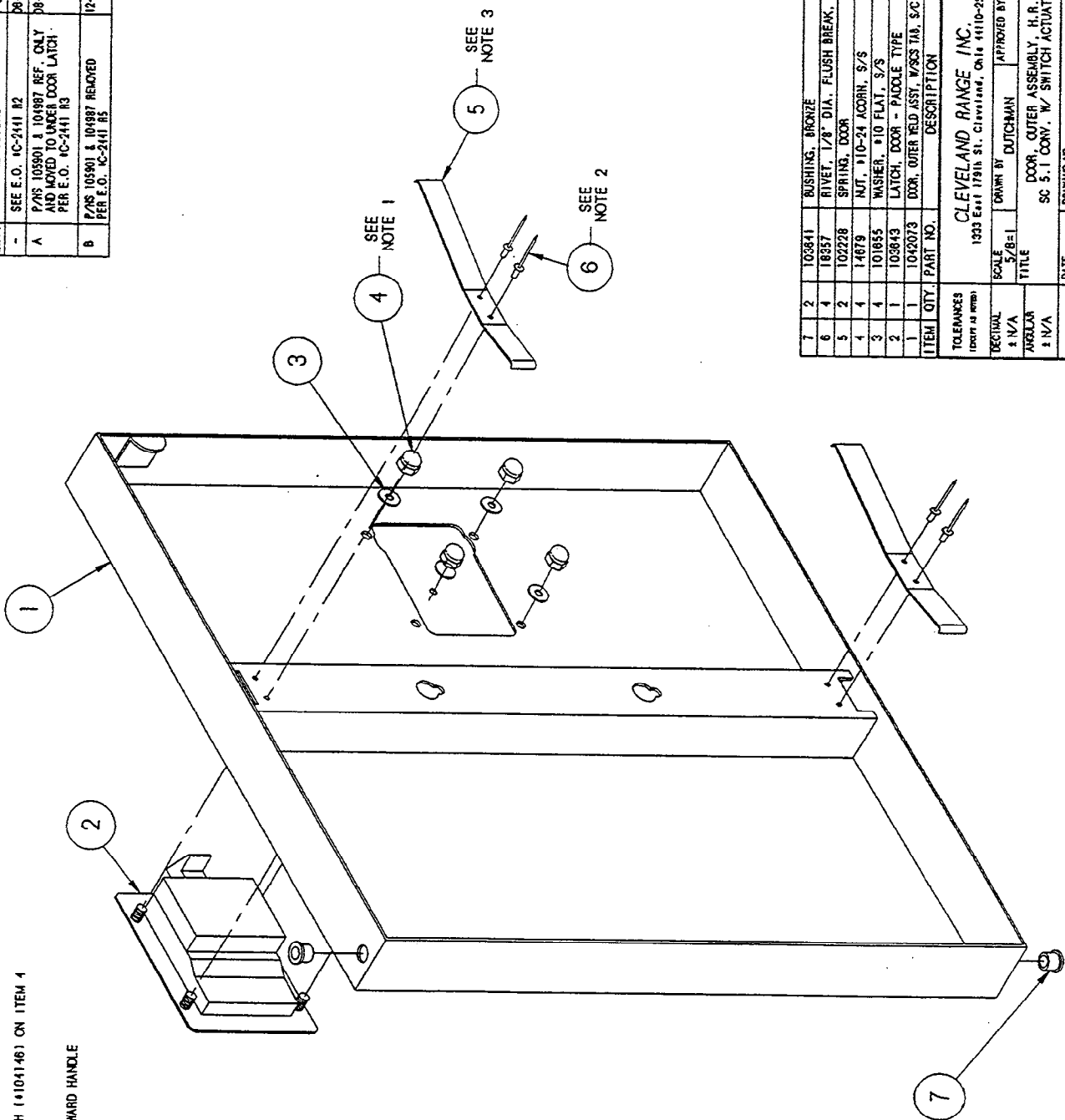
  

CLEVELAND RANGE, INC. 1033 East 17th St, Cleveland, Ohio 44116-2574	
DRAWN BY	JTW
APPROVED BY	[Signature]
TITLE	DOOR, OUTER ASSEMBLY, H.L.
SC. 5.1 CONV. W/ SWITCH ACTUATOR	
DATE	02-04-93
DRAWING NO.	C - 1042062
REV.	C

THIS DESIGN DESCRIBES A PROVISIONARY ITEM AND IS THE PROPERTY OF CLEVELAND RANGE. THIS DRAWING IS NOT TO BE COPIED OR USED WITHOUT THE APPROVAL OF CLEVELAND RANGE.



LET.	REVISIONS	DATE	BY
-	SEE E.O. 10411 R2	08-28-93	PJD
A	P/N'S 105901 & 104987 REF. ONLY AND MOVED TO UNDER DOOR LATCH PER E.O. 10411 R3	08-05-93	PJD
B	P/N'S 105901 & 104987 REMOVED PER E.O. 10411 R5	12-13-93	JJD



- NOTES:
- 1.1 USE LOCKTITE #222 - LOW STRENGTH (#104146) ON ITEM 4
  - 2.1 USE RTV (#100933) ON ITEM 6
  - 3.1 ORIENT LONGER SIDE OF ITEM 5 TOWARD HANDLE

ITEM	QTY.	PART NO.	DESCRIPTION
7	2	103841	BUSHING, BRONZE
6	4	18857	RIVET, 1/8" DIA., FLUSH BREAK, S/S
5	2	102228	SPRING, DOOR
4	1	14879	NUT, #10-24 ACORN, S/S
3	4	101855	WASHER, #10 FLAT, S/S
2	1	103843	LATCH, DOOR - PADLOCK TYPE
1	1	104073	DOOR, OUTER HLD. ASSY, W/SES TAB, S/C S.I., H.R.

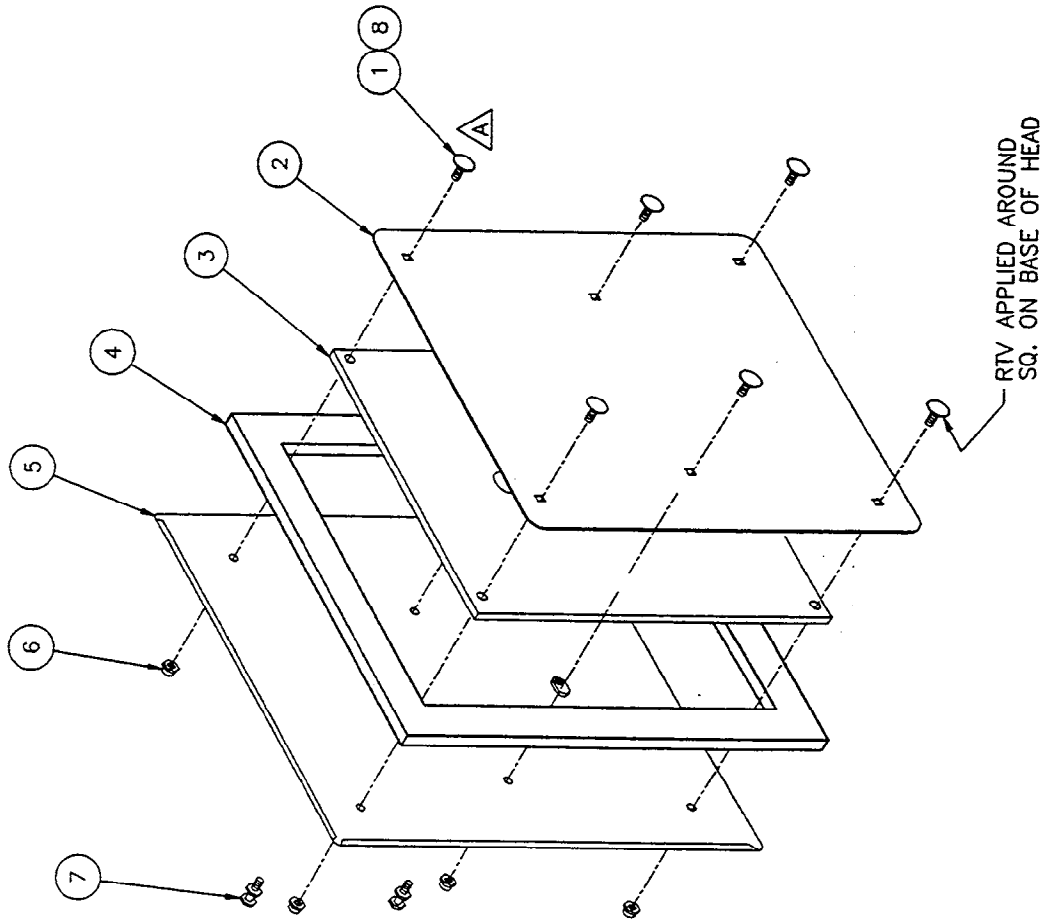
TOLERANCES (UNLESS OTHERWISE SPECIFIED)	
DECIMAL	± 1/16"
FRACTIONAL	± 1/32"
ANGLE	± 1/4°
CK	DATE 08-30-93

CLEVELAND RANGE, INC. 1333 East 179th St., Cleveland, Ohio 44110-2371	
SCALE	5/8=1
TITLE	DOOR, OUTER ASSEMBLY, H.R. SC 5.1 COV. W/ SWITCH ACTUATOR
DRAWN BY	DUTCHMAN
APPROVED BY	
DATE	08-30-93
DRAWING NO.	C - 1042063
REV.	8

THIS DESIGN DESCRIBES A PROPRIETARY ITEM AND IS A TRADE SECRET OF CLEVELAND RANGE. THIS DRAWING IS NOT TO BE COPIED OR USED WITHOUT THE APPROVAL OF CLEVELAND RANGE.

LET.	REVISIONS	DATE	BY
A	ADDED ITEMS 1 & 8, ITEM 2 WAS 104205	6/25/91	JPB



ITEM	QTY	PART NO.	DESCRIPTION
8	A/R	09932	SEALANT, CLEAR RV
7	2	66508	STUD, DOOR MOUNTING, INNER
6	6	14665	NUT, HEX LOCK, 1/4-20 S/S
5	1	104204	DOOR WELDMENT, INNER, S/C 5.1
4	1	104026	GASKET, DOOR S/C 5.1
3	1	104022	PLATE, INNER GASKET RETAINER, S/C 5.1
2	1	104021	PLATE, GASKET RETAINER, S/C 5.1
1	6	104719	BOLT, CARRIAGE 1/4-20 X 1.000"

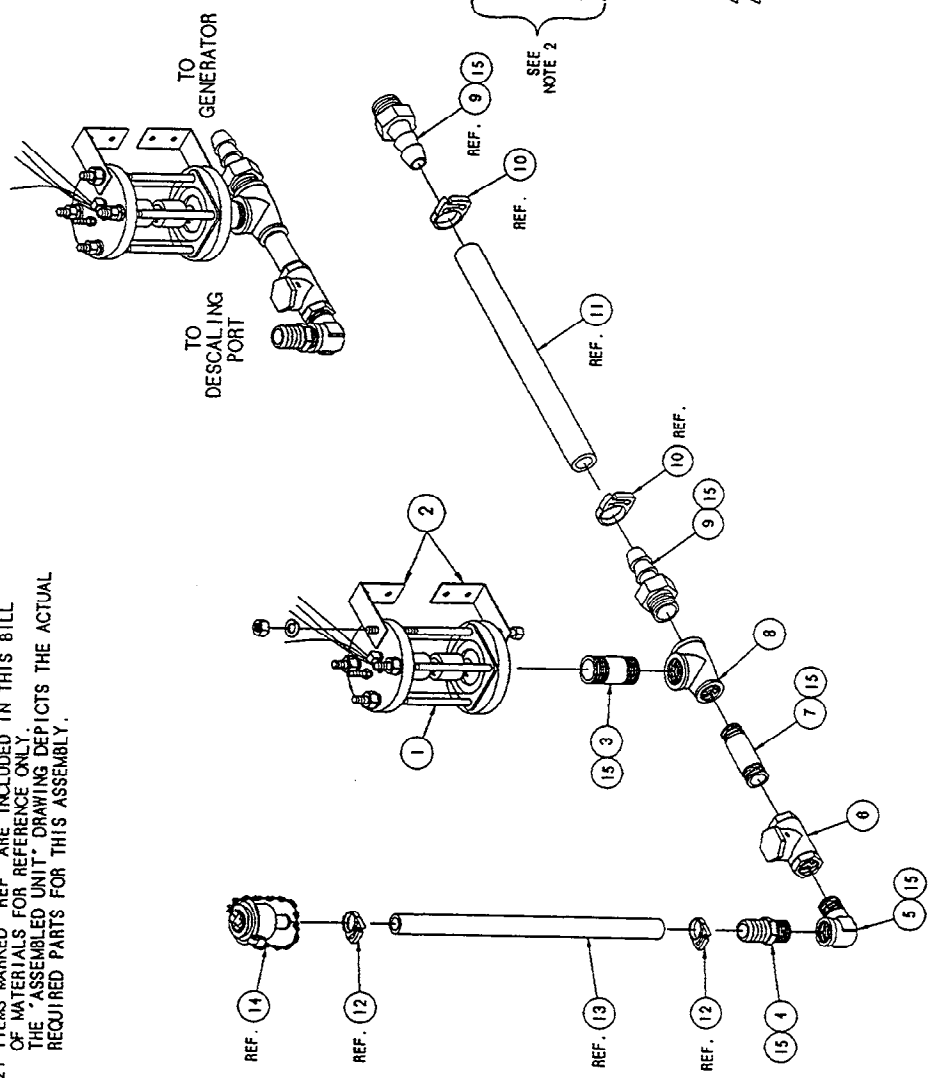
<b>CLEVELAND RANGE INC.</b> 1333 East 179th St. Cleveland, Ohio 44110-2574		DRAWN BY JPB	APPROVED BY
TOLERANCES (COPY AS NOTED)	SCALE NONE	TITLE DOOR, INNER ASSY. STEAMCRAFT 5.1	
ORIGINAL $\pm$ -	DATE 6/25/91		
ANGULAR $\pm 1^\circ$	DRAWING NO. B-104202		
AC	REV A		

THIS DESIGN DESCRIBES A PROPRIETARY ITEM AND IS THE PROPERTY OF CLEVELAND RANGE.  
 THIS DRAWING IS NOT TO BE COPIED OR USED WITHOUT THE APPROVAL OF CLEVELAND RANGE.

LET.	REVISIONS	DATE	BY
A	SEE E.O. #C-2631	08-02-94	PJD

ASSEMBLED UNIT

NOTE:  
 1) SEE DRAWING 1063572 FOR HOSE LOCATIONS.  
 2) ITEMS MARKED "REF." ARE INCLUDED IN THIS BILL OF MATERIALS FOR REFERENCE ONLY. THE "ASSEMBLED UNIT" DRAWING DEPICTS THE ACTUAL REQUIRED PARTS FOR THIS ASSEMBLY.



ITEM	QTY.	A/R	DESCRIPTION
15	1	00934	SEALANT, RECTORSSEAL
14	1	106428	PORT ASSEMBLY, DESCALER
13	1	1058451200	HOSE, NOMPURE, 1/2" ID X 3/4" OD X 12' LG
12	2	105848	CLAMP, PLASTIC, 3/4" OD HOSE
11	1	1060931100	HOSE, SILICONE, 3/4" ID X 1" OD X 11' LG
10	2	105847	CLAMP, PLASTIC, 1-1/8" HOSE
9	2	06240	FITTING, 3/4" H X 3/4" MPT
8	1	20208	TEE, 3/4" X 1/2" X 3/4", BRASS
7	1	14331	NIPPLE, 1/2" X 2-1/2", BRASS
6	1	108156	CHECK VALVE, 1/2" SWING W/ RUBBER SEAT
5	1	05253	ELBOW, STREET, 90° X 1/2", BRASS
4	1	06237	FITTING, 1/2" X 1/2" MPT, BRASS
3	1	14431	NIPPLE, 3/4" X 2", BRASS
2	2	106676	BRACKET, TOP/BOT. FLOAT SUPPORT
1	1	105877	FLOAT, ASSEMBLY, STEAMCRAFT

TOLERANCES (EXCEPT AS NOTED)	
DECIMAL	± .030
ANGULAR	± 1°
DATE	04-15-93
CK	DRAWING NO. B - 106467
REV. A	

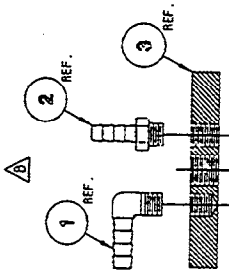
CLEVELAND RANGE INC.  
 1333 East 179th St. Cleveland, Ohio 44110-2574

SCALE 1/4"  
 DRAWN BY DUTCHMAN  
 APPROVED BY

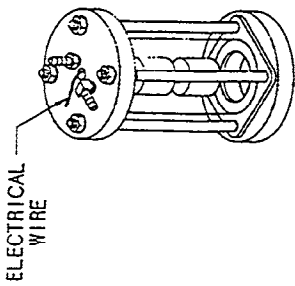
TITLE  
 FLOAT AND DESCALER ASSEMBLY  
 STEAMCRAFT 5.1, ELECTRIC

THIS DESIGN DESCRIBES A PROPRIETARY ITEM AND IS THE PROPERTY OF CLEVELAND RANGE. THIS DRAWING IS NOT TO BE COPIED OR USED WITHOUT THE APPROVAL OF CLEVELAND RANGE.

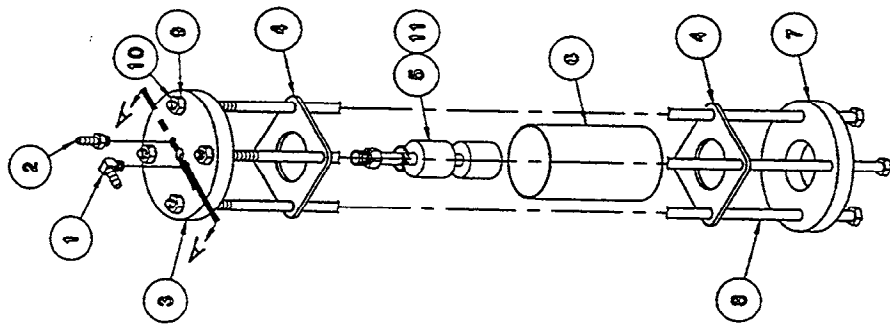
LET.	REVISIONS	DATE	BY
A	CORRECTED P/N 105787	7-30-92	SM
B	ROTATED 90° P/NS 105787 & 104380 PER EO #C-2304	10-10-92	PD
C	THIS ASSEMBLY REPLACES P/N 104091 ON SC 3.1, 5.1 ELECT. & SC 10 ELECT. PER EO #C-2277 R3	02-02-93	PD



DETAIL A-A  
SCALE: 1/2=1



ASSEMBLED VIEW  
SCALE: 1/4=1



EXPLODED ASSEMBLY  
SCALE: 1/4=1

REFERENCE:  
260AHM 5 OF 5

ITEM	QTY.	PART NO.	DESCRIPTION
11	A/R	00934	SEALANT, RECTORSEAL
10	4	14618	NUT, HEX HEAD, 1/4-20, S/S
9	4	23105	WASHER, SPLIT LOCK, 1/4, S/S
8	4	104278	SCREW, HEX HEAD, 1/4-20 x 5.5, S/S
7	1	104040	CAP, FLOAT BOTTOM
6	1	1040190388	TUBE, POLYSULFONE, 2 x .125 x 3.875
5	1	103728	SWITCH ASSEMBLY, FLOAT
4	2	104041	GASKET, FLOAT ASSEMBLY
3	1	104039	TOP, FLOAT, STEAMCRAFT
2	1	104380	FITTING, HOSE BARB, 1/4 H x 1/8 MPT
1	1	105787	FITTING, HOSE BARB, 90°, 1/4 H x 1/8 MPT

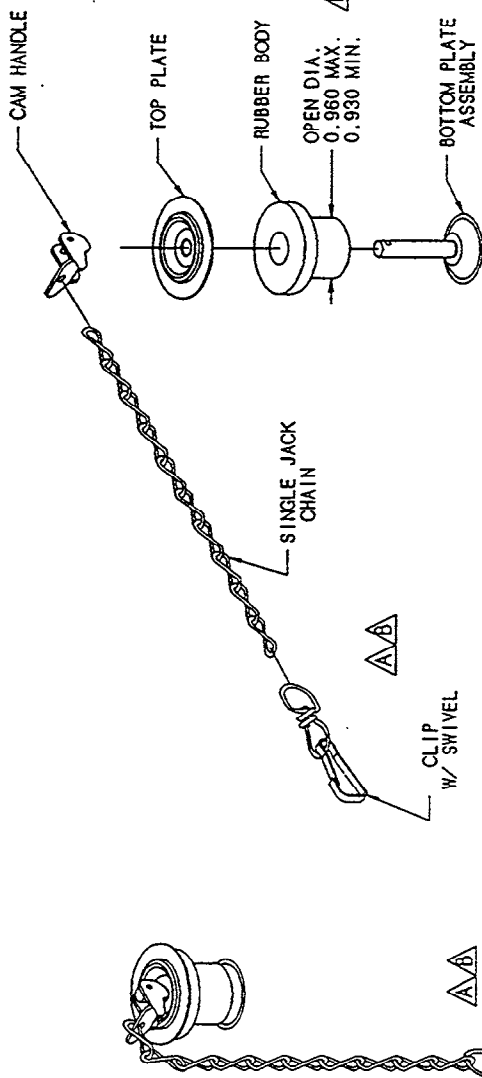
TOLERANCES (EXCEPT AS NOTED)	SCALE AS SHOWN	TITLE	DATE	REV.
DECIMAL ± N/A	AS SHOWN	△	05-28-92	B - 105877
ANGULAR ± N/A		FLOAT ASSEMBLY, STEAMCRAFT 10 ELECTRIC, 3.1 AND 5.1		C

CLEVELAND RANGE INC.  
1333 East 179th St. Cleveland, Ohio 44110-2374

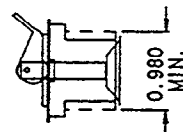
DRAWN BY S. MILEWSKI  
APPROVED BY

THIS DESIGN DESCRIBES A PROPRIETARY ITEM AND IS THE PROPERTY OF CLEVELAND RANGE. THIS DRAWING IS NOT TO BE COPIED OR USED WITHOUT THE APPROVAL OF CLEVELAND RANGE.

LET.	REVISIONS	DATE	BY
A	CLIP W/ SWIVEL OASLETED PER E.O. #C-2385	03-18-93	PJD
B	VENDOR P/N WAS 55900 CLIP & TOLERANCES ADDED PER E.O. #C-2385 R2	10-13-91	PJD



EXPLODED VIEW



COMPRESSED RUBBER BODY

SPECIFICATIONS:

PLUG ASSEMBLY

1. CAM HANDLE - BRASS W/ STA INLESS STEEL RIVET (304 SS OPTIONAL)
2. TOP PLATE - 304 SS
3. RUBBER BODY - TO FIT 31/32" HOLE - NEOPRENE (SILICONE OPTIONAL)
4. BOTTOM PLATE ASSEMBLY - 304 SS W/ 430 SS STUD (304 SS STUD OPTIONAL)
5. CHAIN - SINGLE JACK CHAIN - NO 16 - 304 SS - 5.50' (9-10 LINKS)
6. CLIP W/ SWIVEL - SPRING STEEL NICKEL PLATED

ASSEMBLED VIEW

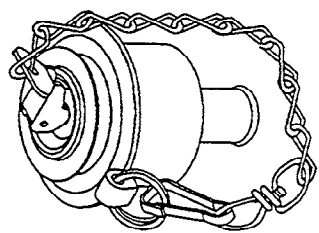
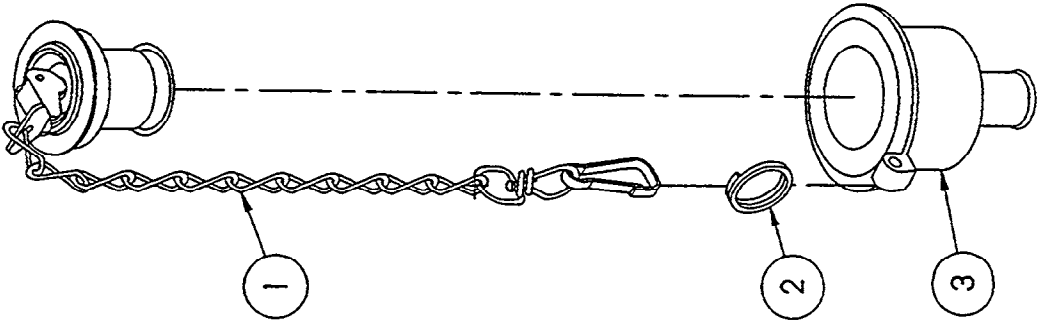
VENDOR : SHAW AERO DEVELOPMENT  
P.O. BOX 8657  
NAPLES, FLORIDA 33941

VENDOR P/N : 55960

ITEM	QTY.	PART NO.	DESCRIPTION
TOLERANCES (unless as noted)			
DECIMAL	± .010	SCALE	1" = 1"
ANGULAR	± 1°	DRAWN BY	OUTCHMAN
OK	DATE	01-22-93	APPROVED BY
CLEVELAND RANGE INC. 1033 East 179th St. Cleveland, Ohio 44110-2514			
TITLE PLUG, EXPANDABLE, W/ CHAIN DESCALER			
REP.	B	DRAWING NO.	C - 1C

THIS DESIGN DESCRIBES A PROPRIETARY ITEM AND IS THE PROPERTY OF CLEVELAND RANGE. THIS DRAWING IS NOT TO BE COPIED OR USED WITHOUT THE APPROVAL OF CLEVELAND RANGE.

LET.	REVISIONS	DATE	BY
A	PICTORIAL UPDATE OF P/N 106160 PER E.O. 12812	10-13-94	PJD



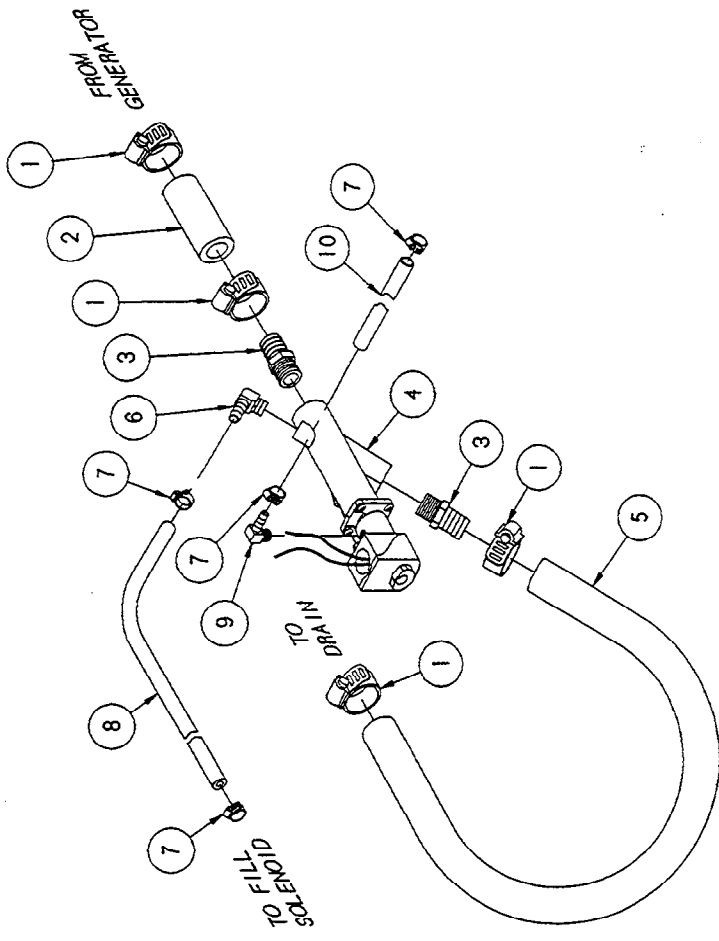
ASSEMBLED VIEW

ITEM	QTY.	PART NO.	DESCRIPTION
3	1	106104	FITTING, DESCALING PORT
2	1	106429	RING, SNAP, 5/8 DIA. S/S
1	1	106160	PLUG, EXPANDABLE W/ CHAIN

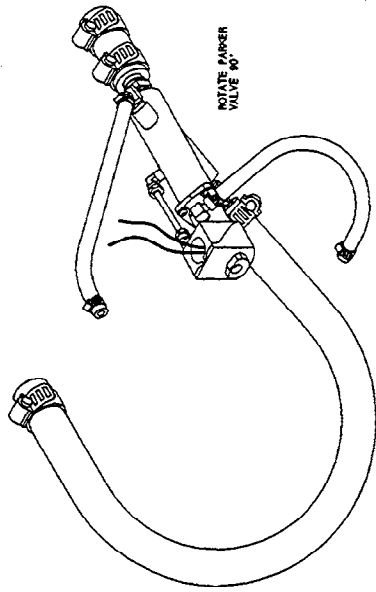
  

TOLERANCES (EXCEPT AS NOTED)		CLEVELAND RANGE INC. 1333 East 179th St. Cleveland, Ohio 44110-2574	
DECIMAL	± .030	SCALE	1" = 1"
ANGULAR	± N/A	DRAWN BY	DUTCHMAN
		TITLE	PORT ASSEMBLY, DESCALER
CK		DATE	03-18-93
		DRAWING NO.	B - 106428
		REV.	A

THIS DESIGN DESCRIBES A PROPRIETARY ITEM AND IS THE PROPERTY OF CLEVELAND RANGE. THIS DRAWING IS NOT TO BE COPIED OR USED WITHOUT THE APPROVAL OF CLEVELAND RANGE.



ASSEMBLED UNIT



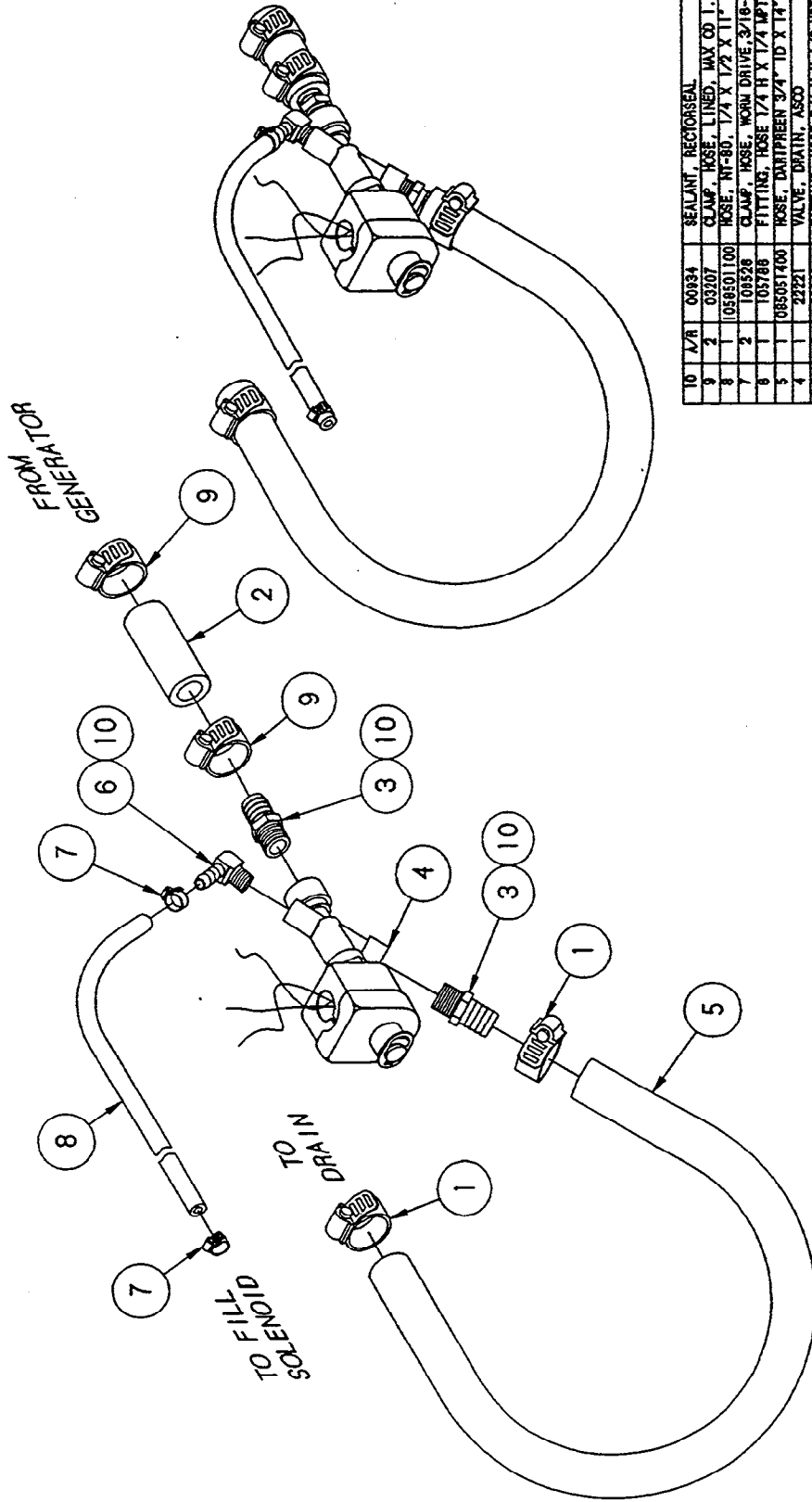
ITEM	QTY	PART NO.	DESCRIPTION
10	1	1058500500	HOSE, NT-80, 1/4 X 1/2 X 8' LG.
9	1	105787	FITTING, HOSE 1/4 H X 1/8 MPT, 90°
8	1	1058500900	HOSE, NT-80, 1/4 X 1/2 X 9' LG.
7	4	108219	CLAMP, METAL, WORM DRIVE
6	1	105786	FITTING, HOSE 1/4 H X 1/4 MPT, 90°
5	1	085051400	HOSE, DARI-PREEN 3/4" ID X 14' LG.
4	1	22244	VALVE, DRAIN, PARKER
3	2	08240	FITTING, HOSE 3/4 H X 3/4 NPT, STR
2	1	085050300	HOSE, DARI-PREEN 3/4" ID X 3' LG.
1	4	03207	CLAMP, METAL, WORM DRIVE

TOLERANCES UNLESS NOTED		CLEVELAND RANGE INC.	
DECIMAL		1333 East 179th St. Cleveland, Ohio 44116-2574	
± 1/4"	± 1/8"	SCALE	3/8"=1"
± 1/4"	± 1/8"	DRAWN BY	DUTCHMAN
± 1/4"	± 1/8"	TITLE	VALVE ASSEMBLY, DRAIN STEAMCRAFT 5.i. GAS
CK		DATE	05-12-93
		DRAWING NO.	C - 106524
		REV.	-

THIS DESIGN DESCRIBES A PROPRIETARY ITEM AND IS THE PROPERTY OF CLEVELAND RANGE. THIS DRAWING IS NOT TO BE COPIED OR USED WITHOUT THE APPROVAL OF CLEVELAND RANGE.

LET.	REVISIONS	DATE	BY
A	ADDED NOTE FOR ASSEMBLY.	06/13/76	NT

NOTE: 1) Rotate solenoid valve 45° clockwise for left hinging units. Rotate solenoid valve 45° counter-clockwise for right hinging units.



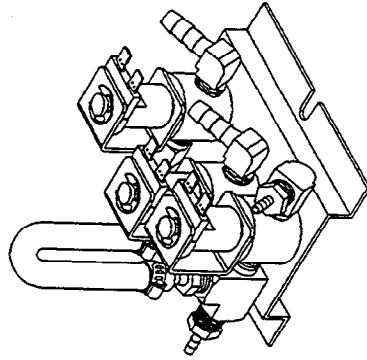
ID	A/R	QTY.	PART NO.	DESCRIPTION
9	2		03207	SEALANT, RECTORSEAL
8	1		056501100	CLAMP, HOSE, LINED, MAX OD 1.125"
7	2		104528	HOSE, NT-80, 1/4" X 1/2" X 11" LG.
6	1		103788	CLAMP, HOSE, WORN DRIVE, 3/18-3/16
5	1		085051400	FITTING, HOSE 1/4" H X 1/4" IPT, 90°
4	1		23221	HOSE, DARTPHREN 3/4" ID X 14" LG.
3	2		08241	VALVE, DRAIN, ASCO
2	1		085110300	FITTING, HOSE 3/4" H X 1/2" IPT, STR
1	2		03204	HOSE, SILGRADE, 3/4" ID X 3' LG.
				CLAMP, HOSE, WORN DRIVE, 3/4"
ITEM QTY. PART NO. DESCRIPTION				
TOLERANCES UNLESS SHOWN				
DECIMAL ± N/A				
ANGLES ± N/A				
CK DATE 02-12-99 DRAWING NO. C - 106384 REV. A				

THIS DESIGN DESCRIBES A PROPRIETARY ITEM OF CLEVELAND RANGE INC. THIS DRAWING IS NOT TO BE COPIED OR USED WITHOUT THE APPROVAL OF CLEVELAND RANGE.

CLEVELAND RANGE INC.  
 1333 East 1731st St., Cleveland, Ohio 44116-2574  
 DRAWN BY DUTCHMAN APPROVED BY  
 TITLE VALVE ASSEMBLY, DRAIN STEAMCRAFT 3.1 AND 5.1



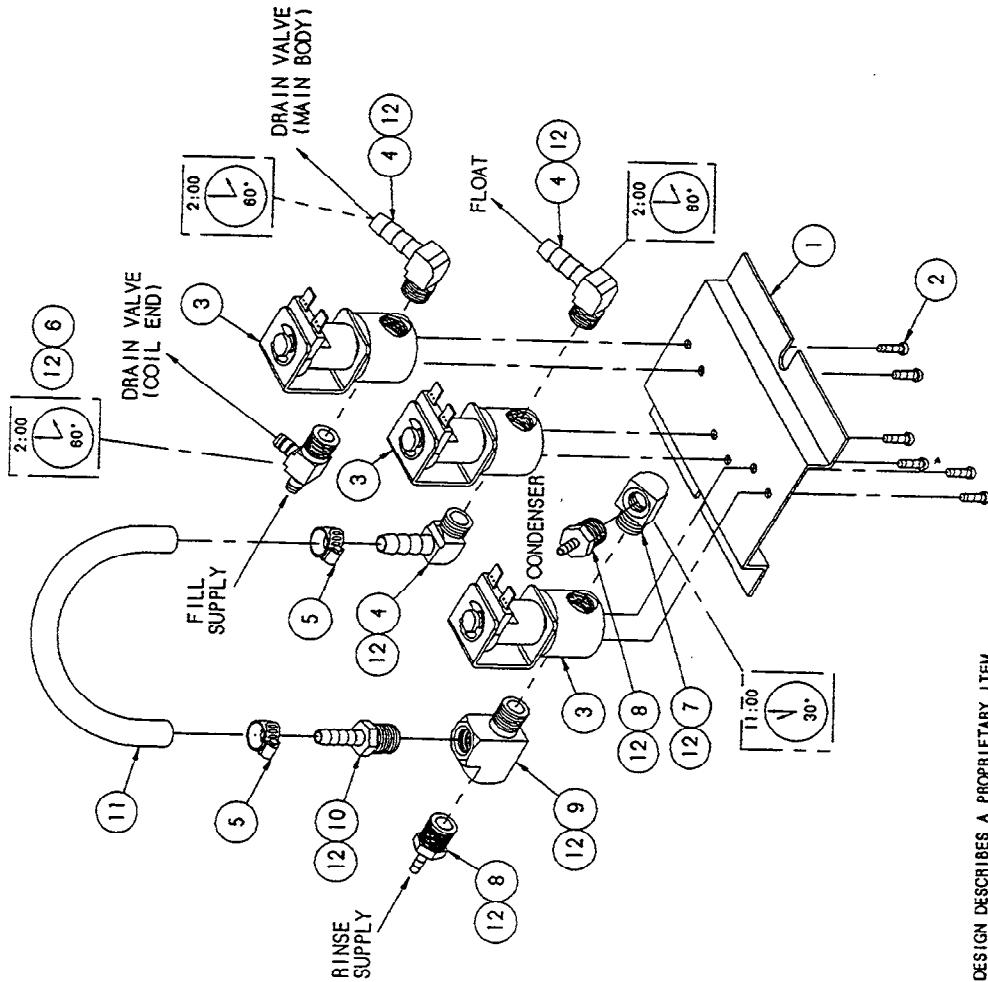
LET.	REVISIONS	DATE	BY
A	106522 REPLACED 104087, 106526 REPLACED 106219, ADDED NEW PARTS & NEW TUBING LAYOUT PER E.O. 12-2492	08-23-93	PJD



12	A/R	00934	SEALANT, RECTORSAL
11	1	1058500600	TUBING, NT-80, 1/4" X 6'
10	1	104381	FITTING, HOSE, 1/4 H X 1/4 MPT, STR.
9	1	106863	FITTING, WALE RUN, 1/4 MPT X 1/4 MPT
8	2	106661	FITTING, HOSE, 1/8 H X 1/4 MPT, STR.
7	1	05235	ELBOW, STREET 1/4 X 90°, BRASS
6	1	106588	FITTING, TEE, 1/4 H X 1/4 MPT X 1/4 H
5	2	106526	CLAMP, HOSE, 3/8 X 5/8 X 5/16 W
4	3	105786	FITTING, HOSE, 1/4 H X 1/4 MPT, 90°
3	3	22218	SOLENOID VALVE
2	6	101872	SCREW, 18-32 X 1/4 THD. CUT
1	1	104284	BRACKET, MOUNTING
ITEM QTY.	PART NO.	DESCRIPTION	

TOLERANCES (EXCEPT AS NOTED)			
DECIMAL	± N/A	SCALE	1/2" = 1"
ANGULAR	± 1°	DRAWN BY	ARB
CK	08-24-93	APPROVED BY	
<b>CLEVELAND RANGE INC.</b> 1333 East 179th St. Cleveland, Ohio 44110-2574			
TITLE		VALVE ASSY, WATER INLET	
DRAWING NO.		B - 106522	
REV.	A	DATE	08-24-93

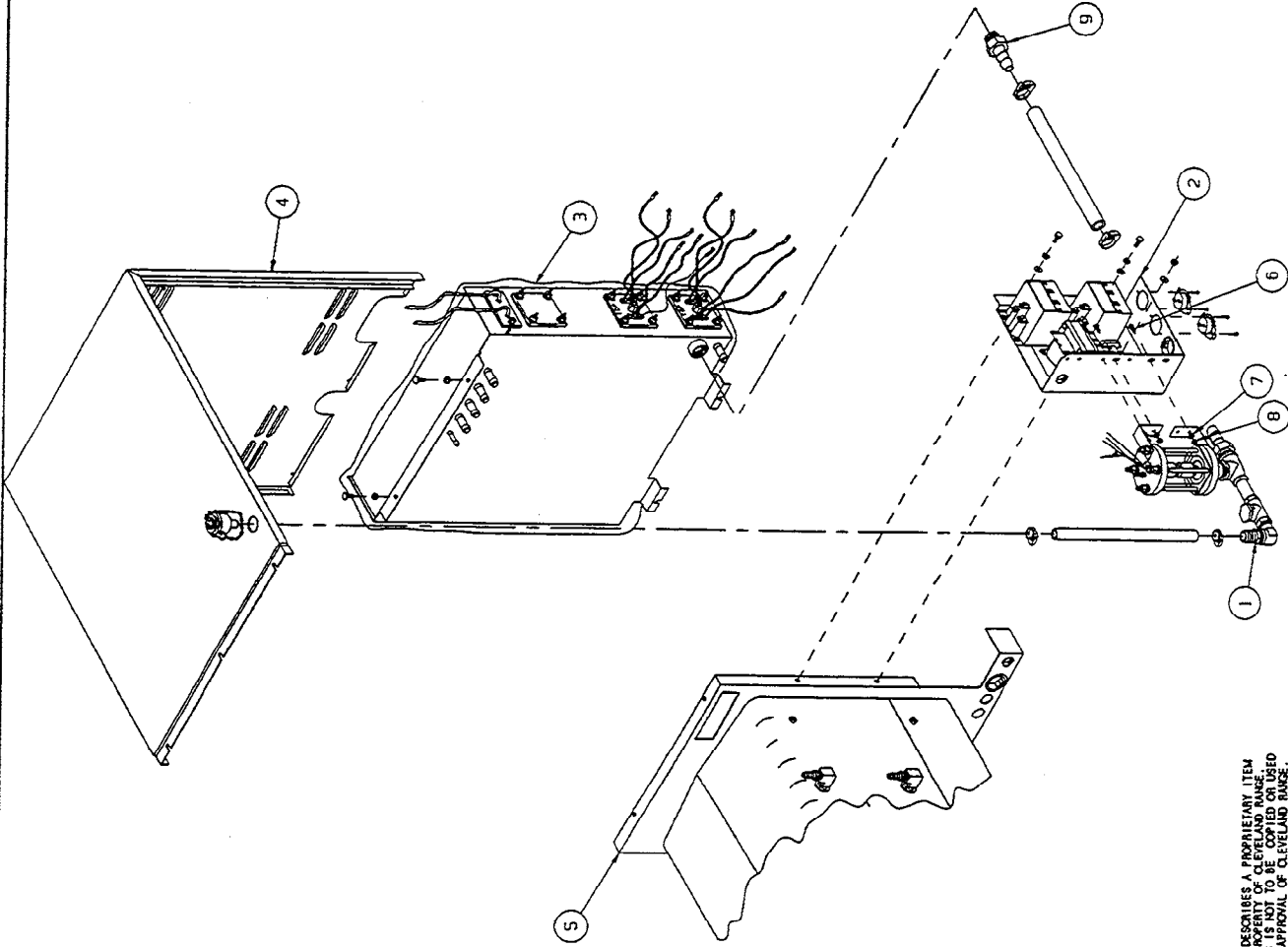
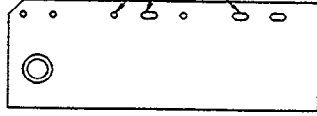
NOTE: 1. USE THREAD JOINT COMPOUND AS REQUIRED TO SEAL.



SEE NOTE 1

THIS DESIGN DESCRIBES A PROPRIETARY ITEM AND IS THE PROPERTY OF CLEVELAND RANGE. THIS DRAWING IS NOT TO BE COPIED OR USED WITHOUT THE APPROVAL OF CLEVELAND RANGE.

HOLES AND SLOTS USED ON COMPONENT BOX TO MOUNT FLOAT/DSCALER ASSY.



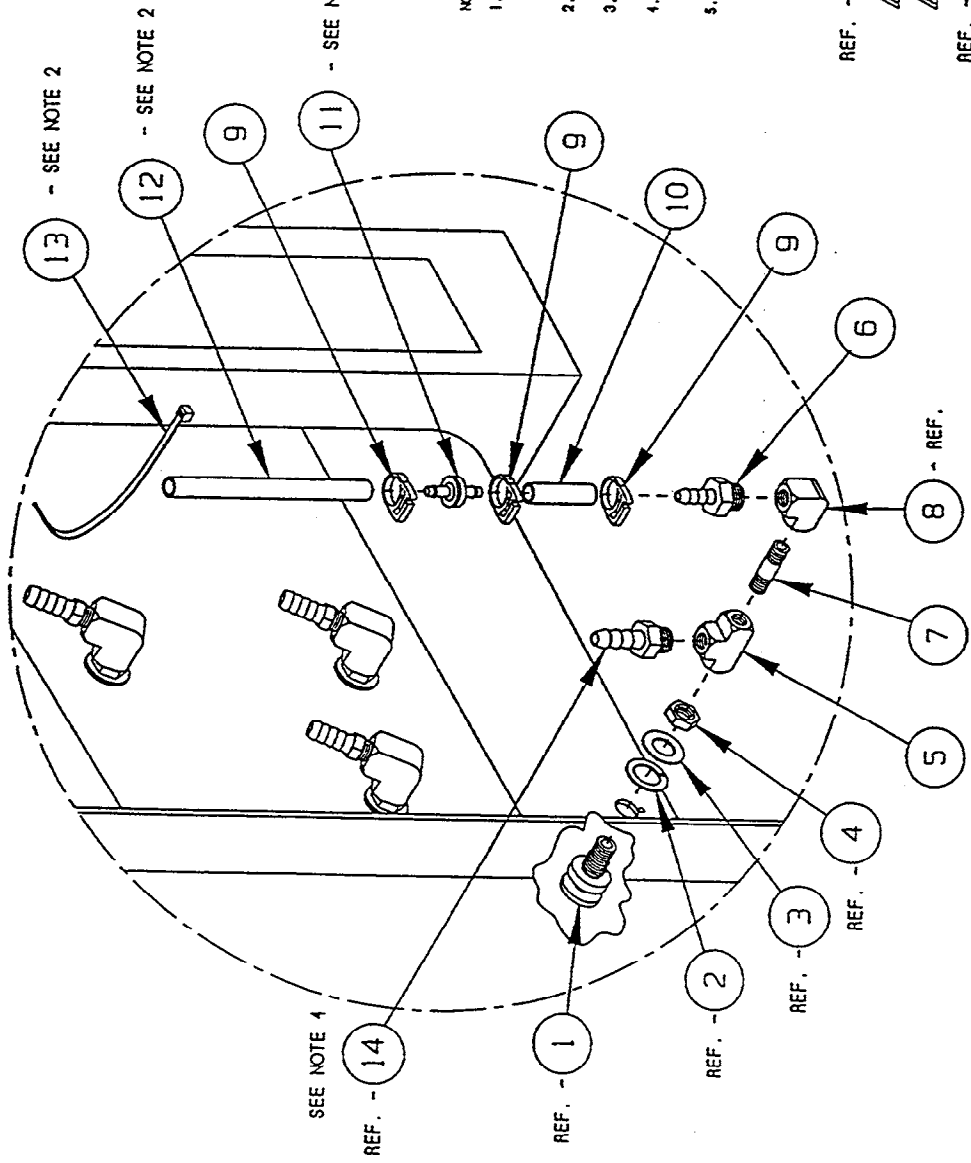
ITEM	QTY.	PART NO.	DESCRIPTION
9	1	00210	FITTING, 3/4 H X 3/4 MPT
8	3	14892	NUT, HEX LOCK ELASTIC 10-21
7	3	101655	WASHER, FLAT #10, S/S
6	3	19287	SCREW, PAN HEAD 10-21 X 1/2, S/S
5	-	1041971	CAVITY, WELD ASSY., H.L.
4	-	104037	SHEETING, TOP/BACK
3	-	104194	GENERATOR ASSY.
2	1	104200	COMPONENT PANEL ASSY.
1	1	108467	FLOAT AND DESCALER ASSY.

TOLERANCES (EXCEPT AS SHOWN)	CLEVELAND RANGE INC. 1333 East 179th St., Cleveland, Ohio 44110-2574		
DECIMAL	SCALE	DRAWN BY	APPROVED BY
± 1/4	3/16=1	DUTCHMAN	
ANGULAR	TITLE	INSTALLATION OF FLOAT/DSCALER TO COMPONENT BOX ON ULTRA 5 ELECTRIC	
CK	DATE	DRAWING NO.	REV.
	07-14-94	C - 260AKX	-

THIS DESIGN DESCRIBES A PROPRIETARY ITEM AND IS THE PROPERTY OF CLEVELAND RANGE. NO PARTS ARE TO BE COPIED OR USED WITHOUT THE APPROVAL OF CLEVELAND RANGE.

LET.	REVISIONS	DATE	BY
A	SEE E.O. 12812	12-16-91	JJD



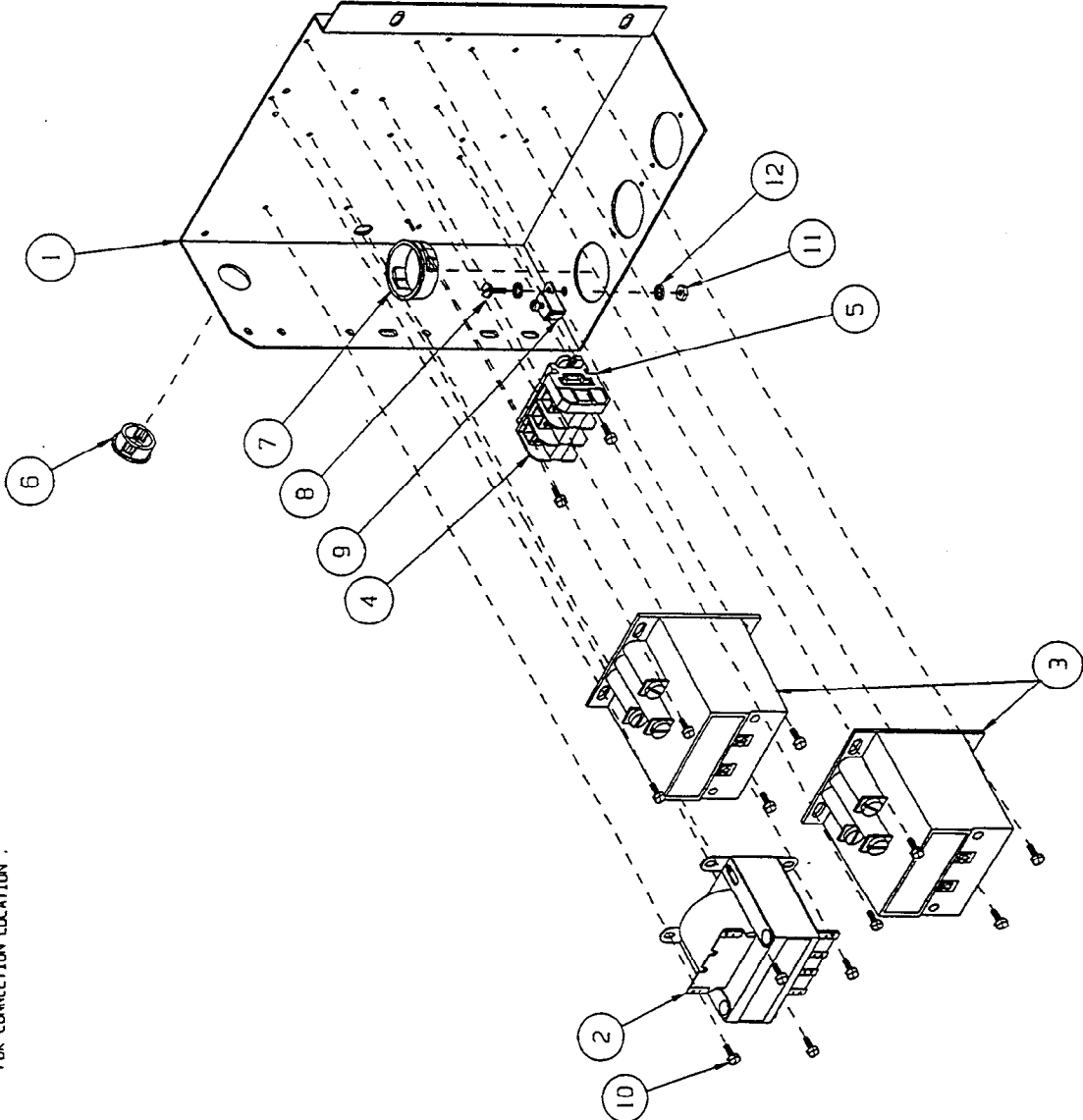
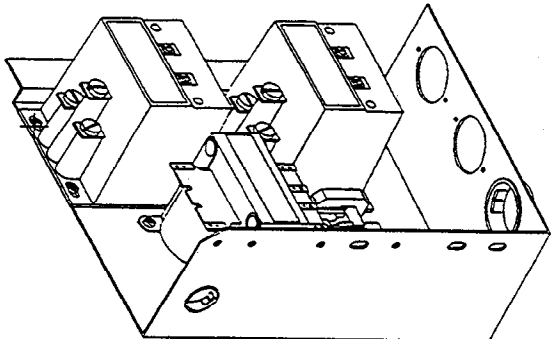
- NOTES:
- 1.) BREATHER ASSY. (1070491) TO REPLACE ONE SPRAY NOZZLE ASSY. (1002301) ONE PLACE PER CAVITY ON ALL STEAMCRAFT ULTRA UNITS.  
 A) ONE COMPARTMENT UNITS = ONE BREATHER ASSY.  
 B) TWO COMPARTMENT UNITS = TWO BREATHER ASSY.
  - 2.) 8" HOSE IS TO BE SECURED WITH NYLON CABLE TO THE HOSE OF THE SPRAY NOZZLE ASSY. DIRECTLY ABOVE THE NEW ASSY.
  - 3.) CHECK VALVE - SIDE WHICH READS "VAC" MUST FACE DOWN TOWARD HOSE BAR.
  - 4.) ITEM 5 (P/N 20199) AND ITEM 6 (P/N 1010481) TO BE ROTATED TO AN ANGLE THAT WILL MATCH THE OTHER SPRAY NOZZLES OR MEET A MATING HOSE FITTING.
  - 5.) SEE INSTRUCTIONAL DRAWINGS 280481-280482 FOR INSTALLATION OF THIS ASSEMBLY INTO THE STEAMCRAFT ULTRA UNITS.

REF.	ITEM	DESCRIPTION
14	1040418	FITTING, 1/2 HOSE X 1/4 IPT
13	20451	TIE, NYLON CABLE
12	1043790500	HOSE, SILICONE 1/4 ID X 1/2 OD X 5'
11	107032	CHECK VALVE - PLASTIC DIAPHRAGM
10	1043790300	HOSE, SILICONE 1/4 ID X 1/2 OD X 3'
9	104383	CLAMP, HOSE, NYLON
8	05298	ELBOW, 1/4 X 90°, BRASS
7	14411	NIPPLE, 1/4 X 1.5", BRASS
6	10438	FITTING, 1/4 HOSE X 1/4 IPT
5	20199	TEE, 1/4 BRASS
4	104081	NUT, HEX JAW 5/8-18 BRASS
3	104232	WASHER, FLAT S/S
2	104082	GASKET, STEAM INJECTOR
1	104009	FITTING ASSY., STEAM SUPPLY
		DESCRIPTION

TOLERANCES	CLEVELAND RANGE, INC.	
(UNLESS OTHERWISE SPECIFIED)	1300 East 179th St., Cleveland, Ohio 44116-2371	
DECIMAL	SCALE	APPROVED BY
± N/A	3/16"±1	DUTCHMAN
ANGULAR	TITLE	
± N/A	BREATHER/SPRAY NOZZLE ASSY. 1 1/2" HOSE 1 STEAMCRAFT ULTRA 3, 5	
CK	DATE	REV.
	09-15-91	A
	DRAWING NO.	
	C - 1070001	

THIS DESIGN DESCRIBES A PROPRIETARY ITEM AND IS THE PROPERTY OF CLEVELAND RANGE. IT IS NOT TO BE COPIED OR USED WITHOUT THE APPROVAL OF CLEVELAND RANGE.

LET.	REVISIONS	DATE	BY
A	101541 WAS DTY. OF 101540 WAS DTY. OF 3. 104223 WAS DTY. OF 14. ADDED 104225 & 1042251 PER E.O. # C-1876 R2	03-28-91	J.A.
B	OMITTED 104223 & 101336. ADDED 105127, 15010, AND 10358. 103936 WAS 104092 PER E.O. AC-2502	09-14-93	J.P.
C	P/N 105754 WAS 106127, REMOVED S/N TAG PER E.O. AC2508	01/14/93	JFA



NOTES:  
1. SEE WIRING DIAGRAM 104247 DR 104248 FOR CONNECTION LOCATION.

SEE NOTE 1

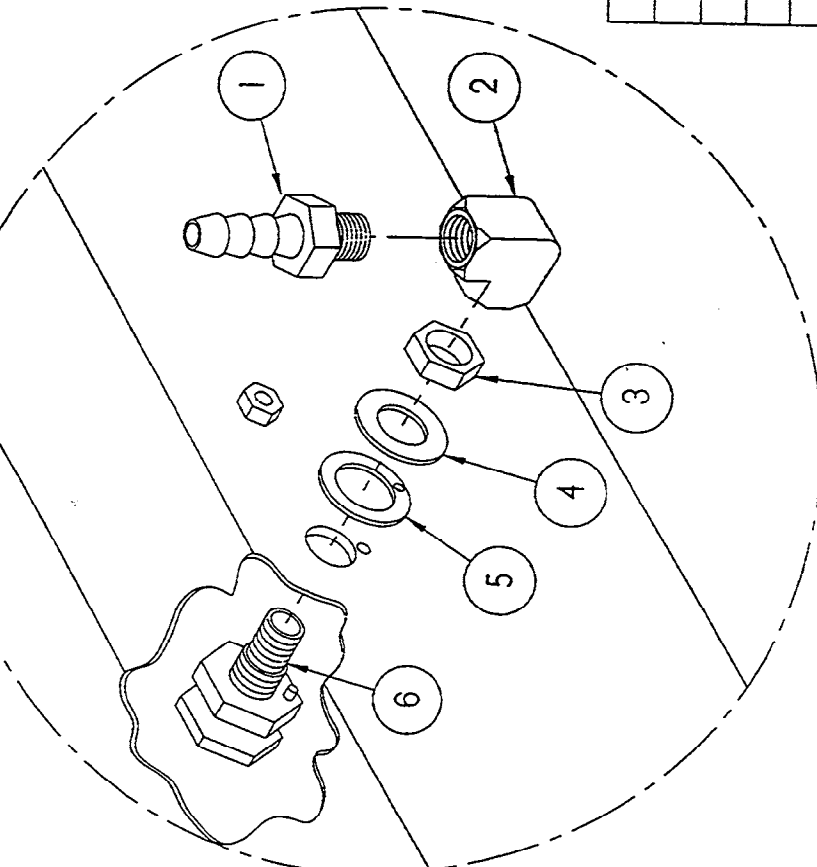
ITEM	QTY.	PART NO.	DESCRIPTION
16	2	1042251	WIRE ASSEMBLY
15	3	104225	WIRE ASSEMBLY
12	2	23114	WASHER, INTERNAL TOOTH, #10 S/S
11	1	14659	NUT, HEX 10-24, S/S
10	14	105754	SCREW, HEX W/ WASHER HEAD #6 X 3/8
9	1	20304	GROUND LUG, BURNDY #KPARC
8	1	101231	SCREW, 10-24 X 1/2 TRUSS HEAD, S/S
7	1	102581	BUSHING, HEYCO, SNAP-IN
6	1	02600	BUSHING, HEYCO SB-875-11, INSULATOR
5	1	101540	END SEGMENT, TERMINAL BLOCK, 65 AMP
4	3	101541	TERMINAL SEGMENT, CLAMP TYPE, 65 AMP
3	2	103905	CONTACTOR 30 AMP, MERCURY
2	1	20533	TRANSFORMER 75 VA, 200/480 PRIMARY, 120 SECONDARY 100'S
1	1	103936	PANEL, COMPONENT WELD ASSY.

TOLERANCES (EXCEPT AS NOTED)	SCALE	DRAWN BY	APPROVED BY
DECIMAL	1/2	R. RIOS	J.B.
ANGULAR			
± N/A			
± N/A			
TITLE	COMPONENT PANEL, H.L. STEAMCRAFT 5.1		
DATE	08-30-90	DRAWING NO.	C - 104200
CK		REV	

CLEVELAND RANGE INC  
1333 East 179th St. Cleveland, Ohio 44110-2574

THIS DESIGN DESCRIBES A PROPRIETARY ITEM AND IS THE PROPERTY OF CLEVELAND RANGE. THIS DRAWING IS NOT TO BE COPIED OR USED WITHOUT THE APPROVAL OF CLEVELAND RANGE.

LET. REVISIONS DATE BY



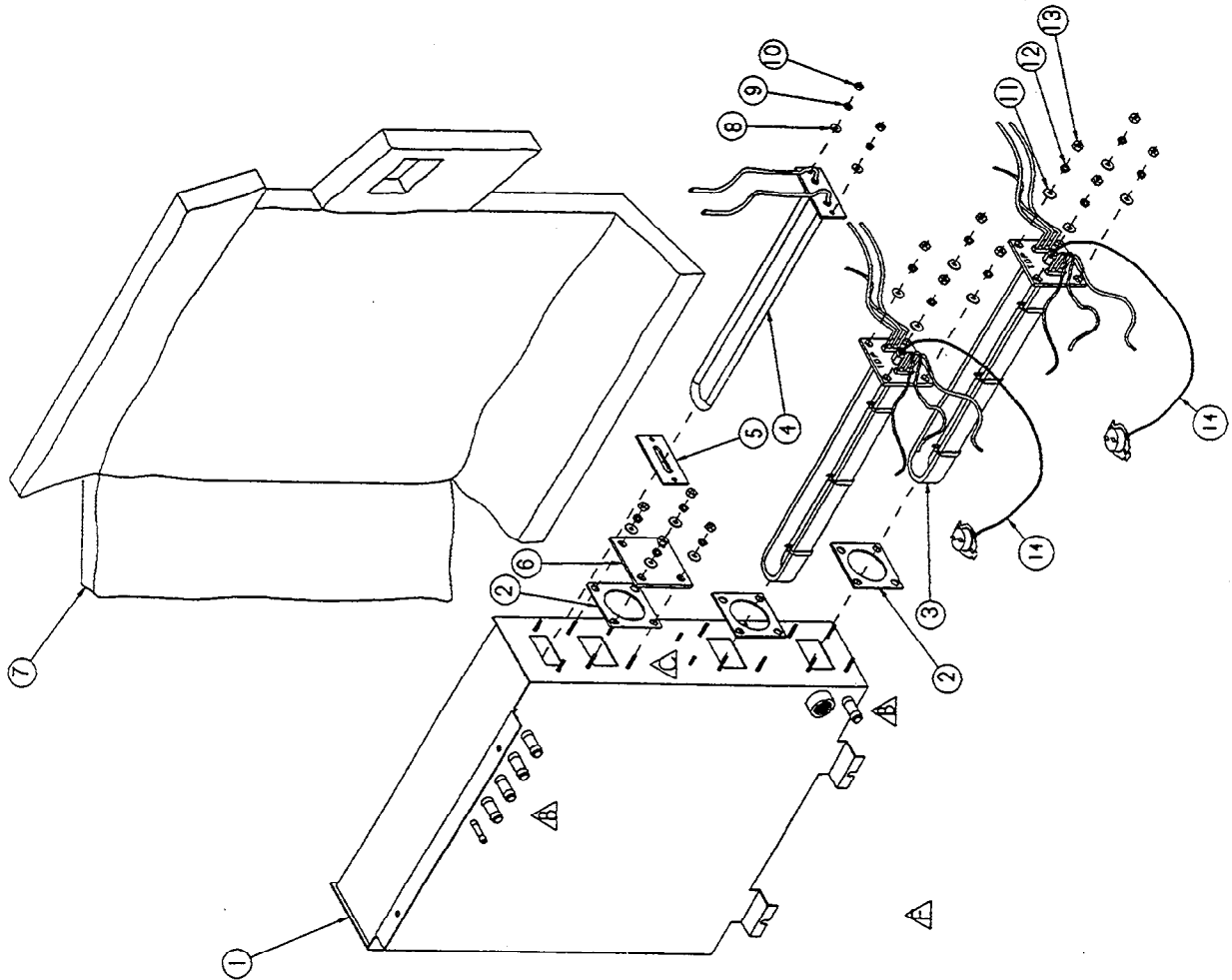
TYPICAL APPLICATION

THIS DESIGN DESCRIBES A PROPRIETARY ITEM AND IS THE PROPERTY OF CLEVELAND RANGE. THIS DRAWING IS NOT TO BE COPIED OR USED WITHOUT THE APPROVAL OF CLEVELAND RANGE.

6	1	104009	FITTING, ASSY, STEAM SUPPLY
5	1	104082	GASKET, STEAM INJECTOR
4	1	104232	WASHER, FLAT S/S
3	1	104081	NUT, JAM 5/8-18, BRASS
2	1	05236	ELBOW, 1/4" X 90°, BRASS
1	1	104048	FITTING, HOSE 1/2 H X 1/4 MPT
ITEM	QTY.	PART NO.	DESCRIPTION
TOLERANCES (EXCEPT AS NOTED)			
DECIMAL	SCALE 1/2"		
± .030	DRAWN BY DUTCHMAN		
ANGULAR	APPROVED BY THOMPSON		
± 1°	TITLE		
	SPRAY NOZZLE ASSEMBLY		
	STEAMCRAFT 3.1, 5.1 AND 10		
DATE	DRAWING NO.		REV.
02-12-93	A - 1062301		

CLEVELAND RANGE INC.  
1333 East 179th St. Cleveland, Ohio 44110-2574

LET	REVISIONS	DATE	BY
A	ITEM 412 WAS 06193, 10 WAS FROM ITEM 48, E.O. 1794	10-1-90	R.R.
B	REMOVED P/NS 03524, 03525, 104223 & 101855 - REVISED P/NS 104195 & 104091 - E.O. 1876 RI COST REDUCTION	02-12-91	P.D.
C	ADDED STUDS ON GENERATOR, PICTORIAL ADDED HEATER & ELEMENT VARIATIONS AND P/N 103731 TO PART LIST E.O. 1C-2308	10-14-92	PD
D	P/N 104091 PICTORIAL REVISED PER E.O. 1C-2277	01-12-93	PJD
E	P/N 103877 WAS 104091 PER E.O. 1C-2277 R3	02-02-93	PJD
F	REMOVED FLOAT ASSEMBLY (P/NS 103877, 14352, 05260 & 104064) PER E.O. 1C-2631	08-02-94	PJD



NO.	QTY.	PART NO.	DESCRIPTION
14	2	103731	CAPILLARY, HI LIMIT
13	12	14818	NUT, HEX, 1/4-20 S/S
12	12	23105	WASHER, LOCK, 1/4 S/S
11	12	23116	WASHER, FLAT 1/4 X 5/8
10	2	14859	NUT, HEX, 10-24 S/S
9	2	23113	WASHER, LOCK, BRIT RING, CAD PLATED, 110
8	2	101855	WASHER, FLAT, #10, S/S
7	1	104192	INSULATION, OUT, GENERATOR
6	1	104814	PLATE, GENERATOR CLEAN-OUT
5	1	104388	GASKET, DRYING ELEMENTS
4	1	1043084	ELEMENT, IMMERSION, 300W, 415 V
		1043083	ELEMENT, IMMERSION, 300W, 380 V
		1043082	ELEMENT, IMMERSION, 300W, 480 V
		1043081	ELEMENT, IMMERSION, 300W, 240 V
		104308	ELEMENT, IMMERSION, 300W, 208 V
		1038815	HEATER ASST, 8 Kw, 380 V
		1038814	HEATER ASST, 8 Kw, 480 V
		1038812	HEATER ASST, 8 Kw, 415 V
		1038811	HEATER ASST, 8 Kw, 240 V
		103881	HEATER ASST, 8 Kw, 208 V
2	3	07128	GASKET
1	1	104195	GENERATOR ASST, WELD, SC S.1

**Cleveland Range Inc.**  
1333 East 191st St., Cleveland, OH 44116-8114

SCALE: 1/16" = 1"

TITLE: GENERATOR ASSEMBLY, H.L. STEAMCRAFT ULTRA 5 & 10

DATE: 9-04-90

DRAWN BY: R. RIGGS

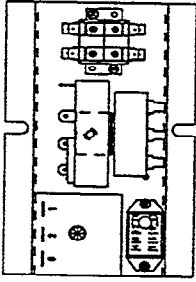
APPROVED BY: J. B.

DRIVING NO. C-104194

REV F

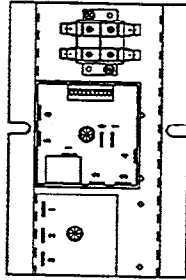
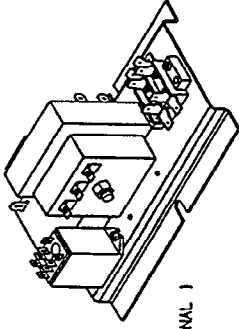
THIS DRAWING EXCEPT AS SPECIFICALLY NOTED IS THE PROPERTY OF CLEVELAND RANGE. THIS DRAWING IS NOT TO BE COPIED OR USED WITHOUT THE APPROVAL OF CLEVELAND RANGE.

LET.	REVISIONS	DATE	BY
A	REVISED NOTES PER E.O. 1C-2	01-14-93	PD
B	REDRAWN & REVISED PER EDC-2100 R1	08-17-93	PD
C	ADDED SC 5.1 GAS TIMER	08-02-93	PD
D	P/N 108541 WAS 101718	11-01-93	BA
E	ADDED CONFIGURATION FOR CLEAN LIGHT AND REMOVED SC 5.1 GAS FROM B.O.M. PER E.O. 1C-2812	09-15-91	PD
F	ROTATED TIMERS ON ASSEMBLY 108433 PER E.O. 1C-2732	11-29-91	PD



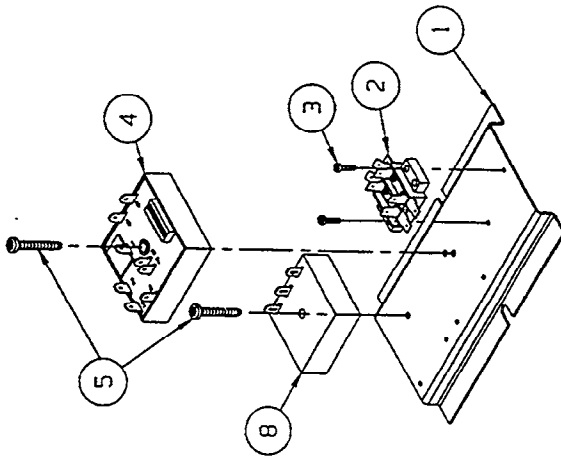
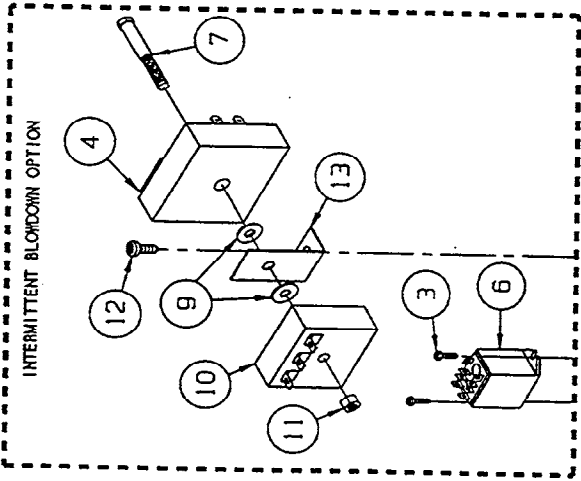
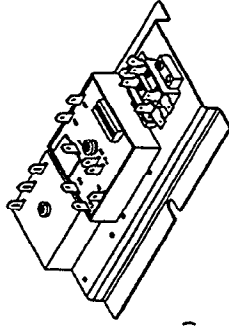
106433

INTERMITTENT BLOWDOWN ( OPTIONAL )



1064331

HEAT STANDBY ( STANDARD )



ITEM	QTY.	PART NO.	DESCRIPTION
13	1	105955	BRACKET, DUAL TIMER MOUNTING
12	1	108123	SCREW, TORX/SLOT #10-32 X .500" LG.
11	1	14818	NUT, HEX 1/4-20, FULL FINISH
10	1	108541	TIMER, 1 MIN. ON 0.8 SEC. OFF
9	2	23116	WASHER, FLAT 1/4-20 S/S
8	1	108247	INTERVAL TIMER, 2 SEC. ON, .84 SEC. OFF
7	1	108118	BOLT, 1/4-20 X 2-1/4, ZINC PLATED
6	1	105966	RELAY, 120 V. DPDT
5	2	108124	SCREW, TORX/SLOT #10-32 X 1.00" LG.
4	1	108911	TIMER, CLEAN LIGHT (DIP SWITCHES)
3	2	108127	SCREW, TORX/SLOT #8-32 X .500" LG.
2	1	44168	TERMINAL, BLOCK ASM, 2 POLE
1	1	108306	BRACKET, OPTION PLATE

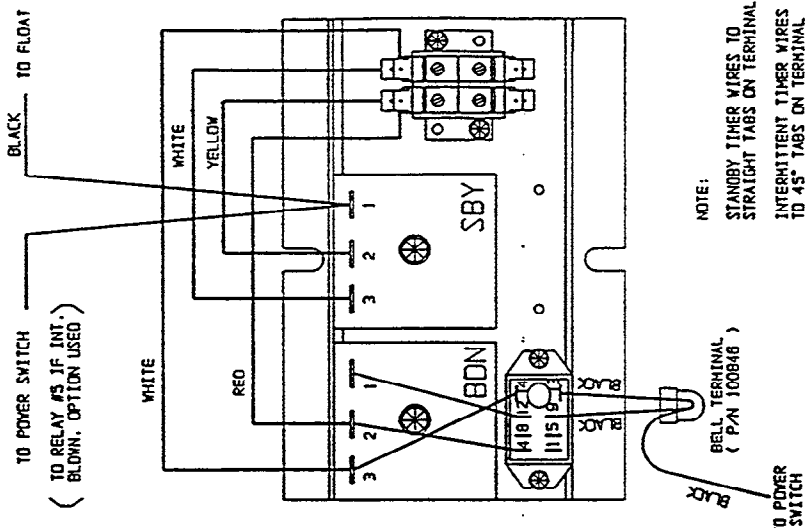
TOLEANCES (UNLESS OTHERWISE SPECIFIED)	SCALE	DRAWN BY	APPROVED BY
DIMENSIONAL ± 1/4"	1/2" = 1"	DUTCHMAN	
TOLERANCE ± 1/4"	TITLE	HEAT STANDBY PLATE WITH INTERMITTENT BLOWDOWN OPTION STEAMCRAFT ULTRA 3 & 5 ELEC.	
OK	DATE	DRAWING NO.	REV.
	03-18-93	C - 106433/10F	1 F

HEAT STANDBY 1064331	INTERMITTENT BLOWDOWN 106433	QTY.	DESCRIPTION
1	1	106433	HEAT STANDBY PLATE WITH INTERMITTENT BLOWDOWN OPTION
1	1	106433	INTERMITTENT BLOWDOWN OPTION

THIS DESIGN DESCRIBES A PROPRIETARY ITEM AND IS THE PROPERTY OF CLEVELAND RANGE. THIS DRAWING IS NOT TO BE REPRODUCED WITHOUT THE APPROVAL OF CLEVELAND RANGE.

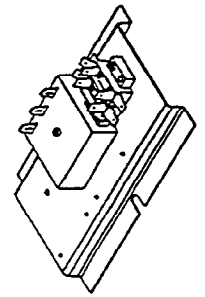
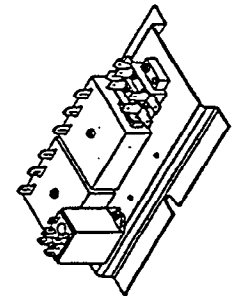
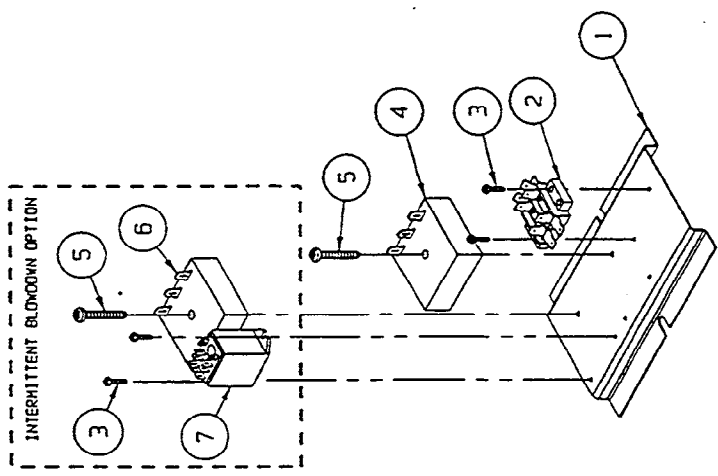
CLEVELAND RANGE / INC.  
1335 East 178th St., Cleveland, Ohio 44110-2574

LET.	REVISIONS	DATE BY
A	REVISED NOTES PER E.O. . . . J1 R2	04-14-93 P.D.
B	REDRAWN & REVISED PER EDIC-2400, R1	06-17-93 P.D.
C	ADDED SC 5.1 GAS TIMER	09-02-93 P.D.
D	P/N 106541 HAS 104716	11-04-93 (FA)



NOTE:  
STANDBY TIMER WIRES TO STRAIGHT TABS ON TERMINAL

INTERMITTENT TIMER WIRES TO 45° TABS ON TERMINAL



ITEM	QTY.	PART NO.	DESCRIPTION
7	1	105966	RELAY, 120 V, DPDT
6	1	106541	TIMER, 1 MIN ON 0.8 SEC OFF
5	2	106124	SCREW, TORX/SLOT 10-32 X 1.00"
4	1	106580	TIMER, 20 SEC ON, 6 MIN. OFF
3	4	106247	TIMER, 2 SEC ON, 64 SEC OFF
2	1	106127	SCREW, TORX/SLOT 6-32 X 1/2"
1	1	44168	TERMINAL, BLOCK ASM, 2 POLE
	1	106306	BRACKET, OPTION PLATE

TOLERANCES UNLESS OTHERWISE SPECIFIED	SCALE	DRAWN BY	APPROVED BY
DECIMAL & N/A	1/2"=1"	QUICKMAN	
ANGULAR & N/A			
TITLE			
HEAT STANDBY PLATE WITH INTERMITTENT BLOWDOWN OPTION			
STEAMCRAFT 3.1 & 5.1			
DATE	03-18-93	DRAWING NO.	C - 106433
CK			
REV.			D

STEAMCRAFT 3.1

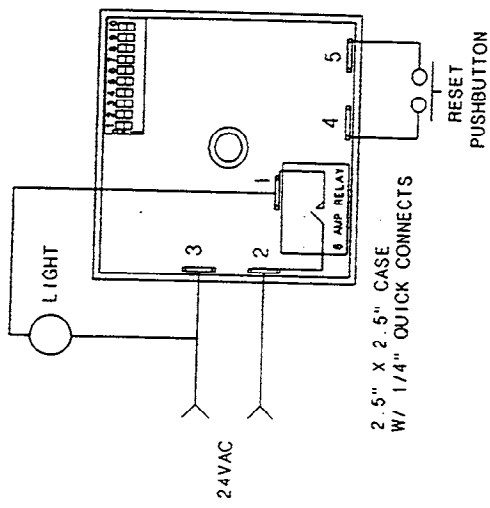
STEAMCRAFT 5.1

SC 5.1 GAS

CLEVELAND RANGE INC.  
1332 East 170th St., Cleveland, Ohio 44110-2574

THIS DESIGN DESCRIBES A PROPRIETARY ITEM  
AND IS THE PROPERTY OF CLEVELAND RANGE  
THIS DRAWING IS NOT TO BE COPIED OR USED  
WITHOUT THE APPROVAL OF CLEVELAND RANGE





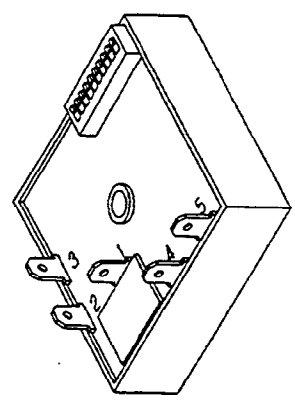
SWITCH #	TIME AMOUNT
1 *	0.5 HR
2 *	1.0 HR
3 *	2.0 HR
4 *	4.0 HR
5 *	8.0 HR
6 *	16.0 HR
7 *	32.0 HR
8 *	64.0 HR
9 *	128.0 HR
10 *	256.0 HR

COMBINE SWITCHES FOR TIME DELAY IN HOURS  
 EXAMPLES:  
 37 HRS \* SWITCH 7 \* SWITCH 4 \* SWITCH 2  
 250 HRS \* SWITCH 9 \* SWITCH 8 \* SWITCH 7  
 \* SWITCH 6 \* SWITCH 5 \* SWITCH 3

OPERATION:  
 SELECT DELAY VIA DIP SWITCH. APPLY 24VAC TO THE TIMER.  
 AS THE SUPPLY VOLTAGE IS TURNED ON AND OFF TO THE TIMER  
 THE TIMER WILL KEEP TRACK OF THE ELAPSED TIME THE  
 SUPPLY VOLTAGE IS ON. ONCE THE TIMERS SUPPLY VOLTAGE HAS  
 BEEN ON LONGER THAN THE SELECTED DELAY THE RELAY WILL  
 TRANSFER. THIS IN TURN WILL TURN ON THE INDICATOR LIGHT.  
 ONCE THIS HAS HAPPENED THE RESET BUTTON WILL BECOME  
 ACTIVE AND ALLOW THE TIMER TO BE RESET.

SOURCE:  
 AITROTRONICS  
 2747 RT. 20 E. BOX 326  
 CAZENOVIA, N.Y. 13035

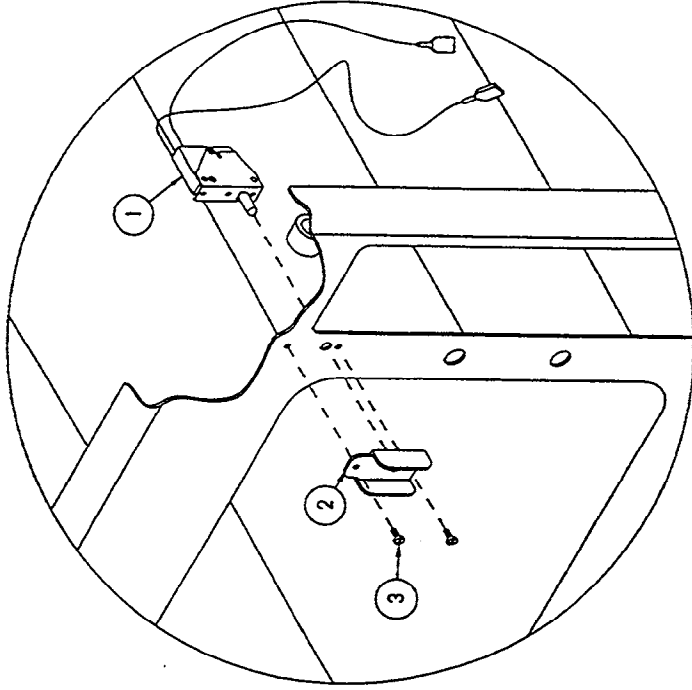
TYPE: CR-2 TGCKB351H6E2  
 INPUT: 24 VAC, 6 AMP  
 DELAY: 5-511, 5 HR. ON-DLY



ITEM	QTY.	PART NO.	DESCRIPTION
TOLERANCES (EXCEPT AS NOTED)			CLEVELAND RANGE INC. 1333 East 179th St. Cleveland, Ohio 44110-2574
DECIMAL		SCALE 1=1	DRAWN BY DUTCHMAN
ANGULAR			APPROVED BY
CK			TITLE TIMER, CLEAN LIGHT (DIP SWITCHES)
		DATE 05-23-94	DRAWING NO. B - 106911
			REV. -

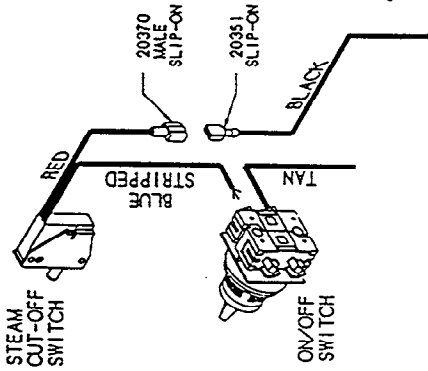
THIS DESIGN DESCRIBES A PROPRIETARY ITEM  
 AND IS THE PROPERTY OF CLEVELAND RANGE.  
 THIS DRAWING IS NOT TO BE COPIED OR USED  
 WITHOUT THE APPROVAL OF CLEVELAND RANGE.

LET.	REVISIONS	DATE	BY
A	WAS: HIGH LIMIT NOW: FLOAT PER E.O. IC-2381 R1	03-01-93	PJD
B	20351 BLACK WAS FROM FLOAT ONLY PER EO IC-2381 R2	01-11-93	PJD



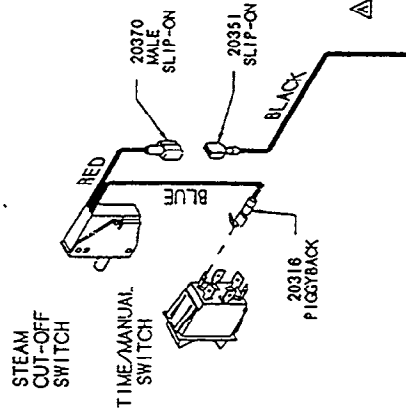
3	2	105449	SCREW, TRUSS HD. 6-32 X .312, S/S
2	1	105442	GUARD, SWITCH PROTECTION
1	1	104702	SWITCH, CMT. STEAM SHUT-OFF
ITEM		QTY.	PART NO.
TOLERANCES (UNLESS OTHERWISE SPECIFIED)			
DECIMAL	SCALE	DRAWN BY	
±.030	FITS	DUTCHMAN	
ANGULAR	TITLE	APPROVED BY	
±1°		CLEVELAND RANGE, INC.	
DATE	DATE	1933 E. 117th St., Cleveland, Ohio 44110-2374	
02-03-93	02-03-93	DRAWING NO. C - 106355	
CK		REV. B	

### FOR ON/OFF SWITCH TIMER



FROM: FLOAT (STANDARD)  
GEN. STAND-BY TIMER (SBY OPTION)  
BELL TERMINAL (TDS AND SBY OPTIONS TOGETHER)

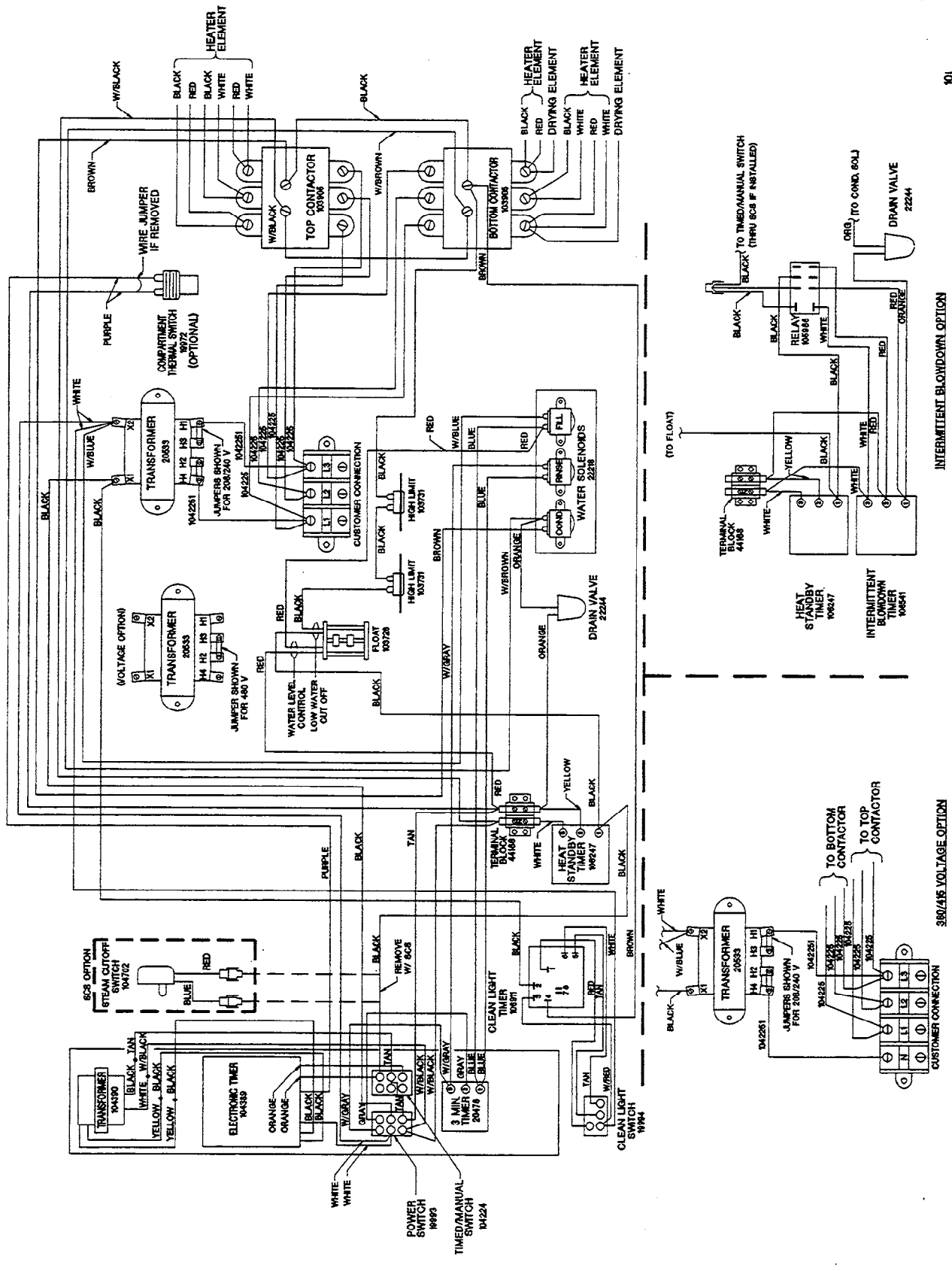
### FOR ELECTRICAL & 60 MINUTE MECHANICAL TIMERS



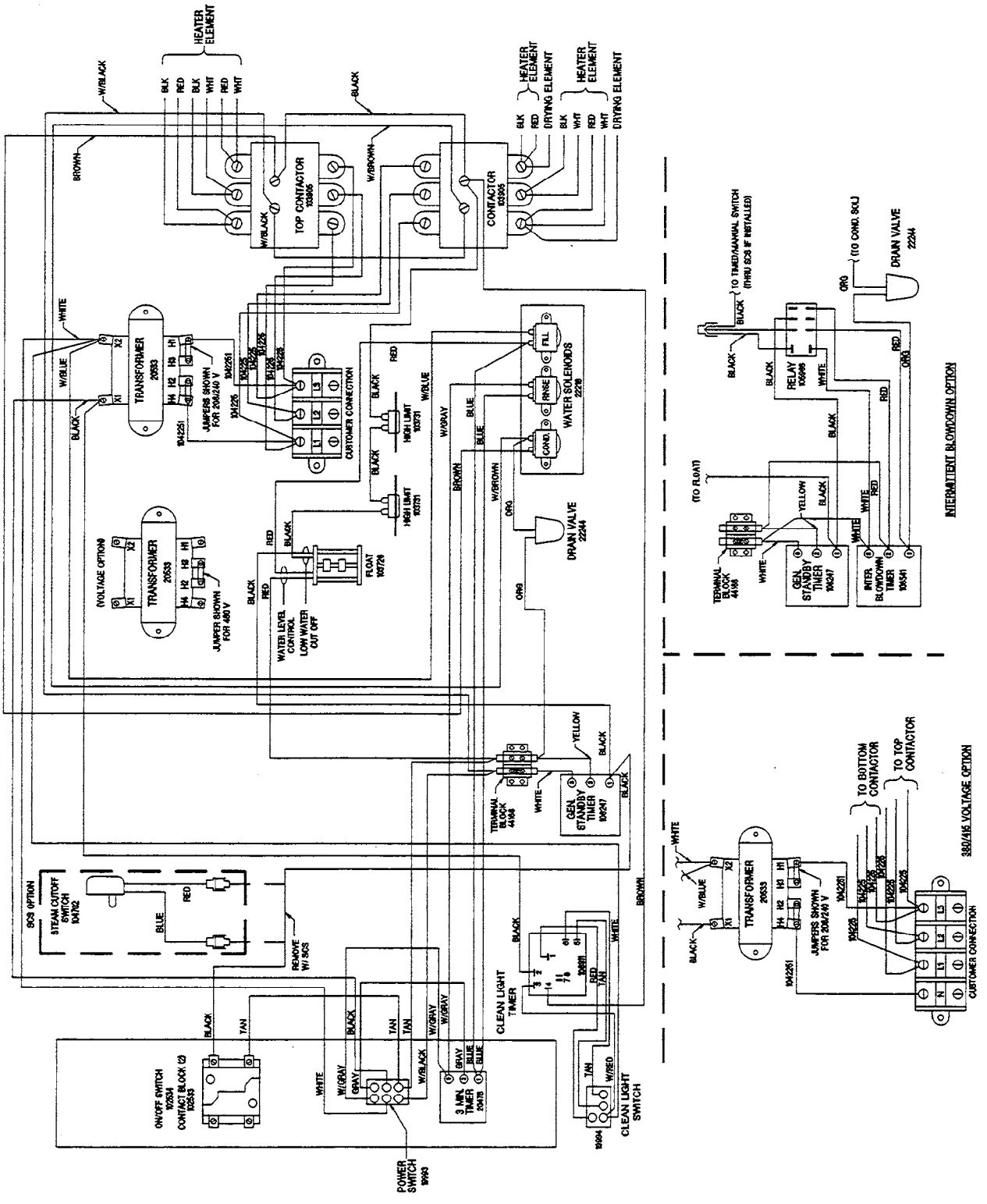
FROM: FLOAT (STANDARD)  
GEN. STAND-BY TIMER (SBY OPTION)  
BELL TERMINAL (TDS AND SBY OPTIONS TOGETHER)

THIS DESIGN DESCRIBES A PROPRIETARY ITEM  
AND IS THE PROPERTY OF CLEVELAND RANGE.  
THIS DRAWING IS NOT TO BE COPIED OR USED  
WITHOUT THE APPROVAL OF CLEVELAND RANGE.

# STEAMCRAFT 51 ELECTRONIC TIMER



# STEAMCRAFT 5.1 ON/OFF SWITCH



# STEAMCRAFT 51 MECHANICAL TIMER

